

Revisions:

Date:	Description:

Landscape Documents

Downtown
Lee's Summit

A Residential Development by

Cityscape
Residential

This drawing as an instrument of
services, is and shall remain the
property of SGN+A and shall not
be reproduced, published or used
in any way without permission of
SGN+A, Inc.

Sheet Title:

Code Compliance
Landscape Plan

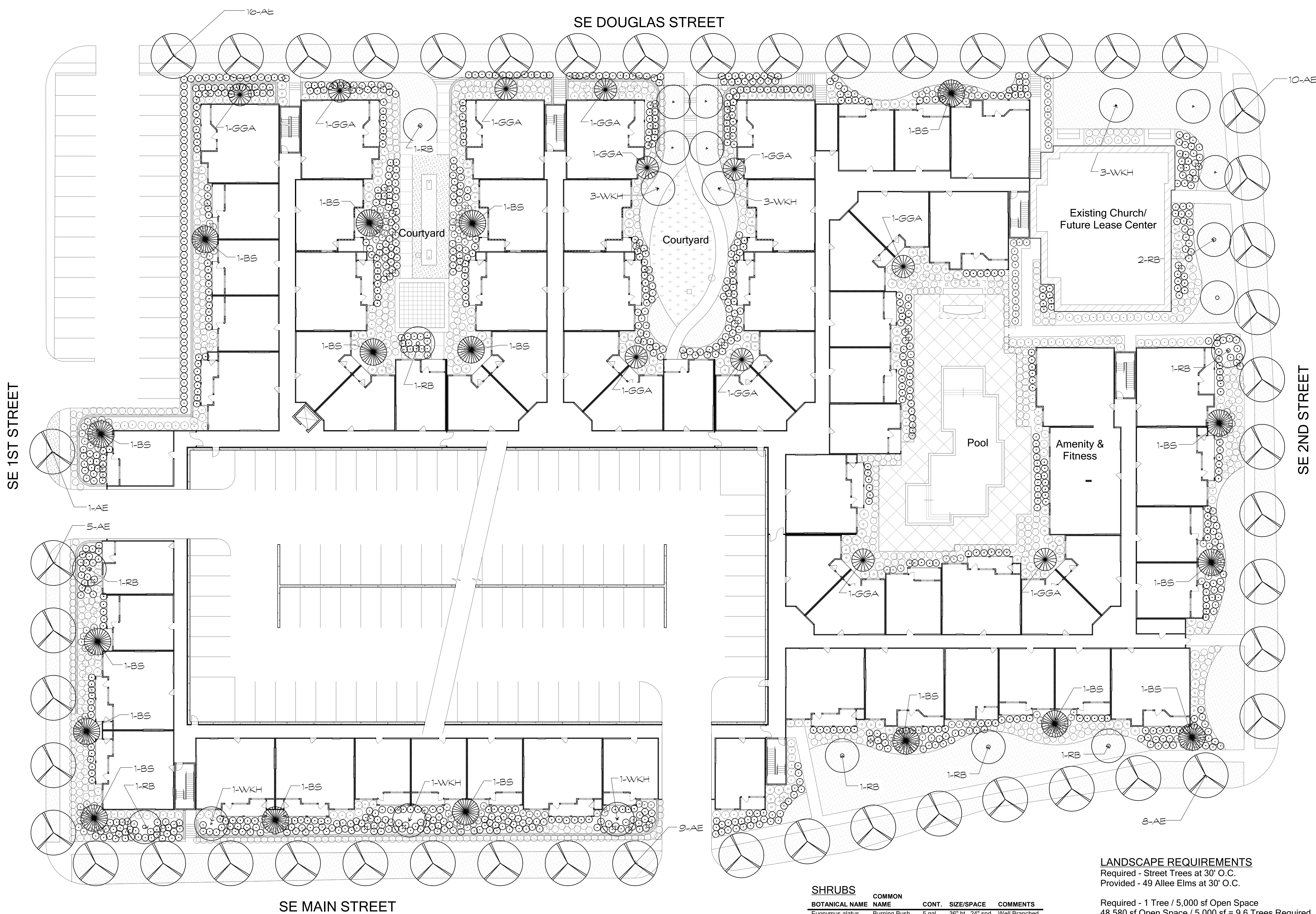
Date:

January 22, 2019

Sheet Number:

L1

Not Released for Construction



TREES

QNTY	PLAN NAME	BOTANICAL NAME	COMMON NAME	CONT.	SIZE	COMMENTS
17	BS	Picea pungens 'Bakeri'	Blue Spruce	B & B	8' ht., 4' spd., 2" cal.	Well Branched
12	WKH	Crataegus viridis 'Winter King'	Winter King Hawthorn	B & B	10' ht., 6' spd., 2" cal.	Full, well branched
11	TM	Thuja x plicata 'Green Giant'	Green Giant Arborvitae	B&B	8' ht., 4' spd., 2" cal.	Multi-Stem
10	RB	Cercis canadensis 'Rising Sun'	Redbud	B & B	10' ht., 6' spd., 2" cal.	Multi-Stem
49	AE	Ulmus parvifolia 'Emer II'	Allee Elm	B & B	14' ht., 6' spd., 3" cal.	Full, well branched

Note: All trees in lawn areas to receive a 3' dia circle of shredded cedar mulch to a depth of 3"

SHRUBS

BOTANICAL NAME	COMMON NAME	CONT.	SIZE/SPACE	COMMENTS
Euonymus alatus 'Fireball'	Burning Bush	5 gal.	36" ht., 24" spd.	Well Branched
Ilex vomitoria 'Nana'	Dwarf Yaupon Holly	3 gal.	24" ht., 24" spd.	Well Branched
Buxus microphylla 'Wintergreen'	Wintergreen Boxwood	5 gal.	36" ht., 24" spd.	Full
Miscanthus sinensis 'Zebra'	Zebra Grass	5 gal.	30" ht., 24" spd.	Full
Pennisetum alopecuroides 'Hamel'	Dwarf Fountain Grass	1 gal.	12" ht., 8" spd.	Full pot
Yucca filamentosa 'Bright Edge'	Variegated Yucca	1 gal.	12" ht., 12" spd.	Full pot
Miscanthus sinensis 'Zebra'	Zebra Grass	5 gal.	30" ht., 24" spd.	Full pot
Seasonal Color	Seasonal Color	4" pot	varies	LA to approve
Cynodon dactylon	Bermuda Grass			weed free

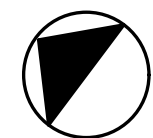
LANDSCAPE REQUIREMENTS

Required - Street Trees at 30' O.C.
Provided - 49 Allee Elms at 30' O.C.

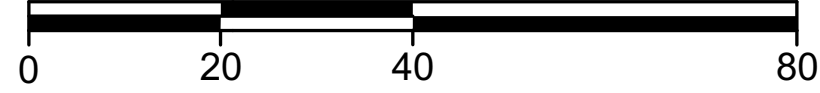
Required - 1 Tree / 5,000 sf Open Space
48,580 sf Open Space / 5,000 sf = 9.6 Trees Required
50 Trees Provided

Required - 2 Shrubs / 5,000 sf Open Space
48,580 sf Open Space / 5,000 sf = 19.2 Shrubs Required
2,187 Shrubs Provided*

*Shrubs to be selected from list



NORTH



Scale: 1"= 20'