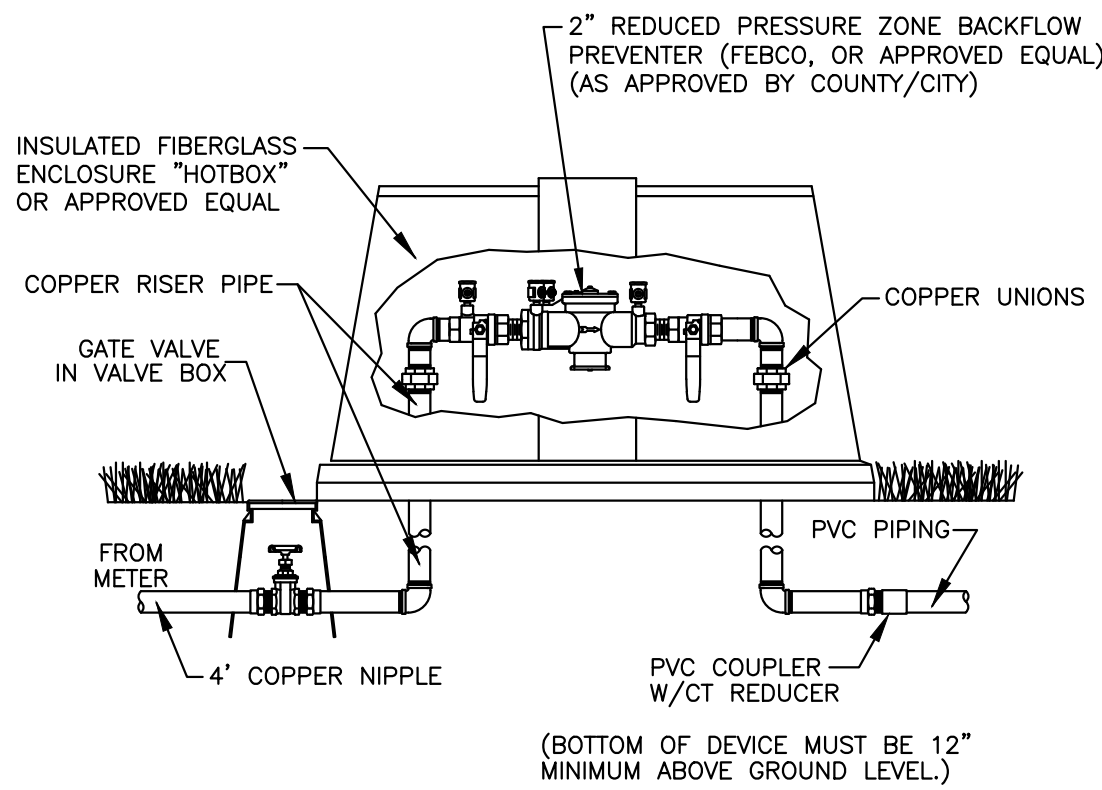
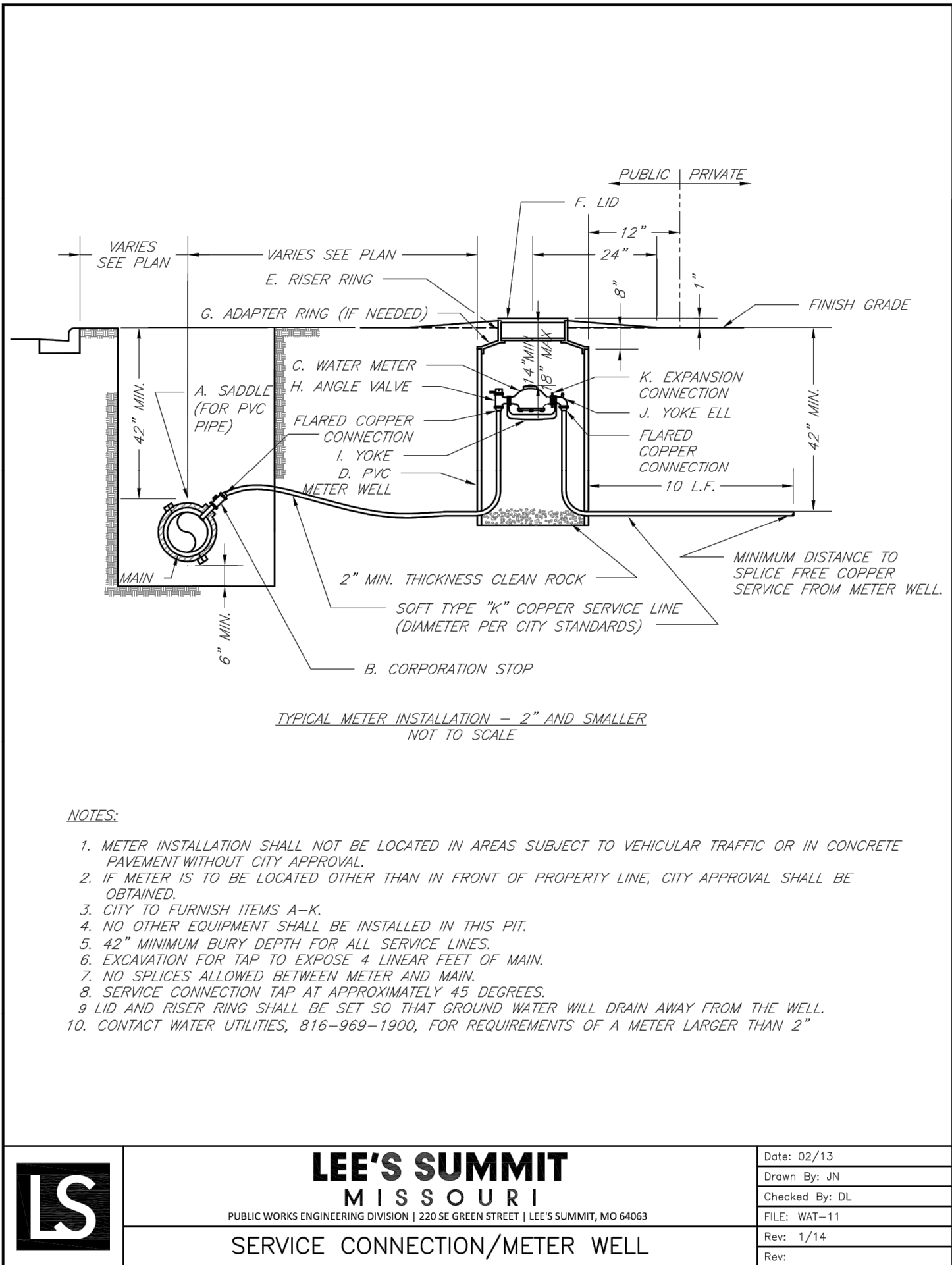
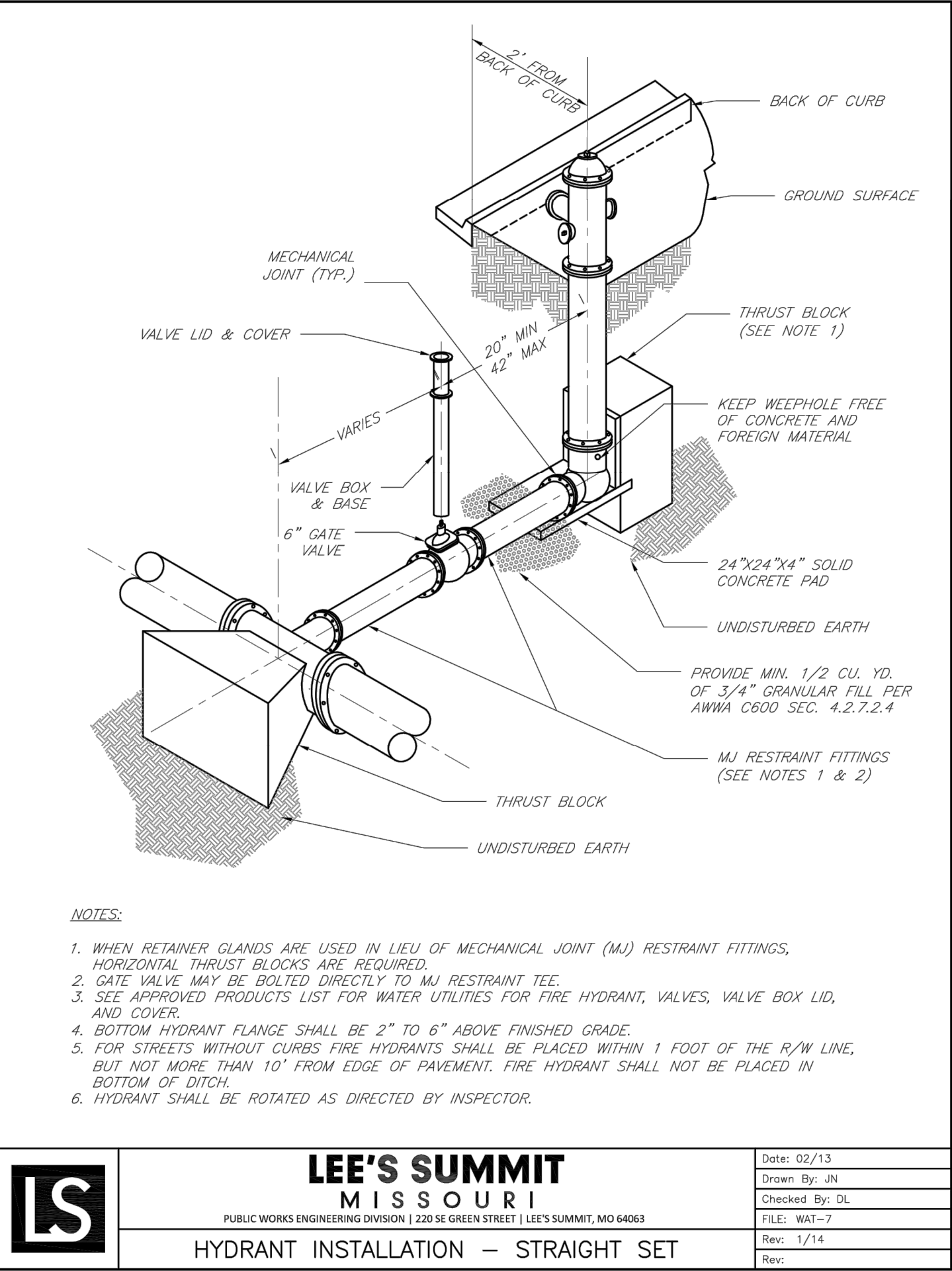
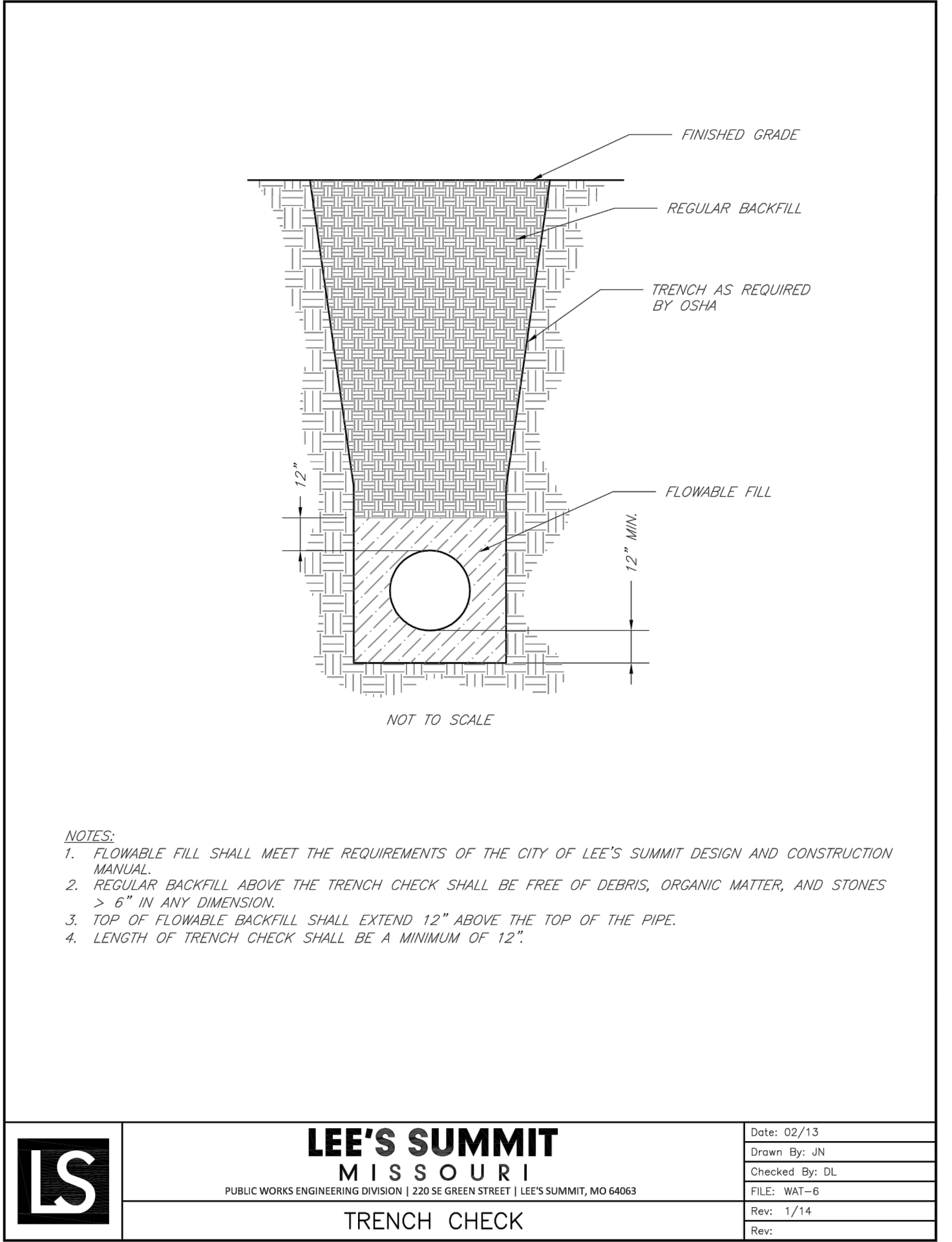
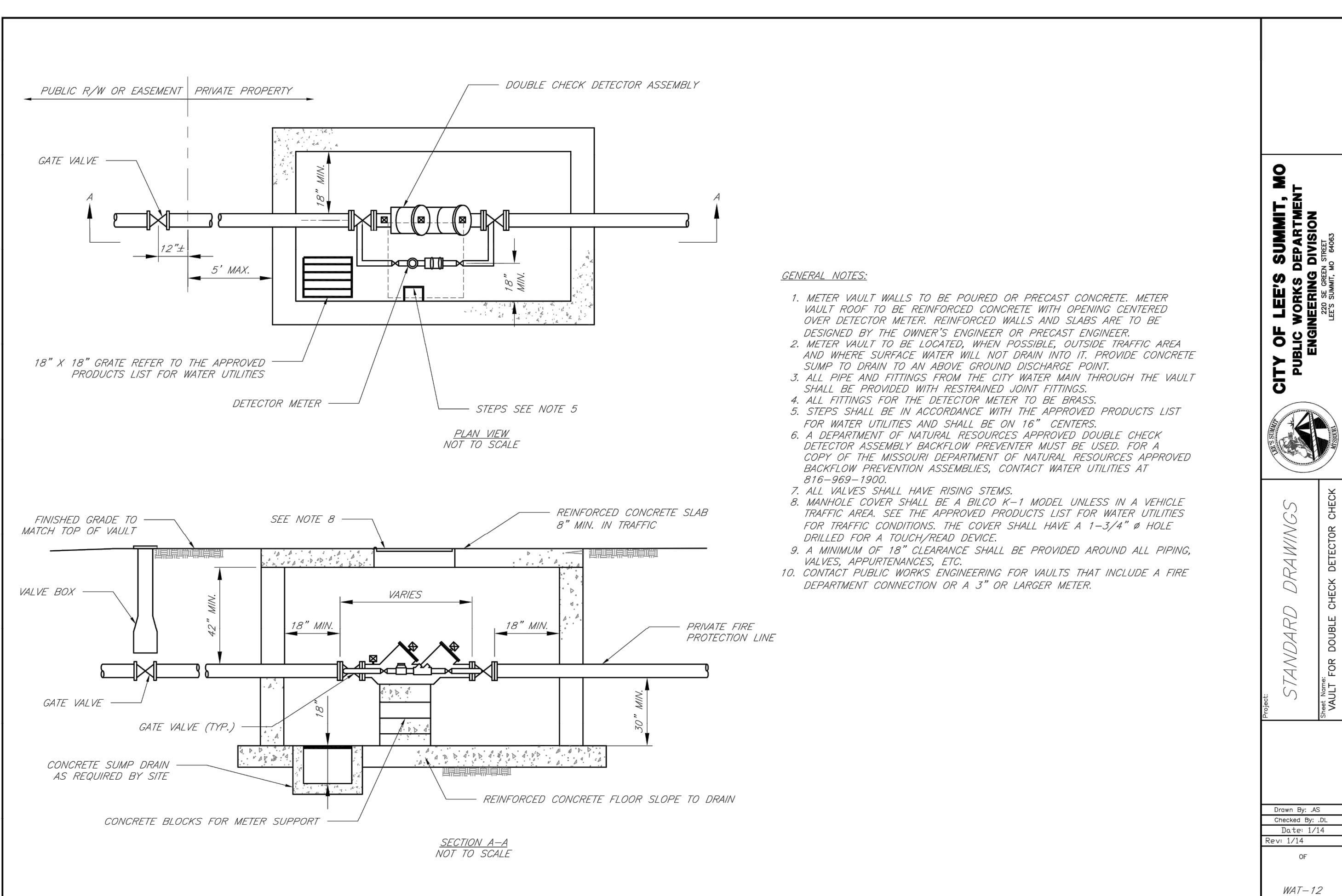
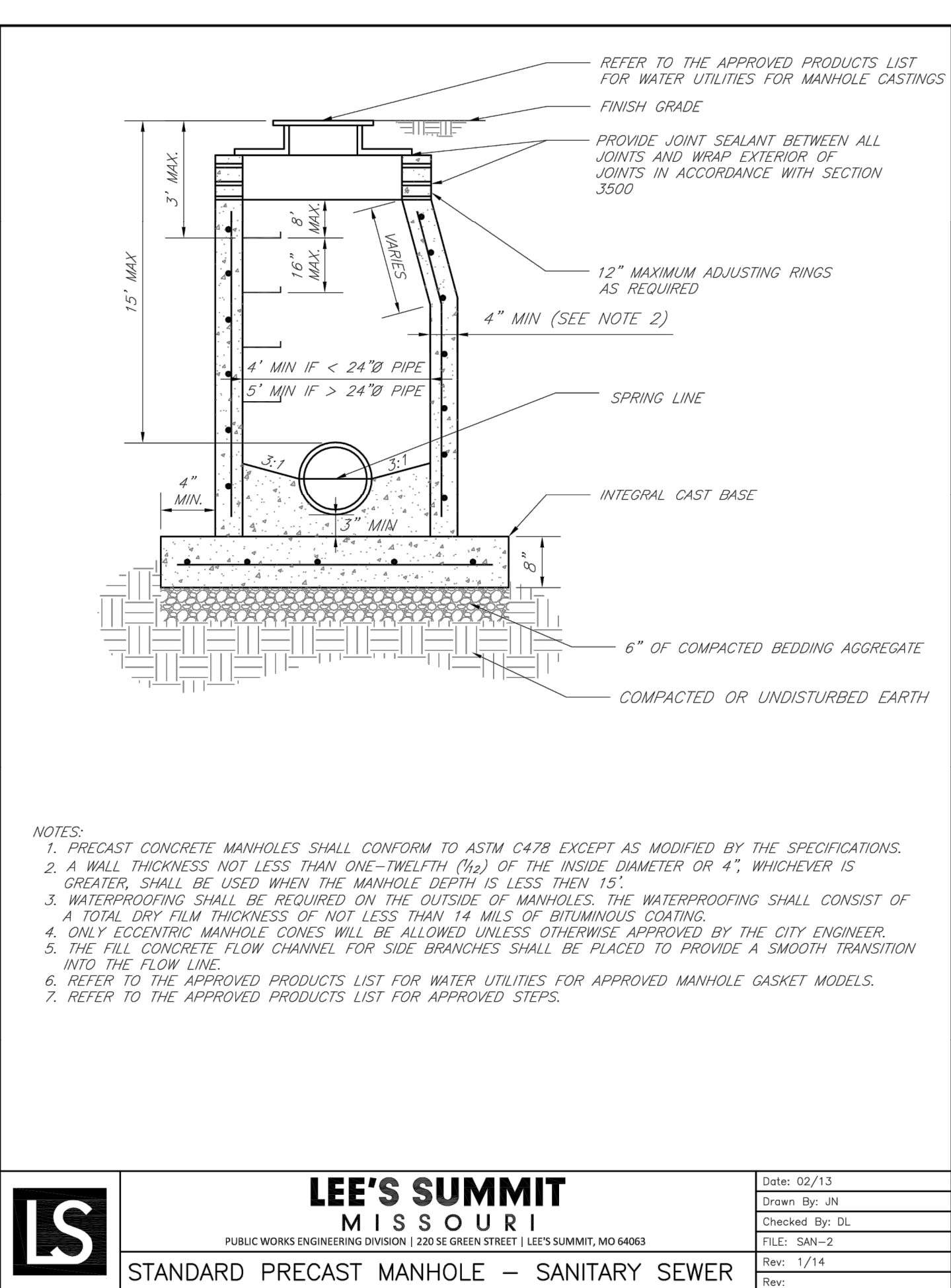
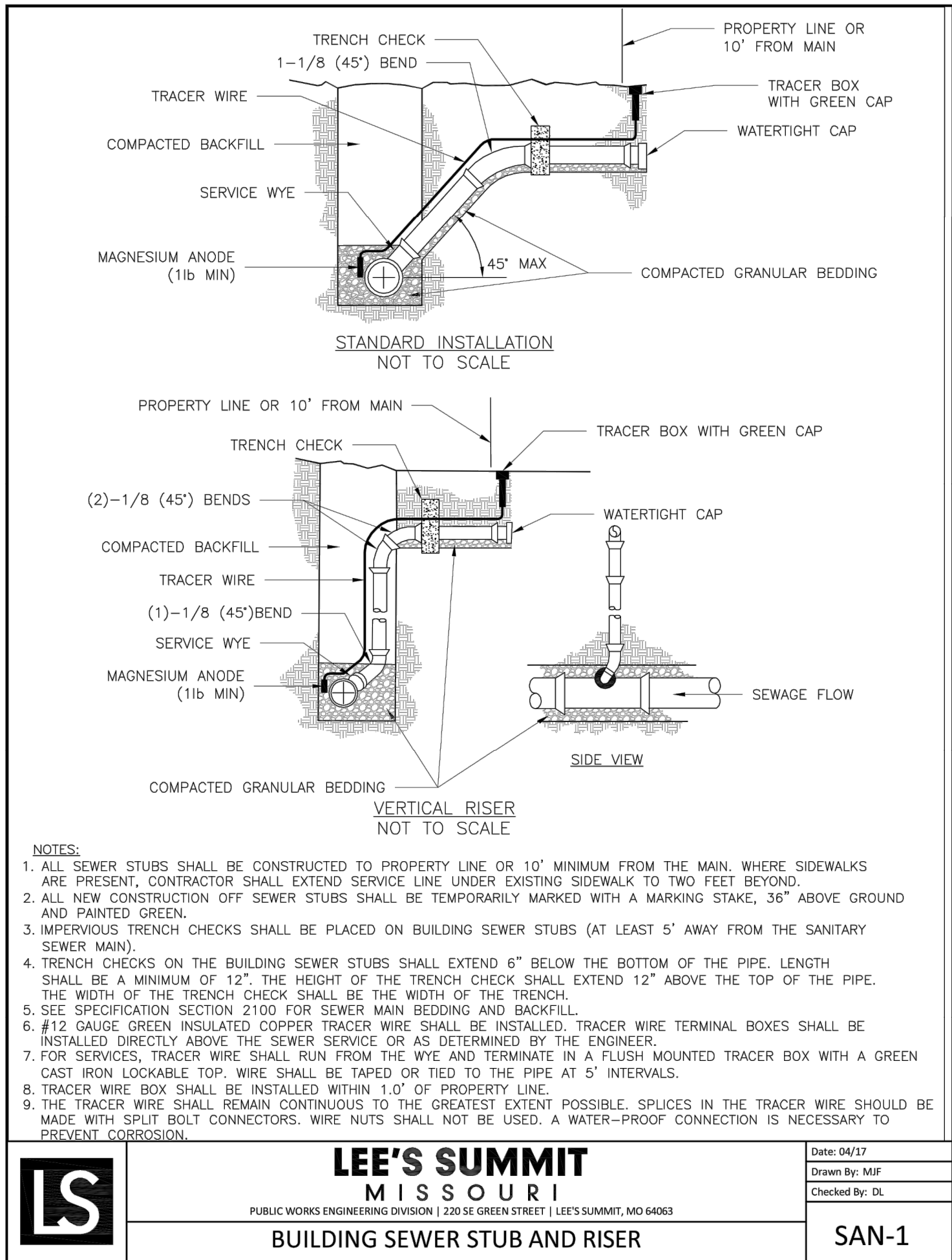


\\PHILIPS-SERVER\Projects\171125\Eng\Permit Plans\DETAILS - PRIVATE.dwg Layout:SWK-WTR 1 Jan 27, 2020 - 2:53pm Kyle Deters



IRRIGATION BACKFLOW PREVENTOR  
N.T.S.



STATE OF MISSOURI

BOARDS

ENGINEERS

NUMBER

PE-2011010998

01/27/2020

PROFESSIONAL ENGINEER

PHILIPS ENGINEERING, INC.

1270 N. Winchester

Olathe, Kansas 66061

(913) 393-1155

Fax (913) 393-1165

www.philipsengineering.com

PLANNING

ENGINEERING

IMPLEMENTATION

SANITARY & WATER DETAILS

DOWNTOWN LEE'S SUMMIT APARTMENTS

114 S.E. DOUGLAS STREET

LEE'S SUMMIT, JACKSON COUNTY, MISSOURI

PROJECT NO.	171125	DATE	01-28-20	DRAWN	SNH	CHECKED	DAF	APPROVED	DECL
CERTIFICATE OF AUTHORIZATION									
LAND SURVEYING - LS-82									
ENGINEERING - E-361									
CERTIFICATE OF AUTHORIZATION									
LAND SURVEYING-20070128									
ENGINEERING-20060309									

Drawn By: AS

Checked By: DL

Rev: 1/14

or

PROJECT NO. 171125

DATE: 01-28-20

DRAWN: SNH

CHECKED: DAF

APPROVED: DECL

CERTIFICATE OF AUTHORIZATION

LAND SURVEYING - LS-82

ENGINEERING - E-361

CERTIFICATE OF AUTHORIZATION

LAND SURVEYING-20070128

ENGINEERING-20060309

SHEET

C17