

PLAN FOR  
PRIVATE SANITARY AND STORM SEWER IMPROVEMENTS  
& PUBLIC WATER MAIN IMPROVEMENTS  
SAINT LUKE'S EAST - FLEX FACILITY EXPANSION

CITY OF LEE'S SUMMIT, MISSOURI

INDEX OF SHEETS

SHEET NO.	C300	COVER SHEET
SHEET NO.	C301	SANITARY SEWER PLAN AND PROFILE
SHEET NO.	C302-C303	STORM SEWER PLAN AND PROFILES
SHEET NO.	C304	STANDARD SANITARY SEWER DETAILS
SHEET NO.	C305	STANDARD STORM SEWER DETAILS
SHEET NO.	C401	WATER LINE PLAN AND PROFILE
SHEET NO.	C402	STANDARD WATER LINE DETAILS

GENERAL NOTES

- ALL WORKMANSHIP AND MATERIALS SHALL BE SUBJECT TO THE INSPECTION AND APPROVAL OF CITY OF LEE'S SUMMIT, MISSOURI.
- LINEAL FOOT MEASUREMENTS SHOWN ON THE PLANS ARE HORIZONTAL MEASUREMENTS, NOT SLOPE MEASUREMENTS. ALL PAYMENTS SHALL BE MADE ON HORIZONTAL MEASUREMENTS.
- THE UTILITY LOCATIONS SHOWN ON THESE PLANS ARE TAKEN FROM UTILITY COMPANY RECORDS AND ARE APPROXIMATE ONLY. THEY DO NOT CONSTITUTE ACTUAL FIELD LOCATIONS. THE CONTRACTOR SHALL VERIFY THE LOCATION AND DEPTH OF ALL UTILITIES PRIOR TO CONSTRUCTION.
- THE CONTRACTOR SHALL ADHERE TO THE PROVISIONS OF THE SENATE BILL NUMBER 583, 78TH GENERAL ASSEMBLY OF THE STATE OF MISSOURI. THE BILL REQUIRES THAT ANY PERSON OR FIRM DOING EXCAVATION ON PUBLIC RIGHT-OF-WAY DO SO ONLY AFTER GIVING NOTICE TO, AND OBTAINING INFORMATION FROM, UTILITY COMPANIES. STATE LAW REQUIRES 48 HOURS ADVANCE NOTICE. THE NAMES AND TELEPHONE NUMBERS OF UTILITY COMPANIES, EVEN IF ONLY REMOTELY INVOLVED WITH THIS PROJECT ARE AS FOLLOWS:

ELECTRIC	KANSAS CITY POWER & LIGHT CO.	888-474-5275
GAS	MISSOURI GAS ENERGY	816-756-5252
WATER	CITY OF LEE'S SUMMIT	816-969-1940
TELEPHONE AT&T		800-464-7928
SEWER	CITY OF LEE'S SUMMIT	816-969-1940
CABLE TV	TIME WARNER	816-358-8833
	COMCAST	816-833-3400

THE CONTRACTOR MAY ALSO UTILIZE THE FOLLOWING TOLL FREE PHONE NUMBER PROVIDED BY "MISSOURI ONE CALL SYSTEM, INC.": 1-(800)-DIG RITE. THIS PHONE NUMBER IS APPLICABLE ANYWHERE WITHIN THE STATE OF MISSOURI. PRIOR TO COMMENCEMENT OF WORK, THE CONTRACTOR SHALL NOTIFY ALL THOSE COMPANIES WHICH HAVE FACILITIES IN THE NEAR VICINITY OF THE CONSTRUCTION TO BE PERFORMED.

- PRIOR TO ORDERING PREFRABRICATED STRUCTURES, SHOP DRAWINGS SHALL BE SUBMITTED TO THE DESIGN ENGINEER FOR APPROVAL.
- THE CONTRACTOR SHALL PROTECT ALL MAJOR TREES FROM DAMAGE. NO TREE SHALL BE REMOVED WITHOUT PERMISSION OF THE OWNER, UNLESS SHOWN OTHERWISE.
- CLEARING AND GRUBBING OPERATIONS AND DISPOSAL OF ALL DEBRIS SHALL BE PERFORMED BY THE CONTRACTOR IN STRICT ACCORDANCE WITH ALL LOCAL CODES AND ORDINANCES.
- ALL MANHOLES, CATCH BASINS, UTILITY VALVES AND METER PITS TO BE ADJUSTED OR REBUILT TO GRADE AS REQUIRED. ALL EXISTING UTILITIES SHALL BE ADJUSTED AS REQUIRED
- ALL EXCESS AND UNSUITABLE MATERIAL SHALL BE DISPOSED OF AT A LOCATION OFF SITE PROVIDED BY THE CONTRACTOR.
- SUBGRADE SOIL FOR ALL CONCRETE STRUCTURES, REGARDLESS OF THE TYPE OR LOCATION, SHALL BE FIRM, DENSE AND THOROUGHLY COMPACTED AND CONSOLIDATED; SHALL BE FREE FROM MUCK AND MUD; AND SHALL BE SUFFICIENTLY STABLE TO REMAIN FIRM AND INTACT UNDER THE FEET OF THE WORKMEN OR MACHINERY ENGAGED IN SUBGRADE SURFACING, LAYING REINFORCING STEEL, AND DEPOSITING CONCRETE THEREON. IN ALL CASES WHERE SUBSOIL IS MUCKY OR WORKS INTO MUD OR MUCK DURING SUCH OPERATION, A SEAL COURSE OF EITHER CONCRETE OR ROCK SHALL BE PLACED BELOW SUBGRADE TO PROVIDE A FIRM BASE FOR WORKING AND FOR PLACING THE FLOOR SLAB.
- ALL EXCAVATION SHALL BE UNCLASSIFIED. NO SEPARATE PAYMENT WILL BE MADE FOR ROCK EXCAVATION.

NOTE:

- BY USE OF THESE PLANS THE CONTRACTOR AGREES THAT HE/SHE SHALL BE SOLELY RESPONSIBLE FOR THE SAFETY OF THE CONSTRUCTION WORKERS AND OF THE PUBLIC.
- ALL CONSTRUCTION SHALL CONFORM TO THE SPECIFICATIONS SET FORTH BY THE KANSAS CITY CHAPTER OF THE AMERICAN PUBLIC WORKS ASSOCIATION AND THE CITY OF LEE'S SUMMIT, MISSOURI, WHICHEVER IS MORE STRICT.
- THE CONTRACTOR SHALL CONTACT THE CITY'S DEVELOPMENT SERVICES ENGINEERING INSPECTORS 48 HOURS PRIOR TO ANY LAND DISTURBANCE WORK AT (816)969-1200.

SPECIFICATIONS

ALL WORK PERFORMED AND MATERIALS FURNISHED WITHIN PUBLIC RIGHT-OF-WAY SHALL BE IN ACCORDANCE WITH THE REQUIREMENTS OF CITY OF LEE'S SUMMIT, MISSOURI. THE CONSTRUCTION AND MATERIALS FOR THIS PROJECT SHALL BE IN ACCORDANCE WITH THE CURRENT SPECIFICATIONS OF THE "AMERICAN PUBLIC WORKS ASSOCIATION, KANSAS CITY METROPOLITAN CHAPTER" AND ARE HEREBY MADE THE SPECIFICATIONS FOR THIS SET OF PLANS BY REFERENCE AS THOUGH FULLY SET FORTH HEREIN.



GENERAL LOCATION



SCALE: 1"= 500'

FLOOD NOTE:

THIS PROPERTY LIES WITHIN FLOOD ZONE X, DEFINED AS AREAS OF DETERMINED TO BE OUTSIDE THE 0.2% ANNUAL CHANCE FLOODPLAIN, AS SHOWN ON THE FLOOD INSURANCE RATE MAP, PREPARED BY THE FEDERAL EMERGENCY AGENCY'S NATIONAL FLOOD INSURANCE PROGRAM FOR LEE'S SUMMIT, JACKSON COUNTY, MISSOURI, MAP NUMBER 29095C0409G AND DATED JANUARY 20, 2017.

PROJECT BENCHMARKS

BENCHMARK 1 ELEV.: 982.17  
SET 5 PUNCH HOLES IN THE TOP OF A SOUTHWEST FLANGE BOLT ON A FIRE HYDRANT IN THE SOUTHEAST QUADRANT OF SOUTH RING ROAD AND DRIVE ENTRANCE SOUTHWEST OF THE HELICOPTER PAD.

BENCHMARK 2 ELEV.: 983.85  
SET 5 PUNCH HOLES IN THE TOP OF A SOUTHWEST FLANGE BOLT ON A FIRE HYDRANT IN THE SOUTHEAST QUADRANT OF SOUTH RING ROAD AND PARK LOT E TO 50± DUE SOUTH OF THE SOUTHWEST CORNER OF MEDICAL OFFICE BUILDING.

LEGAL DESCRIPTION:

ALL OF LOT 1, SAINT LUKES HOSPITAL OF LEE'S SUMMIT LOTS 1 & 2, A SUBDIVISION OF LAND IN THE CITY OF LEE'S SUMMIT, JACKSON COUNTY, MISSOURI.

PREPARED & SUBMITTED BY:

McCLURE

1700 SWIFT STREET, SUITE 100  
NORTH KANSAS CITY, MISSOURI 64116



ENGINEER

DATE

ACCEPTED BY:

DATE

DESIGN ENGINEER

MATT EBLEN  
1700 SWIFT AVE, SUITE 100  
NORTH KANSAS CITY, MO  
913-307-2588  
MEBLEN@MECRESULTS.COM

SUMMARY OF QUANTITIES

ITEM DESCRIPTION	UNITS	QUANTITY
8" PVC PIPE (SDR-26)	L.F.	436
4'-0" I.D. SANITARY MANHOLE	EACH	3
15" R.C.P. (CLASS III)	L.F.	93
18" R.C.P. (CLASS III)	L.F.	108
30" R.C.P. (CLASS III)	L.F.	498
4'x4' CURB INLET	EACH	1
5'x4' CURB INLET	EACH	2
5'x5' CURB INLET	EACH	1
6'x5' CURB INLET	EACH	1
8'x5' CURB INLET	EACH	2
4'x4' AREA INLET	EACH	2
11'x3' CURB INLET CONVERTED TO JUNCTION BOX	EACH	1
STREET REPAIR & CURB REPLACEMENT	L.F.	48
CONNECTION TO EXISTING STRUCTURE	EACH	5
8" PVC C900 PIPE	L.F.	364
CONNECTIONS TO EXISTING	EACH	2
8"x6" TEE	EACH	2
8"x6" TEE AND FIRE HYDRANT	EACH	3
6" GATE VALVE	EACH	5
8" GATE VALVE	EACH	2
45° HORIZONTAL BEND	EACH	7
11 1/4° HORIZONTAL BEND	EACH	1
22 1/2° HORIZONTAL BEND	EACH	2
8" SOLID SLEEVE	EACH	2



McCLURE™  
making lives better.

1700 Swift Street, Suite 100  
North Kansas City, Missouri 64116  
816-756-0444

NOTICE:  
McClure Engineering Company waives any and all responsibility and liability for problems which arise from failure to follow these Plans, Specifications, and the engineering intent they convey, or for problems which arise from failure to obtain and/or follow the engineers guidance with respect to any errors, omissions, inconsistencies, ambiguities, or conflicts which are alleged.

COPYRIGHT:  
Copyright and property rights in these documents are expressly reserved by McClure Engineering Company. No reproductions, changes, or copies in any manner shall be made without obtaining prior written consent from McClure Engineering Company.

SAINT LUKE'S FLEX FACILITY EXPANSION PRIVATE  
SANITARY SEWER, PRIVATE STORM SEWER &  
PUBLIC WATER MAIN IMPROVEMENTS  
LEE'S SUMMIT, MISSOURI

COVER SHEET

ISSUE DATE  
11-18-2019

PER CITY COMMENTS 01-17-2020  
PER CITY COMMENTS 01-31-2020

ENGINEER MVE  
DRAWN BY KJL  
DESIGNED BY KJL  
CHECKED BY MVE

McCLURE PROJECT No.  
190891-000  
SHEET NO.

C300



STA. 0+00, LINE 1 = EXIST. SANITARY  
MANHOLE ~ INSTALL 177.15 L.F. 8" PVC PIPE  
(SDR-26) (SE), OUTSIDE DROP CONNECTION.  
DISCONNECT AND ABANDON EXIST.  
SANITARY SEWER TO EAST. BEGIN LINE 1  
N100147.044, E2822392.572

MANHOLE 1-A  
STA.1+81.15, LINE 1 ~ CONST. 4'-0" I.D.  
SANITARY MANHOLE. INSTALL 72.52 L.F.  
8" PVC PIPE (SDR-26) (E).  
N1009968.654, E2822424.064

MANHOLE 1-B  
STA. 2+57.66, LINE 1 ~ CONST. 4'-0" I.D.  
SANITARY MANHOLE. INSTALL 186.13  
L.F. 8" PVC PIPE (SDR-26) (NE).  
N1009943.979, E2822496.491

MANHOLE 1-C  
STA. 4+47.79, LINE 1 ~ CONST. 4'-0" I.D.  
SANITARY MANHOLE OVER EXIST. 8"  
SANITARY SEWER AND EXIST. 6"  
SANITARY SEWER SERVICE LINE.  
DISCONNECT AND ABANDON EXISTING  
SANITARY SEWER TO THE WEST.  
END LINE 1  
N1009978.252, E2822683.498

NOTE:  
"ALL CONSTRUCTION SHALL CONFORM TO THE SPECIFICATIONS SET FORTH BY  
THE KANSAS CITY CHAPTER OF THE AMERICAN PUBLIC WORKS ASSOCIATION  
AND THE CITY OF LEE'S SUMMIT, MISSOURI, WHICHEVER IS MORE STRICT."

### LEGEND

C&G	CURB & GUTTER
ESMT	EASEMENT
MS	METAL SIGN
FO	FIBER OPTIC
RCP	REINFORCED CONCRETE PIPE
SAN	SANITARY SEWER
WM	WATER METER
DWS	DOMESTIC WATER SERVICE
UTELE	UNDERGROUND TELEPHONE
T-UTEL	UNDERGROUND TELEPHONE
UPOWR	UNDERGROUND POWER
IRW	IRRIGATION
IR-COND	CONDUIT
LPCB	LIGHT POLE CONCRETE BASE
ETP	ELECTRIC TRANSFORMER
FPW	FIRE PROTECTION WATER
UP	UNDERGROUND POWER
T	TRANSFORMER
X	PROPOSED BUILDING
	HELIPAD
	TREE TO BE REMOVED



**McCLURE™**  
making lives better.

1700 Swift Street, Suite 100  
North Kansas City, Missouri 64116  
816-756-0444

NOTICE:  
McClure Engineering Company waives any and  
all responsibility and liability for problems which  
arise from failure to follow these Plans,  
Specifications, and the engineering intent they  
convey, or for problems which arise from failure  
to obtain and/or follow the engineers guidance  
with respect to any errors, omissions,  
inconsistencies, ambiguities, or conflicts which  
are alleged.

COPYRIGHT:  
Copyright and property rights in these  
documents are expressly reserved by McClure  
Engineering Company. No reproductions,  
changes, or copies in any manner shall be  
made without obtaining prior written consent  
from McClure Engineering Company.

SANT LUKES FLEX FACILITY EXPANSION PRIVATE  
SANITARY SEWER, PRIVATE STORM SEWER &  
PUBLIC WATER MAIN IMPROVEMENTS  
LEE'S SUMMIT, MISSOURI

SANITARY SEWER PLAN & PROFILE



ISSUE DATE  
11-18-2019

PER CITY COMMENTS	01-17-2020
SANITARY SEWER PROFILE	01-22-2020
PER CITY COMMENTS	01-31-2020

ENGINEER  
MVE  
DRAWN BY  
KLJ

DESIGNED BY  
KLJ  
CHECKED BY  
MVE

McCLURE PROJECT No.  
190891-000  
SHEET No.

C301







STA. 0+00, LINE 2 = STA. 0+00, LINE 3 = CTR.  
EXIST. JUNCTION BOX ~ INSTALL 56.77 L.F. 15"  
R.C.P.(SW). INSTALL 36.01 L.F. 15" R.C.P. (S).  
BEGIN LINES 2 & 3

STA. 0+00, LINE 4 = CTR. EXIST. 11'x3' CURB  
INLET ~ INSTALL 53.99 L.F. 18" R.C.P. (SW) &  
CONST. 48 L.F. STREET & CURB REPAIR.  
BEGIN LINE 4

STA. 0+57.92, LINE 4 ~ CONST. NEW 4'x4'  
AREA INLET (OPENING TO SW). END LINE 4

STA. 0+41.41, LINE 3 ~ CONST. NEW  
5'x5' CURB INLET(NSB). END LINE 3

REMOVE EXISTING 15" R.C.P.  
AND EXISTING CURB INLET

STA. 0+60.90, LINE 2 ~ CONST. NEW 4'x4'  
AREA INLET (OPENINGS TO E & W). END  
LINE 2

#### LEGEND

C&G	CURB & GUTTER
ESMT	EASEMENT
MS	METAL SIGN
FO	FIBER OPTIC
RCP	REINFORCED CONCRETE PIPE
SAN	SANITARY SEWER
WM	WATER METER
DWS	DOMESTIC WATER SERVICE
UTELE	UNDERGROUND TELEPHONE
T-UTEL	UNDERGROUND TELEPHONE
UPOWR	UNDERGROUND POWER
IRW	IRRIGATION
IR-COND	CONDUIT
LPCB	LIGHT POLE CONCRETE BASE
ETP	ELECTRIC TRANSFORMER
FPW	FIRE PROTECTION WATER
UP	UNDERGROUND POWER
T	TRANSFORMER



1700 Swift Street, Suite 100  
North Kansas City, Missouri 64116  
816-756-0444

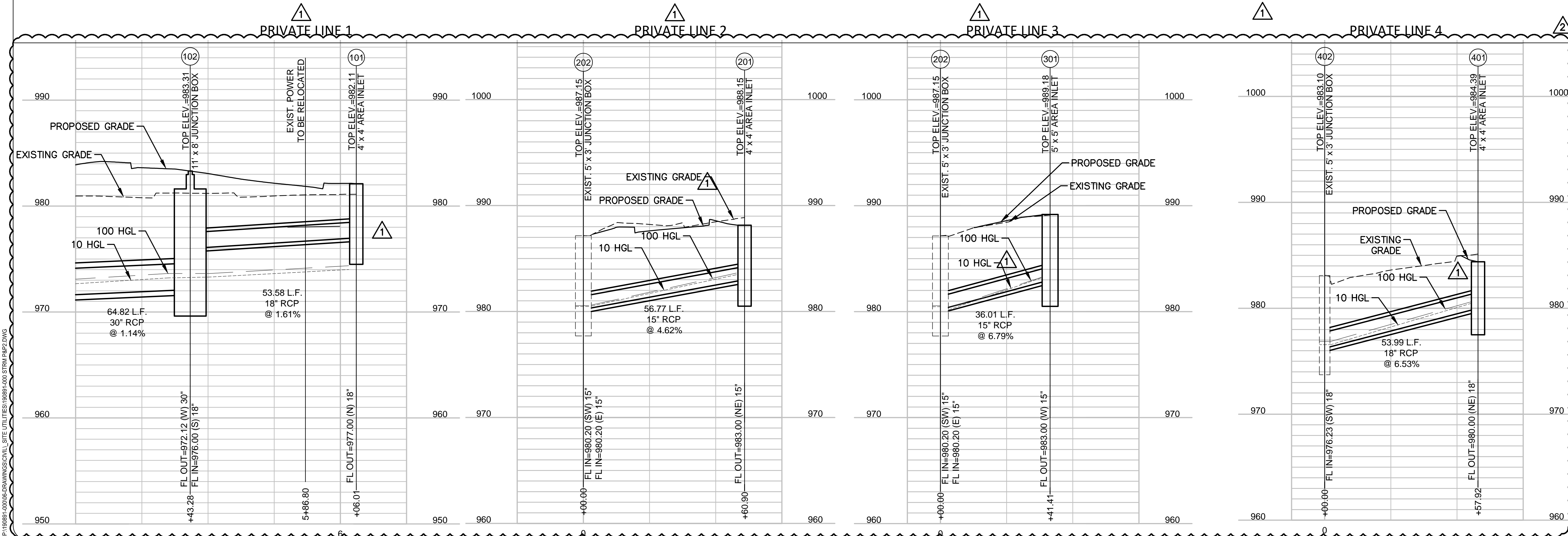
NOTICE:  
McClure Engineering Company waives any and  
all responsibility and liability for problems which  
arise from failure to follow these Plans,  
Specifications, and the engineering intent they  
convey, or for problems which arise from failure  
to obtain and/or follow the engineers guidance  
with respect to any errors, omissions,  
inconsistencies, ambiguities, or conflicts which  
are alleged.

COPYRIGHT:  
Copyright and property rights in these  
documents are expressly reserved by McClure  
Engineering Company. No reproductions,  
changes, or copies in any manner shall be  
made without obtaining prior written consent  
from McClure Engineering Company.

#### NOTE:

"ALL CONSTRUCTION SHALL CONFORM TO THE SPECIFICATIONS SET FORTH BY  
THE KANSAS CITY CHAPTER OF THE AMERICAN PUBLIC WORKS ASSOCIATION  
AND THE CITY OF LEE'S SUMMIT, MISSOURI, WHICHEVER IS MORE STRICT."

P:\190891-000\DRAWINGS\CIVIL SITE UTILITIES\190891-000 STRM P&P2.DWG



SAINT LUKE'S FLEX FACILITY EXPANSION PRIVATE  
SANITARY SEWER, PRIVATE STORM SEWER &  
PUBLIC WATER MAIN IMPROVEMENTS  
LEE'S SUMMIT, MISSOURI

STORM SEWER PLAN & PROFILES (2)



ISSUE DATE  
11-18-2019

REVISIONS

PER CITY COMMENTS	01-17-2020
PER CITY COMMENTS	01-31-2020

ENGINEER  
MVE  
DRAWN BY  
KLJ

DESIGNED BY  
KLJ  
CHECKED BY  
MVE

McCLURE PROJECT No.  
190891-000  
SHEET NO.

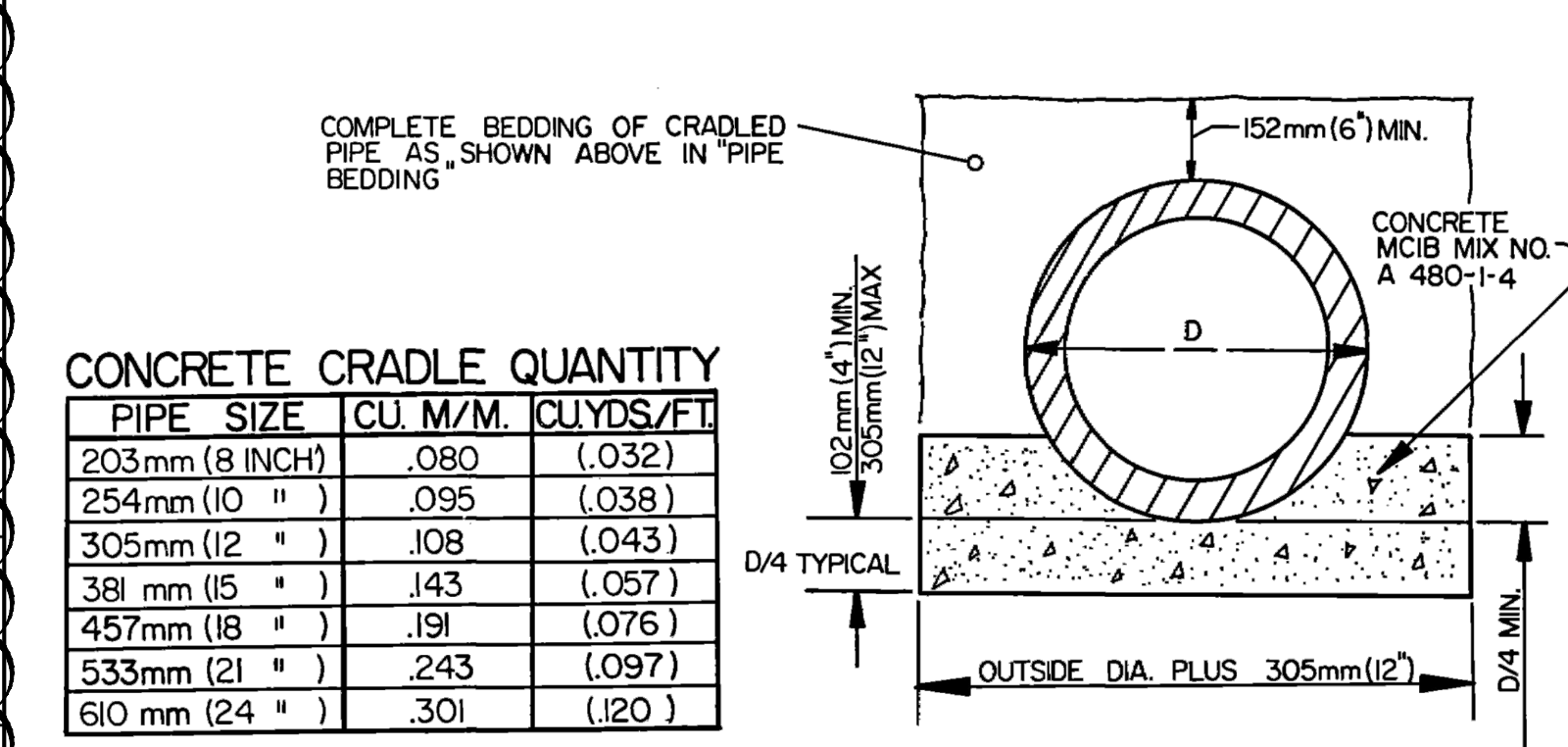
C303



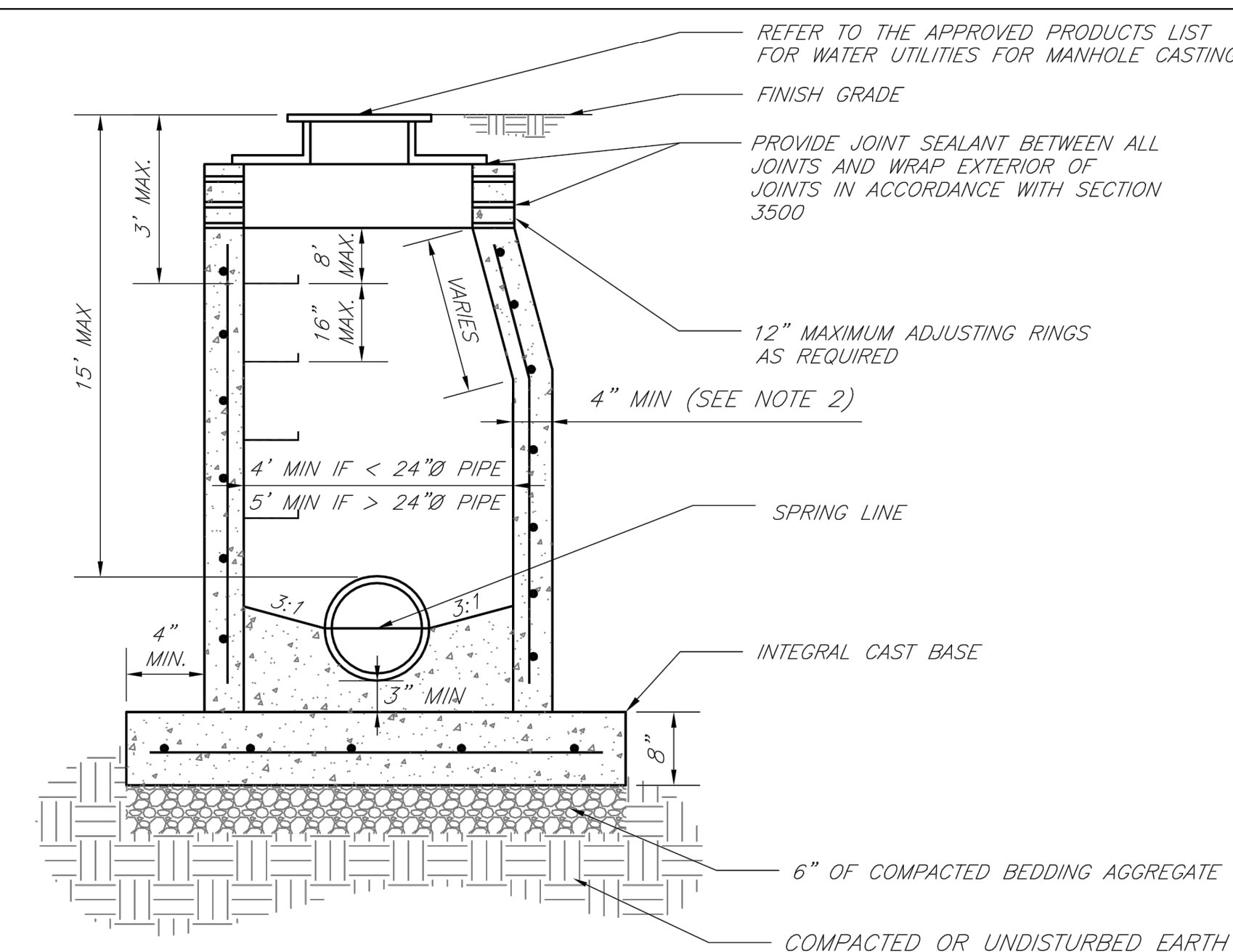
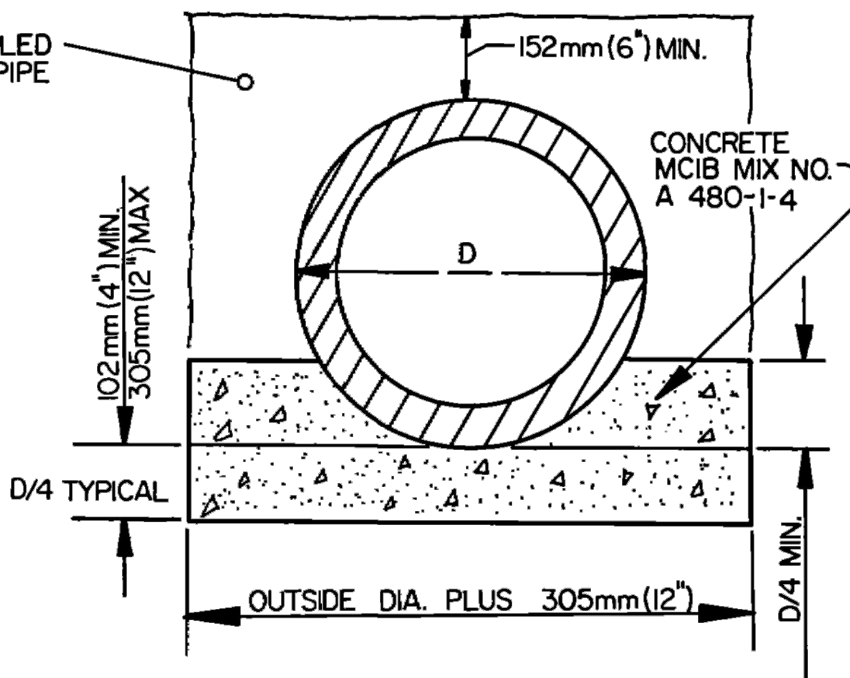


REINFORCING			** INCREASE IN MULTIPLES OF 6" (7"-0") MAX WITHOUT SPECIAL DESIGN. (SEE PROJECT PLANS FOR DETAILS)	9. REINFORCING OF COVERS IN STREETS REQUIRE SPECIAL DESIGN.	10. FOR RING AND COVER SEE THE STORMWATER APPROVED PRODUCT LIST.
BARS	BAR SIZE	SPACING (IN.)			
H	4	12			
V	4	12			
L	5	6			
W	5	6			

Drawn By: MJF Checked By: DL Date: 04/17 Proj. #: STM-3	Project: STANDARD DETAILS CITY OF LEE'S SUMMIT, MO LEE'S SUMMIT, JACKSON COUNTY, MO Sheet Name:
--	---



PIPE SIZE	CU. M/M.	CU.YDS/F.
203mm (8 INCH)	.080	(.032)
254mm (10 " )	.095	(.038)
305mm (12 " )	.108	(.043)
381 mm (15 " )	.143	(.057)
457mm (18 " )	.191	(.076)
533mm (21 " )	.243	(.097)
610 mm (24 " )	.301	(.120)



NOTES:

1. PRECAST CONCRETE MANHOLES SHALL CONFORM TO ASTM C478 EXCEPT AS MODIFIED BY THE SPECIFICATIONS.
2. A WALL THICKNESS NOT LESS THAN ONE-TWELFTH ( $\frac{1}{12}$ ) OF THE INSIDE DIAMETER OR 4", WHICHEVER IS GREATER, SHALL BE USED WHEN THE MANHOLE DEPTH IS LESS THAN 15'.
3. WATERPROOFING SHALL BE REQUIRED ON THE OUTSIDE OF MANHOLES. THE WATERPROOFING SHALL CONSIST OF A TOTAL DRY FILM THICKNESS OF NOT LESS THAN 14 MILS OF BITUMINOUS COATING.
4. ONLY ECCENTRIC MANHOLE CONES WILL BE ALLOWED UNLESS OTHERWISE APPROVED BY THE CITY ENGINEER.
5. THE FULL CONCRETE FLOW CHANNEL FOR SIDE BRANCHES SHALL BE PLACED TO PROVIDE A SMOOTH TRANSITION INTO THE FLOW LINE.
6. REFER TO THE APPROVED PRODUCTS LIST FOR WATER UTILITIES FOR APPROVED MANHOLE GASKET MODELS.
7. REFER TO THE APPROVED PRODUCTS LIST FOR APPROVED STEPS.

THIS DRAWING SUPERSEDES  
STANDARD DRAWING PB  
ENTRY NO. 81801  
REVISED 9-19-75

REVISED			
BY	DATE	APP	DATE

**ADOPTED**

---

DIRECTOR OF PUBLIC WORKS

---

ENTRY NO. **780891**

KANSAS CITY, MISSOURI

**DEPARTMENT OF  
PUBLIC WORKS**

ENGINEERING  
DIVISION

APPROVED

---

CITY ENGINEER

---

DATE

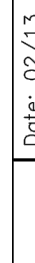
PIPE BEDDING  
& CRADLE FOR  
SANITARY SEWER PIPE

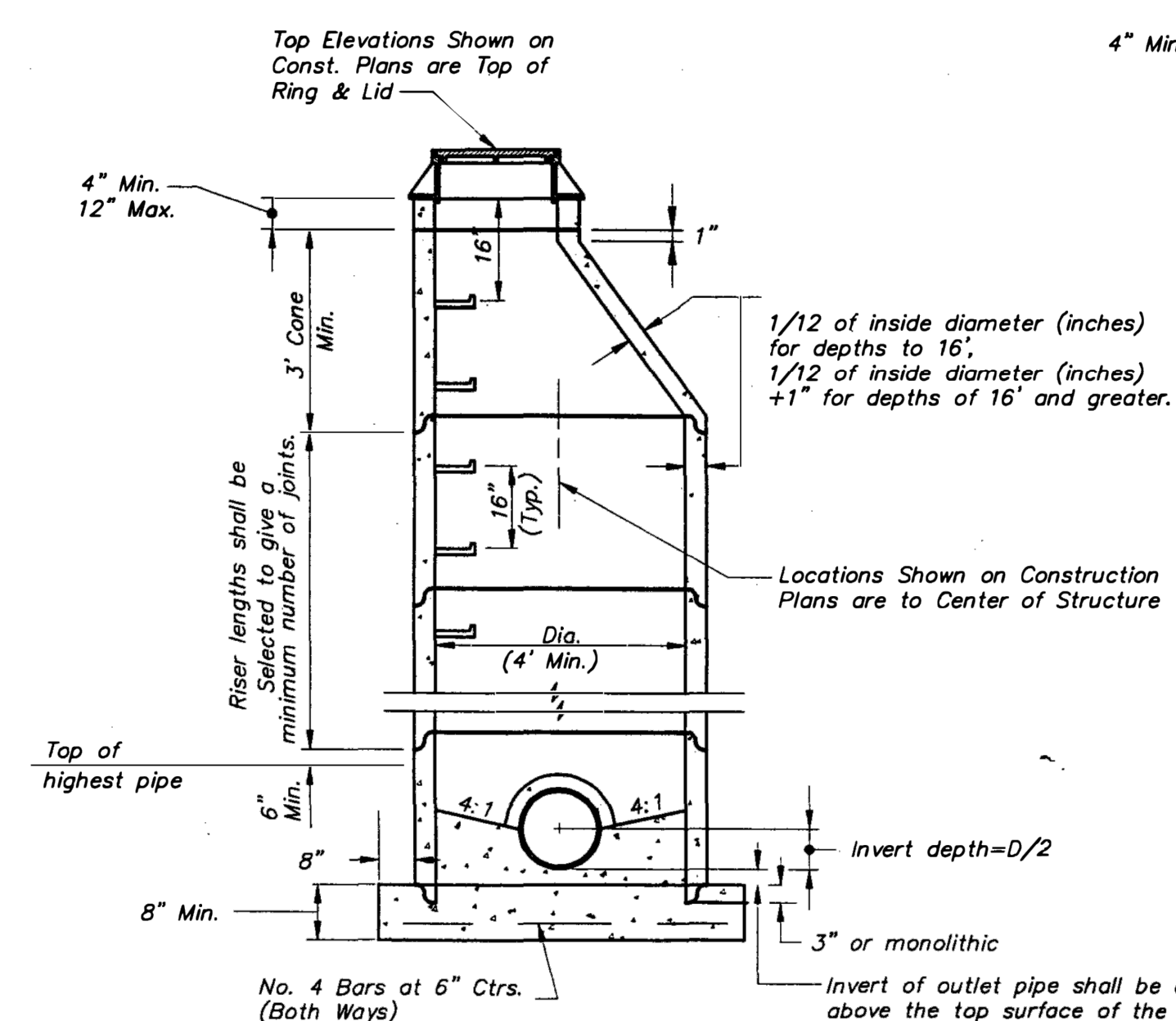
STANDARD  
PLAN

PB-2

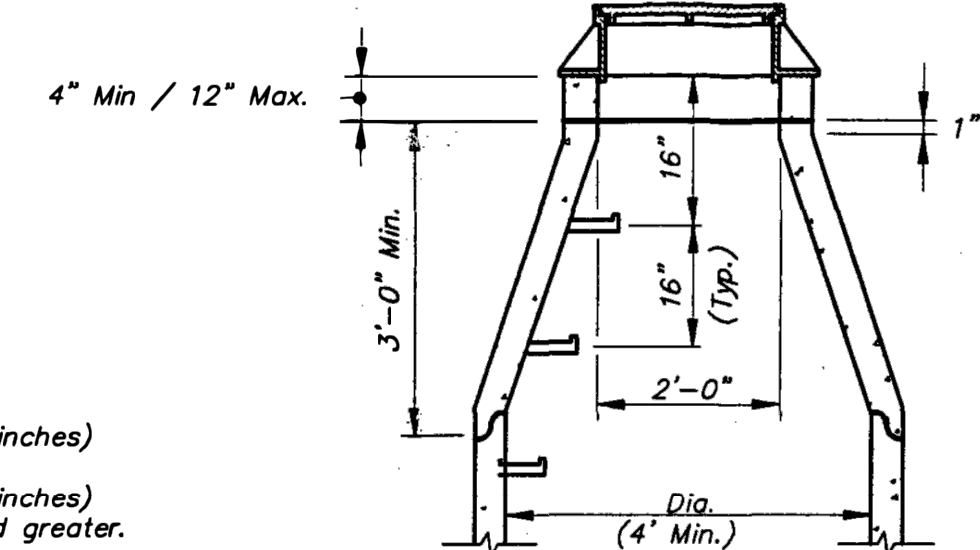
	<b>LEE'S SUMMIT</b> <b>MISSOURI</b> <small>PUBLIC WORKS ENGINEERING DIVISION   1220 SE GREEN STREET   LEE'S SUMMIT, MO 64063</small>		Date: 02/13 Drawn By: JN Checked By: DL FILE: SAN-2
	STANDARD PRECAST MANHOLE — SANITARY SEWER		Rev: 1/14 Rev:



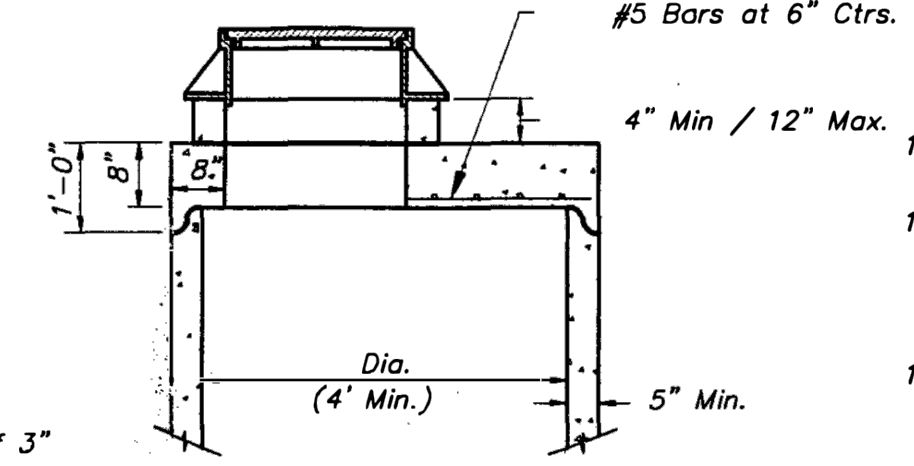
	<b>LEE'S SUMMIT</b> <b>MISSOURI</b> PUBLIC WORKS ENGINEERING DIVISION   120 SE GREEN STREET   LEE'S SUMMIT, MO 64083	Date: 02/13
		Drawn By: JN
		Checked By: DL
		FILE: SAN-5
		Rev: 1/14
<b>MANHOLE WALL CONNECTIONS</b>		



### STANDARD PRECAST MANHOLE (ECCENTRIC CONE)



**STANDARD PRECAST MANHOLE**  
**(CONCENTRIC CONE)**  
(See Eccentric Cone For Other Details)




STANDARD PRECAST MANHOLE  
(SHALLOW TYPE)  
(See Eccentric Cone For Other Details)

GENERAL NOTES:

1. All manholes are to be precast concrete and of Eccentric Cone type unless otherwise specified.
2. Manhole top adjustments shall be accomplished by the use of concrete adjustment rings.
3. Top of manhole casting shall be set flush and on same slope as finished surface or as directed by the Engineer.
4. Reinforcement in all sections shall equal or exceed A.S.T.M. C-478 specifications.
5. The engineer shall designate modifications for manholes with special designs.
6. The inside diameter of the manhole shall be 4'-0" for pipe diameters from 12" thru 24", 5'-0" for pipe diameters from 27" thru 36", and 6'-0" for pipe diameters 42" thru 48".
8. Clearance Tolerance of Pipe Openings: The Maximum Allowable Pipe Opening on a Horizontal Axis Shall be the Outside Diameter of the Pipe Plus 12". The Maximum Allowable Pipe Opening on Vertical Axis Shall be the Outside Diameter Plus 8". The Minimum Clearance Between the Outside Surface of an Installed pipe and the Concrete of the Manhole Shall be 2".
9. Installation of Pipe Openings: All required pipe openings shall be plant cast in manhole units. Field alterations of openings will be permitted provided walls are scored with a masonry saw to a depth sufficient to sever reinforcing steel. A chipping hammer may then be used to remove the concrete. Minimum distance between any two adjacent pipes shall be 4".
10. No direct payment for shaping floor or connecting pipes as shown on plans.
11. Ring & Cover to be Manenh R-1736, Clay & Bailey #2008, Deeter #1316, or approved equal. (Casting may vary by municipality, refer to plans & contract documents.)
12. Sanitary Sewers shall be coated and conform to Section 2600.

\* East Jordan is an approved manufacturer for casting.

		KANSAS CITY METROPOLITAN CHAPTER	
MANHOLE DETAILS		STANDARD DRAWING NUMBER MH - 1 ADOPTED: APRIL 17, 1996	



**NOTICE:**

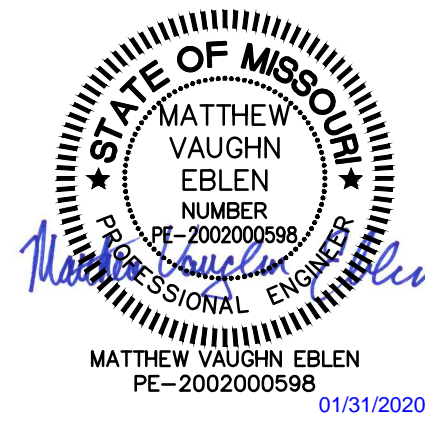
McClure Engineering Company waives any and all responsibility and liability for problems which arise from failure to follow these Plans, Specifications, and the engineering intent they convey, or for problems which arise from failure to obtain and/or follow the engineers guidance with respect to any errors, omissions, inconsistencies, ambiguities, or conflicts which are alleged.

**COPYRIGHT:**

Copyright and property rights in these documents are expressly reserved by McClure Engineering Company. No reproductions, changes, or copies in any manner shall be made without obtaining prior written consent from McClure Engineering Company.

**SAINT LUKE'S FLEX FACILITY EXPANSION PRIVATE  
SANITARY SEWER, PRIVATE STORM SEWER &  
PUBLIC WATER MAIN IMPROVEMENTS  
LEE'S SUMMIT, MISSOURI**

## SANITARY & STORM SEWER DETAILS

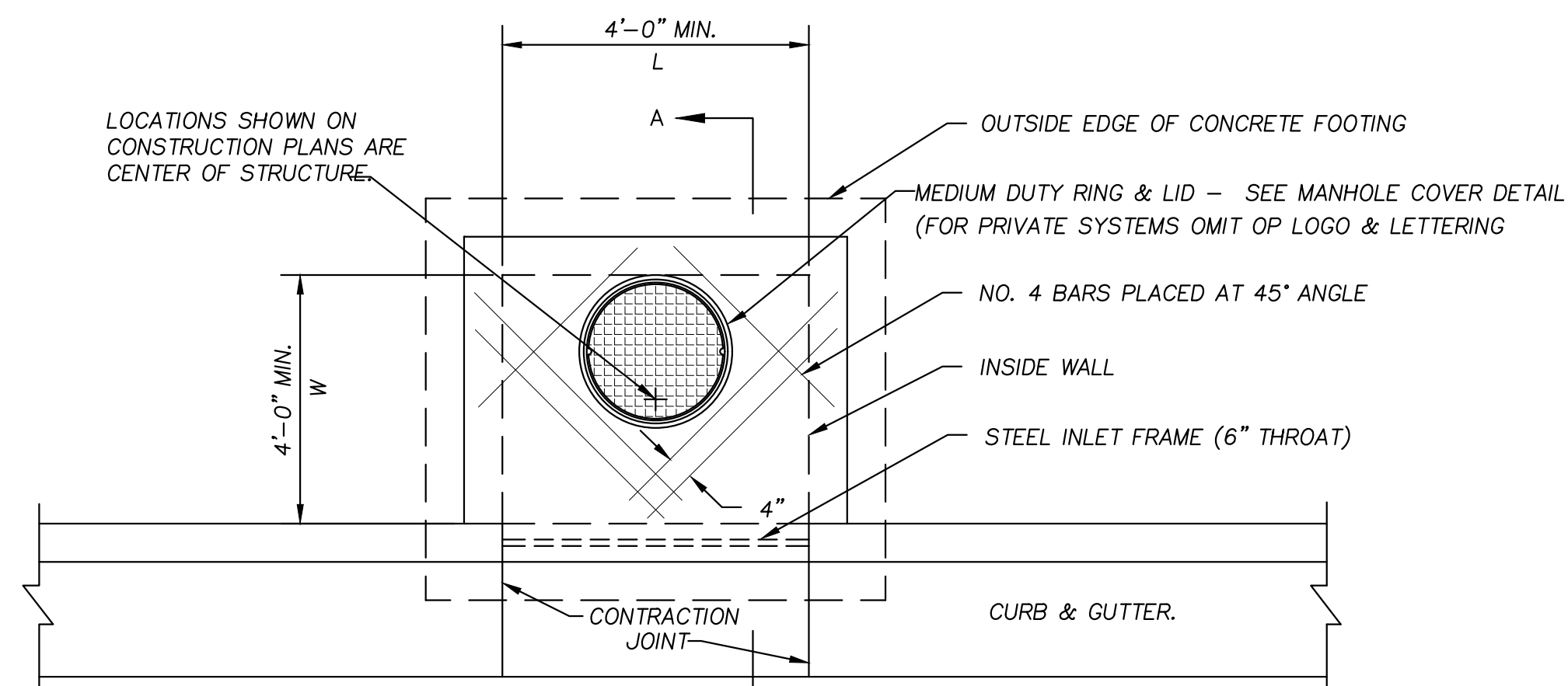


ISSUE DATE		11-18-2019
1	PER CITY COMMENTS	01-17-2020

ENGINEER	DESIGNED BY
MVE	KLJ
DRAWN BY	CHECKED BY
KLJ	MVE

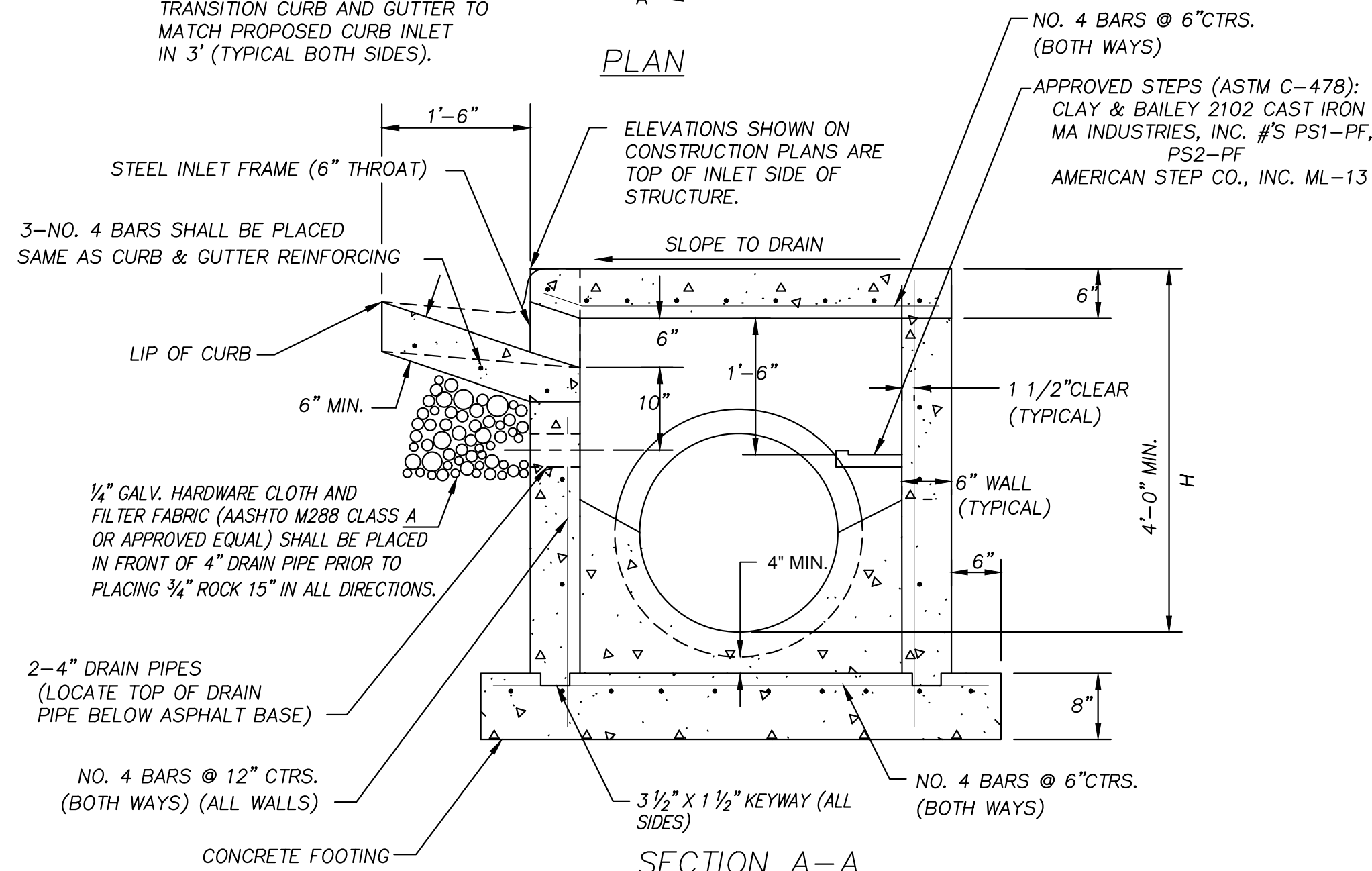
McCLURE PROJECT No.  
190891-000  
SHEET NO.  
**C304**



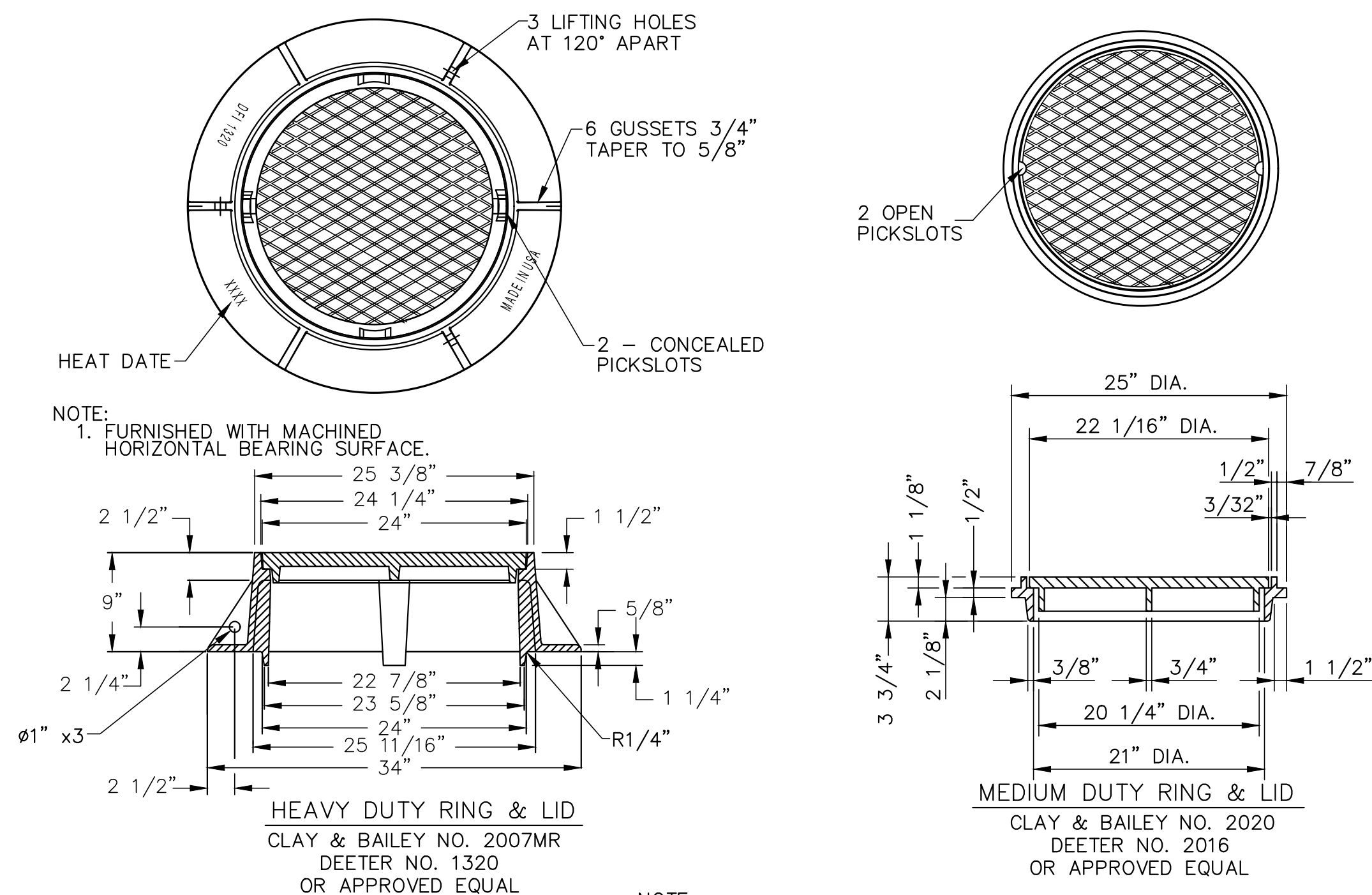


NOTE:  
TRANSITION CURB AND GUTTER TO  
MATCH PROPOSED CURB INLET  
IN 3' (TYPICAL BOTH SIDES).

PLAN

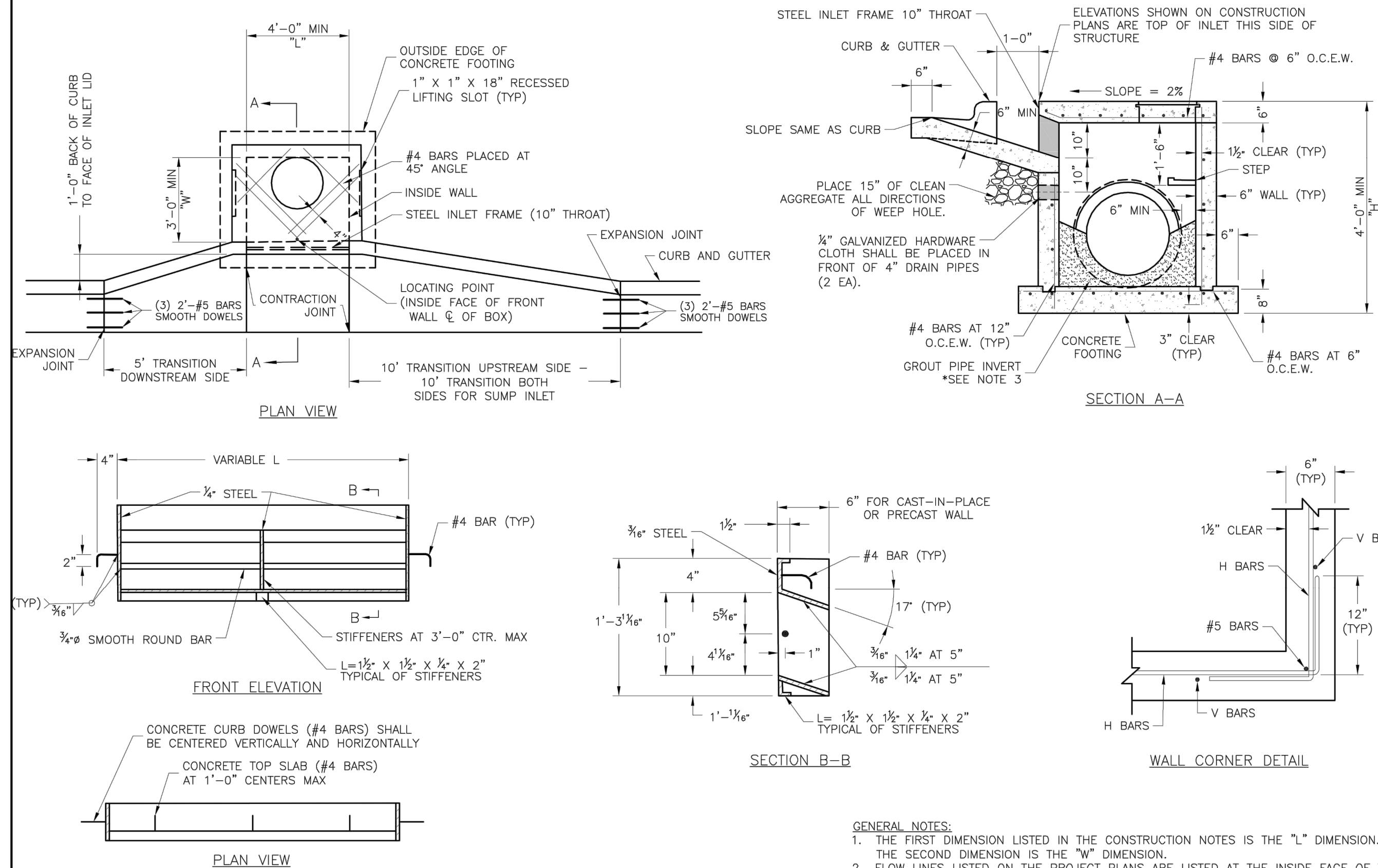


## NON-SETBACK CURB INLET



NOTE:  
1. MUD RING IS OPTIONAL.

## PRIVATE MANHOLE COVER DETAIL

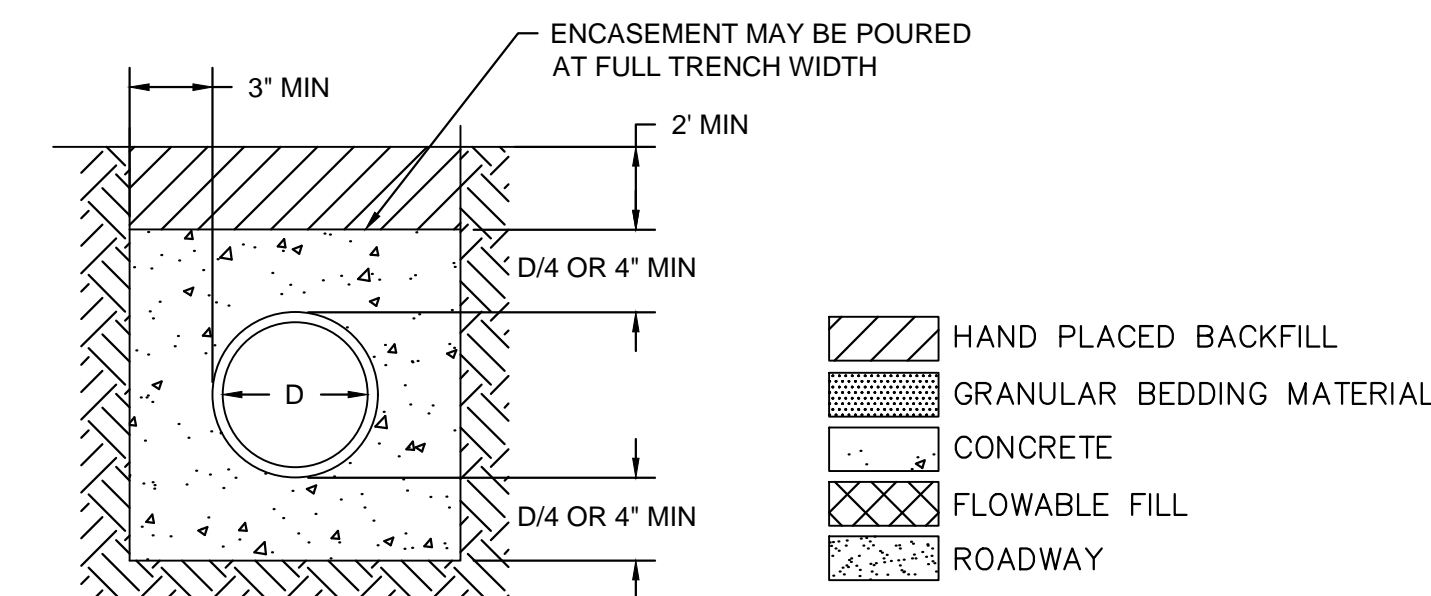


## STEEL FRAME NOTES:

1. ALL WELDS SHALL BE PERFORMED IN ACCORDANCE WITH APPROPRIATE AWS SPECIFICATIONS AND PROCEDURES.
2. ALL WELDS ON EXPOSED SURFACES SHALL BE DRESSED SO AS TO PROVIDE A PLEASING FINISHED APPEARANCE.
3. THE ENTIRE FRAME SHALL BE PAINTED A SINGLE COAT OF CHEM-PRIME #37H-78 PRIMER (GRAY) OR EQUAL.

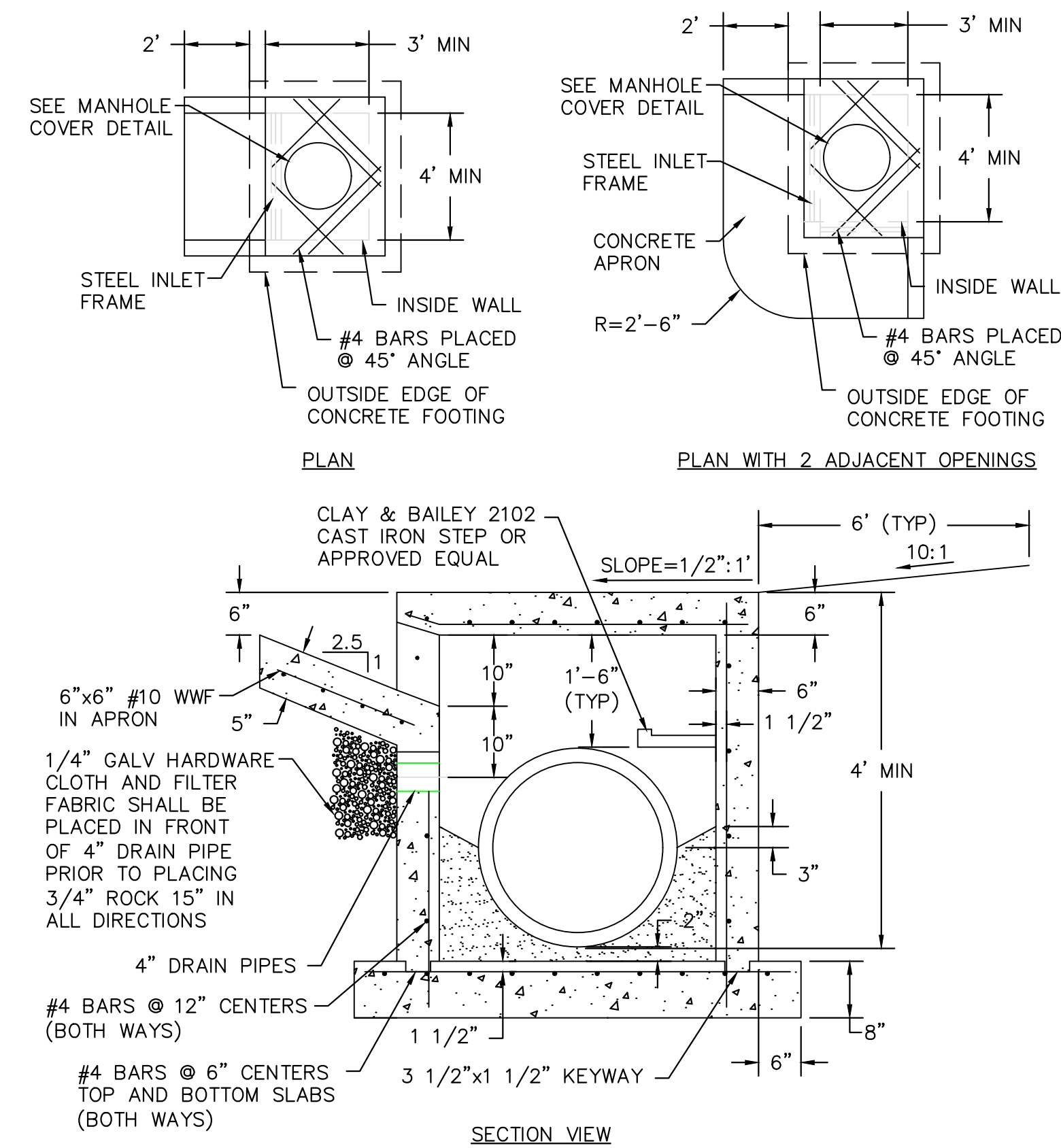
## GENERAL NOTES:

1. THE FIRST DIMENSION LISTED IN THE CONSTRUCTION NOTES IS THE "L" DIMENSION.
2. THE SECOND DIMENSION IS THE "W" DIMENSION.
3. FLOW LINES LISTED ON THE PROJECT PLANS ARE LISTED AT THE INSIDE FACE OF THE WALL.
4. FLOOR OF INLET GROUTED AND SHAPED TO MATCH PIPE INVERT TO PROVIDE SMOOTH FLOW.
5. LOCATE MH RING AND COVER ON BLANK WALL IF POSSIBLE.
6. STEPS SHALL BE SPACED AT 1'-4" O.C. VERTICALLY ON BLANK WALL IF POSSIBLE.
7. BEVEL ALL EXPOSED EDGES WITH 3/4" CHAMFER OR 1/2" TOOLED EDGE.
8. ON-GRADE INLETS SHALL CONFORM TO THE STREET GRADE AND SUMP INLETS SHALL BE LEVEL.
9. PRECAST LIDS SHALL BE PINNED, SEALED WITH NON-SHRINKABLE GROUT AND REMOVABLE FOR FUTURE MAINTENANCE.
10. LIFTING RINGS SHALL BE REMOVED AND SEALED WITH NON-SHRINKABLE GROUT AND REMOVABLE FOR FUTURE MAINTENANCE.
11. FOR RING AND COVER SEE THE STORMWATER APPROVED PRODUCT LIST.



## NOTES

1. GRANULAR FILL TO BE CRUSHED STONE OR PEA GRAVEL WITH NOT LESS THAN 95% PASSING 1/2" AND NOT LESS THAN 95% TO BE RETAINED ON A #8; TO BE PLACED IN NO MORE THAN 6 LAYERS.
2. TAMPED BACKFILL SHALL BE FINELY DIVIDED, JOB EXCAVATED MATERIAL FREE FROM DEBRIS, ORGANIC MATERIAL, AND STONES COMPACTED TO 95% MAXIMUM DENSITY AS DETERMINED BY AASHTO STANDARD, METHOD T-99. GRANULAR FILL MAY BE SUBSTITUTED FOR ALL OR PART OF TAMPED BACKFILL.
3. HAND-PLACE BACKFILL SHALL BE FINELY DIVIDED MATERIAL FREE FROM DEBRIS AND STONE.



## AREA INLET DETAILS

LEE'S SUMMIT  
MISSOURI

STANDARD DETAILS  
CITY OF LEE'S SUMMIT, MO  
LEE'S SUMMIT, JACKSON COUNTY, MO

STM-1

**McCLURE™**  
making lives better.

1700 Swift Street, Suite 100  
North Kansas City, Missouri 64116  
816-756-0444

NOTICE:  
McClure Engineering Company waives any and all responsibility and liability for problems which arise from failure to follow these Plans, Specifications, and the engineering intent they convey, or for problems which arise from failure to obtain and/or follow the engineers guidance with respect to any errors, omissions, inconsistencies, ambiguities, or conflicts which are alleged.

COPYRIGHT:  
Copyright and property rights in these documents are expressly reserved by McClure Engineering Company. No reproductions, changes, or copies in any manner shall be made without obtaining prior written consent from McClure Engineering Company.

SAINT LUKE'S FLEX FACILITY EXPANSION PRIVATE  
SANITARY SEWER, PRIVATE STORM SEWER &  
PUBLIC WATER MAIN IMPROVEMENTS  
LEE'S SUMMIT, MISSOURI

STORM SEWER DETAILS

STATE OF MISSOURI  
MATTHEW VAUGHN  
EBLEN  
PE-200200598  
PROFESSIONAL ENGINEER  
MATTHEW VAUGHN EBLEN  
PE-200200598  
01/31/2020

ISSUE DATE  
11-18-2019

REVISIONS

ENGINEER  
MVE

DRAWN BY  
KLJ

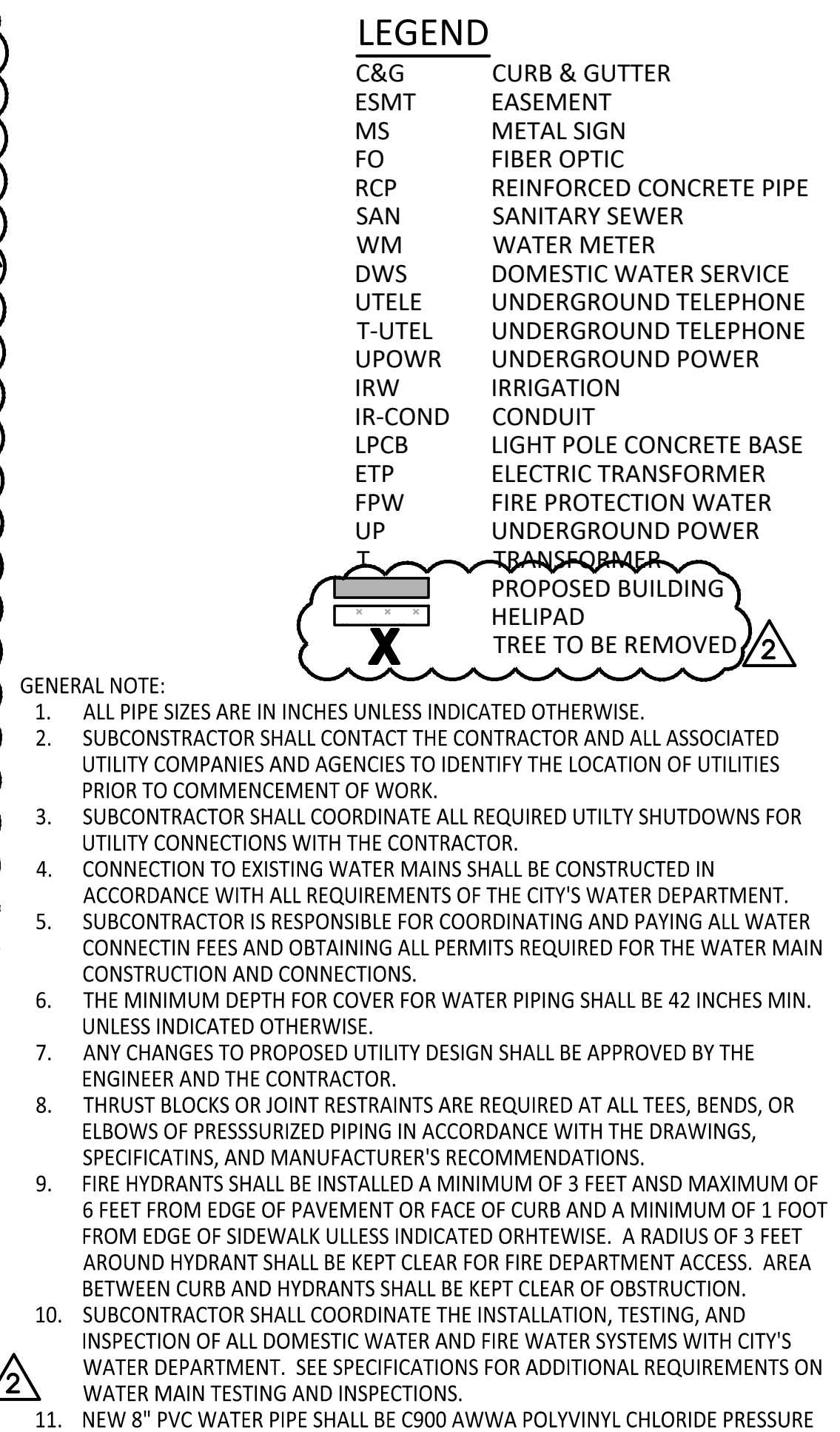
DESIGNED BY  
KLJ

CHECKED BY  
MVE

McCLURE PROJECT NO.  
190891-000  
SHEET NO.

C305





**NOTE:**  
ALL CONSTRUCTION SHALL CONFORM TO THE SPECIFICATIONS SET FORTH BY THE KANSAS CITY CHAPTER OF THE AMERICAN PUBLIC WORKS ASSOCIATION AND THE CITY OF LEE'S SUMMIT, MISSOURI, WHICHEVER IS MORE STRICT."



**McCLURE™**  
making lives better.

1700 Swift Street, Suite 100  
North Kansas City, Missouri 64116  
816-756-0444

NOTICE:  
McClure Engineering Company waives any and all responsibility and liability for problems which arise from failure to follow these Plans, Specifications, and the engineering intent they convey, or for problems which arise from failure to obtain and/or follow the engineers guidance with respect to any errors, omissions, inconsistencies, ambiguities, or conflicts which are alleged.

COPYRIGHT:  
Copyright and property rights in these documents are expressly reserved by McClure Engineering Company. No reproductions, changes, or copies in any manner shall be made without obtaining prior written consent from McClure Engineering Company.

SAINT LUKE'S FLEX FACILITY EXPANSION PRIVATE  
SANITARY SEWER, PRIVATE STORM SEWER &  
PUBLIC WATER MAIN IMPROVEMENTS  
LEE'S SUMMIT, MISSOURI

---

WATER LINE PLAN & PROFILE



ISSUE DATE	
11-18-2019	
REVISIONS	
1	PER CITY COMMENTS 01-17-2020
2	PER CITY COMMENTS 01-31-2020

ENGINEER  
MVE  
DRAWN BY  
KLJ

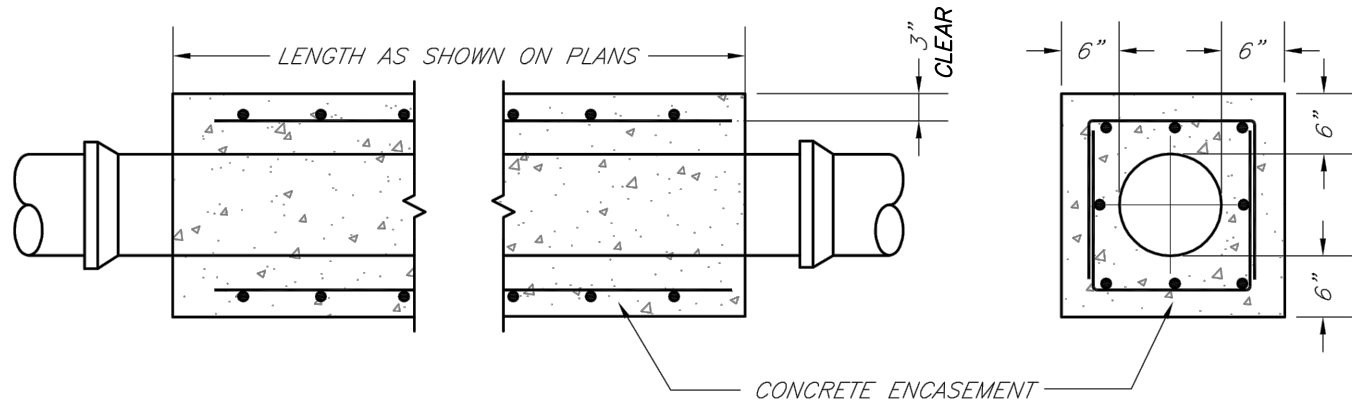
DESIGNED BY  
KLJ  
CHECKED BY  
MVE

McCLURE PROJECT No.  
190891-000

SHEET NO.

C401





NOTES:

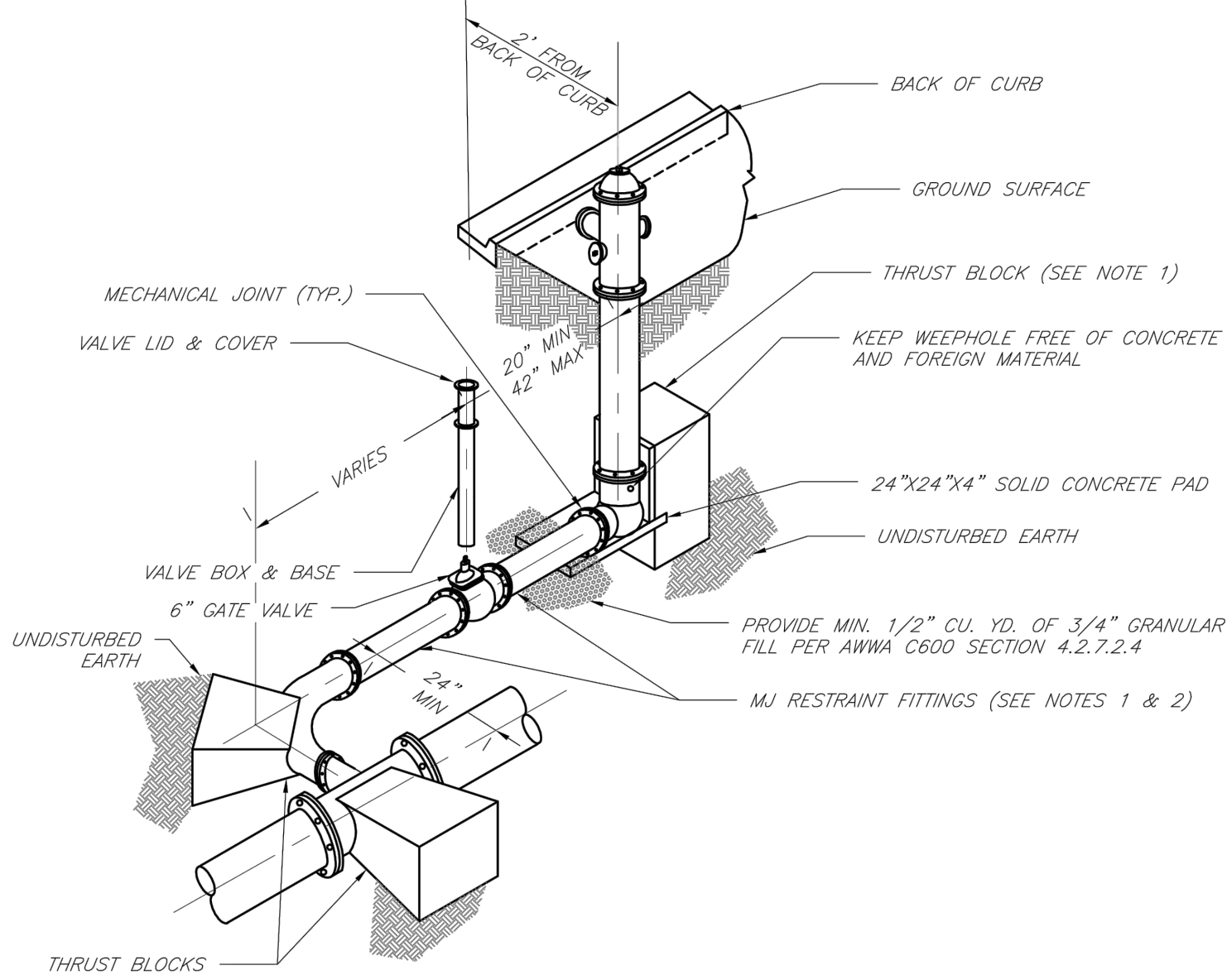
1. INTERMEDIATE BELLS SHALL BE ENCASED.
2. REINFORCING STEEL SHALL BE #4 @ 12" O.C. EACH WAY WITH A MINIMUM REBAR LAP OF 12".
3. THIS DETAIL IS FOR PIPES 12" AND SMALLER.



**LEE'S SUMMIT  
MISSOURI**  
PUBLIC WORKS ENGINEERING DIVISION | 220 SE GREEN STREET | LEE'S SUMMIT, MO 64063

**WATER PIPE ENCASEMENT**

Date:	02/13
Drawn By:	JN
Checked By:	DL
FILE:	WAT-4
Rev:	1/14
Rev:	



NOTES:

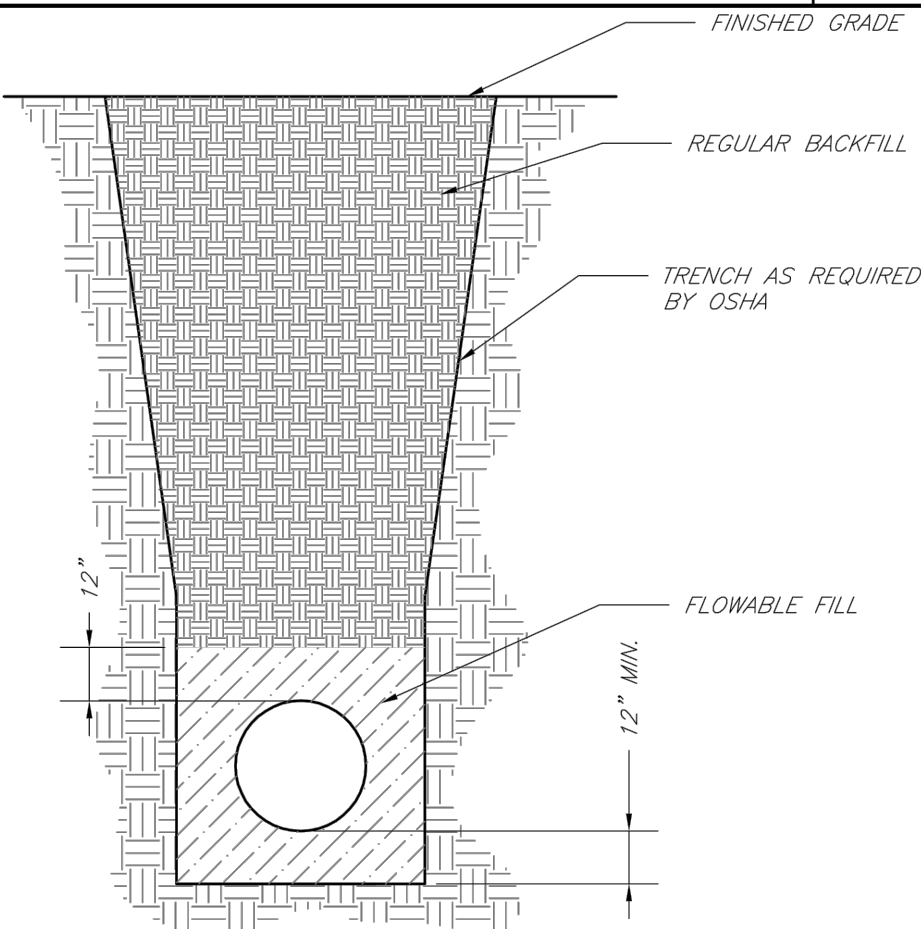
1. WHEN RETAINER GLANDS ARE USED IN LIEU OF MECHANICAL JOINT (MJ) RESTRAINT FITTINGS, HORIZONTAL THRUST BLOCKS ARE REQUIRED.
2. GATE VALVE MAY BE BOLTED DIRECTLY TO MJ RESTRAINT TEE.
3. SEE APPROVED PRODUCTS LIST FOR WATER UTILITIES FOR FIRE HYDRANT, VALVES, VALVE BOX LID, AND COVER.
4. BOTTOM HYDRANT FLANGE SHALL BE 2" TO 6" ABOVE FINISHED GRADE.
5. FOR STREETS WITHOUT CURBS FIRE HYDRANTS SHALL BE PLACED WITHIN 1 FOOT OF THE R/W LINE, BUT NOT MORE THAN 10' FROM EDGE OF PAVEMENT. FIRE HYDRANT SHALL NOT BE PLACED IN BOTTOM OF DITCH.
6. HYDRANT SHALL BE ROTATED AS DIRECTED BY INSPECTOR.



**LEE'S SUMMIT  
MISSOURI**  
PUBLIC WORKS ENGINEERING DIVISION | 220 SE GREEN STREET | LEE'S SUMMIT, MO 64063

**HYDRANT WITH 90 DEGREE BEND**

Date:	02/13
Drawn By:	JN
Checked By:	DL
FILE:	WAT-5
Rev:	1/14
Rev:	



NOT TO SCALE

NOTES:

1. FLOWABLE FILL SHALL MEET THE REQUIREMENTS OF THE CITY OF LEE'S SUMMIT DESIGN AND CONSTRUCTION MANUAL.
2. REGULAR BACKFILL ABOVE THE TRENCH CHECK SHALL BE FREE OF DEBRIS, ORGANIC MATTER, AND STONES > 6" IN ANY DIMENSION.
3. TOP OF FLOWABLE BACKFILL SHALL EXTEND 12" ABOVE THE TOP OF THE PIPE.
4. LENGTH OF TRENCH CHECK SHALL BE A MINIMUM OF 12".



**LEE'S SUMMIT  
MISSOURI**  
PUBLIC WORKS ENGINEERING DIVISION | 220 SE GREEN STREET | LEE'S SUMMIT, MO 64063

**TRENCH CHECK**

Date:	02/13
Drawn By:	JN
Checked By:	DL
FILE:	WAT-6
Rev:	1/14
Rev:	



**LEE'S SUMMIT  
MISSOURI**  
PUBLIC WORKS ENGINEERING DIVISION | 220 SE GREEN STREET | LEE'S SUMMIT, MO 64063

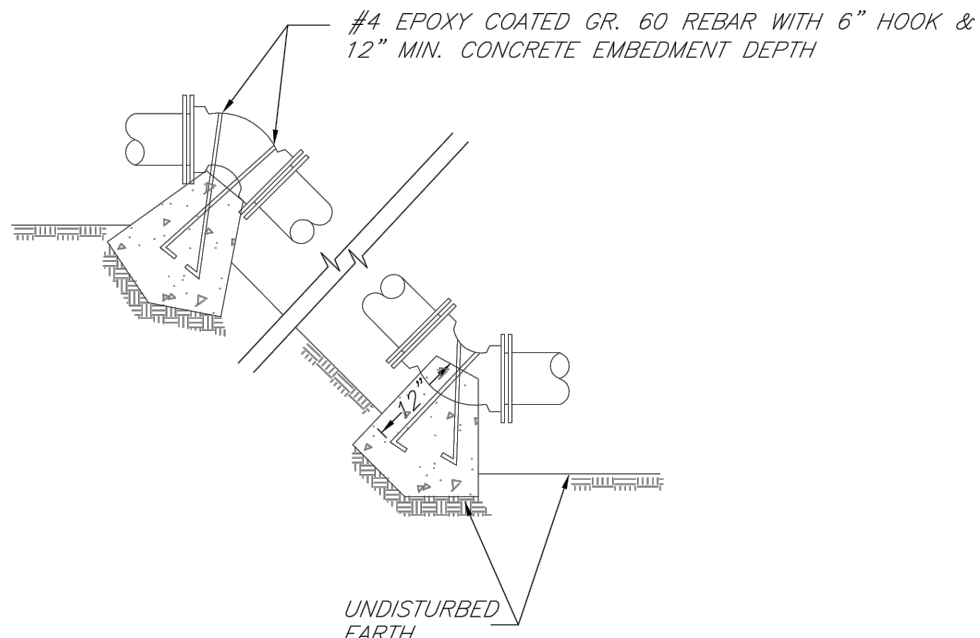
**HYDRANT INSTALLATION - STRAIGHT SET**

**REQUIRED CONCRETE VOLUME (CUBIC FEET - CF)**

NOM. DIA. (INCHES)	180 TEE, PLUG	90 BEND	45 BEND	22.5 BEND	11.25 BEND
6	50.5	71.4	38.6	19.7	9.9
8	89.9	126.9	68.7	35.0	17.6
10	140.2	198.3	107.3	54.7	27.5
12	202.0	282.0	154.6	78.8	39.6
14	278.0	382.0	210.4	107.3	53.9
16	368.0	498.0	278.0	140.1	70.4
18	472.0	630.0	358.0	177.3	89.1
20	590.0	780.0	450.0	225.0	112.5
24	872.0	1170.0	675.0	337.5	168.8

NOTES:

1. ALL BENDS WITHOUT RESTRAINED JOINTS SHALL HAVE CONCRETE THRUST BLOCKS INSTALLED FOR RESTRAINT.
2. MEGA LUGS MAY BE USED ONLY IN CONJUNCTION WITH CONCRETE THRUST BLOCKING.
3. BEARING AREA MUST BE AGAINST UNDISTURBED SOIL.
4. DO NOT COVER JOINTS OR BOLTS (WHERE APPLICABLE) WITH CONCRETE.



**LEE'S SUMMIT  
MISSOURI**  
PUBLIC WORKS ENGINEERING DIVISION | 220 SE GREEN STREET | LEE'S SUMMIT, MO 64063

**VERTICAL THRUST BLOCKS**

Date:	02/13
Drawn By:	JN
Checked By:	DL
FILE:	WAT-2
Rev:	1/14
Rev:	



**LEE'S SUMMIT  
MISSOURI**  
PUBLIC WORKS ENGINEERING DIVISION | 220 SE GREEN STREET | LEE'S SUMMIT, MO 64063

**VALVE STEM EXTENSION AND VALVE BOX**

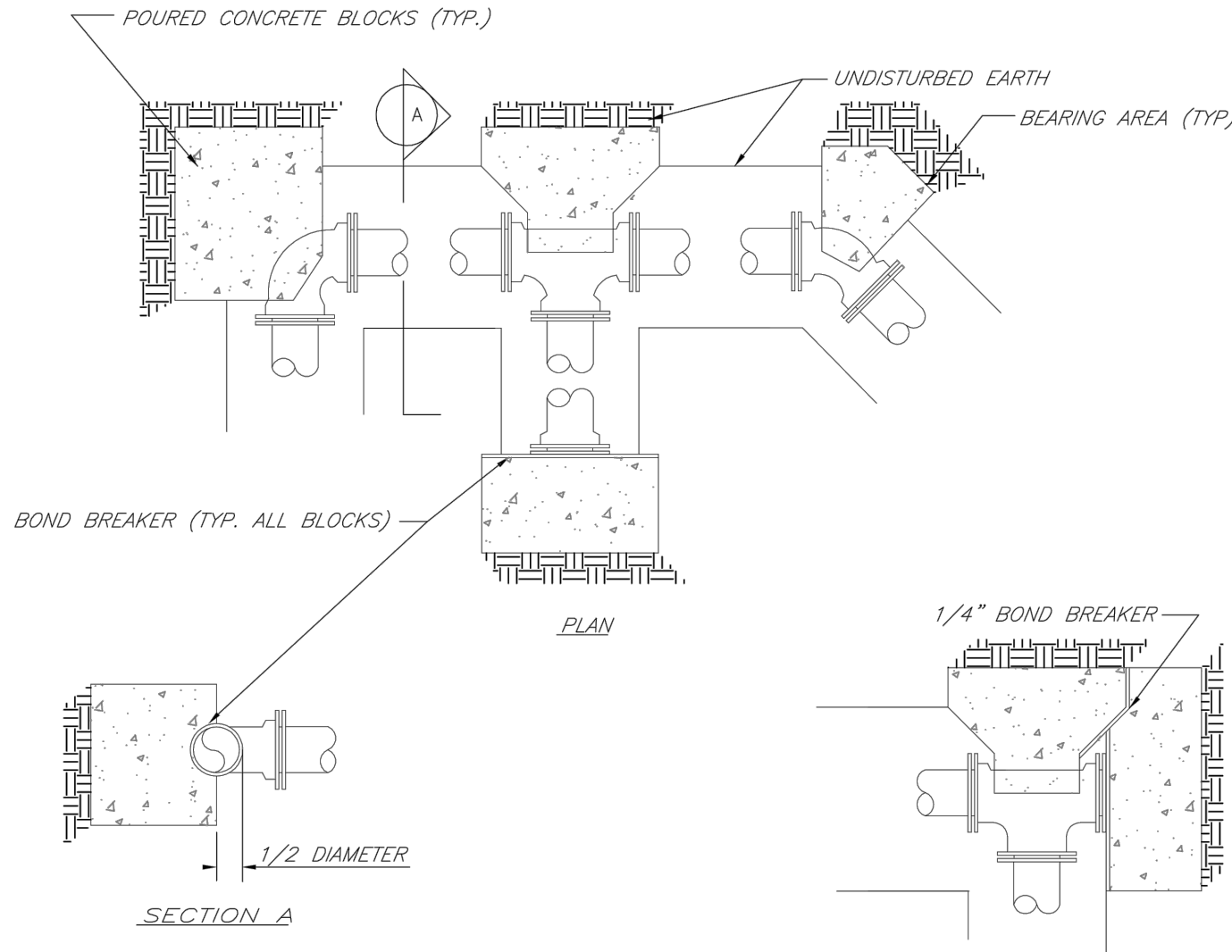
Date:	02/13
Drawn By:	JN
Checked By:	DL
FILE:	WAT-9
Rev:	1/14
Rev:	

**REQUIRED CONCRETE BEARING AREA (SQUARE FEET - SF)**

NOM. DIA. (INCHES)	180 TEE, PLUG	90 BEND	45 BEND	22.5 BEND	11.25 BEND
6	4.7	6.7	4.0	4.0	4.0
8	8.4	11.8	6.4	4.0	4.0
10	13.1	18.5	10.0	5.1	4.0
12	18.8	26.7	14.4	7.4	4.0
14	25.7	36.3	19.6	10.0	5.0
16	33.5	47.4	25.6	13.1	6.6
18	42.4	59.8	32.5	16.5	8.3
20	52.4	73.6	40.1	20.4	10.3
24	78.0	110.0	59.0	29.4	14.8

NOTES:

1. ALL BENDS WITHOUT RESTRAINED JOINTS SHALL HAVE CONCRETE THRUST BLOCKS INSTALLED FOR RESTRAINT.
2. MEGA LUGS MAY BE USED ONLY IN CONJUNCTION WITH CONCRETE THRUST BLOCKING.
3. BEARING AREA MUST BE AGAINST UNDISTURBED SOIL.
4. DO NOT COVER JOINTS OR BOLTS (WHERE APPLICABLE) WITH CONCRETE.



**LEE'S SUMMIT  
MISSOURI**  
PUBLIC WORKS ENGINEERING DIVISION | 220 SE GREEN STREET | LEE'S SUMMIT, MO 64063

**HORIZONTAL THRUST BLOCKS**

Date:	02/13
Drawn By:	JN
Checked By:	DL
FILE:	WAT-1
Rev:	1/14
Rev:	



**McCLURE™**

making lives better.

1700 Swift Street, Suite 100  
North Kansas City, Missouri 64116  
816-756-0444

NOTICE:  
McClure Engineering Company waives any and all responsibility and liability for problems which arise from failure to follow these Plans, Specifications, and the engineering intent they convey, or for problems which arise from failure to obtain and/or follow the engineers guidance with respect to any errors, omissions, inconsistencies, ambiguities, or conflicts which are alleged.

COPYRIGHT:  
Copyright and property rights in these documents are expressly reserved by McClure Engineering Company. No reproductions, changes, or copies in any manner shall be made without obtaining prior written consent from McClure Engineering Company.

SAINT LUKES FLEX FACILITY EXPANSION PRIVATE  
SANITARY SEWER, PRIVATE STORM SEWER &  
PUBLIC WATER MAIN IMPROVEMENTS  
LEE'S SUMMIT, MISSOURI

STANDARD WATER LINE DETAILS



ISSUE DATE

REVISIONS

ENGINEER  
MVE

DESIGNED BY  
KLJ

DRAWN BY  
KLJ

CHECKED BY  
MVE

McCLURE PROJECT No.

190891-000

SHEET NO.

**C402**