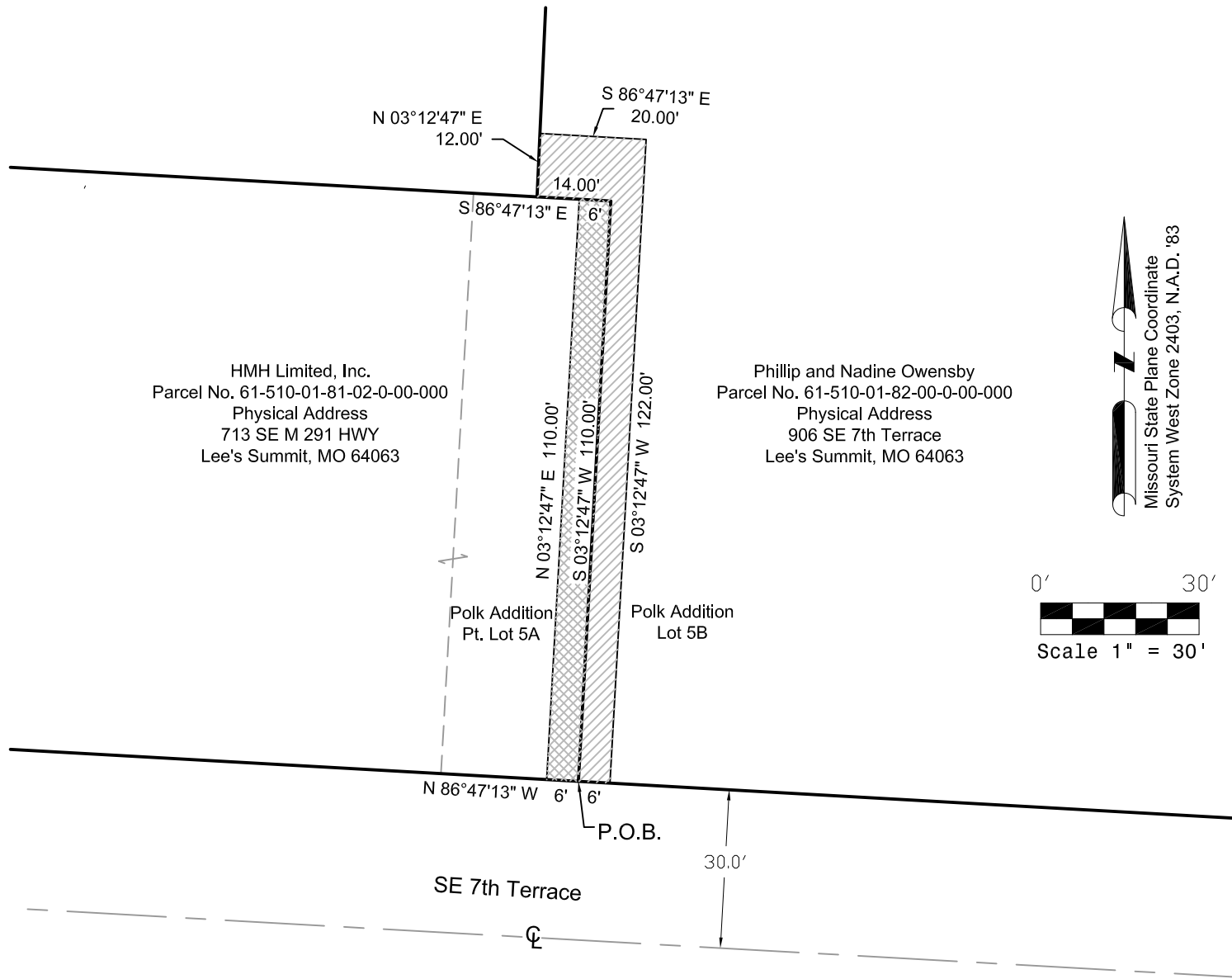


Sanitary Sewer Easement
Part of Lots 5A and 5B, Polk Addition, Lots 5A and 5B

EXHIBIT C



Sanitary Sewer Easement Description

HMH Limited, Inc. Easement:
A part of Lot 5A, Polk Addition, Lots 5A and 5B, Lee's Summit, Jackson County, Missouri, more particularly described as follows:
Beginning at the Southeast corner of said Lot 5A; thence North 86°47'13" West 6.00 feet; thence North 03°12'47" East 110.00 feet; thence South 86°47'13" East 6.00 feet; thence South 03°12'47" West 110.00 feet to the Point of Beginning, containing 660 square feet, more or less.

Phillip and Nadine Owensby Easement:
A part of Lot 5B, Polk Addition, Lots 5A and 5B, Lee's Summit, Jackson County, Missouri, more particularly described as follows:
Beginning at the Southwest corner of said Lot 5B; thence North 03°12'47" East 110.00 feet; thence North 86°47'13" West 14.00 feet; thence North 03°12'47" East 12.00 feet; thence South 86°47'13" East 20.00 feet; thence South 03°12'47" West 122.00 feet; thence North 86°47'13" West 6.00 feet to the Point of Beginning, containing 900 square feet, more or less.

NPC Quality Burgers, Inc.
720 W 20th Street
Pittsburg, KS 66762

Exhibit C
Sanitary Sewer Easement
HMH Limited, Inc.
Phillip and Nadine Owensby

Michael E. Neikirk, P.E.
Civil Engineer
306 N. Market St.
Mt. Carmel, IL 62863
Date: 10.01.2019