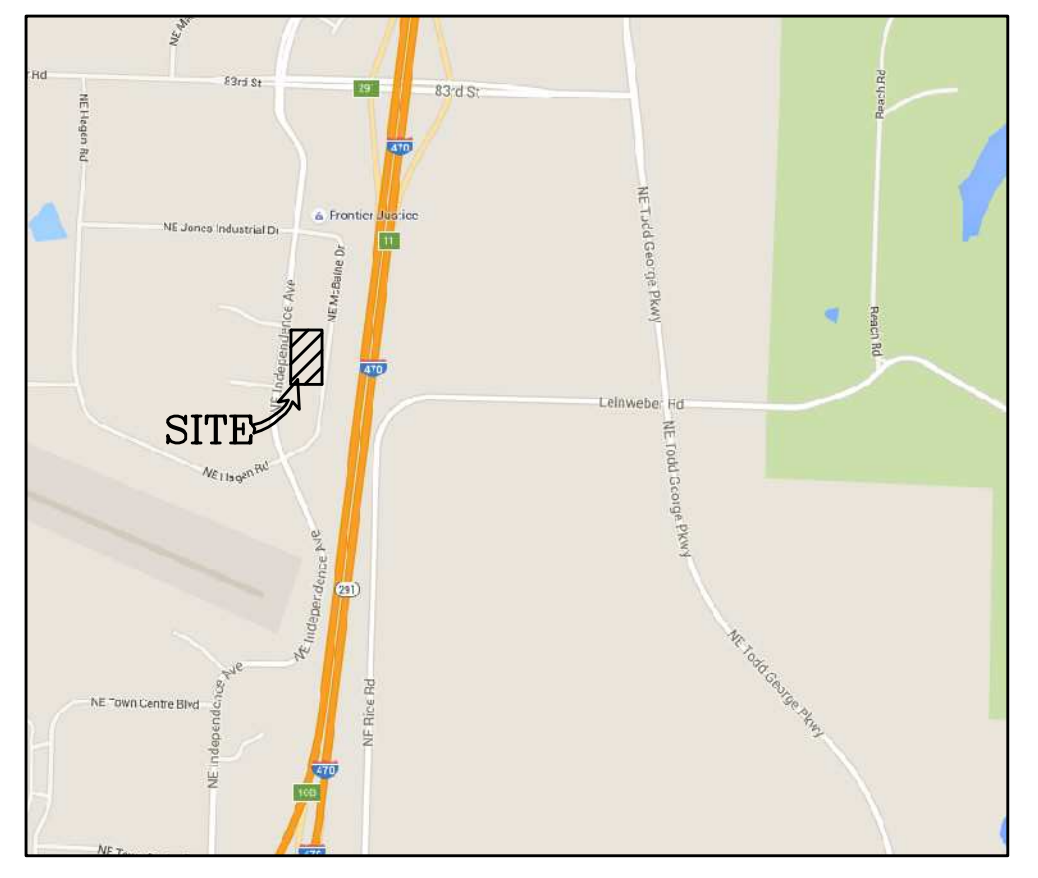


LINE LEGEND

PROPOSED	EXISTING

SYMBOL LEGEND

PROPOSED	EXISTING



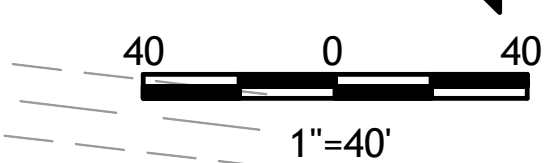
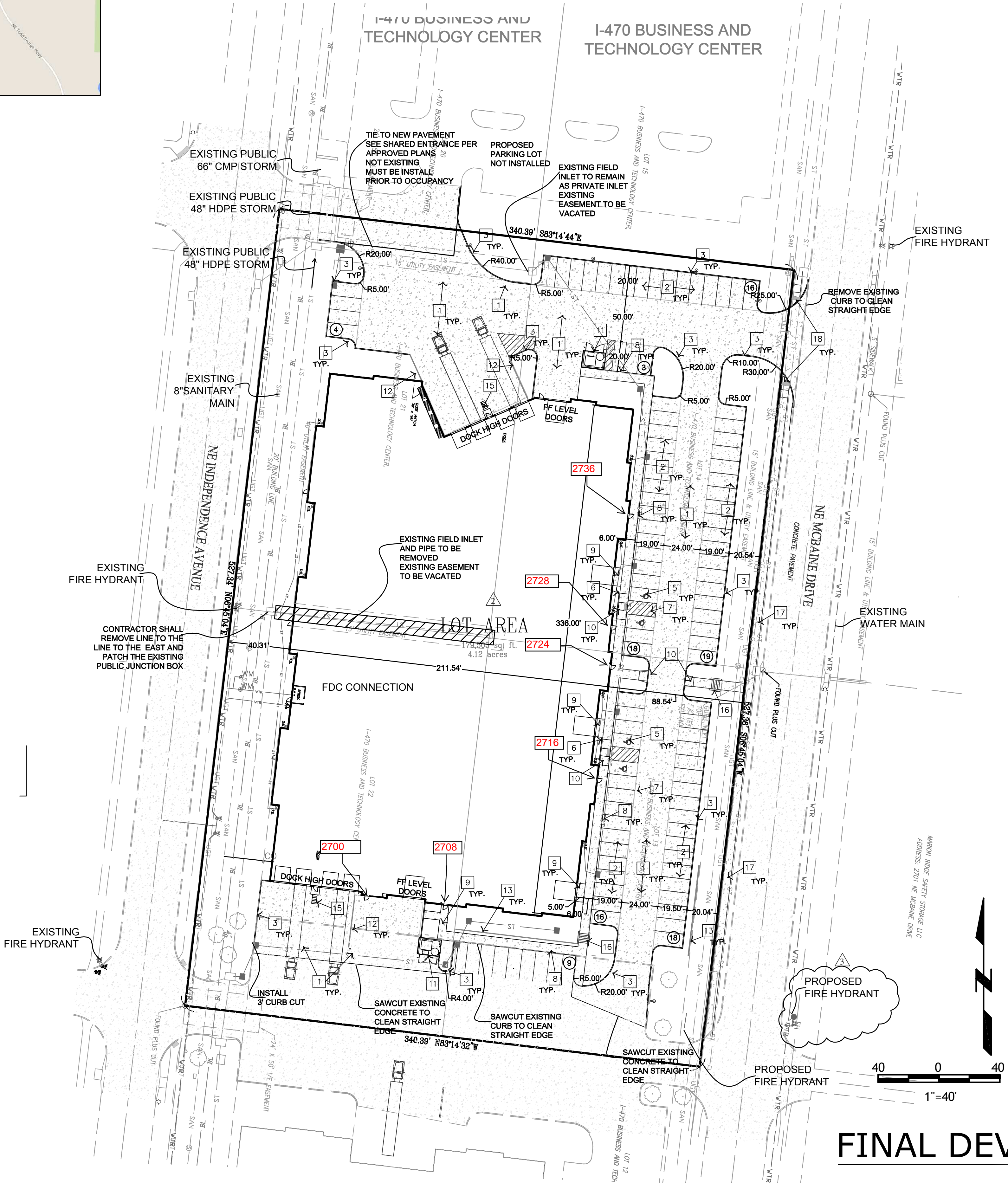
LEGAL DESCRIPTION:
I-470 BUSINESS AND TECHNOLOGY CENTER LOT 13A
A REPLAT OF LOTS 13, 14, 21, & 22 OF I-470 BUSINESS
AND TECHNOLOGY CENTER A SUBDIVISION IN LEE'S
SUMMIT, JACKSON COUNTY, MISSOURI

PLAN NOTES:

- 1 HEAVY CONCRETE PAVEMENT RE: SEE SHEET C210
- 2 LIGHT CONCRETE PAVEMENT RE: SEE SHEET C210
- 3 STRAIGHT BACK CURB RE: SEE SHEET C210
- 4 ACCESSIBILITY RAMP RE:SEE SHEET C210
- 5 PAINT ACCESSIBLE PARKING SYMBOLS ACCORDING TO APWA PAVEMENT MARKING STANDARDS. RE:SEE SHEET C210
- 6 INSTALL ACCESSIBLE PARKING SIGN "TYPE B" RE:SEE SHEET C210
- 7 STRIPE PAVING WITH 4" WIDE STRIPE & PAINT ACCORDING TO APWA PAVEMENT MARKING STANDARDS.
- 8 CURB WALK RE:SEE SHEET C210
- 9 SITE SIDEWALK RE:SEE SHEET C210
- 10 SITE ADA RAMP RE:SEE SHEET C210
- 11 TRASH ENCLOSURE RE: SEE ARCHITECTURAL PLANS
- 12 CONCRETE RETAINING WALL RE:SEE STRUCTURAL PLANS W/ HAND RAIL
- 13 MODULAR RETAINING WALL RE:SEE SHEET C210
- 14 SITE MONUMENT SIGN RE: SEE ARCHITECTURAL PLANS
- 15 METAL DOCK STAIRS RE: SEE ARCHITECTURAL PLANS
- 16 SITE STAIRS RE: SEE ARCHITECTURAL PLANS
- 17 5' CITY SIDEWALK RE: SEE CITY DETAILS
- 18 CITY ADA RAMP RE: SEE CITY DETAILS

GENERAL NOTES:

1. CONTRACTOR SHALL VERIFY LOCATION OF ALL UTILITIES PRIOR TO CONSTRUCTION.
2. PERFORM TEMPORARY EROSION CONTROL MEASURES IN ACCORDANCE WITH ALL STATE & LOCAL REQUIREMENTS. TEMPORARY EROSION CONTROL MEASURES SHALL BE MAINTAINED UNTIL PERMANENT IMPROVEMENTS ARE IN PLACE.
3. ALL PARKING STALLS SHALL BE MARKED W/ A 4" WIDE STRIPE. PARKING STRIPES TO BE PAINTED ACCORDING TO SPECIFICATIONS.
4. CONSTRUCT ALL SIDEWALKS WITH 2% MAX. CROSS SLOPE AWAY FROM BUILDING UNLESS OTHERWISE SHOWN ON PLANS.
5. PLACE EXPANSION JOINTS, IN SIDEWALKS AT 50' MAX. SPACING, AT ALL DIRECTION CHANGES AND WHEN ADJACENT TO BUILDINGS.
6. ALL DIMENSIONS ARE TO BACK OF CURB UNLESS OTHERWISE NOTED.
7. LAYOUT ALL SIDEWALKS AND PAVEMENT APPROX. TO LINES SHOWN. FINAL APPROVAL BY ARCHITECT PRIOR TO COMMENCEMENT



FINAL DEVELOPMENT LAYOUT

PROJECT CONTACTS: ROBERT WALQUIST, P.E.
821 NE COLUMBUS ST
LEE'S SUMMIT, MISSOURI 64063
Phone: (816) 550-5675

**I-470 LOT 13A
LEE'S SUMMIT, JACKSON COUNTY, MISSOURI**

Quist Engineering, Inc
Civil Engineering for Residential &
Commercial Site Development
821 NE Columbus St.
Lee's Summit, Missouri 64063
Phone: (816) 550-5675
email: rwalquist@quistengineering.com

COPYRIGHT © 2019	
1ST ISSUE	6-20-19
REVISIONS	
	7-24-19
	8-7-19
	8-21-19
SHEET NO.	
C200	
JOB NO.	
E18-337	