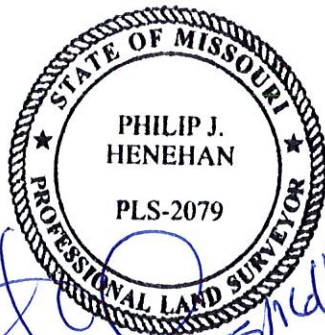


ALL THAT PART OF LOTS 1 AND 2 OF THE MINOR PLAT OF JOHN KNOX RETIREMENT VILLAGE – 14TH PLAT, LOTS 1, 2 AND 3, IN LEE'S SUMMIT, JACKSON COUNTY, MISSOURI, RECORDED AS DOCUMENT NUMBER 2018E0110060 IN BOOK I180 AT PAGE 77, DESCRIBED AS FOLLOWS:
COMMENCING AT THE LOT CORNER COMMON TO SAID LOTS LYING ON THE NORTHEASTERLY RIGHT OF WAY LINE OF NW O'BRIEN ROAD AS ESTABLISHED BY THE PLAT OF JOHN KNOX RETIREMENT VILLAGE – 8TH PLAT, RECORDED IN BOOK 34 AT PAGE 80; THENCE N 54°52'30" E, ALONG THE LOT LINE BETWEEN SAID LOTS, A DISTANCE OF 93.07 FEET; THENCE N 35°07'30" W, A DISTANCE OF 10.00 FEET TO A POINT ON THE NORTHWESTERLY LINE OF A UTILITY EASEMENT RECORDED AS DOCUMENT NUMBER I-00522, IN BOOK I-299 AT PAGE 811 AND THE POINT OF BEGINNING OF THE PART TO BE DESCRIBED HEREIN; THENCE CONTINUING N 35°07'30" W, A DISTANCE OF 88.61 FEET; THENCE N 3°13'16" E, A DISTANCE OF 102.14 FEET; THENCE S 86°47'00" E, A DISTANCE OF 50.85 FEET; THENCE S 65°38'27" E, A DISTANCE OF 17.78 FEET TO A POINT ON THE NORTHERLY LINE OF A 14 FOOT UTILITY EASEMENT ESTABLISHED BY THE PLAT OF JOHN KNOX RETIREMENT VILLAGE, RECORDED IN BOOK 33 AT PAGE 31; THENCE S 24°15'23" W, A DISTANCE OF 15.00 FEET TO A POINT ON THE SOUTHERLY LINE OF LAST SAID EASEMENT; THENCE N 65°38'27" W, A DISTANCE OF 15.01 FEET; THENCE N 86°47'00" W, A DISTANCE OF 33.05 FEET; THENCE S 3°13'16" W, A DISTANCE OF 81.93 FEET; THENCE S 35°07'30" E, A DISTANCE OF 83.39 FEET TO A POINT ON THE NORTHWESTERLY LINE OF FIRST SAID EASEMENT; THENCE S 54°52'30" W, ALONG SAID EASEMENT LINE, A DISTANCE OF 15.00 FEET TO THE POINT OF BEGINNING, CONTAINING 3,546 SQUARE FEET OR 0.08 ACRES, MORE OR LESS.

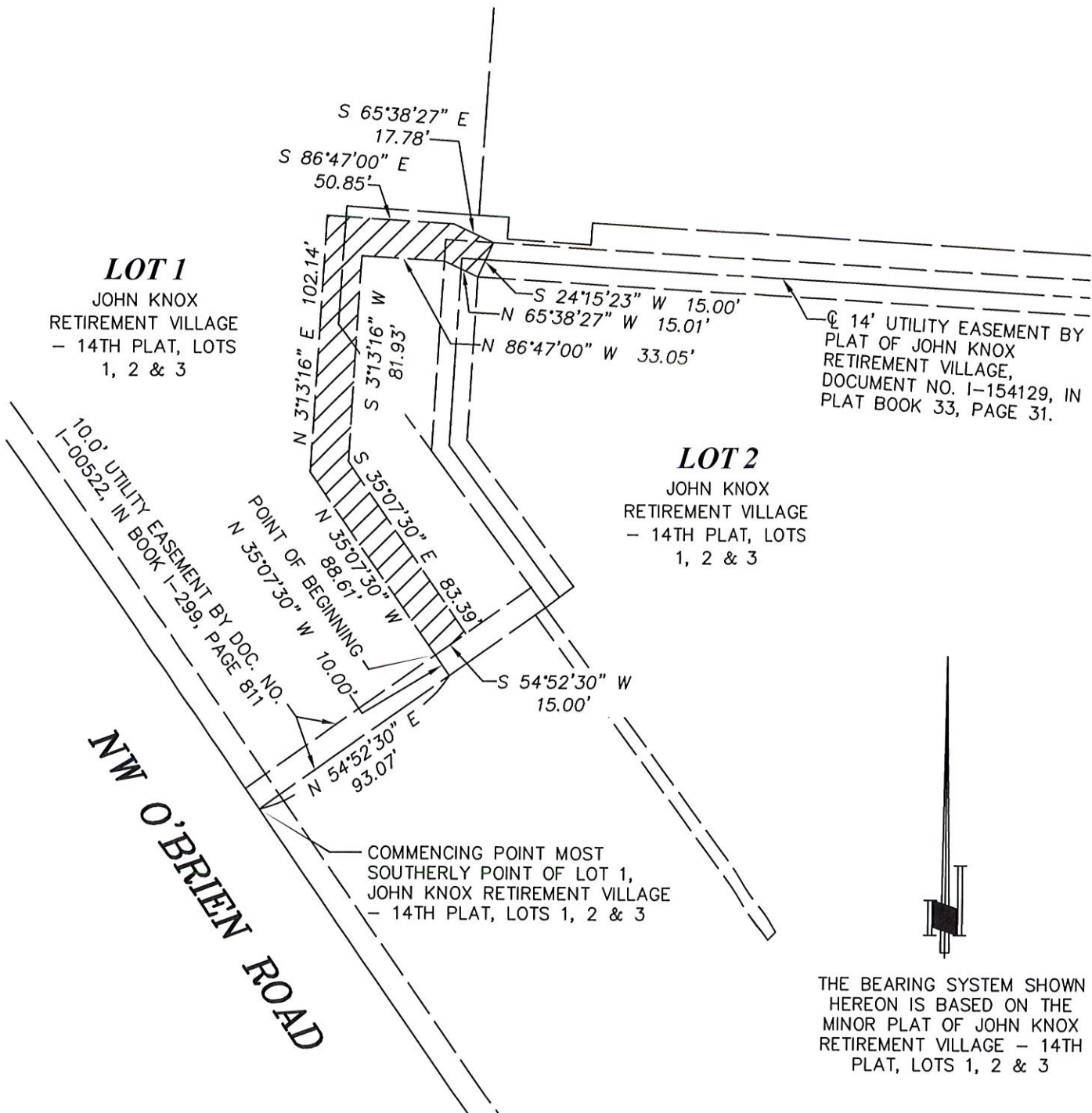


PHILIP J. HENEHAN, PLS #2079
ANDERSON SURVEY COMPANY
1270 N.E. DELTA SCHOOL ROAD
LEE'S SUMMIT, MISSOURI 64064
PHONE: (816)246-5050



LOT 1
JOHN KNOX
RETIREMENT VILLAGE
- 14TH PLAT, LOTS
1, 2 & 3

LOT 2
JOHN KNOX
RETIREMENT VILLAGE
- 14TH PLAT, LOTS
1, 2 & 3



THE BEARING SYSTEM SHOWN
HEREON IS BASED ON THE
MINOR PLAT OF JOHN KNOX
RETIREMENT VILLAGE - 14TH
PLAT, LOTS 1, 2 & 3



EXHIBIT A

FOR: JOHN KNOX VILLAGE
PROJECT: VAL 400
PROPERTY LOCATION: O'BRIEN ROAD
DATE: MAY 16, 2019
MISSOURI STATE CERTIFICATE OF AUTHORITY, 000076

SCALE 1" = 60 FEET
60 30 0 60
SCALE IN FEET

1-47-32
19-05-42110-1
42110 VAL 400 Water Esmt.dwg
Exhibit



PHILIP J. HENEHAN,
PLS #2079