



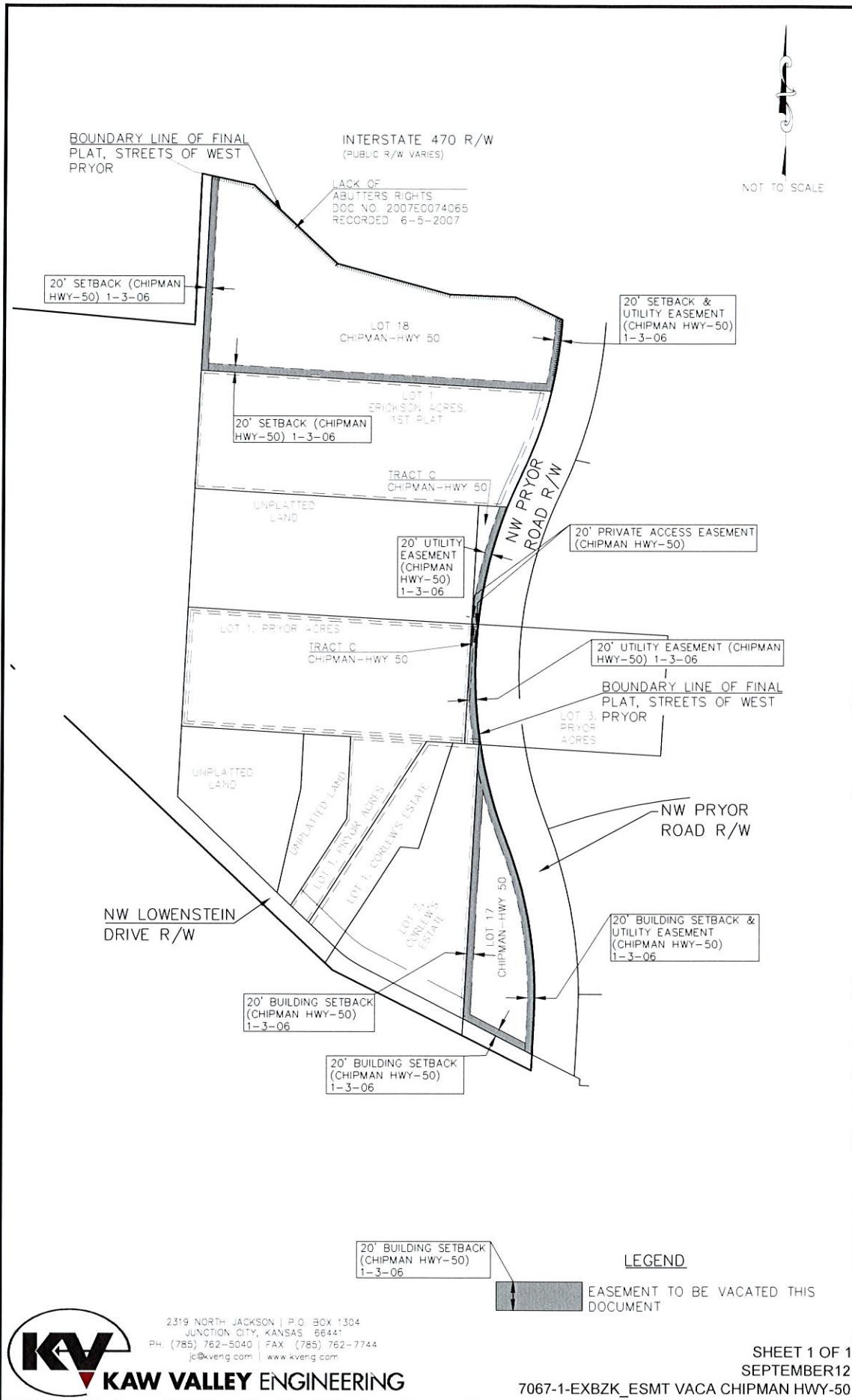
JULY 11, 2019  
A14\_7067-1  
LEE'S SUMMIT, MISSOURI

THAT PORTION OF THE 20 FOOT AND 30 FOOT BUILDING SETBACK AND UTILITY EASEMENT LOCATED ADJOINING THE NORTHERLY RIGHT-OF-WAY LINE OF NW LOWENSTEIN DRIVE IN LOTS 3, 4, 5, 6 AND 7 OF THE FINAL PLAT OF STREETS OF WEST PRYOR, LOTS 1 THRU 14, TRACTS "A", "B", "C" & "D" RECORDED AS DOCUMENT NUMBER 2019E0032538, IN THE CITY OF LEE'S SUMMIT, COUNTY OF JACKSON, STATE OF MISSOURI.

AND

THAT PORTION OF THE 30 FOOT BUILDING SETBACK AND UTILITY EASEMENT LOCATED ADJOINING THE SOUTHERLY RIGHT-OF-WAY LINE OF NW LOWENSTEIN DRIVE IN LOT 1 OF THE FINAL PLAT OF STREETS OF WEST PRYOR, LOTS 1 THRU 14, TRACTS "A", "B", "C" & "D" RECORDED AS DOCUMENT NUMBER 2019E0032538, IN THE CITY OF LEE'S SUMMIT, COUNTY OF JACKSON, STATE OF MISSOURI.

**This description is intended for the vacation of the platted utility easement. Please ensure the vacation document only vacates the utility easement – and retains the building setback.**



2319 NORTH JACKSON | P.O. BOX 1304  
JUNCTION CITY, KANSAS 66441  
PH. (785) 762-5040 | FAX (785) 762-7744  
jc@kveng.com | www.kveng.com

**KAW VALLEY ENGINEERING**

SHEET 1 OF 1  
SEPTEMBER 12  
7067-1-EXBZK\_ESMT VACA CHIPMAN HWY-50

SEPTEMBER 11, 2019  
A14\_7067-1  
LEE'S SUMMIT, MISSOURI

ALL OF THE PLATTED 20 FOOT SETBACK LOCATED ON LOT 17, AND ALL OF THE PLATTED 20 FOOT SETBACK AND PLATTED 20 FOOT UTILITY EASEMENT LOCATED ON LOT 18, AND ALL OF THE PLATTED 20 FOOT SETBACK AND PLATTED 20 FOOT PRIVATE ACCESS EASEMENT LOCATED ON TRACT C, AND ALL OF THE PLATTED 20 FOOT SETBACK AND PLATTED 20 FOOT PRIVATE ACCESS EASEMENT LOCATED ON TRACT D, OF THE FINAL PLAT OF CHIPMAN-HWY 50 RECORDED IN BOOK I68, PAGE 62, A SUBDIVISION IN THE CITY OF LEE'S SUMMIT, COUNTY OF JACKSON, STATE OF MISSOURI.

