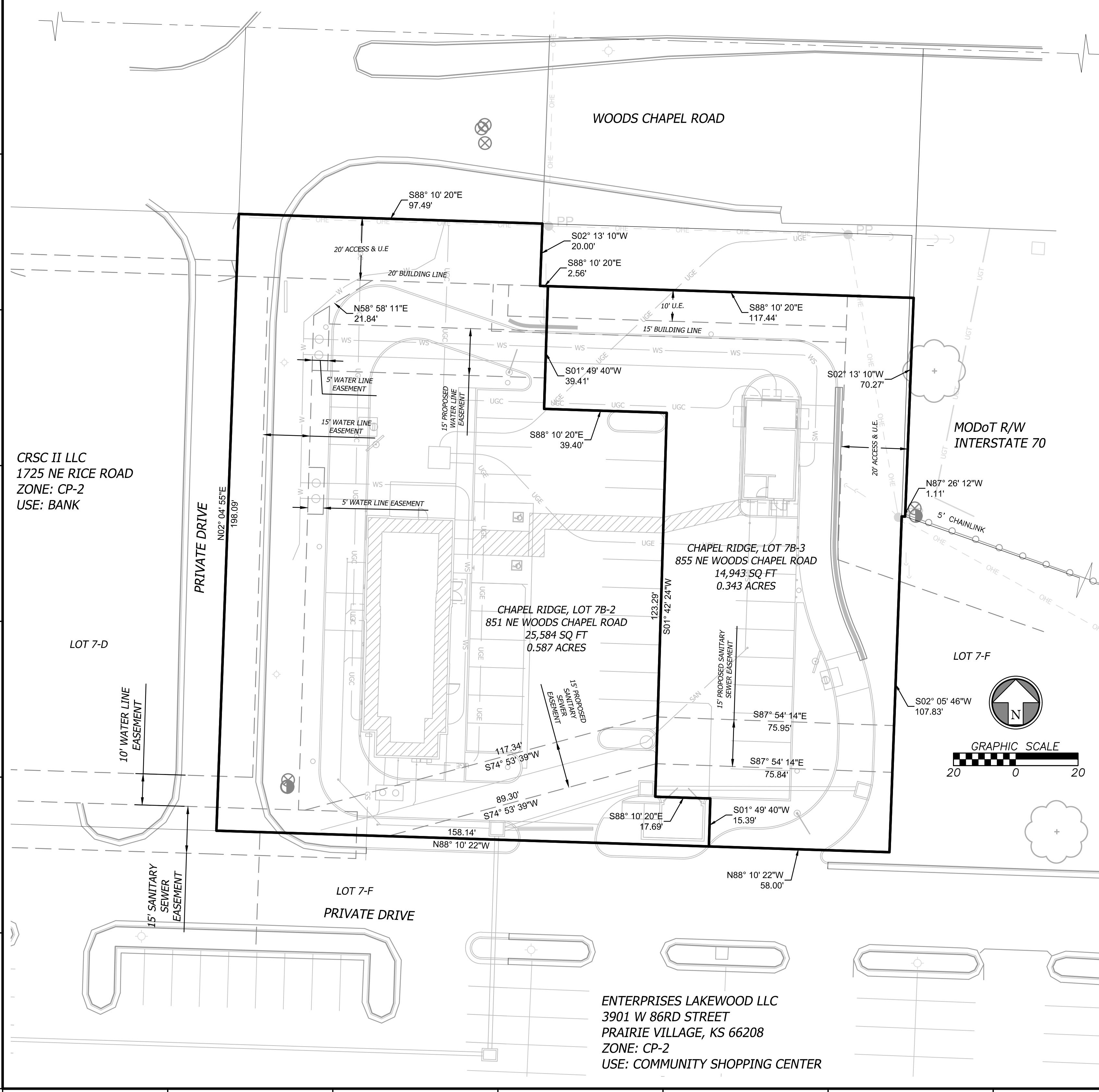
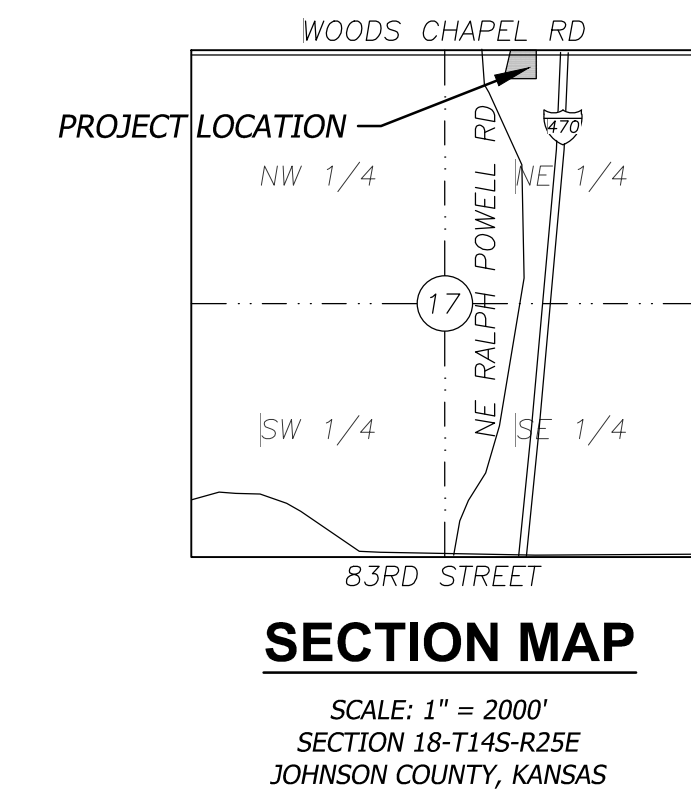


TACO BELL

PRELIMINARY DEVELOPMENT PLAN

851 & 855 NE WOODS CHAPEL ROAD

LOTS 7B-2 & 7B-3, CHAPEL RIDGE, LEE'S SUMMIT, MISSOURI



UTILITY CONTACTS

CITY OF LEE'S SUMMIT, MO

DEVELOPMENT SERVICES
 CITY HALL
 220 SE GREEN STREET
 LEE'S SUMMIT, MO 64063
 TEL: (816) 969-1200
 FAX: (816) 969-1201
 Contact: Mike Wisenborn

WATER UTILITIES
 CITY HALL
 1200 SE HAMBLIN RD
 LEE'S SUMMIT, MO 64063
 TEL: (816) 969-1900
 FAX: (816) 969-1935

PUBLIC WORKS
 CITY HALL
 220 SE GREEN STREET
 LEE'S SUMMIT, MO 64063
 TEL: (816) 969-1800
 FAX: (816) 969-1809

ELECTRIC COMPANY
 KANSAS CITY POWER & LIGHT
 TEL: (888) 471-5275
 Contact: Nathan Michael

LEE'S SUMMIT FIRE DEPARTMENT
 207 SE DOUGLAS ROAD
 LEE'S SUMMIT, MO 64063
 TEL: (816) 969-1300

GAS COMPANY
 SPIRE ENERGY
 TEL: (816) 756-5252
 Contact: Bobbie Saulsberry

TELEPHONE COMPANY
 AT&T
 TEL: (800) 464-7928

BENCHMARKS

MILITARY GRID REFERENCE SYSTEM (MGRS) BENCHMARK
 BENCHMARK NUMBER: JA-134
 ELEVATION= 969.81
 DATUM: NAVD88

OIL AND GAS NOTE

BASED ON REVIEW OF THE PLAT, ALTA SURVEY'S PERFORMED, AND FIELD OBSERVATION THERE ARE NOT OIL OR GAS WELLS PRESENT ON THE PROPERTY.

APPROVED BY:

Administrator, Engineering Services Division Date

SUBMITTED BY:

BHC RHODES
 OVERLAND PARK, KANSAS

Mark S. Sherfy, P.E. Date
 MO PE-2017010253

DEVELOPER

FIRST STREET DEVELOPMENT
 2929 E CAMELBACK ROAD, SUITE 116
 PHOENIX, AZ 85016
 PH: (602) 714-3099
 CONTACT: CHRIS CZYZ

CIVIL ENGINEER

BHC RHODES
 7101 COLLEGE BOULEVARD, SUITE 400
 OVERLAND PARK, KANSAS 66210
 P (913) 663-1900
 F (913) 663-1633
 CONTACT: MARK SHERFY, P.E.
 EMAIL: MARK.SHERFY@BHC.COM



MARK S SHERFY
 MO# PE-2017010253

BHC RHODES
 Civil Engineering • Surveying • Utilities
 7101 College Blvd., Suite 400
 Overland Park, Kansas 66210
 P: (913) 663-1900 F: (913) 663-1633
 BHC is a trademark of Flannery Homestead & Company, P.A.
 Certificate of Authority Number: MO# E-1355-F

Prepared For:
 FIRST STREET DEVELOPMENT
 4455 E CAMELBACK ROAD
 BUILDING C #241
 PHOENIX, ARIZONA 85018
 602-714-3099

TACO BELL
 851 NE WOODS CHAPEL
 LEE'S SUMMIT, MISSOURI
 PRELIMINARY DEVELOPMENT PLAN
 SITE LAYOUT

Design: MGG Drawn: MGG
 Checked: MSS
 Issue Date: 12/04/19
 Project Number: 026040.08

Dec 04, 2019 - 4:07pm Plotted By: motlightbs V:\2020\04-First Street Development - Master\2020\04-08-Woods Chapel\04-DWG\Eng-Chapel\04-DWG\Eng-Chapel-LOT 5PLOT.dwg Layout: PDP