

**L1** DIMENSION PLAN  
1/4" = 1'-0"

## SHEET NOTES

- DIMENSIONS ARE FROM THE FACE OF STUD TO FACE OF STUD, (UNLESS NOTED OTHERWISE)
- PROVIDE 3/4" HIGH CONCRETE FOR MILLWORK CURBS BY THE GENERAL CONTRACTOR (RE: SHOP DRAWINGS FOR EXACT LOCATIONS & DIMENSIONS)
- ALL BLOCKING SHALL BE THE GENERAL CONTRACTORS RESPONSIBILITY. BLOCKING SHALL INCLUDE, BUT IS NOT LIMITED TO, THE AREAS INDICATED ON: THE INTERIOR ELEVATIONS FOR SHELVING, BRACKETS, GROUNDS, FIXTURES, ETC., THE BUILDING SECTIONS AND DETAILS FOR BLOCKING AT WINDOWS, CANOPIES, ROOF FRAMING, ETC.
- ALL FASTENERS, ANCHORS, CLIPS, STRAPS & ETC. WHICH ARE IN CONTACT WITH COPPER BASED TREATED WOOD AND ARE LESS THAN 3/8" THICK SHALL BE G185 COATED GALVANIZED, STAINLESS STEEL OR AN APPROVED EQUAL.
- NON-COMBUSTIBLE CONSTRUCTION SHALL CONSIST OF 6" OR 8" WOOD STUDS (COORDINATE W/ STRUCTURAL) W/ 5/8" DURAROCK ON INTERIOR SIDE FOR FIRE RATING. EXTERIOR SHEATHING SHALL BE 1/2" DOW THERMAX SHEATHING OR EQUAL. 1 1/2" OR MIN. R-7.5 NON-COMBUSTIBLE BLOCKING AND CONSTRUCTION SHALL BE USED WITHIN 18", BEHIND & UNDER ALL HOODS.
- PROVIDE 6" KRAFT FACED FIBERGLASS (R-19) BATT INSULATION WITH FLAME SPREAD INDEX OF NOT MORE THAN 25 AND SMOKE-DEVELOPED INDEX OF NOT MORE THAN 450 AT ALL EXTERIOR WALLS UP TO ROOF DECK. AT HOOD LOCATIONS ONLY, FOIL FACED SHALL BE USED IN LIEU OF KRAFT FACED. INSULATION SHALL BE INSTALLED ON WARM SIDE OF WALL TYP.
- REFER TO CIVIL DRAWINGS FOR LOCATIONS OF WALKS, BOLLARDS, LANDSCAPING AREAS, FLAG POLE, ETC.
- REFER TO FLOOR FINISH PLAN FOR LOCATIONS AND TYPES OF CORNER GUARDS.
- PROVIDE 3 1/2" SOUND ATTENUATION WITH FLAME SPREAD INDEX OF NOT MORE THAN 25 AND SMOKE-DEVELOPED INDEX OF NOT MORE THAN 450 IN RESTROOM PERIMETER AND RESTROOM VESTIBULE WALLS. UNLESS NOTED OTHERWISE.
- VENDOR TO COORDINATE LOCATION OF POLE MOUNTED EXTERIOR SECURITY CAMERA AND INSTALL UNDERGROUND CONDUIT AS REQUIRED. RE: ELECTRICAL.
- AT SHEAR WALL LOCATIONS ONLY, USE 5/8" DURAROCK ON INTERIOR FACE OF STUD & FIRE RETARDANT TREATED SHEATHING ON EXTERIOR FACE OF WALL. RE: STRUCTURAL.
- SECURE SAFE USING (4) HILTI-HAS-E 1/2" X 4 1/2" ANCHOR BOLTS W/ HILTI HV/ADHESIVE CAPSULE AT EACH HOLE. FASTEN THRU PHENOLIC BASE OF CABINET AND INTO CONCRETE CURB BELOW. VERIFY LOCATION W/ SAFE MANUFACTURER. G.C. TO COORDINATE W/ EQUIPMENT INSTALLER.
- WALLS GOING TO THE ROOF DECK SHALL BE FASTENED AND ANCHORED TO TOP CHORD OF TRUSSES. PENETRATIONS INTO ROOF DECK ARE NOT ALLOWED.
- ALL SUSPENDED CEILING FRAMING TO BE FRAMED FROM/ ANCHORED TO TOP CHORD OF TRUSSES. PENETRATIONS INTO THE ROOF DECK ARE NOT ALLOWED.
- WALLS BEHIND WALK-IN (COOLER/FREEZER) UNITS SHALL BE FINISHED. PROVIDE CEMENT BOARD FOR FIRST 12" ABOVE SLAB THEN PROVIDE GYPSUM BOARD TO 6" ABOVE FINISH CEILING.
- REFERENCE WALL&PARTITION ASSEMBLIES SHEET FOR INFORMATION.

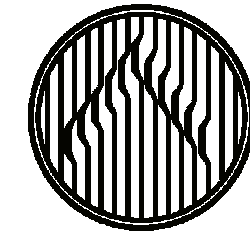
## KEYNOTES

#	NOTE
---	------

## LEGEND

	NEW PARTITION
	RATED PARTITION
	LOW PARTITION - SEE ELEVATION FOR HEIGHT
	EXISTING DOOR TO REMAIN
	EXISTING DOOR RELOCATED
	NEW CONSTRUCTION DOOR

**Oculus Inc.**  
CONNECT • SHAPE • MOVE



**Lion's Choice**  
Famous Roast Beef Sandwiches

LIONS CHOICE - LEE'S SUMMIT

SUMMIT ORCHARDS DEVELOPMENT  
LOT 4

#	Description	Date
---	-------------	------

These drawings/specifications are the property of Oculus Inc. They are furnished as contract documents only. The walls and separately apply only to the document to which they are affixed, and expressly disclaim any responsibility for all other plans, specifications, estimates, reports or other documents or instruments relating to or intended to be used for any part or parts of the architectural or engineering project. Additionally these drawings and details shall in no way convey or imply any type of warranty or certification relating to the performance of products and materials beyond those provided by their respective manufacturer.  
© 2019 Oculus Inc.

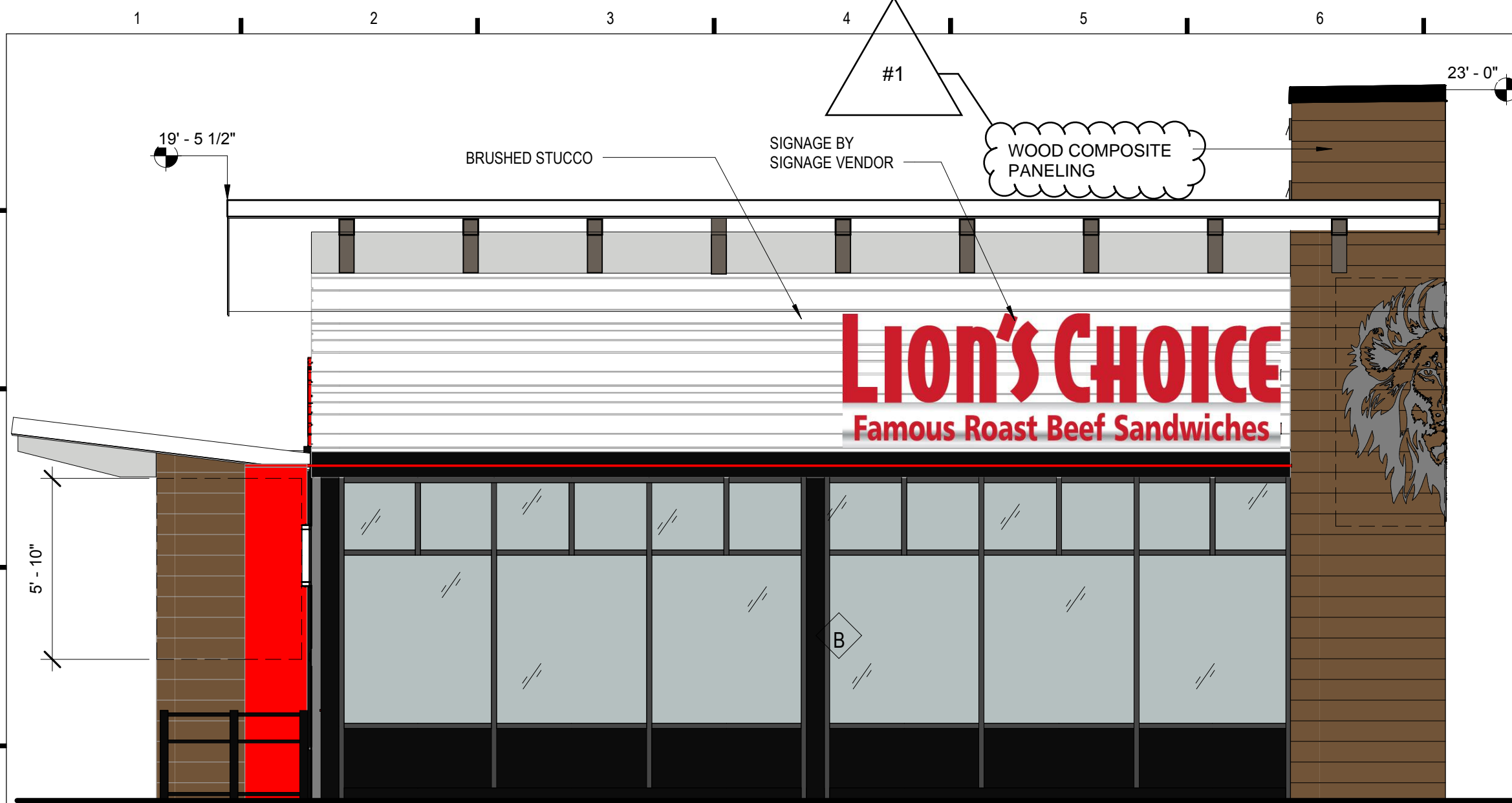
Missouri Corporate Authority Number #814  
Missouri Architect in responsible Charge - Ronald Nelson Rdm AR-5489

**FINAL  
DEVELOPMENT  
PLAN**

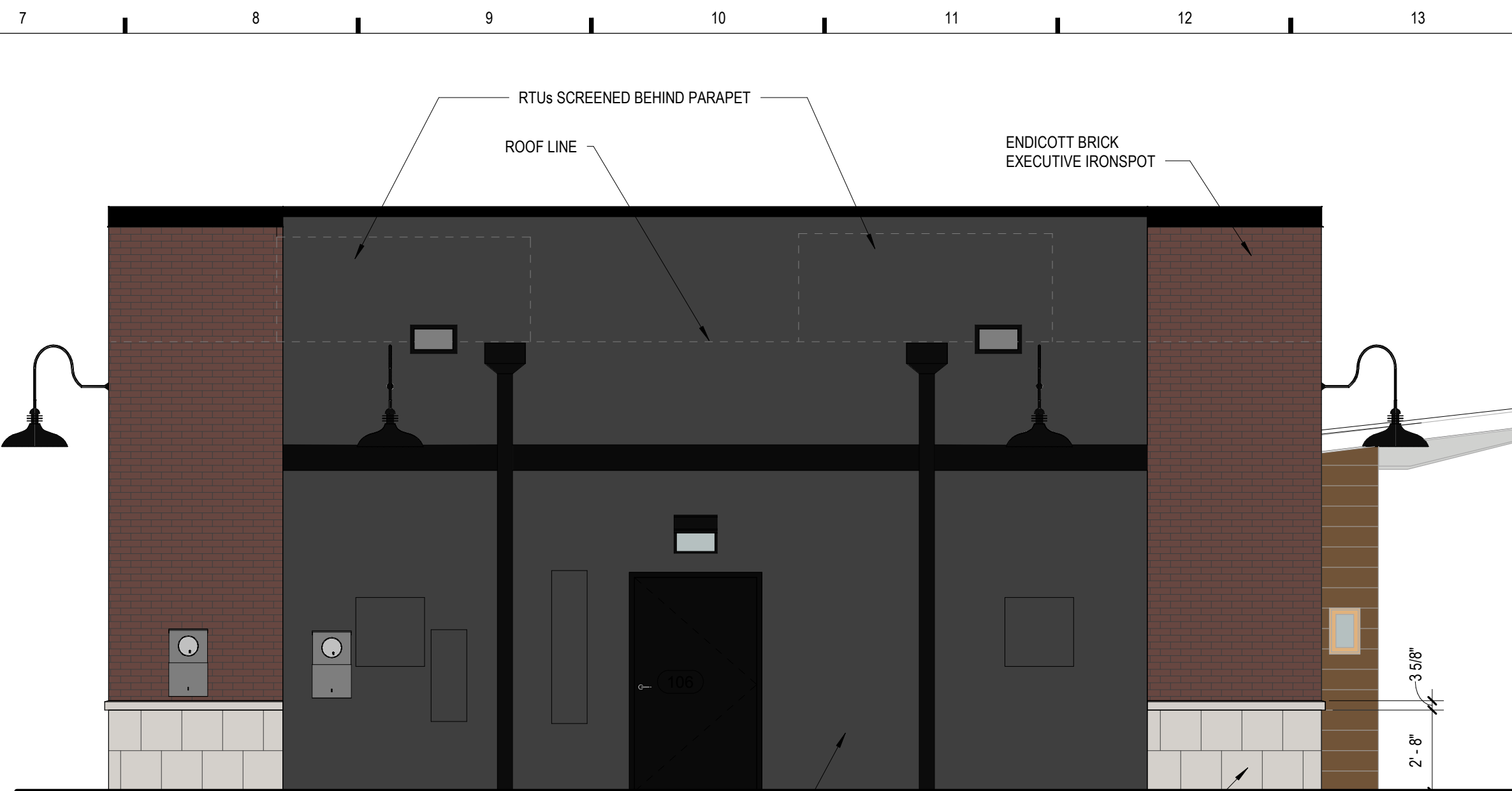
**DIMENSION PLAN**

Project #	52119-M002
Issue Date	8/27/2019
Scale	As indicated
Drawn by	ZTM
Checked by	JMB

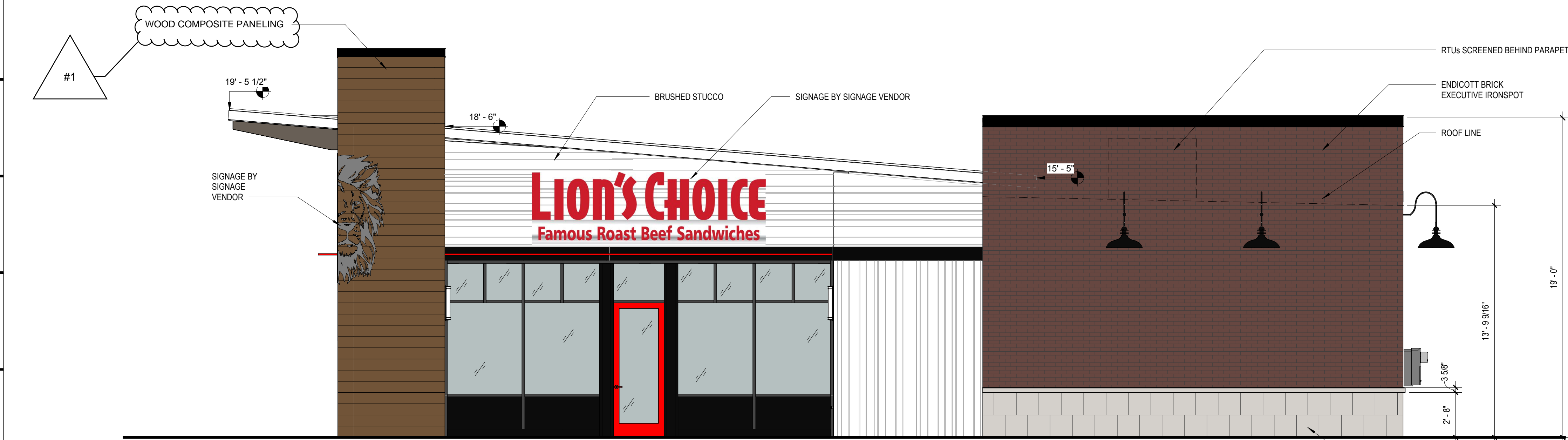
**A1.0**



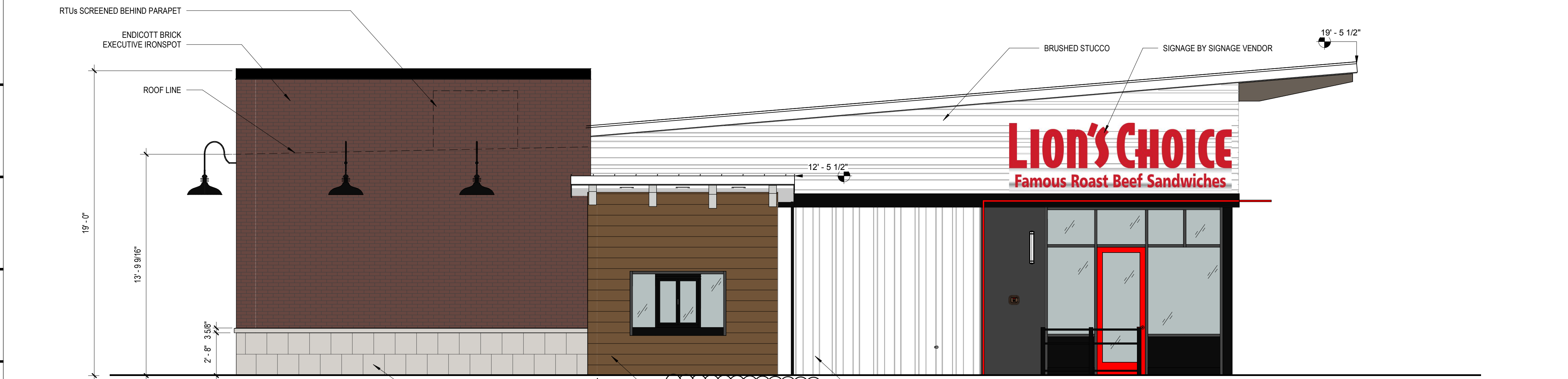
E1 ELEVATION - FRONT  
1/4" = 1'-0"



E8 ELEVATION - REAR  
1/4" = 1'-0"



L1 ELEVATION - MAIN ENTRY  
1/4" = 1'-0"



S1 ELEVATION - DRIVE THROUGH  
1/4" = 1'-0"

## SHEET NOTES

1. CONTRACTOR TO COORDINATE REQUIRED INSTALLATION OF ALL BLOCKING FOR (NOT LIMITED TO) ALL FIXTURES, EQUIP, OR SIGNAGE.
2. ALL SIGNAGE AND SIGNAGE PERMITTING BY SIGNAGE VENDOR.

## KEYNOTES

#	NOTE
---	------



LIONS CHOICE - LEE'S SUMMIT

SUMMIT ORCHARDS DEVELOPMENT  
LOT 4

#	Description	Date
#1	FDP Revision	10/18/2019

These drawings/specifications are the property of Oculus Inc. They are furnished as contract documents only. The reader and signatory apply only to the document to which they are affixed, and expressly disclaim any responsibility for all other plans, specifications, estimates, reports or other documents or instruments relating to or intended to be used for any part or parts of the architectural or engineering project. Additionally, these drawings and details shall in no way convey or imply any type of warranty or certification relating to the performance of products and materials beyond those provided by their respective manufacturer.  
© 2019 Oculus Inc.  
Missouri Corporate Authority Number #314  
Missouri Architect in responsible Charge - Ronald Nelson Rdm AR-5489

FINAL  
DEVELOPMENT  
PLAN

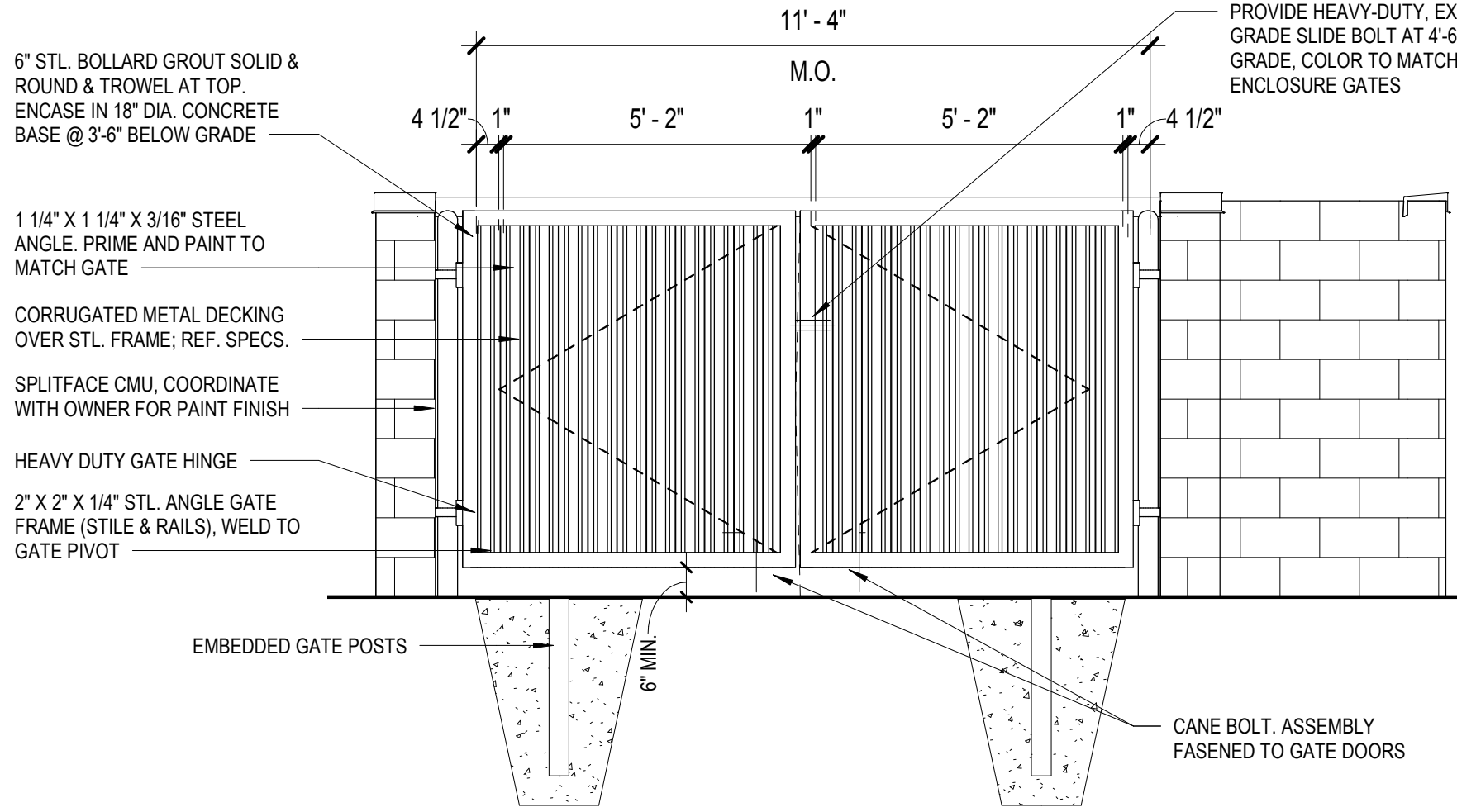
EXTERIOR  
ELEVATIONS

Project #	52119-M002
Issue Date	10/18/2019
Scale	1/4" = 1'-0"
Drawn by	ZTM
Checked by	JMB

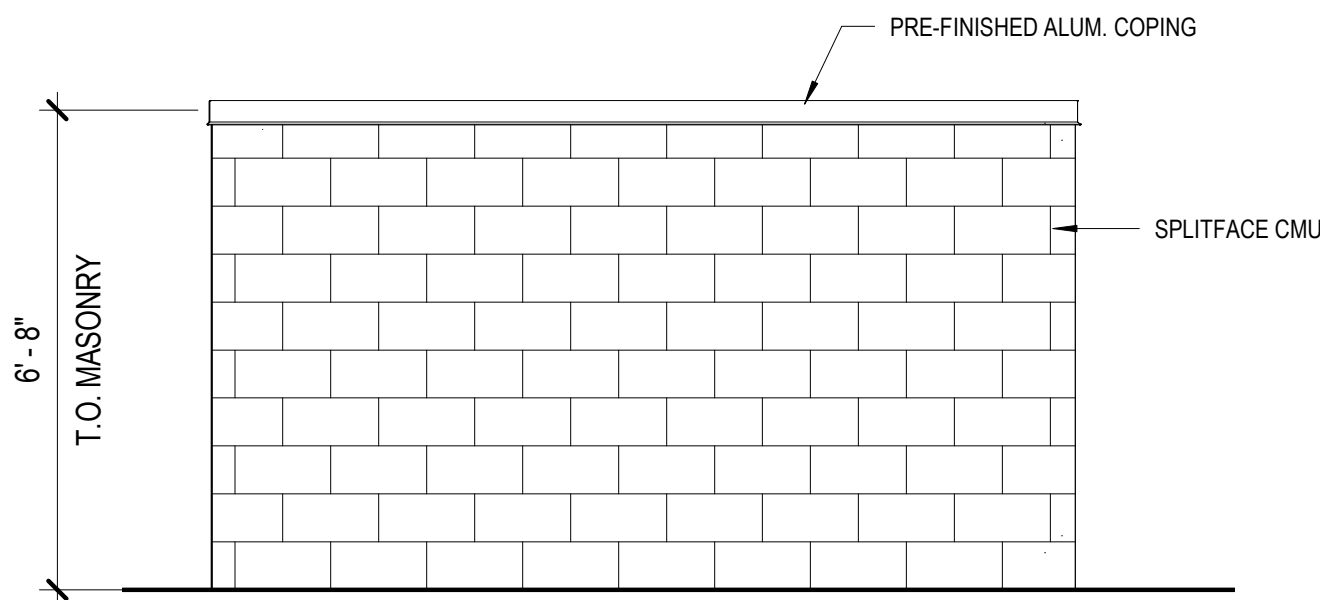
A2.0



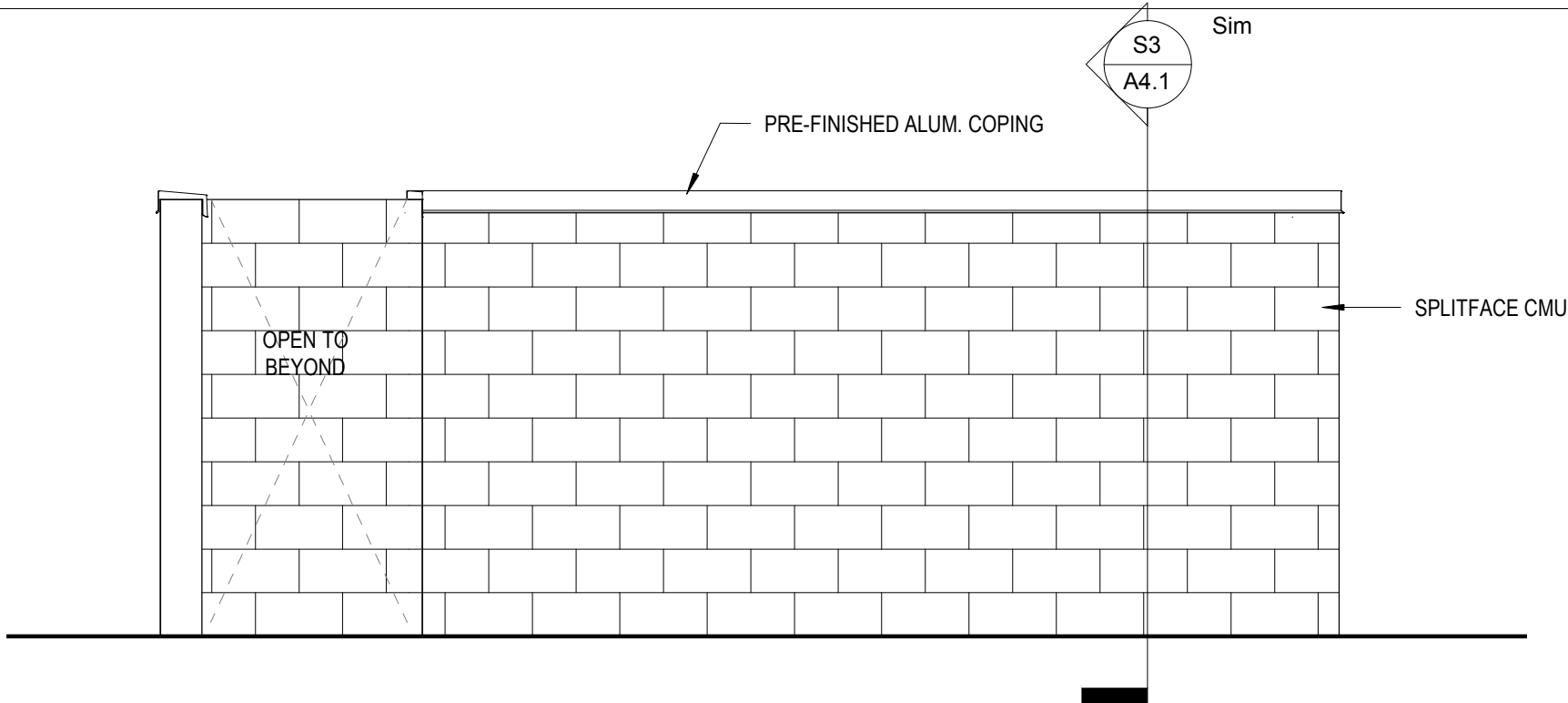
8/27/2019 1:44:02 AM LIONS CHOICE - LEE'S SUMMIT



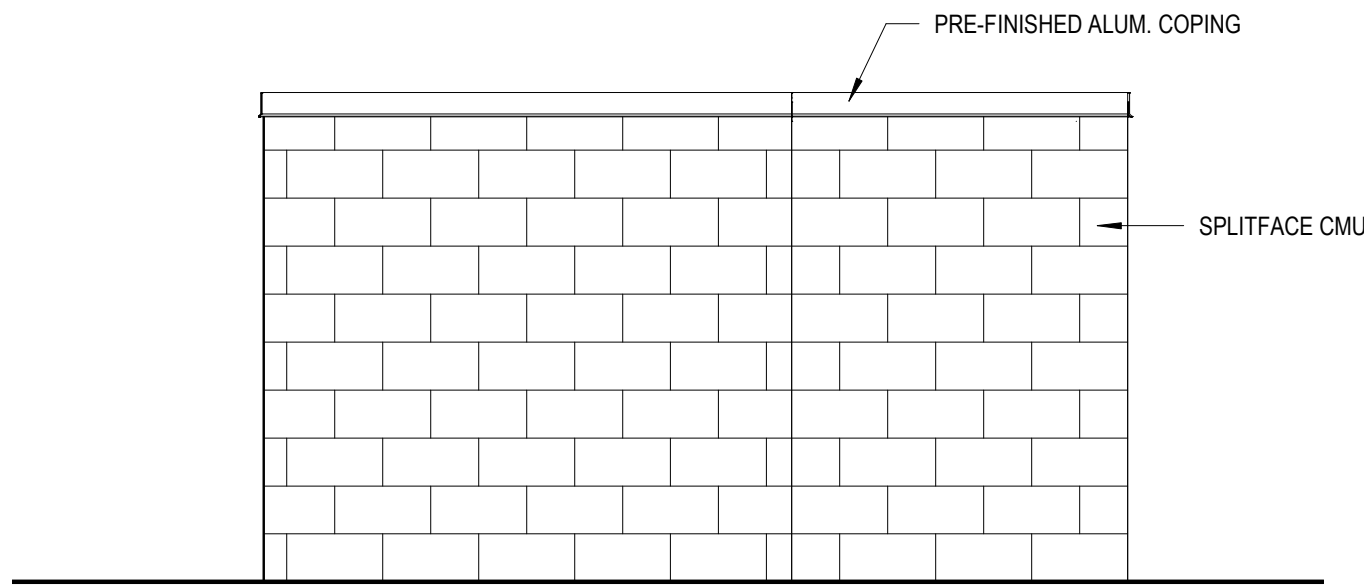
E1 CMU TRASH ENCLOSURE ELEVATION  
3/8" = 1'-0"



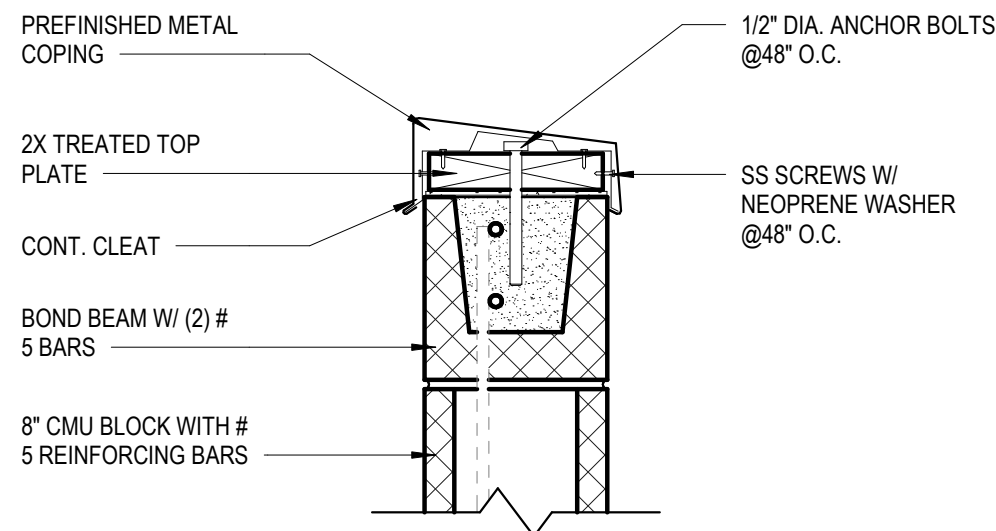
E7 CMU TRASH ENCLOSURE ELEVATION  
3/8" = 1'-0"



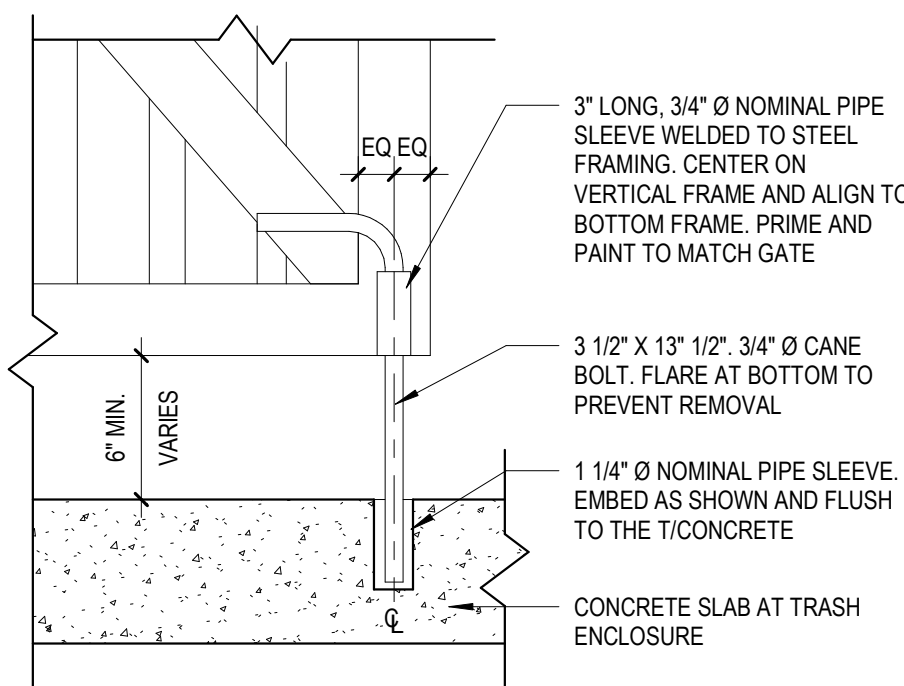
J1 CMU TRASH ENCLOSURE ELEVATION  
3/8" = 1'-0"



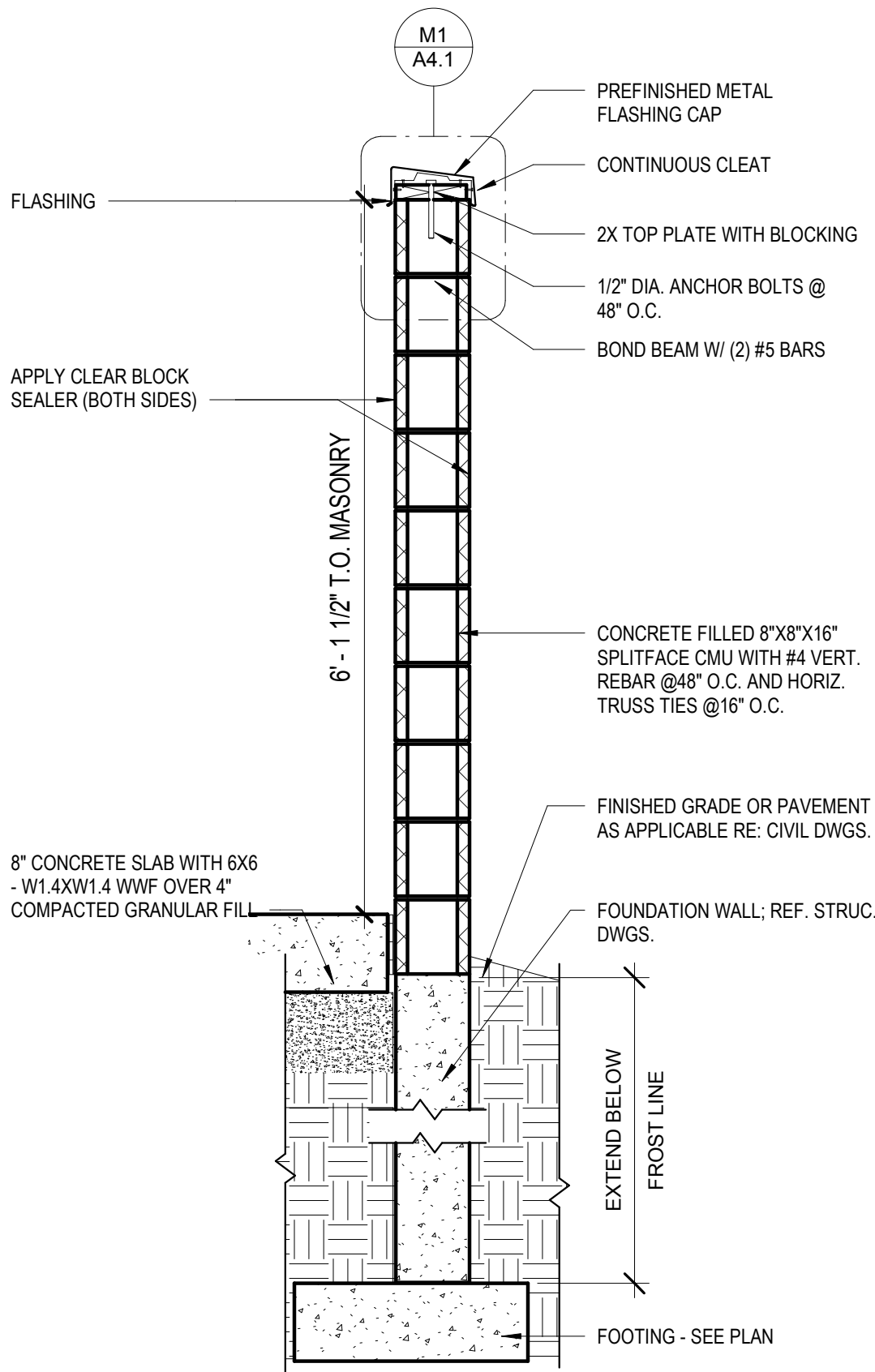
J7 CMU TRASH ENCLOSURE ELEVATION  
3/8" = 1'-0"



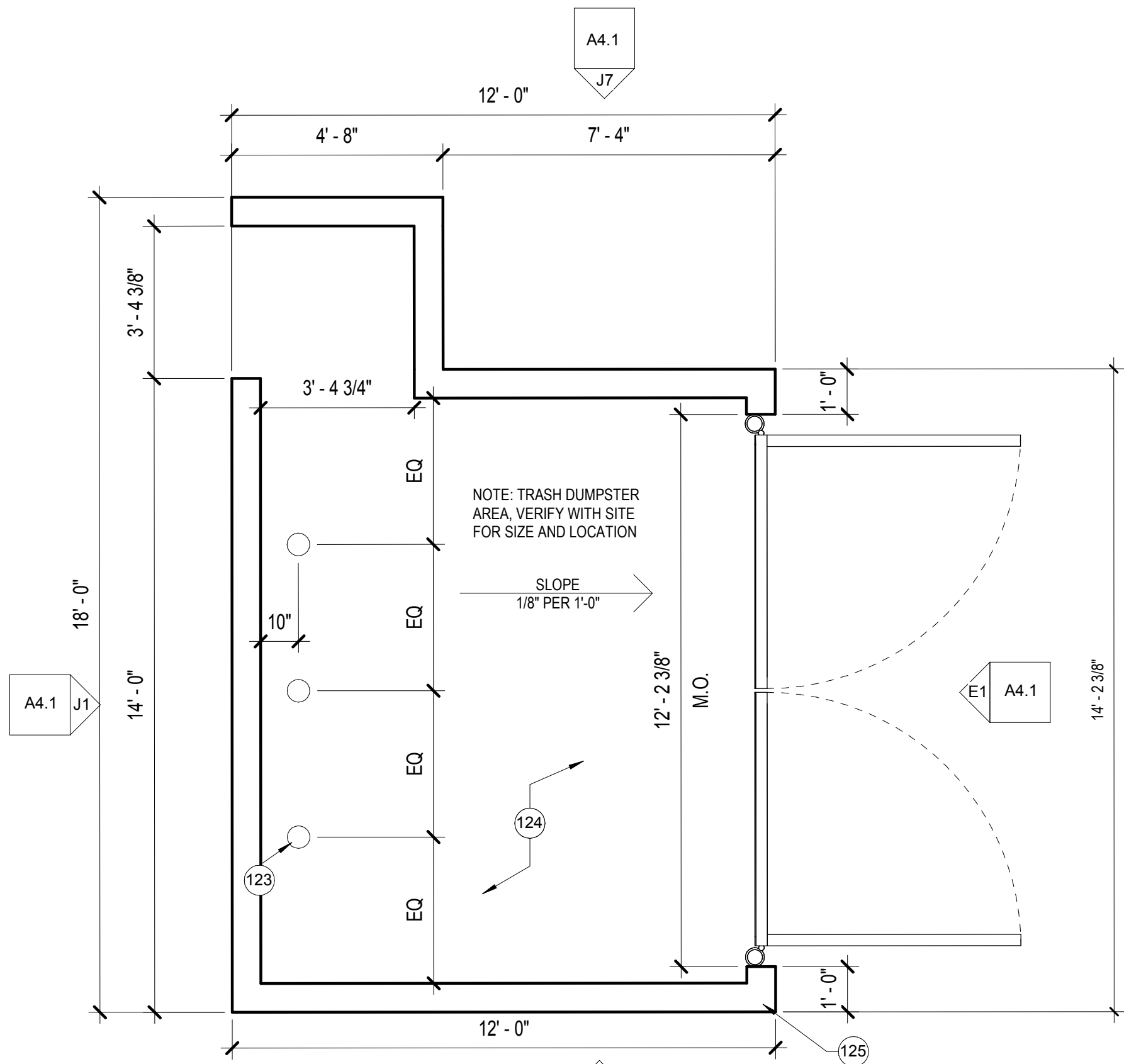
M1 TRASH ENCLOSURE CAP DETAIL  
1 1/2" = 1'-0"



S1 CANE BOLT DETAIL  
1 1/2" = 1'-0"



S3 CMU TRASH ENCLOSURE SECTION  
3/4" = 1'-0"



S7 CMU TRASH ENCLOSURE PLAN  
3/8" = 1'-0"

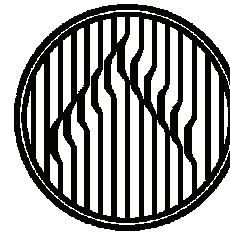
## SHEET NOTES

A. REFERENCE STRUCTURAL DRAWINGS FOR MORE INFORMATION.

## KEYNOTES

#	NOTE
123	6" STEEL BOLLARD 60"H. GROUT SOLID WITH ROUND TROWEL AT TOP. ENCASE IN 18" DIAMETER CONCRETE 42" DEEP
124	6" CONC. SLAB WITH 6X6 - W1.4 X W1.4 WWF OVER COMPACTED GRANULAR FILL - SLOPE TOWARDS DOORS TO ENSURE POSITIVE DRAINAGE
125	3/4" CONTROL EXPANSION JOINT - FILL WITH EXPANSION JOINT MATERIAL & PROVIDE SEALANT AT TOP

**Oculus Inc.**  
CONNECT • SHAPE • MOVE



ARCHITECTURE • INTERIOR DESIGN • PLANNING  
ONE SOUTH MEMORIAL DRIVE | SUITE 1500ST. LOUIS, MO 63102 |  
(314) 367-6100



LIONS CHOICE - LEE'S SUMMIT

SUMMIT ORCHARDS DEVELOPMENT  
LOT 4

#	Description	Date
---	-------------	------

These drawings/specifications are the property of Oculus Inc. They are furnished as contract documents only. The user(s) and signatory(s) apply only to the document to which they are affixed, and expressly disclaim any responsibility for all other plans, specifications, estimates, reports or other documents or instruments relating to or intended to be used for any part or parts of the architectural or engineering project. Additionally these drawings and seals shall in no way convey or imply any type of warranty or certification relating to the performance of products and materials beyond those provided by their respective manufacturer.  
© 2019 Oculus Inc.

Missouri Corporate Authority Number #914  
Missouri Architect in responsible Charge - Ronald Nelson Raim AR-5489

**FINAL DEVELOPMENT**  
Client Approval: **PLAN REFUSE**  
**ENCLOSURE PLAN, ELEVATIONS, AND DETAILS**

Project #	52119-M002
Issue Date	8/27/2019
Scale	As indicated
Drawn by	ZTM
Checked by	JMB

A4.1