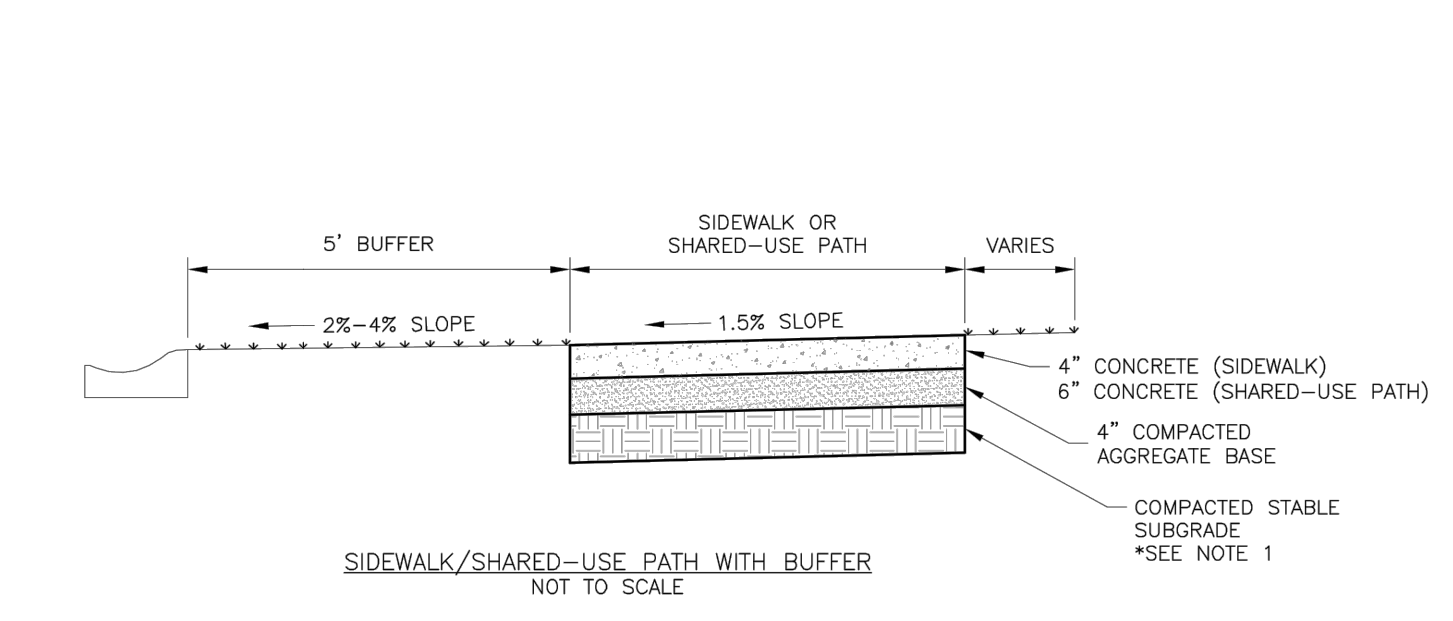
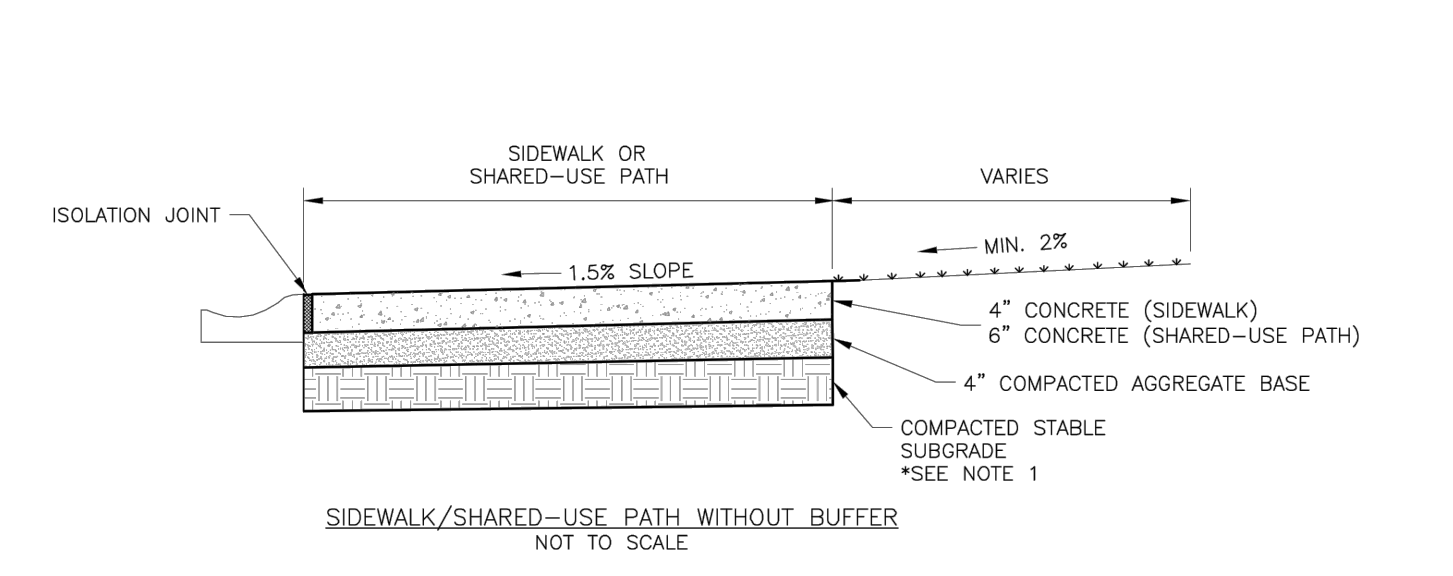


- NOTES:**
1. WHEN RESTRAINER GLANDS ARE USED IN LIEU OF MECHANICAL JOINT (MJ) RESTRAINT FITTINGS, HORIZONTAL THRUST BLOCKS ARE REQUIRED.
  2. GATE VALVE MAY BE BOLTED DIRECTLY TO MJ RESTRAINT TEE.
  3. SEE APPROVED PRODUCTS LIST FOR WATER UTILITIES FOR FIRE HYDRANT, VALVES, VALVE BOX LID, AND COVER.
  4. BOTTOM HYDRANT FLANGE SHALL BE 2" TO 6" ABOVE FINISHED GRADE.
  5. FOR STREETS WITHOUT CURBS FIRE HYDRANTS SHALL BE PLACED WITHIN 1 FOOT OF THE R/W LINE, BUT NOT MORE THAN 10' FROM EDGE OF PAVEMENT. FIRE HYDRANT SHALL NOT BE PLACED IN BOTTOM OF DITCH.
  6. HYDRANT SHALL BE ROTATED AS DIRECTED BY INSPECTOR.



- GENERAL NOTES:**
1. SUBGRADE MUST BE OF STABLE, COMPACTED EARTH AND SHALL BE OVERLAYED WITH 4" COMPACTED DENSE GRADED AGGREGATE BASE.
  2. 1.5% CROSS SLOPE MUST BE MAINTAINED THROUGH DRIVEWAYS.
  3. KOMMS 4K CONCRETE MIX SHALL BE REQUIRED FOR ALL SIDEWALKS AND SHARED-USE PATHS OR AS APPROVED BY THE CITY INSPECTOR.
  4. ALL SIDEWALKS SHALL MEET CURRENT PUBLIC RIGHT OF WAY ACCESSIBILITY GUIDELINES (PROWAG).
  5. AN EXPANSION JOINT SHALL BE PLACED AT A MAXIMUM OF 150 FT. CONSTRUCTION JOINTS SHALL BE PLACED THE SAME WIDTH OF SIDEWALK, BUT NO GREATER THAN 10 FT.
  6. SHARED-USE PATH WIDTH SHALL BE 10 FT. WIDE.
  7. SIDEWALK FINISHING (NO PICTURE FRAMING) AS DIRECTED BY CITY INSPECTOR.
  8. WHITE CURING COMPOUND MUST BE APPLIED UNIFORMLY TO THE CONCRETE SURFACE IMMEDIATELY AFTER FINAL FINISHING.

**LEE'S SUMMIT MISSOURI**  
PUBLIC WORKS ENGINEERING DIVISION | 1200 SE GREEN STREET | LEE'S SUMMIT, MO 64063

DATE: 02/13  
DRAWN BY: JN  
CHECKED BY: DL  
FILE: 1847-7  
REV: 1/14

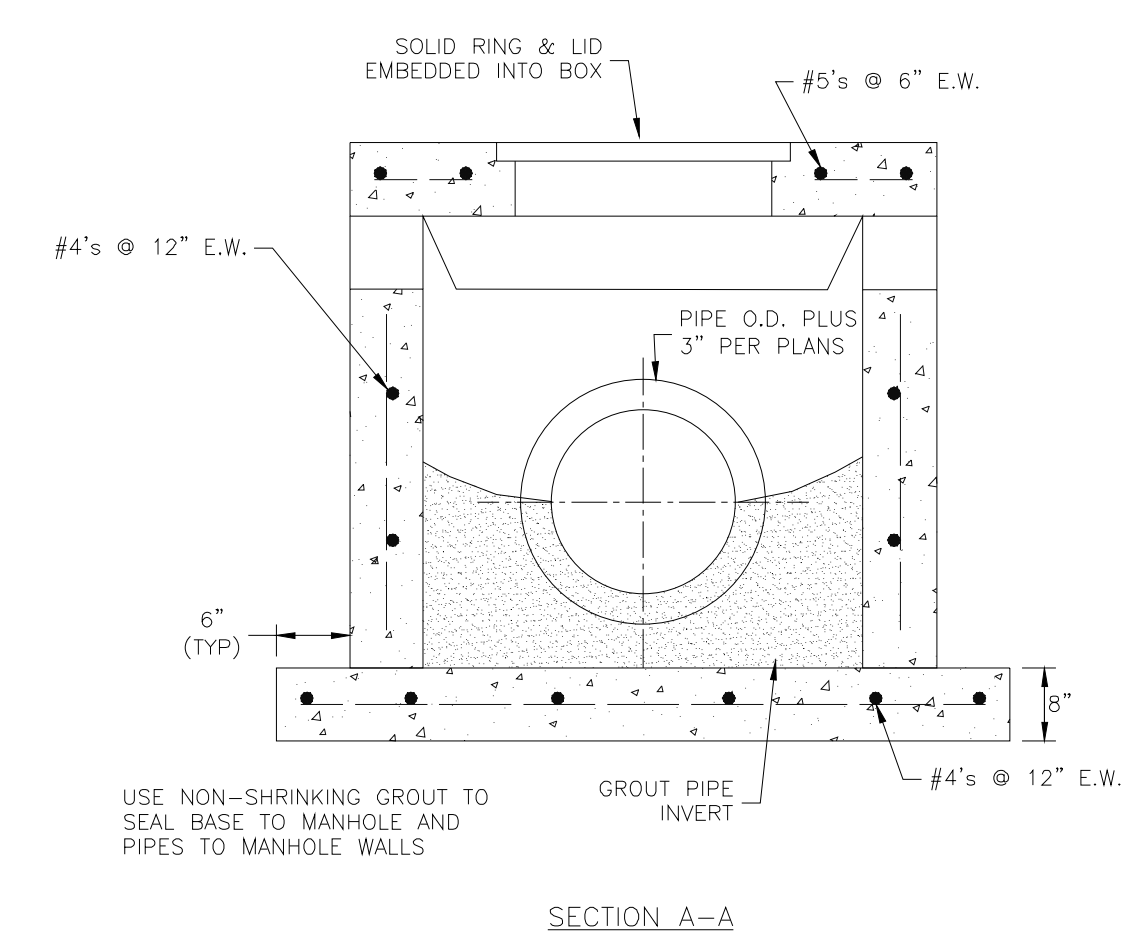
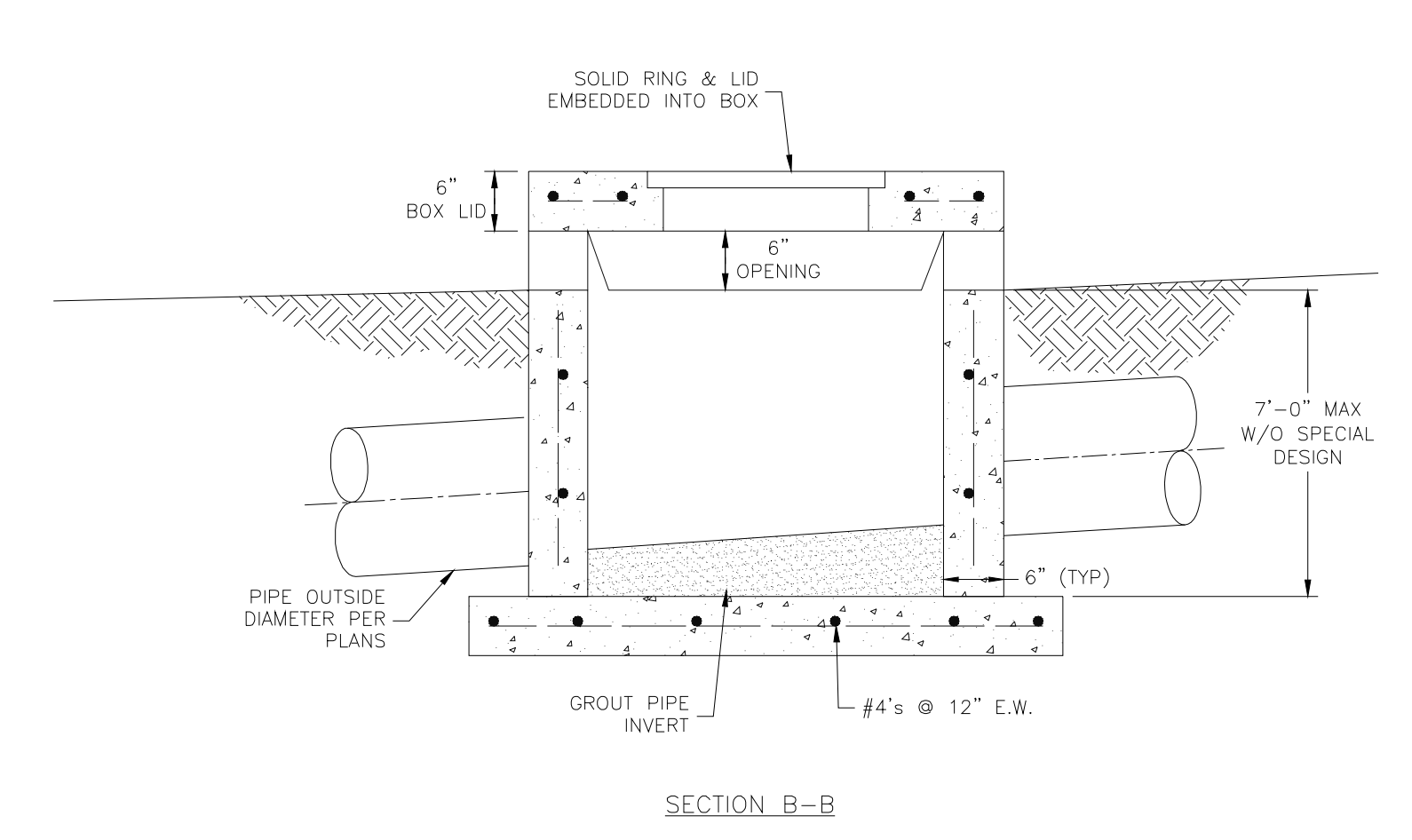
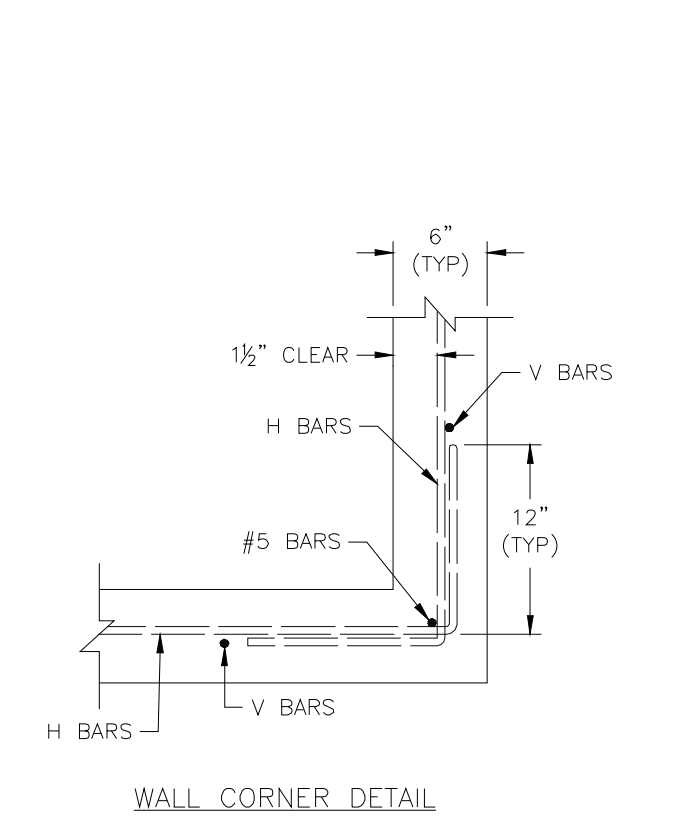
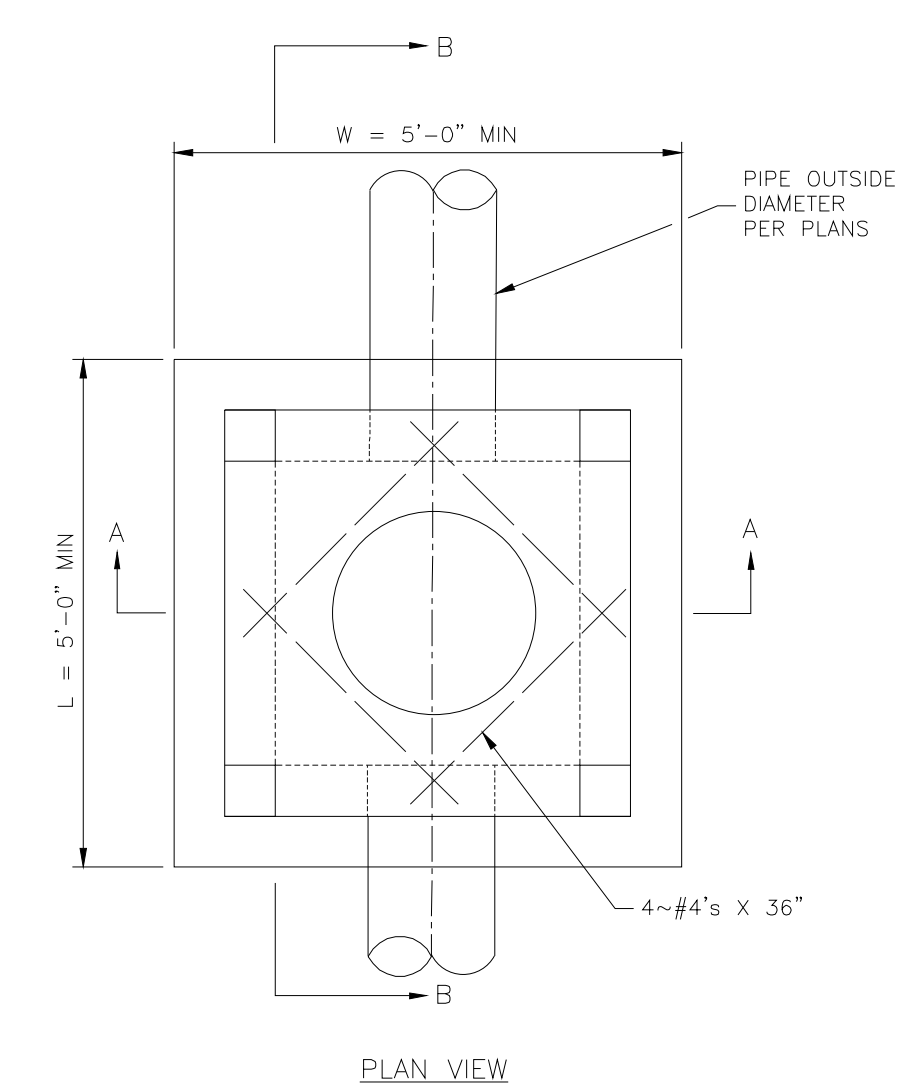
**HYDRANT INSTALLATION - STRAIGHT SET**

**LEE'S SUMMIT MISSOURI**  
PUBLIC WORKS ENGINEERING DIVISION | 1200 SE GREEN STREET | LEE'S SUMMIT, MO 64063

DATE: 04/17  
DRAWN BY: MIF  
CHECKED BY: DL

**SIDEWALK/SHARED-USE PATH DETAIL**

GEN-2



- GENERAL NOTES:**
1. LOCATE RING AND COVER OVER OUTLET ON BLANK WALL.
  2. USE 3/4" CHAMFER ON ALL EXPOSED CONCRETE CORNERS.
  3. FLOOR OF INLET GROUTED AND SHAPED TO MATCH PIPE INVERT TO PROVIDE SMOOTH FLOW.
  4. STEPS REQUIRED AT 16" O.C. WHEN DEPTH FROM TOP OF CASTING TO INVERT EXCEEDS 3' ON BLANK WALL IF POSSIBLE.
  5. BOXOUTS WILL NOT BE ALLOWED TO PROJECT THROUGH THE CORNERS OF THE STRUCTURE.
  6. THE MINIMUM REINFORCING SHALL BE 1 H-BAR OVER A CAST-IN-PLACE PIPE AND 2 H-BARS OVER A PRECAST BOXOUT.
  7. SHOW FIELD INLET ORIENTATION ON PLANS PLUS NUMBER AND SIDE OF OPENINGS.
  8. PRECAST LIDS SHALL BE PINNED, SEALED WITH NON-SHRINKABLE GROUT AND REMOVABLE FOR FUTURE MAINTENANCE.
  9. FOR RING AND COVER SEE THE STORMWATER APPROVED PRODUCT LIST.

**LEE'S SUMMIT MISSOURI**  
PUBLIC WORKS ENGINEERING DIVISION | 1200 SE GREEN STREET | LEE'S SUMMIT, MO 64063

STANDARD DETAILS  
CITY OF LEE'S SUMMIT, MO  
LEE'S SUMMIT, JACKSON COUNTY, MO

FIELD INLET DETAIL

Drawn By: MIF  
Checked By: DL  
Date: 04/17  
Proj. #:

**STM-2**

NO.	BY	DATE	REVISION

IF THIS IS NOT A BLUE INK SEAL AND THE SIGNATURE IN BLUE INK THE PLAN IS A COPY AND MAY CONTAIN UNAUTHORIZED ALTERATIONS. THE CERTIFICATION CONTAINED ON THIS DOCUMENT SHALL NOT APPLY TO ANY COPIES.

R. KEVIN STERRETT, MO E-26440  
CORPORATE LICENSE NO. E2201005873

**Consult Inc engineers planners**

**8**

SITE DETAIL SHEET

HIGH TECH SOLUTIONS

LEE'S SUMMIT - JACKSON COUNTY - MISSOURI

X-REF NO.  
181.508

DRAWING NO.  
1806.3

DATE  
OCTOBER 12, 2018

JOB NO.  
1806.3

11 SHEET OF 11