

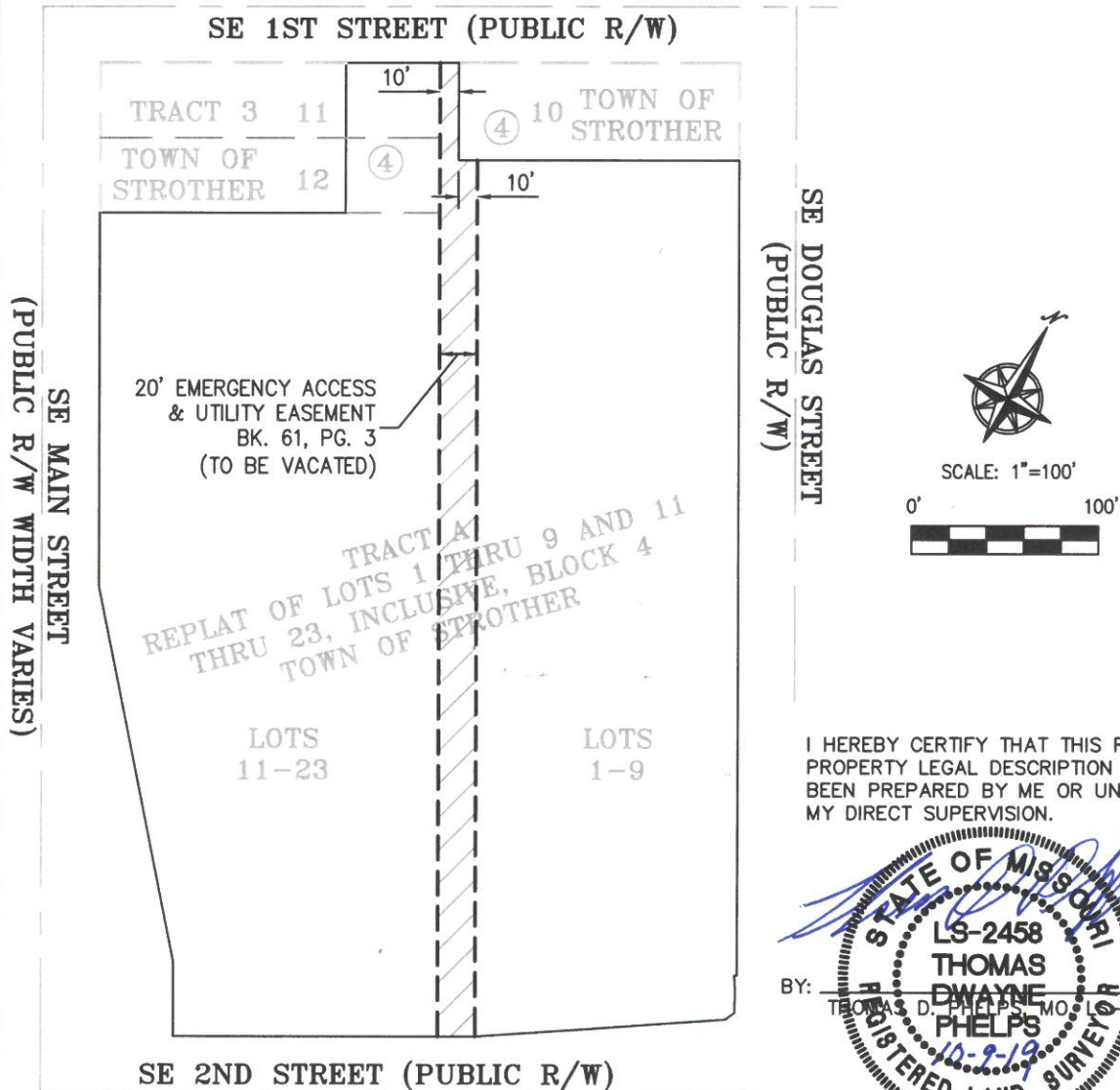
# EXHIBIT "A"

## EMERGENCY ACCESS & UTILITY EASEMENT VACATION

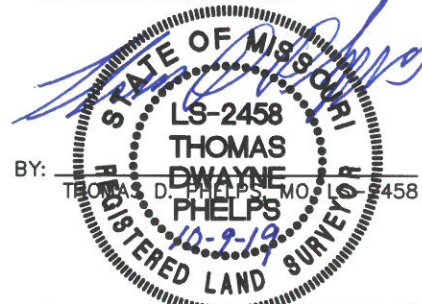
### PART OF TRACT A, REPLAT OF LOTS 1 THRU 9 AND 11 THRU 23, INCLUSIVE, BLOCK 4 TOWN OF STROTHER, A SUBDIVISION IN THE CITY OF LEE'S SUMMIT, JACKSON COUNTY, MISSOURI.

**DESCRIPTION:**

ALL OF THE 20 FOOT WIDE EMERGENCY ACCESS EASEMENT AND UTILITY EASEMENT AS SHOWN ON TRACT A, REPLAT OF LOTS 1 THRU 9 AND 11 THRU 23, INCLUSIVE, BLOCK 4 TOWN OF STROTHER, A SUBDIVISION IN THE CITY OF LEE'S SUMMIT, JACKSON COUNTY, MISSOURI AS RECORDED IN BOOK I-61 AT PAGE 3 AT THE OFFICE OF RECORDER OF DEEDS IN JACKSON COUNTY, MISSOURI.



I HEREBY CERTIFY THAT THIS REAL PROPERTY LEGAL DESCRIPTION HAS BEEN PREPARED BY ME OR UNDER MY DIRECT SUPERVISION.



\\PHELPS-SERVER\Projects\P\171125\dwg\Exhibits\EASEMENTS\EASEMENT VACATION.dwg Layout:1 Oct 09, 2019 - 1:44pm SHEET 1 OF 1