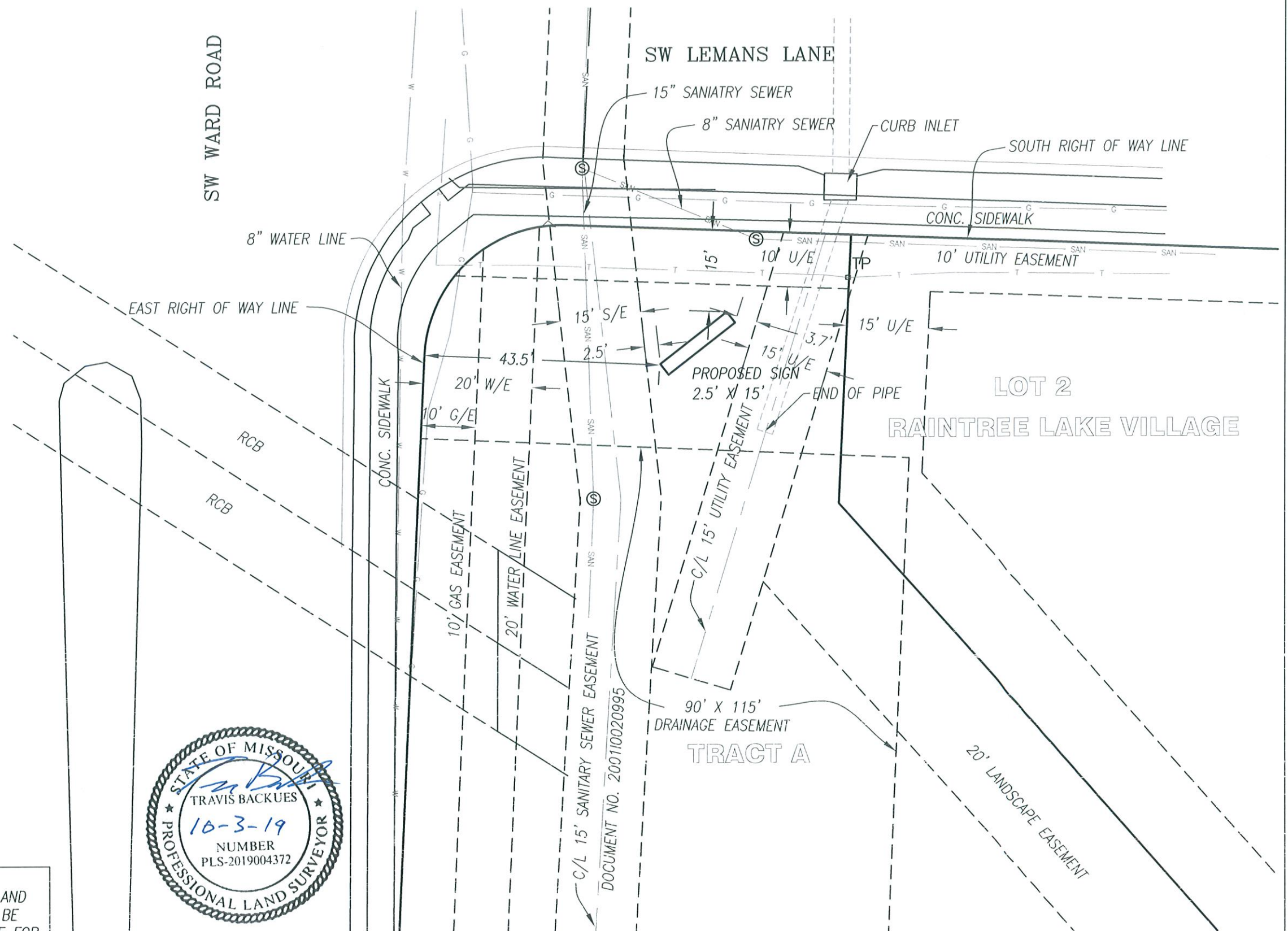


Call
1-800-344-7483 (MISSOURI)
1-800-344-7233 (KANSAS)

A circular professional seal for Travis Backues, a Professional Land Surveyor in the State of Missouri. The seal features a rope-like border. Inside the border, the text "STATE OF MISSOURI" is at the top and "PROFESSIONAL LAND SURVEYOR" is at the bottom, separated by two stars. The center of the seal contains the name "TRAVIS BACKUES" and the license number "PLS-2019004372". A handwritten date "10-3-19" is written over the name and number. A blue ink signature is written across the top half of the seal.

I HEREBY CERTIFY, THAT THIS EXHIBIT WAS
PREPARED BY ME OR UNDER MY DIRECT
SUPERVISION.
BY: TRAVIS BACKUES, PLS-2019004372
FIELD WORK DATE: OCTOBER 3, 2019



ROYAL SIGNS
1921 SW 40 HWY., SUITE D
BLUE SPRINGS, MO 64015

A PART OF TRACT A, RAINTREE LAKE VILLAGE,
A SUBDIVISION IN
LEE'S SUMMIT, JACKSON COUNTY, MISSOURI

BOUNDARY & CONSTRUCTION SURVEYING, INC.

821 NE COLUMBUS STREET SUITE 100, LEE'S SUMMIT, MO. 64063
PH.# 816/554-9798, FAX # 816/554-0337

PROJECT NO. <u>19-289</u>	SHEET 1 OF 1
---------------------------	--------------