



1818 HWY. M
BARNHART, MO 63012
PH: 636-464-0200
FAX: 636-464-9990
WWW.PIROSSIGNS.COM
GRAPHICS@PIROSSIGNS.COM

CUSTOMER
Lions Choice

JOB LOCATION
Lees Summit

CONTACT

SALES PERSON
Mike M
DATE
8/19/19
DRAWN BY
Mike R
SAVED AS
19-5021 Lees Summit Lions
Choice

RENDERING #
-01

REVISION(S)
-02:

-03:

-04:

-05:

-06:

-07:

-08:

-09:

-10:

☐ APPROVED AS IS
☐ APPROVED AS NOTED
☐ REVISE & RESUBMIT

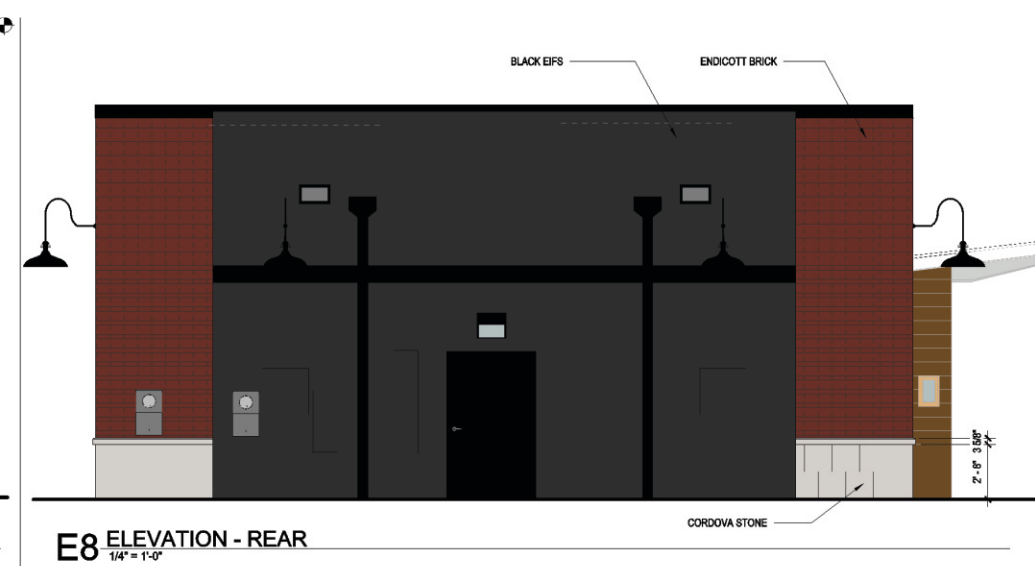
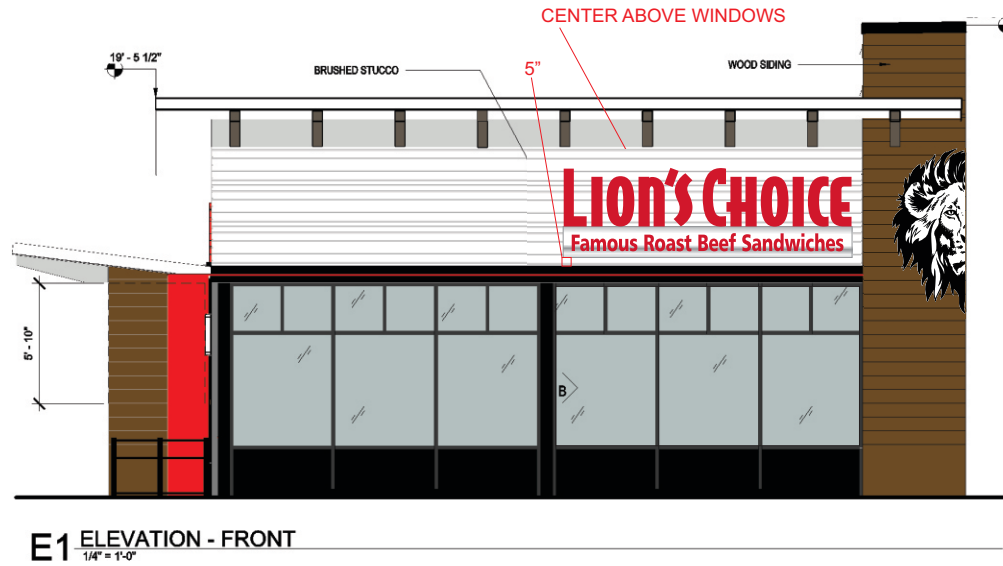
INITIALS _____

THIS PROOF IS APPROVED AS IS. NO WORK SHALL BEGIN UNTIL PIROSS RECEIVES A SIGNED COPY. ANY CHANGES MAY RESULT IN A CHANGE IN THE PRICE QUOTED.

THIS DRAWING IS COPYRIGHT PROTECTED AND IS SOLE PROPERTY OF PIROSS SIGNS INC. AND HAS BEEN PRE-PARED FOR YOUR VIEWING ONLY. THIS DRAWING MAY NOT BE REPRODUCED, DUPLICATED OR CONSTRUCTED WITHOUT WRITTEN PERMISSION OR PURCHASE FROM PIROSS SIGNS INC.



THIS SIGN IS INTENDED TO BE INSTALLED IN ACCORDANCE WITH THE REQUIREMENTS OF ARTICLE 600 OF THE NATIONAL ELECTRIC CODE AND/OR OTHER APPLICABLE LOCAL CODES. THIS INCLUDES PROPER GROUNDING AND BONDING OF THE SIGN.





1818 HWY. M
BARNHART, MO 63012
PH: 636-464-0200
FAX: 636-464-9990
WWW.PIROSSIGNS.COM
GRAPHICS@PIROSSIGNS.COM

CUSTOMER
Lions Choice

JOB LOCATION
Lees Summit

CONTACT

SALES PERSON
Mike M

DATE
8/19/19

DRAWN BY
Mike R

SAVED AS
19-5021 Lees Summit Lions
Choice

RENDERING #
-01

REVISION(S)
-02:

-03:

-04:

-05:

-06:

-07:

-08:

-09:

-10:

☐ APPROVED AS IS
☐ APPROVED AS NOTED
☐ REVISE & RESUBMIT


INITIALS _____

THIS PROOF IS APPROVED AS IS. NO WORK SHALL BEGIN UNTIL PIROSS RECEIVES A SIGNED COPY. ANY CHANGES MAY RESULT IN A CHANGE IN THE PRICE QUOTED.

THIS DRAWING IS COPYRIGHT PROTECTED AND IS SOLE PROPERTY OF PIROSS SIGNS INC. AND HAS BEEN PRE-PARED FOR YOUR VIEWING ONLY. THIS DRAWING MAY NOT BE REPRODUCED, DUPLICATED OR CONSTRUCTED WITHOUT WRITTEN PERMISSION OR PURCHASE FROM PIROSS SIGNS INC.



FILE NUMBER EM0574



ELECTRIC
SIGN

THIS SIGN IS INTENDED TO BE INSTALLED IN ACCORDANCE WITH THE REQUIREMENTS OF ARTICLE 600 OF THE NATIONAL ELECTRIC CODE AND/OR OTHER APPLICABLE LOCAL CODES. THIS INCLUDES PROPER GROUNDING AND BONDING OF THE SIGN.



Front Lit Channel Letters w/ Logo on Raceway

SCALE: 1/2" = 1'-0"

FABRICATE AND INSTALL (x3) SETS FRONT LIT CHANNEL LETTERS AND LOGO ON RACEWAYS.

CHANNEL LETTERS

- INDIVIDUALLY FABRICATED ALUMINUM LETTERS
- RED PLASTIC FACES
- LETTER RETURNS PAINTED MAP TO MATCH PMS 186 RED
- LETTERS ILLUMINATED WITH RED LED
- LETTERS MOUNTED ON TOP OF RACEWAY

LOGO CABINET

- CUSTOM SHAPED ALUMINUM CABINET
- WHITE PLASTIC FACE
- FACE DECORATED WITH OPAQUE BLACK VINYL
- ILLUMINATED WITH WHITE LED
- CABINET RETURN PAINTED BLACK
- CABINET MOUNTED ON FACE OF RACEWAY

RACEWAY

- FABRICATED ALUMINUM CABINET WITH ROUTED FACE
- FACE BACKED UP WITH RED PLASTIC
- ILLUMINATED WITH RED LED
- RACEWAY PAINTED TO MAP BRUSHED ALUMINUM
- RACEWAY MOUNTED TO TOP OF CANOPY



PMS 186 RED
ARLON 33 RED VINYL
2793 RED ACRYLIC



OPAQUE BLACK VINYL



MAP BRUSHED ALUMINUM



1818 HWY. M
BARNHART, MO 63012
PH: 636-464-0200
FAX: 636-464-9990
WWW.PIROSSIGNS.COM
GRAPHICS@PIROSSIGNS.COM

CUSTOMER
Lions Choice

JOB LOCATION
Lees Summit

CONTACT

SALES PERSON
Mike M

DATE
8/19/19

DRAWN BY
Mike R

SAVED AS
19-5021 Lees Summit Lions
Choice

RENDERING #
-02

REVISION(S)
**-02:Changed B1 to black
illuminated lion**

-03:

-04:

-05:

-06:

-07:

-08:

-09:

-10:

☐ APPROVED AS IS
☐ APPROVED AS NOTED
☐ REVISE & RESUBMIT


INITIALS _____

THIS PROOF IS APPROVED AS IS. NO WORK SHALL BEGIN UNTIL PIROS RECEIVES A SIGNED COPY. ANY CHANGES MAY RESULT IN A CHANGE IN THE PRICE QUOTED.

THIS DRAWING IS COPYRIGHT PROTECTED AND IS SOLE PROPERTY OF PIROS SIGNS INC. AND HAS BEEN PRE-PARED FOR YOUR VIEWING ONLY. THIS DRAWING MAY NOT BE REPRODUCED, DUPLICATED OR CONSTRUCTED WITHOUT WRITTEN PERMISSION OR PURCHASE FROM PIROS SIGNS INC.

PIROS SIGNS
INCORPORATED

FILE NUMBER E340574

**ELECTRIC
SIGN**

LISTED

THIS SIGN IS INTENDED TO BE INSTALLED IN ACCORDANCE WITH THE REQUIREMENTS OF ARTICLE 600 OF THE NATIONAL ELECTRIC CODE AND/OR OTHER APPLICABLE LOCAL CODES. THIS INCLUDES PROPER GROUNDING AND BONDING OF THE SIGN.

Halo Illuminated Wall / Stack Sign

SCALE: 3/4" = 1'-0"

PRODUCE & INSTALL 1 WALL SIGN TO GO ON BUILDING CORNER (2 ELEVATIONS).

- CONTOUR CUT PERFORATED ALUMINUM PANEL PAINTED WHITE
- ROUTED 3/8" CLEAR ACRYLIC LION DETAILS PAINTED BLACK
- ACRYLIC MOUNTED TO PERFORATED ALUMINUM WITH STUDS
- SIGN TO STAND OFF SURFACE 1-1/2" - 2"
- MOUNTING METHOD TBD
- ILLUMINATED WITH WHITE LED



WALL MATERIALS AND
COLOR TBD





1818 HWY. M
BARNHART, MO 63012
PH: 636-464-0200
FAX: 636-464-9990
WWW.PIROSSIGNS.COM
GRAPHICS@PIROSSIGNS.COM

CUSTOMER
Lion's Choice

JOB LOCATION
Lee's Summit

CONTACT

SALES PERSON
Mike McGuire

DATE
09/19/19

DRAWN BY
Dave Filla

SAVED AS
190203-02 LC Lee's Summit
Monument

RENDERING #
190203-02

REVISION(S)
-02: Called out specific brick to
be used.

-03:

-04:

-05:

-06:

-07:

-08:

-09:

-10:

☐ APPROVED AS IS
☐ APPROVED AS NOTED
☐ REVISE & RESUBMIT

INITIALS _____
THIS PROOF IS APPROVED AS IS. NO WORK SHALL BEGIN UNTIL PIROS RECEIVES
A SIGNED COPY. ANY CHANGES MAY RESULT IN A CHANGE IN THE PRICE QUOTED.

THIS DRAWING IS COPYRIGHT PROTECTED AND IS
SOLE PROPERTY OF PIROS SIGNS INC. AND HAS
BEEN PRE-PARED FOR YOUR VIEWING ONLY. THIS
DRAWING MAY NOT BE REPRODUCED, DUPLICATED
OR CONSTRUCTED WITHOUT WRITTEN PERMISSION
OR PURCHASE FROM PIROS SIGNS INC.



THIS SIGN IS INTENDED TO BE INSTALLED IN
ACCORDANCE WITH THE REQUIREMENTS OF
ARTICLE 600 OF THE NATIONAL ELECTRIC
CODE AND/OR OTHER APPLICABLE LOCAL
CODES. THIS INCLUDES PROPER GROUNDING
AND BONDING OF THE SIGN.

A

Monument Sign

Scale: 3/8"=1'-0"

SUPPLY AND INSTALL (1) DOUBLE SIDED INTERNALLY
ILLUMINATED MONUMENT SIGN.

- FABRICATED ALUMINUM CABINET
- CABINET AND RETAINERS PAINTED DARK BRONZE
- WHITE PLASTIC FACES
- FACES DECORATED WITH TRANSLUCENT VINYL
- CABINET ILLUMINATED WITH WHITE LED
- MASONRY BASE - BRICK TO MATCH BUILDING
- 25 SQ FT LANDSCAPING
- 0 SETBACK FROM PROPERTY LINE
(NOT TO EXTEND INTO UTILITY EASEMENT)

90 SQ FT



DARK BRONZE



CORDOVA STONE
GROUNDFACE LIMESTONE



ENDICOTT BRICK, EXECUTIVE
IRONSPOT - VELOUR MODULAR





1818 HWY. M
BARNHART, MO 63012
PH: 636-464-0200
FAX: 636-464-9990
WWW.PIROSSIGNS.COM
GRAPHICS@PIROSSIGNS.COM

CUSTOMER
Lions Choice

JOB LOCATION
Lees Summit

CONTACT

SALES PERSON
Mike M

DATE
8/19/19

DRAWN BY
Mike R

SAVED AS
19-5021 Lees Summit Lions
Choice

RENDERING #
-02

REVISION(S)
-02:Changed B1 to black
illuminated lion

-03:

-04:

-05:

-06:

-07:

-08:

-09:

-10:

☐ APPROVED AS IS
☐ APPROVED AS NOTED
☐ REVISE & RESUBMIT

INITIALS _____
THIS PROOF IS APPROVED AS IS. NO WORK SHALL BEGIN UNTIL PIROS RECEIVES A SIGNED COPY. ANY CHANGES MAY RESULT IN A CHANGE IN THE PRICE QUOTED.

THIS DRAWING IS COPYRIGHT PROTECTED AND IS SOLE PROPERTY OF PIROS SIGNS INC. AND HAS BEEN PRE-PARED FOR YOUR VIEWING ONLY. THIS DRAWING MAY NOT BE REPRODUCED, DUPLICATED OR CONSTRUCTED WITHOUT WRITTEN PERMISSION OR PURCHASE FROM PIROS SIGNS INC.

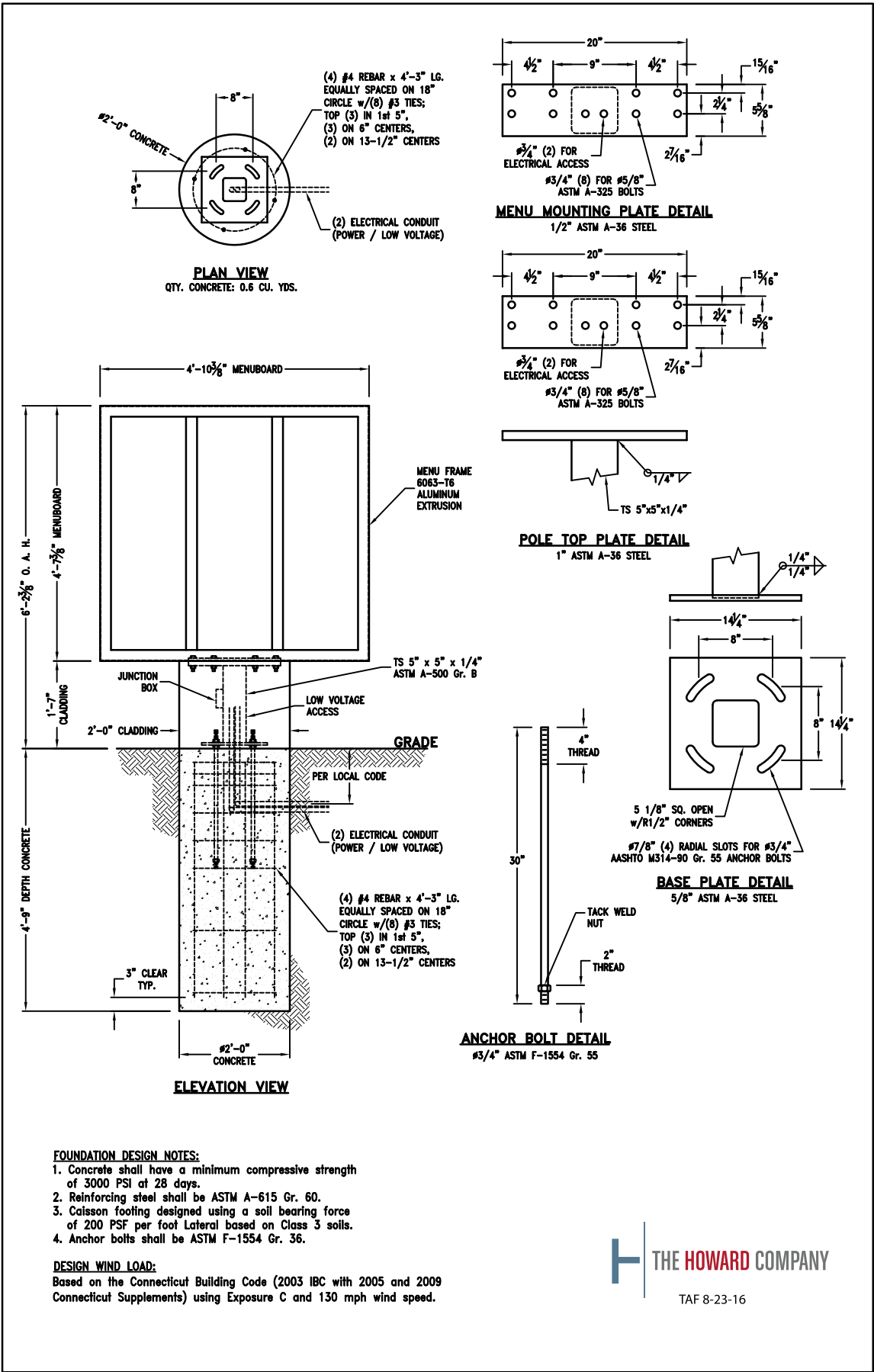


FILE NUMBER EM0574



ELECTRIC
SIGN

THIS SIGN IS INTENDED TO BE INSTALLED IN ACCORDANCE WITH THE REQUIREMENTS OF ARTICLE 600 OF THE NATIONAL ELECTRIC CODE AND/OR OTHER APPLICABLE LOCAL CODES. THIS INCLUDES PROPER GROUNDING AND BONDING OF THE SIGN.



NOT TO SCALE



1818 HWY. M
BARNHART, MO 63012
PH: 636-464-0200
FAX: 636-464-9990
WWW.PIROSSIGNS.COM
GRAPHICS@PIROSSIGNS.COM

CUSTOMER
Lions Choice

JOB LOCATION
Lees Summit

CONTACT

SALES PERSON
Mike M

DATE
8/19/19

DRAWN BY
Mike R

SAVED AS
19-5021 Lees Summit Lions
Choice

RENDERING #

-02

REVISION(S)

-02: Changed B1 to black
illuminated lion

-03:

-04:

-05:

-06:

-07:

-08:

-09:

-10:

☐ APPROVED AS IS
☐ APPROVED AS NOTED
☐ REVISE & RESUBMIT

INITIALS _____

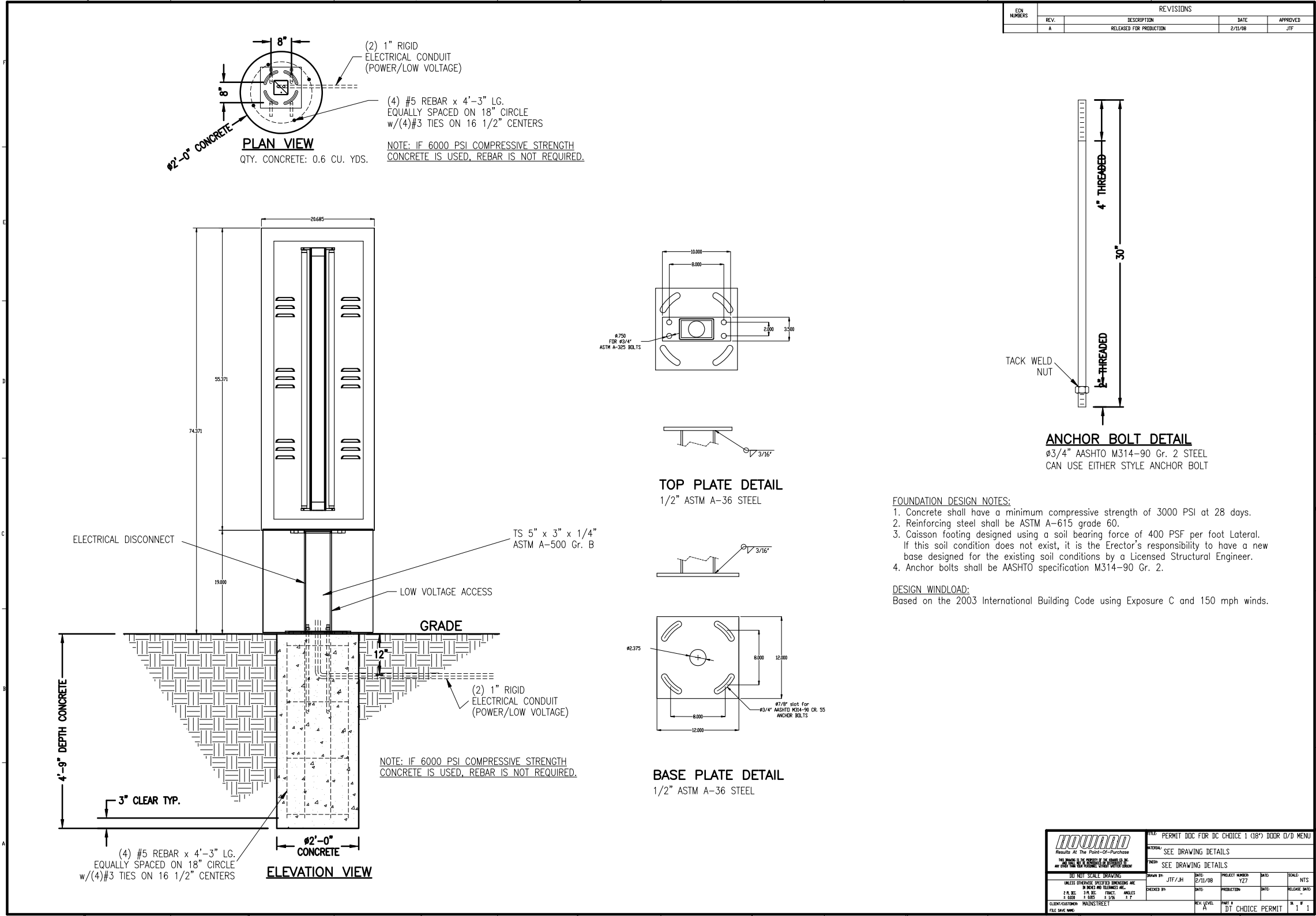
THIS PROOF IS APPROVED AS IS. NO WORK SHALL BEGIN UNTIL PIROSS RECEIVES
A SIGNED COPY. ANY CHANGES MAY RESULT IN A CHANGE IN THE PRICE QUOTED.

THIS DRAWING IS COPYRIGHT PROTECTED AND IS
SOLE PROPERTY OF PIROSS SIGNS INC. AND HAS
BEEN PRE-PARED FOR YOUR VIEWING ONLY. THIS
DRAWING MAY NOT BE REPRODUCED, DUPLICATED
OR CONSTRUCTED WITHOUT WRITTEN PERMISSION
OR PURCHASE FROM PIROSS SIGNS INC.



THIS SIGN IS INTENDED TO BE INSTALLED IN
ACCORDANCE WITH THE REQUIREMENTS OF
ARTICLE 600 OF THE NATIONAL ELECTRIC
CODE AND/OR OTHER APPLICABLE LOCAL
CODES. THIS INCLUDES PROPER GROUNDING
AND BONDING OF THE SIGN.

NOT TO SCALE



HOWARD Residential & Commercial Building Division		PERMIT DOC FOR DC CHOICE 1 (18") DOOR U/D MENU	
UNLESS OTHERWISE SPECIFIED, DIMENSIONS ARE IN INCHES AND TOLERANCES ARE ± 1/8"		SEE DRAWING DETAILS	
DO NOT SCALE DRAWING		SEE DRAWING DETAILS	
DRAWN BY: JTF/JH	DATE: 8/19/19	PROJECT NUMBER: 127	SCALE: NTS
CHECKED BY: JTF	DATE: 8/19/19	PRODUCTION: JTF	RELEASE DATE: -
CLIENT/CUSTOMER: MAIN STREET	REV. LEVEL: A	PART: 1 OF 1	DT CHOICE, PERMIT
FILE NAME: 19-5021		1	



1818 HWY. M
BARNHART, MO 63012
PH: 636-464-0200
FAX: 636-464-9990
WWW.PIROSSIGNS.COM
GRAPHICS@PIROSSIGNS.COM

CUSTOMER
Lions Choice

JOB LOCATION
Lees Summit

CONTACT

SALES PERSON
Mike M
DATE
8/19/19
DRAWN BY
Mike R
SAVED AS
19-5021 Lees Summit Lions
Choice

RENDERING #

-02

REVISION(S)

-02:Changed B1 to black
illuminated lion

-03:

-04:

-05:

-06:

-07:

-08:

-09:

-10:

☐ APPROVED AS IS
☐ APPROVED AS NOTED
☐ REVISE & RESUBMIT

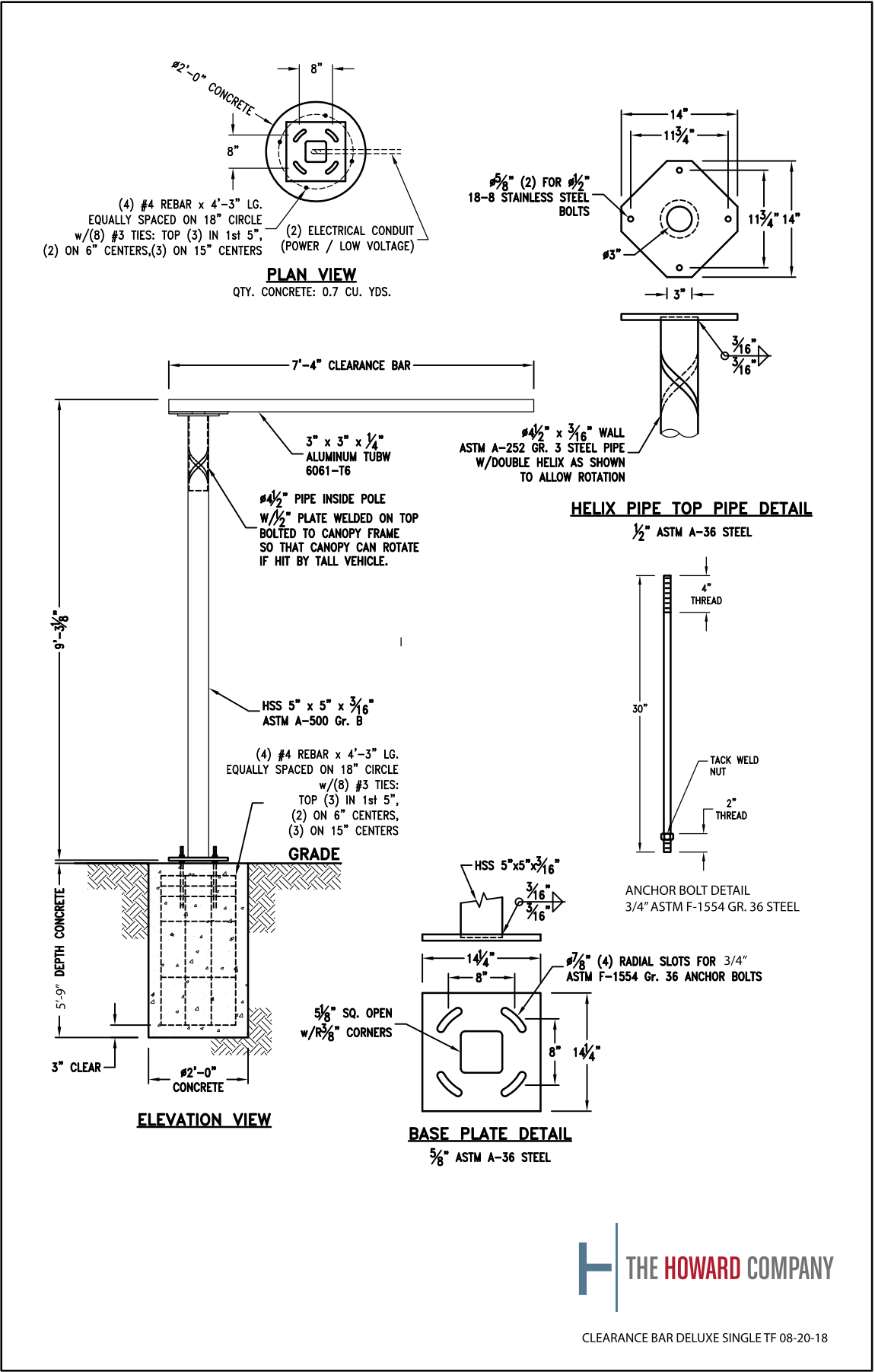
INITIALS _____

THIS PROOF IS APPROVED AS IS. NO WORK SHALL BEGIN UNTIL PIROS RECEIVES
A SIGNED COPY. ANY CHANGES MAY RESULT IN A CHANGE IN THE PRICE QUOTED.

THIS DRAWING IS COPYRIGHT PROTECTED AND IS
SOLE PROPERTY OF PIROS SIGNS INC. AND HAS
BEEN PRE-PARED FOR YOUR VIEWING ONLY. THIS
DRAWING MAY NOT BE REPRODUCED, DUPLICATED
OR CONSTRUCTED WITHOUT WRITTEN PERMISSION
OR PURCHASE FROM PIROS SIGNS INC.



THIS SIGN IS INTENDED TO BE INSTALLED IN
ACCORDANCE WITH THE REQUIREMENTS OF
ARTICLE 600 OF THE NATIONAL ELECTRIC
CODE AND/OR OTHER APPLICABLE LOCAL
CODES. THIS INCLUDES PROPER GROUNDING
AND BONDING OF THE SIGN.





1818 HWY. M
BARNHART, MO 63012
PH: 636-464-0200
FAX: 636-464-9990
WWW.PIROSSIGNS.COM
GRAPHICS@PIROSSIGNS.COM

CUSTOMER
Lions Choice

JOB LOCATION
Lees Summit

CONTACT

SALES PERSON
Mike M

DATE
8/19/19

DRAWN BY
Mike R

SAVED AS
19-5021 Lees Summit Lions
Choice

RENDERING #
-02

REVISION(S)
-02:Changed B1 to black
illuminated lion

-03:

-04:

-05:

-06:

-07:

-08:

-09:

-10:

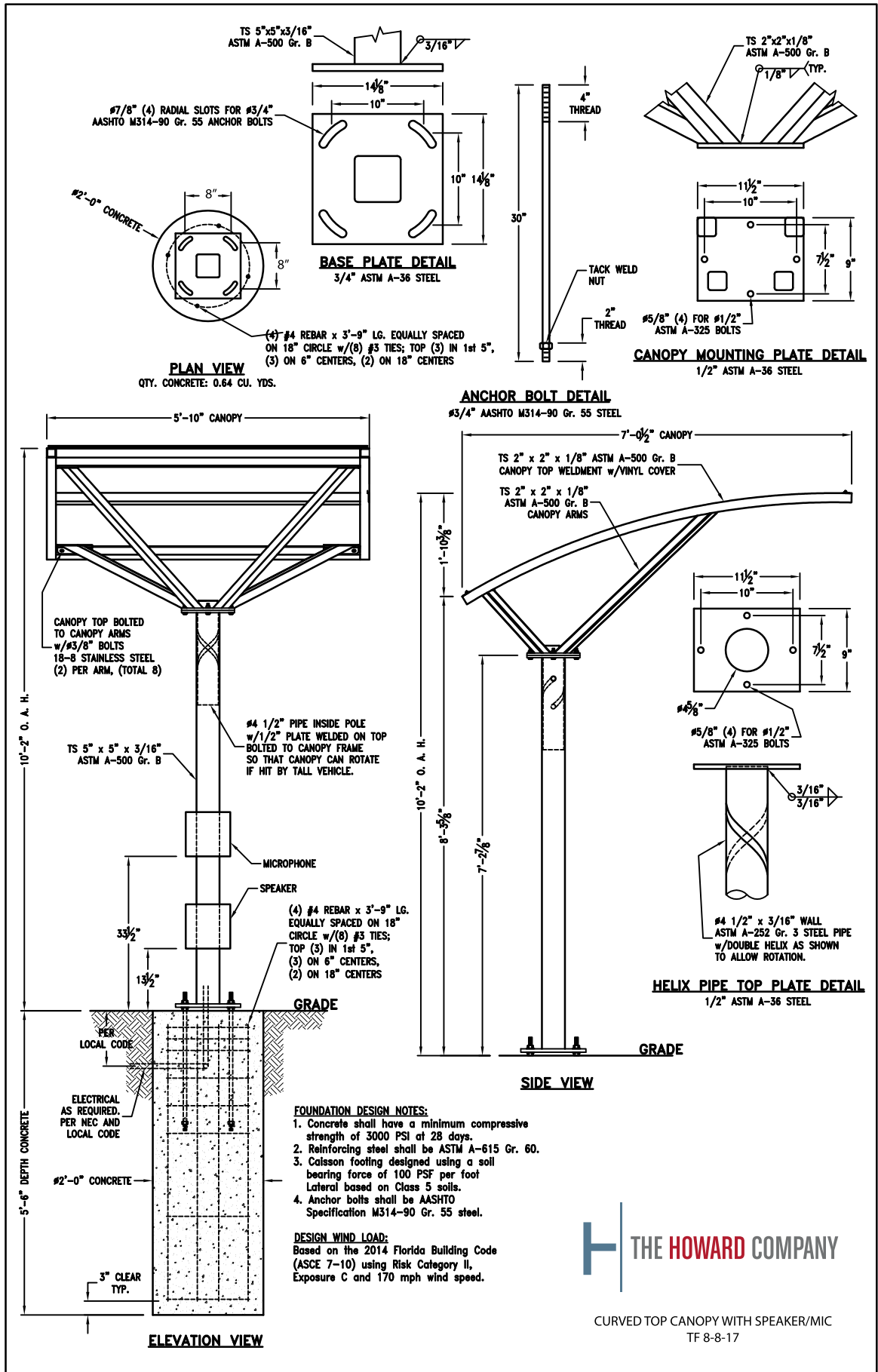
☐ APPROVED AS IS
☐ APPROVED AS NOTED
☐ REVISE & RESUBMIT

INITIALS _____
THIS PROOF IS APPROVED AS IS. NO WORK SHALL BEGIN UNTIL PIROSS RECEIVES A SIGNED COPY. ANY CHANGES MAY RESULT IN A CHANGE IN THE PRICE QUOTED.

THIS DRAWING IS COPYRIGHT PROTECTED AND IS SOLE PROPERTY OF PIROSS SIGNS INC. AND HAS BEEN PRE-PARED FOR YOUR VIEWING ONLY. THIS DRAWING MAY NOT BE REPRODUCED, DUPLICATED OR CONSTRUCTED WITHOUT WRITTEN PERMISSION OR PURCHASE FROM PIROSS SIGNS INC.



THIS SIGN IS INTENDED TO BE INSTALLED IN ACCORDANCE WITH THE REQUIREMENTS OF ARTICLE 600 OF THE NATIONAL ELECTRIC CODE AND/OR OTHER APPLICABLE LOCAL CODES. THIS INCLUDES PROPER GROUNDING AND BONDING OF THE SIGN.



NOT TO SCALE