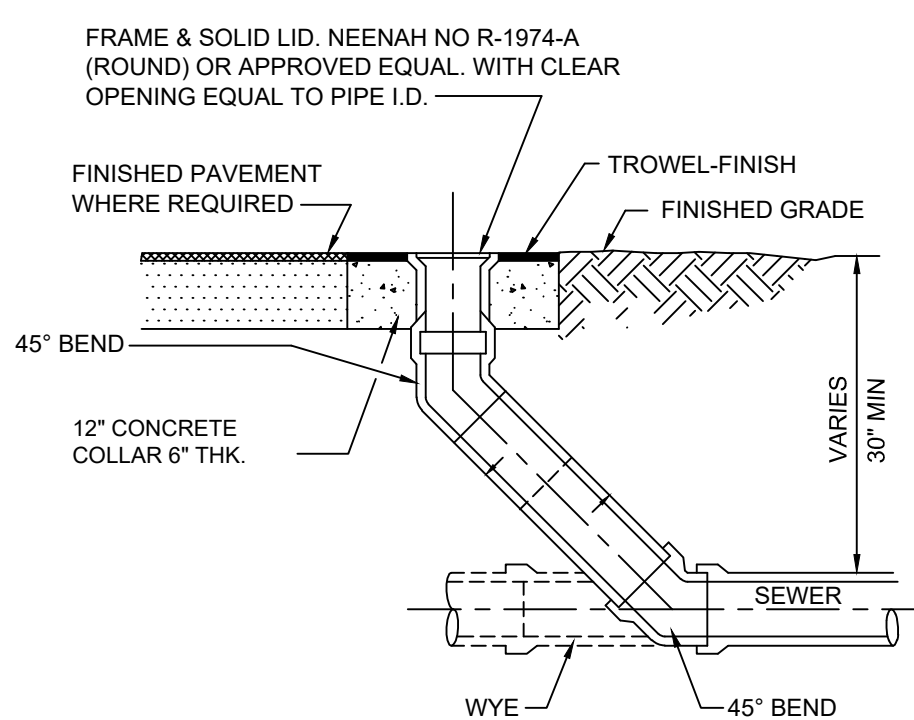


CONTRACTOR CONSTRUCTION NOTES

1. CONTRACTOR SHALL VERIFY LOCATION, SIZE AND ELEVATION OF EXISTING WATER MAIN PRIOR TO CONSTRUCTION. NOTIFY ENGINEER OF ANY DISCREPANCIES. ALL WATER CONNECTIONS SHALL BE COORDINATED WITH PROPERTY UTILITY COMPANY PRIOR TO CONSTRUCTION. CONSTRUCTION SHALL CONFORM TO LOCAL PLUMBING CODE.
2. CONTRACTOR SHALL COORDINATE CONNECTION POINT, SERVICE SIZE AND TRANSFORMER LOCATION WITH ELECTRICAL SERVICE CO. PRIOR TO CONSTRUCTION. METER BASES CANNOT BE MOUNTED ON TRANSFORMERS. CURRENT TRANSFORMERS FOR SERVICES ABOVE 400 AMPERES CAN BE INSTALLED ON POLES, BUILDINGS, OR INSIDE TRANSFORMERS. WILSON ENERGY WILL SPOT WATER TRANSFORMER AND METER LOCATIONS. PLEASE NOTIFY WILSON ENERGY OF EXACT ELECTRICAL REQUIREMENTS SUCH AS TOTAL CONNECTED LOAD AND VOLTGE REQUIREMENTS. ANY WIRE OR SHRUBBERY THAT INTERFERES WITH WILSON ENERGY ELECTRICAL LINES IN THE FUTURE WILL BE REMOVED.
3. CONTRACTOR SHALL VERIFY LOCATION, SIZE AND INVERT OF EXISTING SANITARY SEWER PRIOR TO CONSTRUCTION AND COORDINATE WITH PROPER UTILITY COMPANY PRIOR TO CONSTRUCTION. NOTIFY ENGINEER OF ANY DISCREPANCIES. CONTRACTOR SHALL INSPECT THE EXISTING LINE TO ENSURE IT IS NOT DAMAGED AND NOTIFY ENGINEER OF UNSATISFACTORY CONDITIONS. CONSTRUCTION SHALL CONFORM TO LOCAL PLUMBING CODE.
4. CONTRACTOR SHALL COORDINATE WITH GAS SERVICE PROVIDER PRIOR TO CONSTRUCTION. EXPOSURES TO BE MADE ON GAS SERVICE PRIOR TO CONSTRUCTION AND DEPTH PRIOR TO CONSTRUCTION. CONSTRUCTION SHALL CONFORM TO LOCAL GAS AND PLUMBING CODE.
5. CONTRACTOR SHALL COORDINATE CONNECTION POINT AND SERVICE SIZE WITH APPROPRIATE SERVICE PROVIDER PRIOR TO CONSTRUCTION. FOR BOTH TELEPHONE AND CABLE TV SERVICE.



1 CLEANOUT DETAIL

NOT FOR CONSTRUCTION - CITY REVIEW SET

SITE NUMBER:	12802
BASE MDL: SMART 55 - NARROW	2017
ASSET TYPE:	FRAN
CLASSIFICATION:	NEW
OWNER:	NPCQB
BASE VERSION:	2017
UPGRADE CLASSIFICATION:	
	NEW BUILD
PROJECT YEAR:	2019
FURNITURE PACKAGE:	2016 V3
DRAWING RELEASE	SPRING 2018

linear!
Marc Brundige,
Architect
8951 CYPRESS WATERS BLVD., STE 130
DALLAS, TX 75019
PHONE: 972.929.9226
FAX: 972.929.9061



4200 W. 115TH ST. STE. 200
LEAWOOD, KANSAS
66211
OFFICE: (913) 327-3120
CELL: (913) 544-3421

PROJECT TYPE: NEW
SMART 55 - NARROW

MICHAEL E. NEIKIRK PE
Civil Engineer
306 North Market Street Ste. 101
Mt. Carmel, IL 62863
Phone: (618) 263-4100

Wendy's®
#12533 (NPCQB#6042)
7711 E MISSOURI 291 HWY
LEE'S SUMMIT, MO 64063

[illegible]

ISSUE DATE: 09-05-19

PROJECT NUMBER: _____

DRAWN BY: TJL RM

CHECKED BY: MEN. T.



SHEET NAME

UTILITY PLAN

SHEET NUMBER

C4



Missouri One Call System, Inc. is open 7 days a week, 24 hours a day to process locate requests or address questions regarding a locate request. The toll free number is 1-800-344-7483 or 811 (the National three digit call before you dig phone number).

