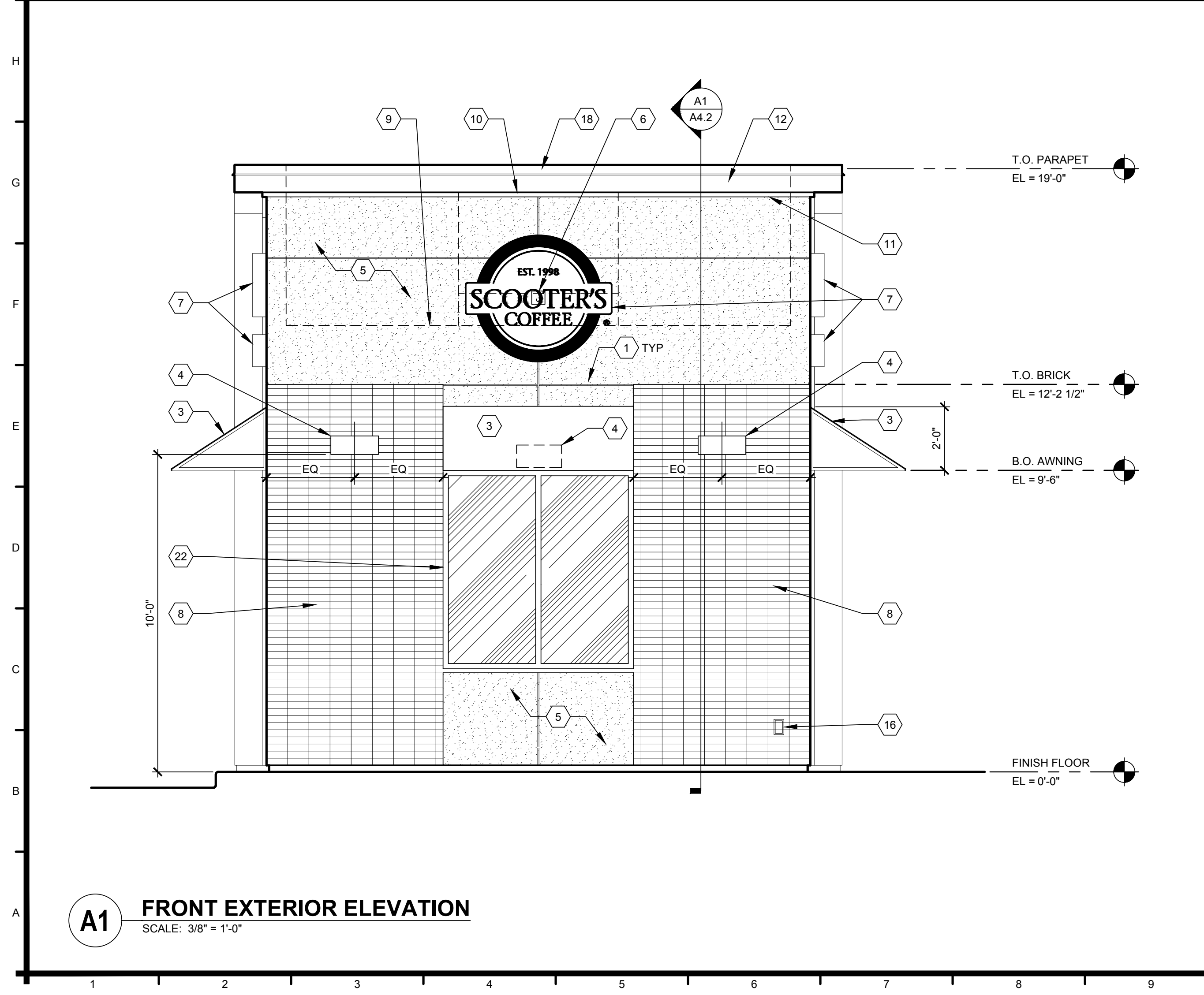


J1 SIDE EXTERIOR ELEVATION
SCALE: 3/8" = 1'-0"

- ### SHEET KEYNOTES
- EIFS AESTHETIC REVEAL
 - 36" x 48" SHADOW BOX DISPLAY CASE.
 - AWNING, COLOR: RED BY OWNER.
 - WALL MOUNTED LIGHT FIXTURE, SEE ELECTRICAL.
 - EXTERIOR INSULATION FINISH SYSTEM, COLOR: SKYLINE STEEL SW1015.
 - CONTRACTOR SHALL PROVIDE POWER FOR EXTERIOR SIGNAGE WIREWAY ON PARAPET WALL INTERIOR
 - SIGNAGE UNDER SEPARATE PERMIT.
 - THIN BRICK VENEER, ENDICOTT, SMOOTH FACE, COLOR: MANGANESE IRONSPOT.
 - ROOF LINE BEYOND
 - ROOF TOP UNIT BEYOND
 - LED LIGHT BAND
 - METAL FASCIA/SOFFIT AND REAR ELEVATION ACCENTS - BLACK
 - SES PANEL, SEE ELECTRICAL
 - MAILBOX, BY OWNER
 - DOOR BELL
 - ELECTRICAL OUTLETS, SEE ELECTRICAL.
 - FREEZE PROOF WALL HYDRANT, SEE PLUMBING.
 - METAL CAP FLASHING, BLACK
 - METAL THRU-WALL SCUPPER, CONDUCTOR HEAD & DOWNSPOUT, BLACK. SEE G12/A6.0
 - METAL THRU-WALL OVERFLOW SCUPPER. SEE M12/A6.0
 - ALUMINUM PICK-UP WINDOW. COLOR: BLACK
 - ALUMINUM STOREFRONT WINDOW. COLOR: BLACK

- ### LEGEND
- xxx - DOOR NUMBER, SEE A5.0
 - x - WINDOW TYPE, SEE A5.0
 - SECTION
 - # - SECTION NUMBER
 - xxxx - SHEET SECTION SHOWN ON
SIM = SIMILAR, OH = OPPOSITE HAND



A1 FRONT EXTERIOR ELEVATION
SCALE: 3/8" = 1'-0"

WARMAN ARCHITECTURE+DESIGN
1735 SWIFT AVE.
NORTH KANSAS CITY, MISSOURI 64116
V. 816.474.2233 F. 816.474.1051



KATHELEEN ANN WARMAN - ARCHITECT
MO # A 5819

Scooter's Coffeehouse Remodel
855 NE Woods Chapel Rd
Lee's Summit, MO

Loving Cup, LLC
dba Scooter's Coffee
200 NE Woods Chapel Rd
Lee's Summit, MO 64064

REVISIONS	BY	DATE	SOURCE

DATE: 09.08.19
DESIGNED BY: KAW
DRAWN BY: JDE
APPROVED BY: KAW

SHEET NUMBER
A2.1
JOB NUMBER
5448-19

EXTERIOR ELEVATIONS

Missouri State Certificate of Authority #ARC 000745