

## DESCRIPTION

The Halo Surface LED Downlight (SLD) incorporates WaveStream™ technology to create an ultra-low profile surface mounting luminaire with the performance and look of a traditional downlight. SLD6 is designed for installation in many 3-1/2" and 4" square, octagon or round junction boxes. And may also retrofit in 5" and 6" IC and Non-IC recessed housings.\* Suitable for residential or commercial installations. Ideal for closets, storage areas, attics and basements. Compliant with NFPA® 70, NEC® Section 410.16 (A)(3) and 410.16 (C)(5).

## SPECIFICATION FEATURES

### CONSTRUCTION

- Die cast aluminum trim ring, and die formed aluminum frame

### OPTICS

- WaveStream™ technology provides uniform luminance from a low profile flat lens
- AccuAim™ optics provide directional control for the "cone-of-light" beam distribution of a traditional downlight.
- Precision molded lens features high transmission polymer with UV stabilized protecting film

### DESIGNER TRIMS

#### Accessories (sold separately)

SLD designer trims are accessory rings that attach to the SLD for a permanent finish.\* Refer to SLD accessories specification sheet for details.

- White (Paintable)
- Satin Nickel
- Tuscan Bronze

\*SLD accessory trims attach with permanent adhesion and are not interchangeable after installation.

### ELECTRICAL JUNCTION BOX MOUNTING

- SLD may be used in compatible electrical junction boxes in direct contact with insulation including spray foam insulation
- Suitable for installation in many 3-1/2" and 4" square, octagon, and round electrical junction boxes

**Note:** Driver consumes 3 cubic inches of junction box

- Installer must ensure compatibility of fit, wiring and proper mounting in the electrical junction box.

This includes all applicable national and local electrical and building codes.

- Proprietary Slot-N-Lock quick installation system for junction box installation
- T-bracket with Slot-N-Lock mounting tabs included

### RECESSED HOUSING MOUNTING

- May be installed in IC recessed housings in direct contact with insulation
- Note:** Not for use in recessed housings in direct contact with spray foam insulation. Refer to NEMA LSD 57-2013

#### Torsion Spring 5" & 6"

- Optional precision formed torsion spring bracket kit is included
- The torsion springs adjust on the frame to fit 5" or 6" compatible housings

#### Friction Blade 5" & 6"

- Optional precision formed friction blades included
- For retrofit in 5" and 6" housings without torsion spring mounting tabs
- Friction blade design allows the SLD to be installed in any position within the housing aperture (360 degrees)

### LED

- Linear LED arrays are integrated in trim perimeter
- Color Temperature: 2700K, 3000K, 3500K, 4000K
- CRI options: 80 and 90
  - 90 CRI can be used for California Title 24 compliance/ certified to Title 20
  - 80 CRI can be used to comply with California Title 24 Non-Residential Lighting Controls as a LED luminaire.

### WARRANTY

Eaton provides a five year limited warranty on the SLD LED

| Catalog #   |  | Type |
|-------------|--|------|
| Project     |  |      |
| Comments    |  | Date |
| Prepared by |  |      |

### LED CHROMATICITY

- A tight chromaticity specification ensures LED color uniformity, sustainable Color Rendering Index (CRI) and Correlated Color Temperature (CCT) over the useful life of the LED
- LED chromaticity of 3 SDCM exceeds ENERGY STAR® color standards per ANSI.
- 90 CRI model features high color performance with R9 greater than 50
- Every Halo LED is quality tested, measured, and serialized in a permanent record to register lumens, wattage, CRI and CCT.
- Halo LED serialized testing and measurement ensures color and lumen consistency on a per-unit basis, and validates long-term product consistency over time

### ELECTRICAL CONNECTIONS Junction Box

- Compatible with 3-1/2" x 2" and 4" x 1-1/2" deep round, square and octagon boxes (2-1/8" deep boxes recommended)
- Supply Wire Adapter with LED quick connector included

### Recessed Housings

- LED connector is compatible with Halo 5" H550 Series and 6" H750 Series LED Housings
- LED Connector meets California Title-24 high-efficacy luminaire standard as a non-screw base
- The included E26 Edison screw-base adapter provides capability for retrofit\*
- LED connector is a non-screwbase luminaire disconnect for tool-less installation



## SLD 1200 Series SLD6128xxWH

80CRI  
2700K, 3000K, 3500K,  
and 4000K

## SLD6129xxWH

90CRI  
2700K, 3000K, 3500K,  
and 4000K

### 6" Surface LED Downlight

## High Lumen 1200 Series

Suitable for ceiling or wall electrical junction boxes

Suitable for 5" & 6" recessed housing retrofit (IC, Non-IC & AIR-TITE™)

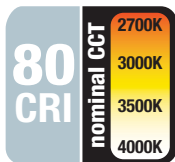
## ENERGY DATA

|                           | 80 CRI      | 90 CRI   |
|---------------------------|-------------|----------|
| Lumens (4000K models)     | 1215        | 1000     |
| Input Voltage             | 120V        | 120V     |
| Frequency                 | 50/60 Hz    | 50/60 Hz |
| Input Current             | 0.12 A      | 0.12 A   |
| Input Power               | 14.8 W      | 14.8 W   |
| Efficiency (4000K models) | 82 lm/W     | 68 lm/W  |
| THD                       | ≤ 20%       |          |
| Power Factor              | ≥ 0.90      |          |
| T Ambient                 | -30 - +40°C |          |
| Sound Rating              | Class A     |          |

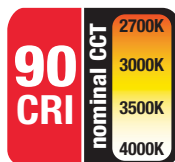
## NOMENCLATURE

### SLD 612 8 30 WH

612 = 6" SLD 1200 Series  
8 = >80 CRI  
30 = 3000K  
WH = Matte White



Refer to ENERGY STAR® Certified Products List.



Refer to ENERGY STAR® Qualified Products List.  
Can be used to comply with California Title 24 High Efficacy requirements.  
Certified to California Appliance Efficiency Database under JA8.  
Indoor LED nominal CCT of 4000K or less.

**LED DRIVER**

- Driver is a 120V input, high efficiency, dimmable electronic power supply providing DC power to the LED arrays
- Driver features high power factor, low THD, and has integral thermal protection in the event of over temperature or internal failure
- Driver is replaceable if it should be required

**DIMMING**

- Designed for continuous dimming capability to nominally 5% with many 120V Leading Edge (LE) and Trailing Edge (TE) phase control dimmers. Dimming to 5% is best assured using dimmers with low end trim adjustment. Consult dimmer manufacturer for compatibility and conditions of use. (Note some dimmers require a neutral in the wallbox.)

**COMPLIANCE**

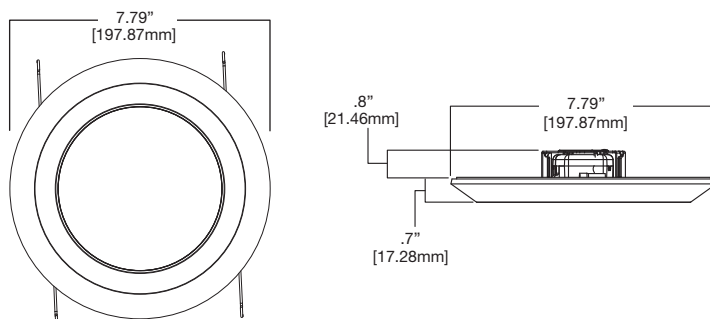
- cULus Listed ceiling and wall
- cULus Damp Location listed ceiling and wall
- cULus Wet Location Listed, ceiling only (shower rated)
- Suitable for use in closets, compliant with NFPA® 70, NEC® Section 410.16 (A)(3) and 410.16 (C)(5)
- SLD may be used in compatible electrical junction boxes in direct contact with insulation including spray foam insulation
- May be installed in IC recessed housings in direct contact with insulation (Not for use in recessed housings in direct contact with spray foam insulation. Refer to NEMA LSD 57-2013)
- UL Classified when used in retrofit with listed housings (See Housing Compatibility)
- EMI/RFI: meets FCC 47CFR Part 15 Class B limits, and is suitable for use in residential and commercial installations
- Airtight certified per ASTM E283 (not exceeding 2.0 CFM under 57 Pascals pressure difference)
- 90 CRI: Can be used to comply with California Title 24 High Efficacy requirements.
- Can be used for International Energy Conservation Code (IECC) and Washington State Energy Code high efficiency luminaire compliance
- ENERGY STAR® certified luminaire - consult ENERGY STAR® Certified Product List
- Contains no mercury or lead and RoHS compliant.
- Photometric testing in accordance with IES LM-79
- Lumen maintenance projections in accordance with IES LM-80 and TM-21

**SLD 1200 Series****SLD6128xxWH**

80CRI

**2700K, 3000K, 3500K,  
and 4000K****SLD6129xxWH**

90CRI

**2700K, 3000K, 3500K,  
and 4000K****6" Surface LED  
Downlight****High Lumen 1200 Series****Suitable for  
ceiling or wall  
electrical junction boxes****Suitable for  
5" & 6" recessed  
housing retrofit  
(IC, Non-IC & AIR-TITE™)****DIMENSIONS****ORDERING INFORMATION**

SAMPLE NUMBER: SLD612927WH SLD6TRMSN

Junction Box Installation: Order junction box separately, as supplied by others, to complete installation.

Recessed Installation: Order Halo recessed housing separately to complete installation.

| Models   | Color Rendering Index | Color Temperature (CCT)                      | Finish   | Accessories  |
|--|-----------------------|--|----------|--|
| SLD612= 6" Surface LED Downlight, 120V 1200 Series   | 8=80 CRI<br>9=90 CRI  | 27=2700K<br>30=3000K<br>35=3500K<br>40=4000K | WH=White | <b>Designer Trims</b><br>Fit over the SLD for a designer finish<br>SLD6TRMSN=6" SLD Satin Nickel<br>SLD6TRMTBZ=6" SLD Tuscan Bronze<br>SLD6TRMWH=6" SLD White (paintable)<br>*SLD accessory trims attach with permanent adhesion and are not interchangeable after installation<br><br><b>J-Box Spacer Extension Ring</b><br>Add 15/16" depth when SLD driver cannot fit into installed junction box<br>SLD6EXT=6" Surface LED J-Box Extender, 9.5" O.D.<br><br><b>RAD Adapters</b><br>When junction box is mounted flat on a ceiling or beam surface (not recessed in ceiling)<br>SLD6RAD=6" SLD Round Surface J-Box Adapter, 7.92" O.D. (for 4-inch round or octagon junction boxes.)<br>SLD6SADPLT=6" SLD Square Surface J-Box Adapter Plate (For 4-inch square junction boxes, use with SLD6RAD.)<br><br><b>Spare Parts</b><br>SLD6ACCKIT=6" Accessory Parts Replacement Kit (Screwbase adapter, torsion springs, friction blades)<br>SLD6BRKT=6" Junction Box Bracket & Screws<br><br>Refer to SLD Accessories specification sheet for further information. |
| <b>California non-E26 Models</b><br>SLD612927WH-CA<br>SLD612930WH-CA<br>SLD612935WH-CA<br>SLD612940WH-CA |                       |  |          |  |

**HOUSING COMPATIBILITY**

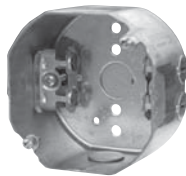
The SLD6 is UL Listed in Halo and All-Pro recessed housings, and is UL Classified for use with any 5 or 6 inch diameter recessed housing constructed of steel or aluminum with an internal volume that exceeds 107.9 in<sup>3</sup> in addition to those noted below.

Note: Some other's housings require installation with included friction clips.

| <b>Compatible Halo LED Housings with LED luminaire connector (high-efficacy compliant)</b> |                          |   |
|--|--------------------------|---|
| <b>HALO<br/>LED</b>  | <b>Recessed Can Size</b> | <b>Catalog Number</b>   |
|  | <b>5"</b>                | H550ICAT, H550RICAT, E550ICAT, E550RICAT  |
|  | <b>6"</b>                | H750ICAT, H750RICAT, H750T, H750RINTD010, H750TCP, H2750ICAT, H2750RICAT, E750ICAT, E750RICAT   |
|  |                          |   |
| <b>Halo LED Retrofit Enclosures</b>  |                          |   |
| <b>HALO</b>  | <b>6"</b>                | ML7BXRFK, ML7E26RFK   |
|  |                          |   |
| <b>Compatible Halo Incandescent E26 Screwbase Housings</b>                                 |                          |   |
| <b>HALO</b>  | <b>5"</b>                | H5ICAT, H5RICAT, H5ICATNB, H5T, H5RT, H25ICAT, H25ICATNB, E5TAT, E5RTAT, H5TNB, E5TATNB, E5ICAT, E5RICAT, E5ICATNB  |
|  | <b>6"</b>                | H7ICAT, H7RICAT, H7ICT, H7RICT, H7ICATNB, H7ICTNB, H7T, H7RT, H7TNB, H7TCP, H7UICAT, H7UICAT, H27ICAT, H27RICAT, H27T, H27RT, E7ICAT, E7RICAT, E27ICAT, E27RICAT, E7ICATNB, E7TAT, E7RTAT, E7TATNB, E27TAT, E27RTAT |
|  |                          |   |

**COMPATIBLE WITH EATON'S CROUSE-HINDS JUNCTION BOXES**

TP316  
for non-metallic cable  
4" x 4" x 2-1/8"  
(102mm x 102mm x 54mm)

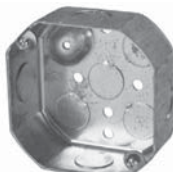


TP317  
for metal clad cable  
4" x 4" x 2-1/8"  
(102mm x 102mm x 54mm)

- TP316 - for non-metallic cable
- TP317 - for metal clad cable
- UL Listed
- Refer to [www.crouse-hinds.com](http://www.crouse-hinds.com)

**COMPATIBLE WITH MANY OTHER JUNCTION BOXES\***

4" octagon light fixture/fan  
steel box  
4" x 4" x 2-1/8"  
(102mm x 102mm x 54mm)



4" octagon steel box  
4" x 4" x 1-1/2"  
(102mm x 102mm x 38mm)



4" square deep steel box  
4" x 4" x 2-1/8"  
(102mm x 102mm x 54mm)



4" square standard  
steel box  
4" x 4" x 1-1/2"  
(102mm x 102mm x 38mm)



4" round new work  
non-metallic light fixture/  
fan box  
4" diameter x 2-3/16"  
(102mm x 56mm)



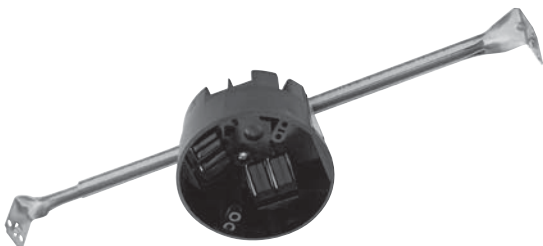
3-1/2" round new work  
non-metallic ceiling box  
3-1/2" diameter x 2-3/4"  
(89mm x 70mm)



3-1/2" round old work  
non-metallic box  
4-1/4" O.D. flange, 3-1/2" I.D. x 2-5/8"  
(108mm O.D., 89mm I.D. x 67mm)



4" round surface mount box  
4" diameter x 1-1/2"  
(102mm x 38mm)  
Requires SLD6RAD adapter



4" round new work non-metallic box  
with hanger bar assembly  
4" diameter x 2-3/16" (102mm x 56mm)

\*This is a representative list of compatible junction boxes only. Information contained in this literature about other manufacturers' products is from published information made available by the manufacturer and is deemed to be reliable, but has not been verified. Eaton makes no specific recommendation on product selection and there are no warranties of performance or compatibility implied. Installer must determine that site conditions are suitable to allow proper installation of the SLD mounting bracket in the box.

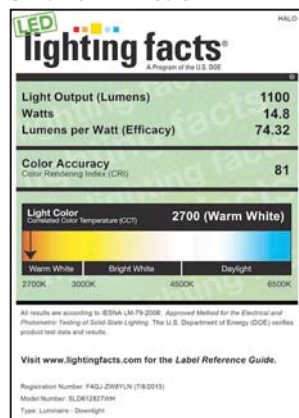
## PRODUCT DATA

| Cat No.     | CRI | CCT  | Lumens | Power (W) | LPW |
|-------------|-----|------|--------|-----------|-----|
| SLD612827WH | 80  | 2700 | 1100   | 14.8      | 74  |
| SLD612830WH | 80  | 3000 | 1150   | 14.8      | 78  |
| SLD612835WH | 80  | 3500 | 1200   | 14.8      | 81  |
| SLD612840WH | 80  | 4000 | 1215   | 14.8      | 82  |
| SLD612927WH | 92  | 2700 | 880    | 14.8      | 59  |
| SLD612930WH | 92  | 3000 | 925    | 14.8      | 63  |
| SLD612935WH | 92  | 3500 | 965    | 14.8      | 65  |
| SLD612940WH | 92  | 4000 | 1000   | 14.8      | 68  |

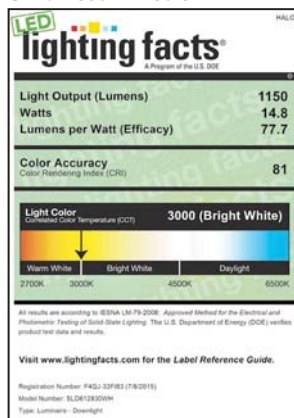
Performance values are presented as typical for the model(s) indicated. Field results may vary.

## LIGHTING FACTS®

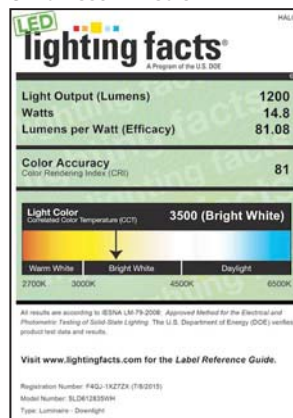
## SLD612827WH - 80 CRI



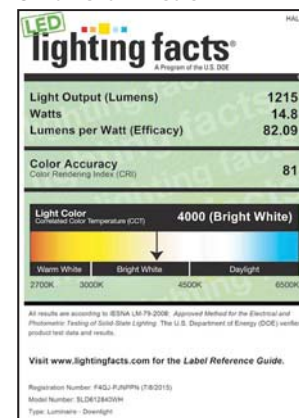
## SLD612830WH - 80 CRI



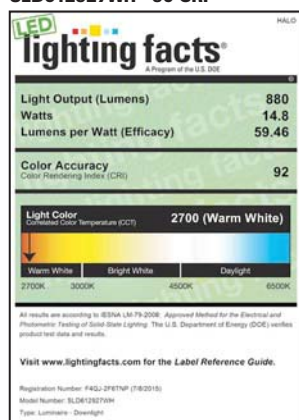
## SLD612835WH - 80 CRI



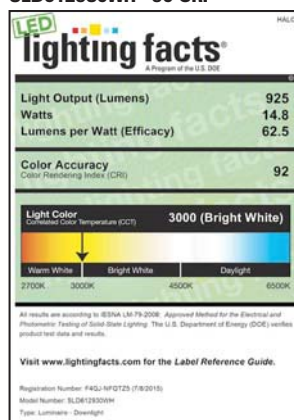
## SLD612840WH - 80 CRI



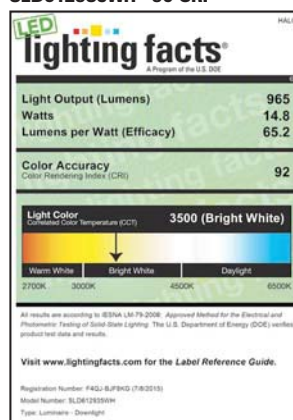
## SLD612927WH - 90 CRI



## SLD612930WH - 90 CRI



## SLD612935WH - 90 CRI



## SLD612940WH - 90 CRI

