

I-470 LOT 13A
LEE'S SUMMIT, JACKSON COUNTY, MISSOURI

Quist Engineering, Inc
 Civil Engineering for Residential & Commercial Site Development
 824 NE Columbus St.
 Lee's Summit, Missouri 64063
 Phone: (816) 550-5675
 email: nwalquist@quistengineering.com

COPYRIGHT © 2019

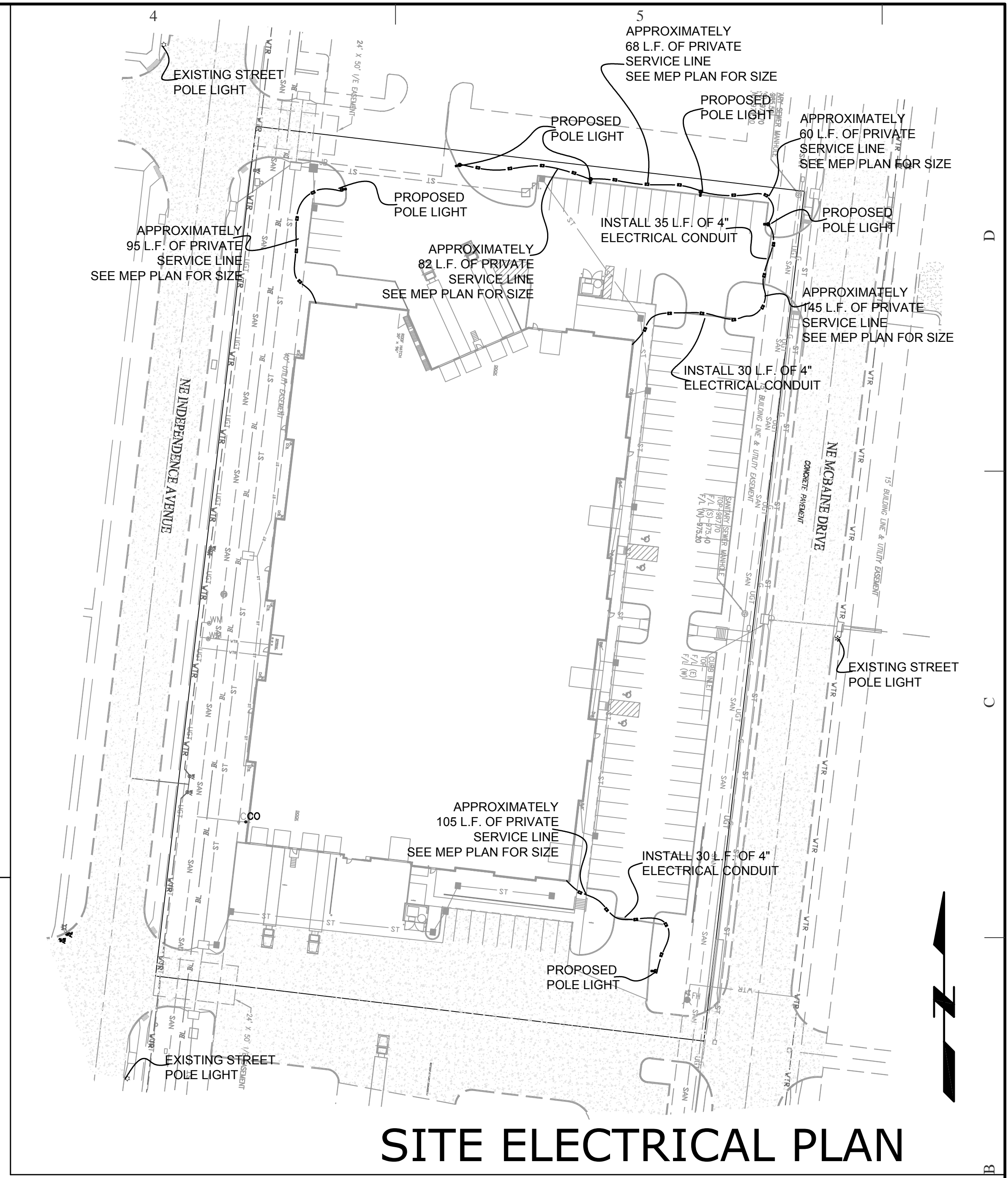
1ST ISSUE
 6-20-19

REVISIONS	
△	7-24-19
△	8-7-19
△	
△	

SHEET NO.

C700

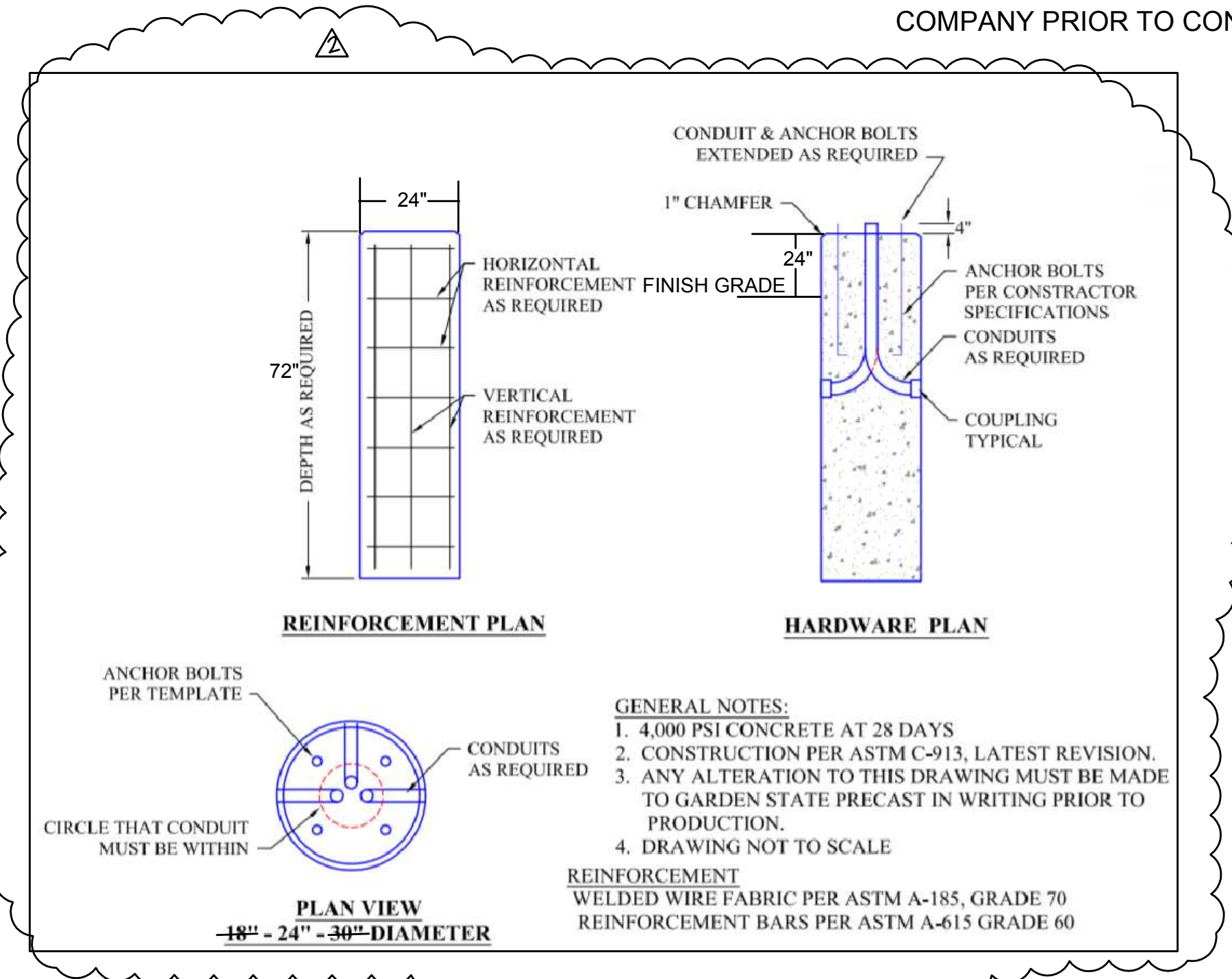
JOB NO.
 E18-337



SITE ELECTRICAL PLAN

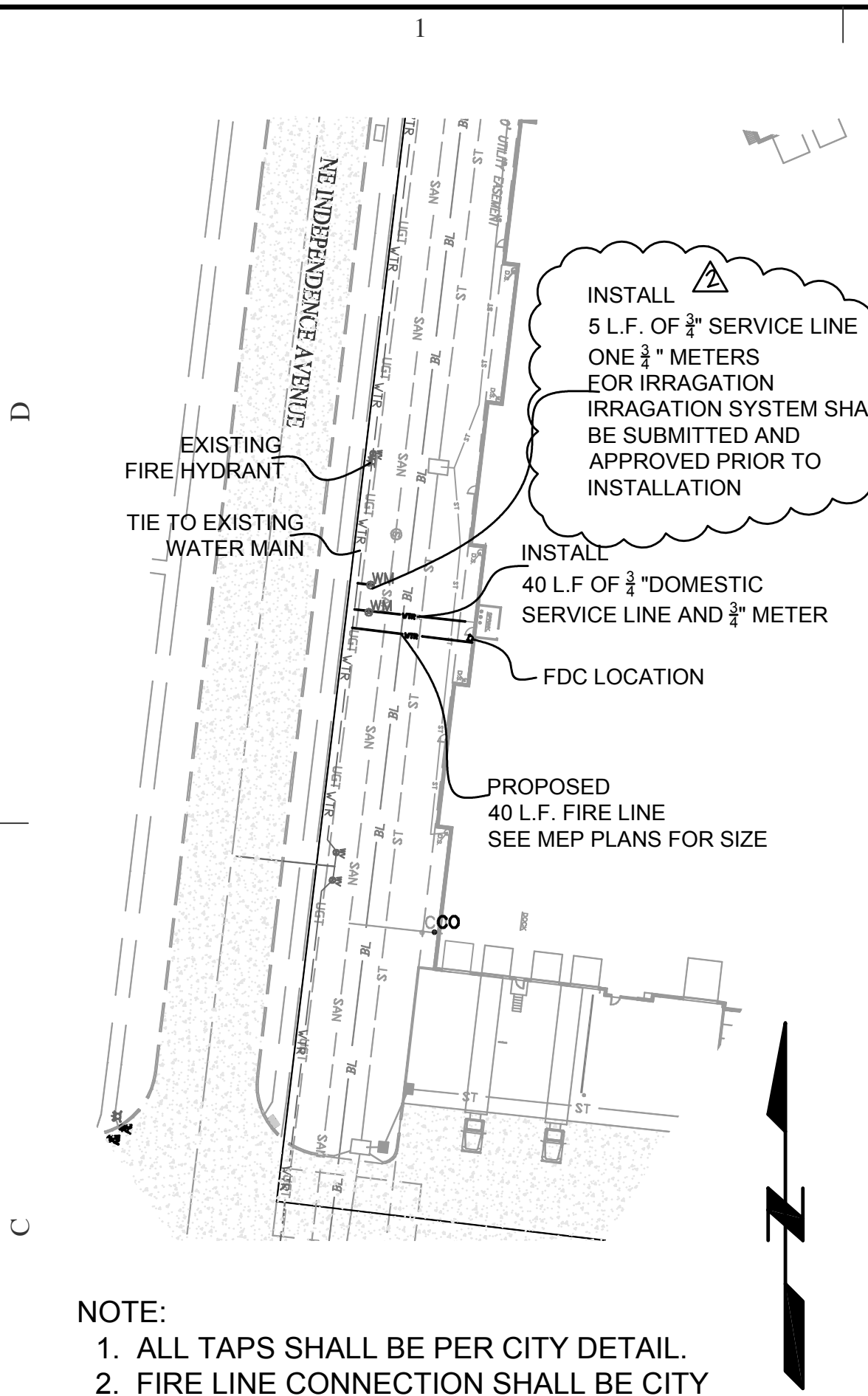
NOTE:
 1. CONTRACTOR SHALL COORDINATE WITH UTILITY COMPANY PRIOR TO CONSTRUCTION.

NOTE:
 1. ENDS OF ALL CONDUITS SHALL BE MARKED WITH 4"X4" WOOD POST.
 3. CONTRACTOR SHALL COORDINATE WITH UTILITY COMPANY PRIOR TO CONSTRUCTION.
 4. SHOP DRAWINGS FOR THE LIGHT POLES SHALL BE SUBMITTED AND APPROVED PRIOR TO CONSTRUCTION.



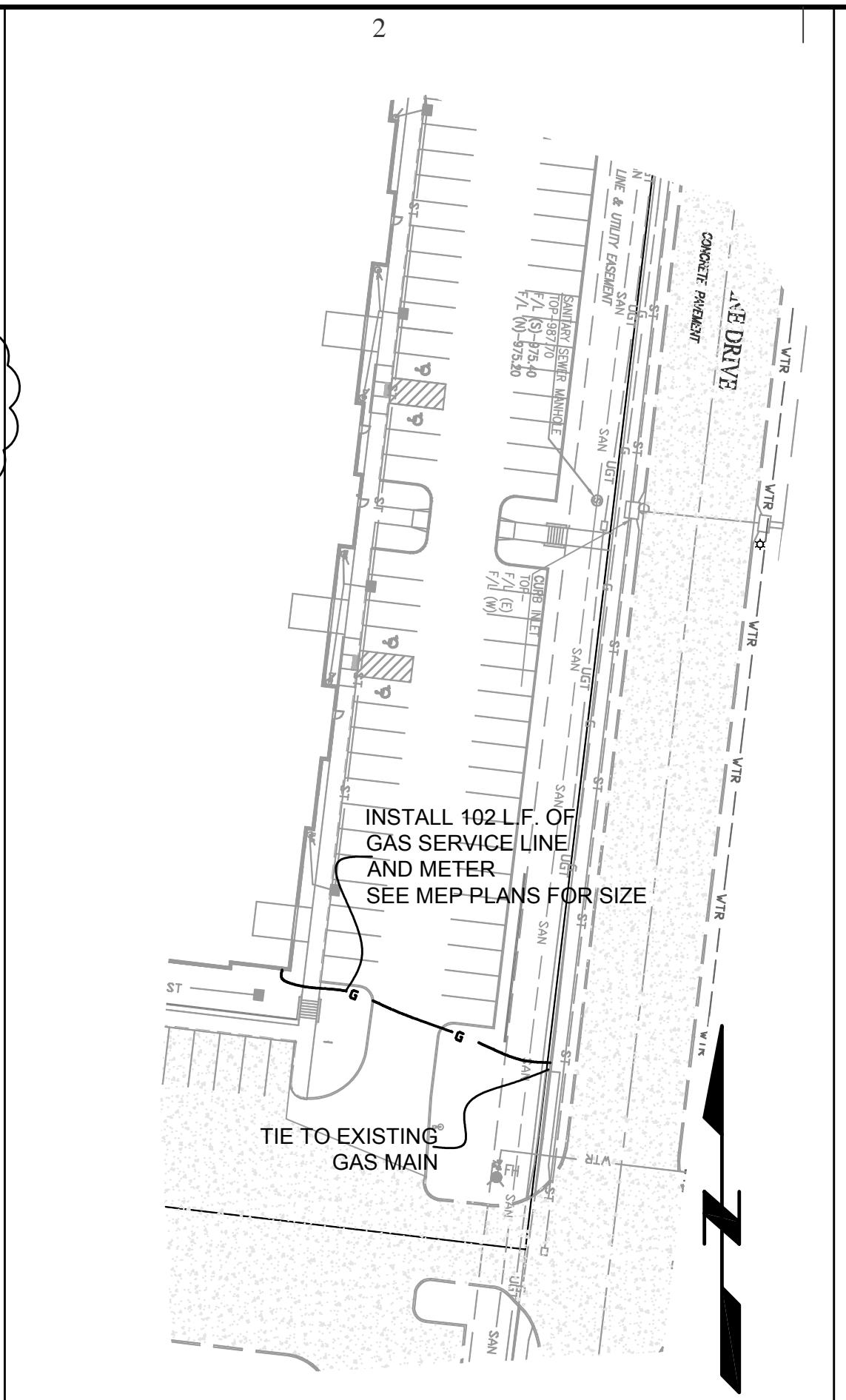
GENERAL NOTES:
 1. 4,000 PSI CONCRETE AT 28 DAYS
 2. CONSTRUCTION PER ASTM C-913, LATEST REVISION.
 3. ANY ALTERATION TO THIS DRAWING MUST BE MADE TO GARDEN STATE PRECAST IN WRITING PRIOR TO PRODUCTION.
 4. DRAWING NOT TO SCALE

REINFORCEMENT
 WELDED WIRE FABRIC PER ASTM A-185, GRADE 70
 REINFORCEMENT BARS PER ASTM A-615 GRADE 60



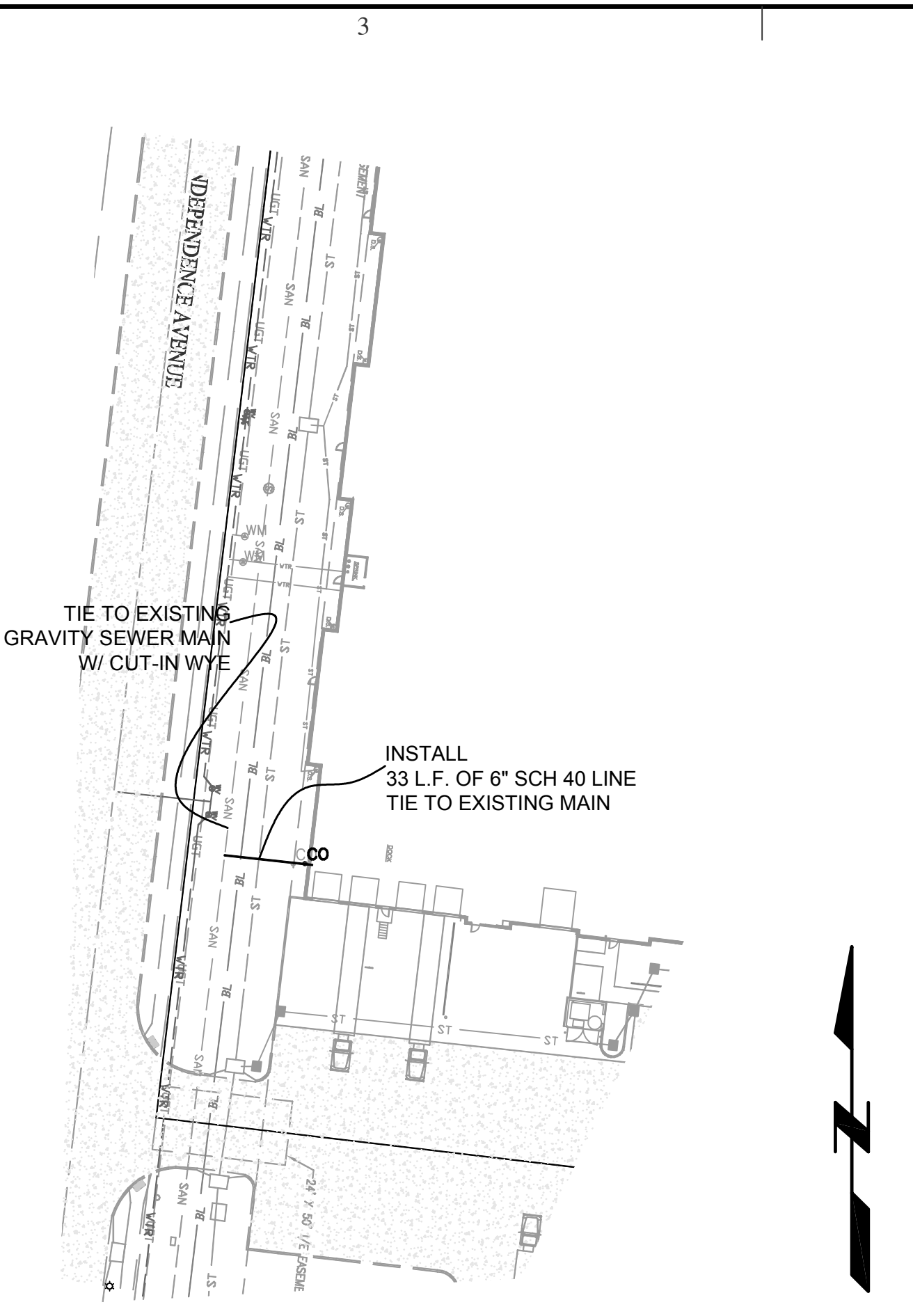
SITE WATER PLAN

NOTE:
 1. ALL TAPS SHALL BE PER CITY DETAIL.
 2. FIRE LINE CONNECTION SHALL BE CITY REQUIREMENTS.



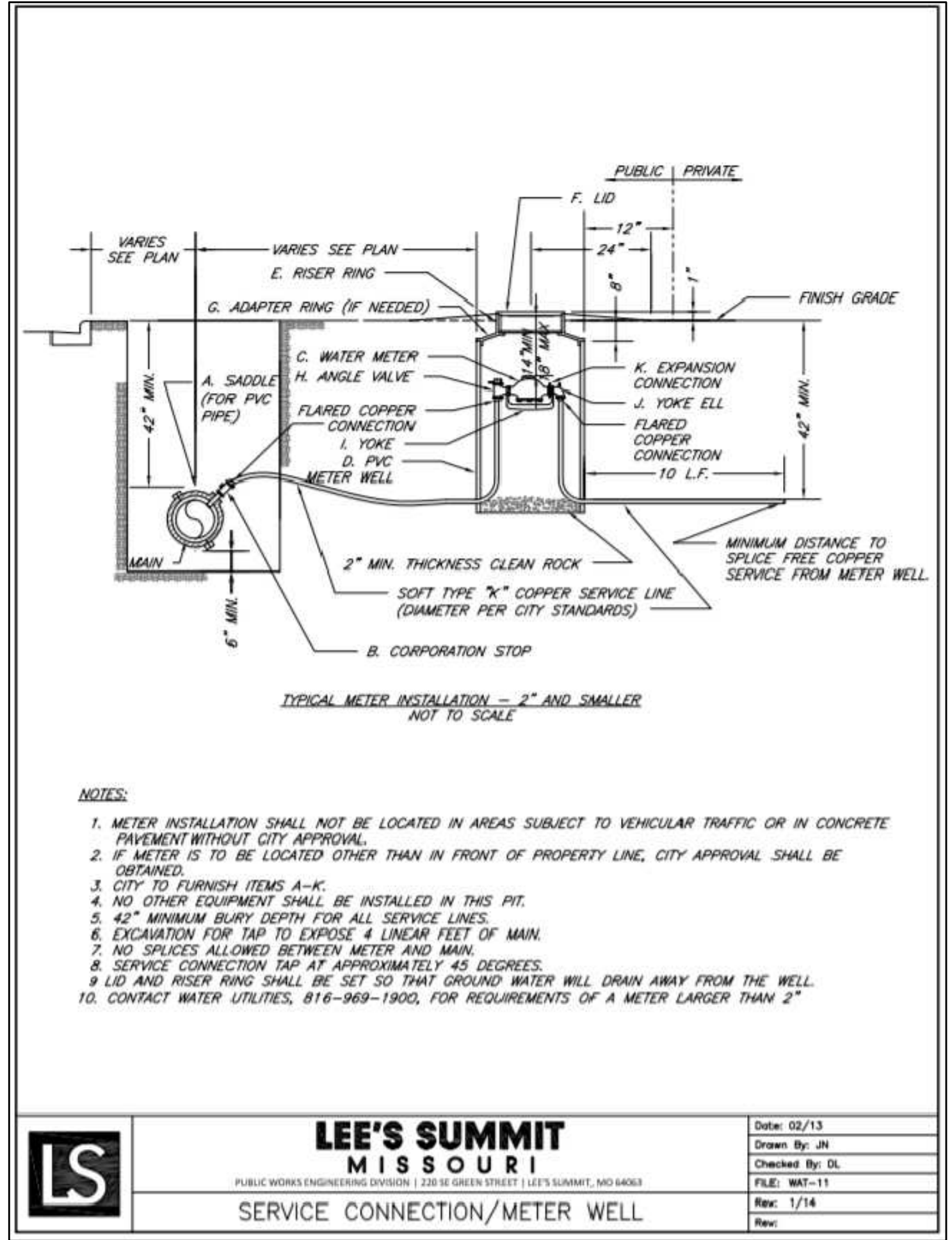
GAS SERVICE PLAN

NOTE:
 1. CONTRACTOR SHALL COORDINATE WITH UTILITY COMPANY PRIOR TO CONSTRUCTION.



SITE SEWER PLAN

1"=50'



NOTES:
 1. METER INSTALLATION SHALL NOT BE LOCATED IN AREAS SUBJECT TO VEHICULAR TRAFFIC OR IN CONCRETE PAVEMENT WITHOUT CITY APPROVAL.
 2. IF METER IS TO BE LOCATED OTHER THAN IN FRONT OF PROPERTY LINE, CITY APPROVAL SHALL BE OBTAINED.
 3. CITY TO FURNISH ITEMS A-K.
 4. NO OTHER EQUIPMENT SHALL BE INSTALLED IN THIS PIT.
 5. 42" MINIMUM BURY DEPTH FOR ALL SERVICE LINES.
 6. EXCAVATION FOR TAP TO EXPOSE 4' LINEAR FEET OF MAIN.
 7. NO SPICES ALLOWED BETWEEN METER AND MAIN.
 8. SERVICE CONNECTION TAP AT APPROXIMATELY 45 DEGREES.
 9. LID AND RISER RING SHALL BE SET SO THAT GROUND WATER WILL DRAIN AWAY FROM THE WELL.
 10. CONTACT WATER UTILITIES, 816-969-1900, FOR REQUIREMENTS OF A METER LARGER THAN 2"

LEE'S SUMMIT MISSOURI
 PUBLIC WORKS ENGINEERING DIVISION | 22816 GREEN STREET | LEE'S SUMMIT, MO 64063

Date: 02/13	Drawn By: JM
Checked By: DL	FILE: NAT-11
Rev: 1/14	Rev:

- LEGEND**
- ⊕ FIRE HYDRANT
 - ⊕ WATER VALVE
 - ⊕ WATER METER
 - ⊕ GAS METER
 - ⊕ GAS MARKER
 - MANHOLE
 - ⊕ STREET LIGHT
 - ⊕ YARD LIGHT
 - ⊕ CABLE TV PEDESTAL
 - ⊕ ELECTRIC TRANSFORMER
 - ⊕ TELEPHONE BOX
 - ⊕ POWER POLE
 - ⊕ POWER POLE W/TEL.
 - ⊕ ELECTRICAL PULL BOX
 - ⊕ POWER POLE W/STREET LIGHT
 - ⊕ ELECTRICAL PULL BOX
 - ⊕ GROUND FLOOD LIGHT
 - ⊕ TRAFFIC SIGN