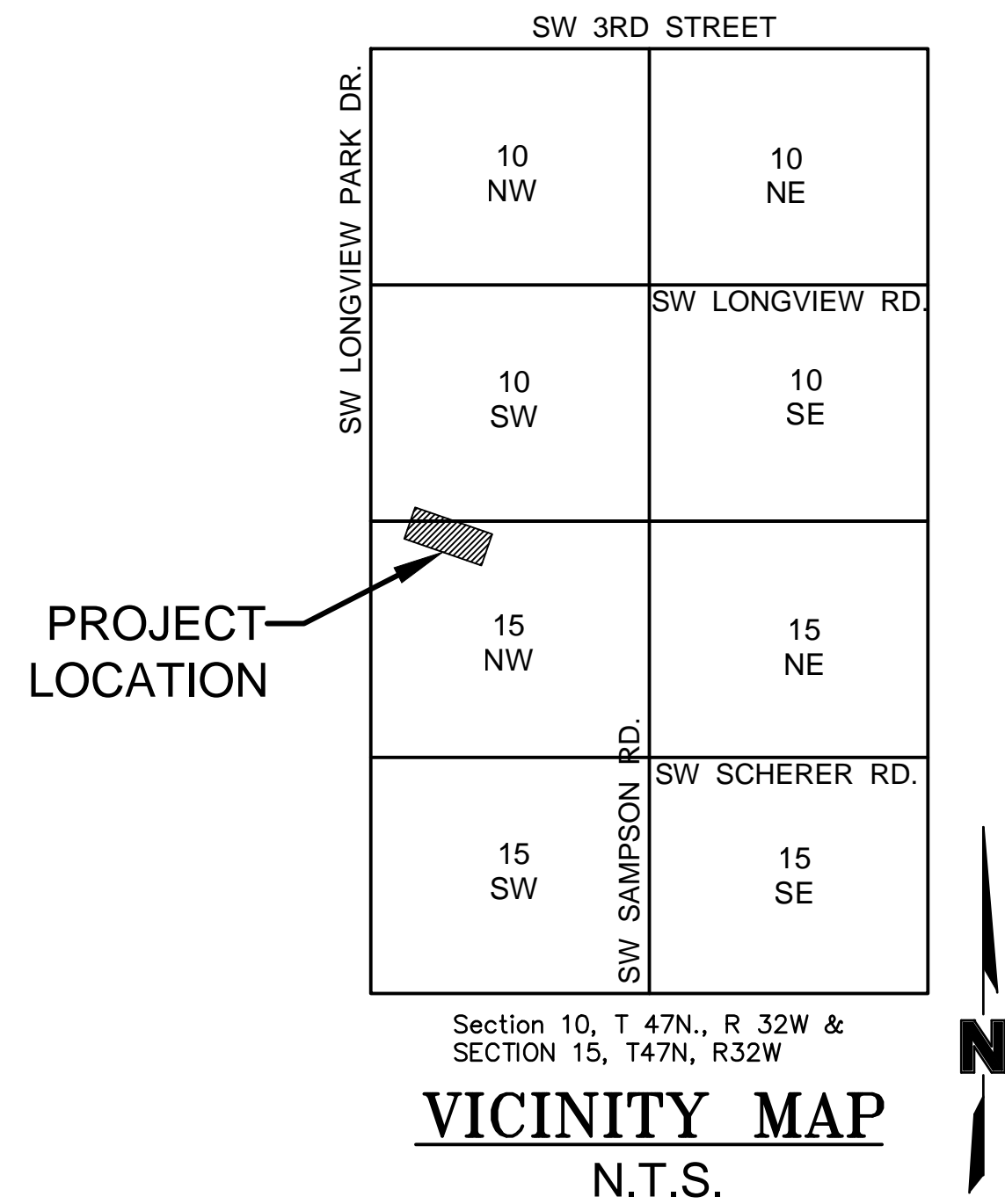
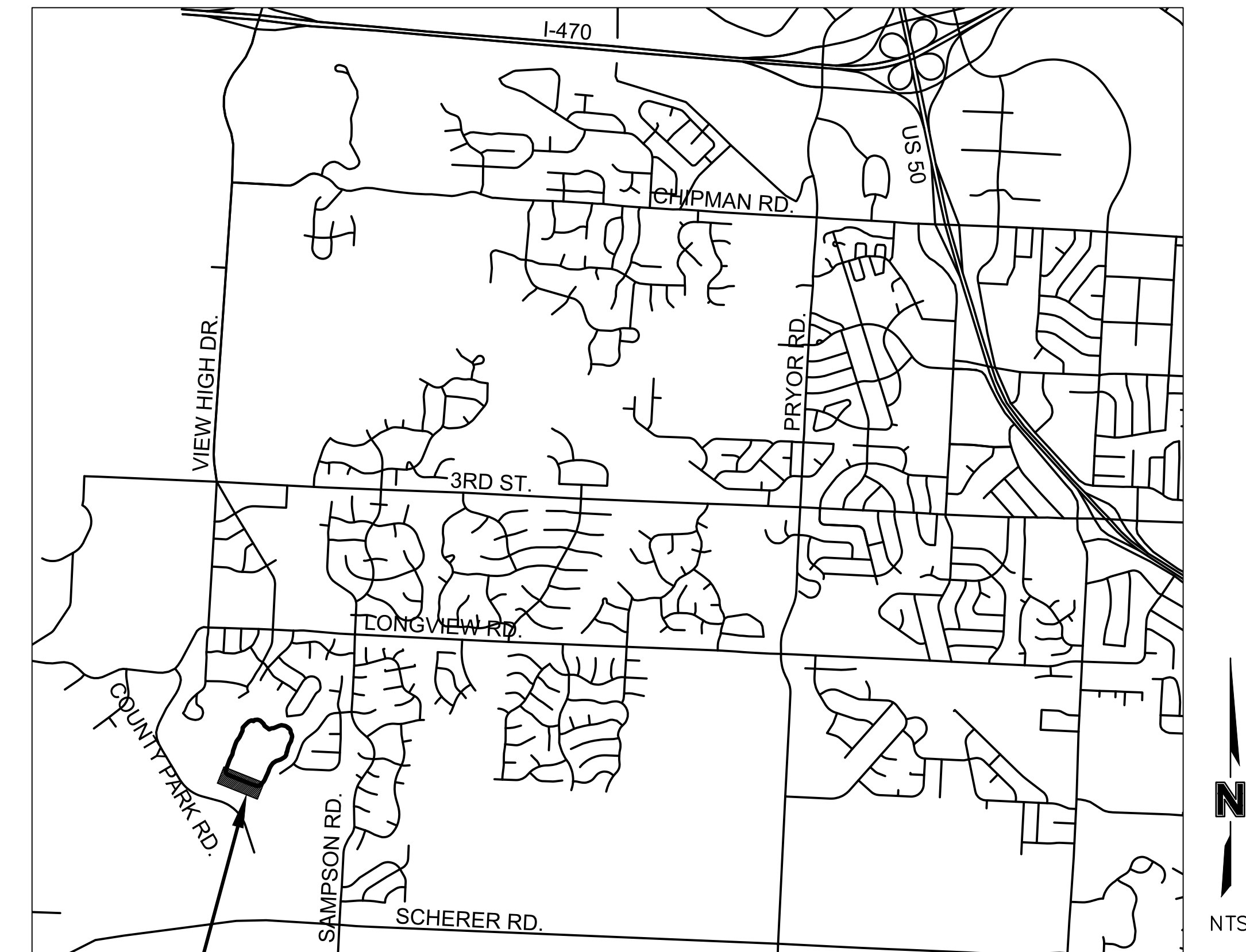


FINAL PLANS FOR OLD LONGVIEW LAKE DAM & SPILLWAY IMPROVEMENTS

LOCATED IN THE SW QTR. SECTION 10, TOWNSHIP 47N, RANGE 32W
AND THE NW QTR. SECTION 15, TOWNSHIP 47N, RANGE 32W
LEE'S SUMMIT, JACKSON COUNTY, MISSOURI



INDEX OF SHEETS	
Sheet Number	Sheet Title
1	TITLE SHEET
2	GENERAL NOTES AND SUMMARY OF QUANTITIES
3	GENERAL LAYOUT PLAN
4	DRAINAGE AREA MAP
5	DAM PLAN & PROFILE
6	DAM CROSS SECTIONS
7	DAM CROSS SECTIONS
8	DAM CROSS SECTIONS
9	DAM CROSS SECTIONS
10	CHANNEL PLAN & PROFILE
11	CHANNEL CROSS SECTIONS
12	CHANNEL CROSS SECTIONS
13	CONCRETE CHANNEL DETAIL
14	ENERGY DISSIPATION BASIN
15	OVERALL GRADING PLAN
16	LAKE SEDIMENT REMOVAL PLAN
17	SEDIMENT FOREBAY PLAN
18	SEDIMENT REMOVAL EROSION CONTROL PLAN
19	SURFACE RESTORATION AND EROSION CONTROL PLAN
20	EROSION CONTROL DETAILS
21	EROSION CONTROL DETAILS

TITLE SHEET		REV. NO.	DATE	REVISIONS DESCRIPTION	BY
OLD LONGVIEW LAKE DAM & SPILLWAY IMPROVEMENTS					
LEE'S SUMMIT, MISSOURI	2019	REVISIONS			

PREPARED & SUBMITTED BY:
OLSSON ASSOCIATES
7301 W. 133RD STREET, SUITE 200
OVERLAND PARK, KANSAS 66213

BRIAN H. LADD, P.E.

DATE _____

I CERTIFY THESE PLANS WERE PREPARED BY ME
OR UNDER MY IMMEDIATE PERSONAL SUPERVISION.

drawn by: KTF
checked by: BHL
approved by: BMJ
QA/QC by: CPJ
project no.: 017-0305
drawing no.: _____
date: 04.04.2019

SHEET
1 OF 21

The seal is circular with a serrated outer edge. The text "STATE OF MISSOURI" is curved along the top inner edge, and "PROFESSIONAL ENGINEER" is curved along the bottom inner edge. In the center, there is a bowtie symbol, the name "BRIAN H. LADD", the word "NUMBER", and the license number "PE-2014012020".

7301 West 133rd Street, Suite 200
Overland Park, KS 66213-4750
TEL 913.381.1170 www.olsson.com