

DWG: F:\2017\0001-0500\017-0305\40-Design\AutoCAD\Final Plans\Sheets\GNCV\Grading Plans - 36x24\C-ERC03_Erosion Control Phase.dwg
DATE: Apr 04, 2019 1:20pm XREFS: 00_C_XBASE 01_C_PBNDY 01_C_PUTIL 01_C_PBASE 01_C_PEROS 01_C_PBLK_70305 USER: kfulton

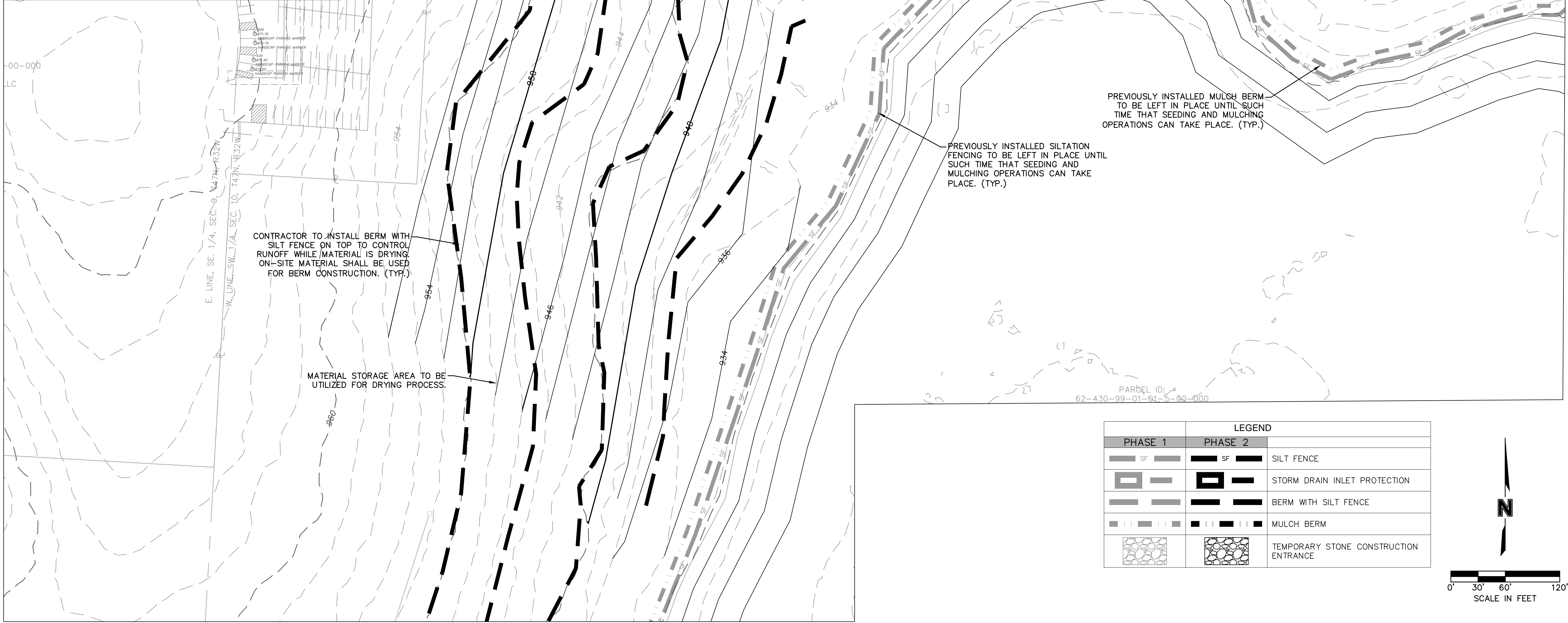
GENERAL NOTES:

SEED & MULCH NOTES:
SEEDING SHALL BE DONE BEFORE THE PROPOSED SEEDBED BECOMES ERODED, CRUSTED OVER, OR DRIED OUT AND SHALL NOT BE DONE WHEN THE GROUND IS FROZEN, OR COVERED WITH SNOW. THE SEED SHALL COMPLY WITH THE REQUIREMENTS OF THE MISSOURI SEED LAW AND THE FEDERAL SEED ACT. ALSO, IT SHALL CONTAIN NO SEED OF ANY PLANT ON THE FEDERAL NOXIOUS WEED LIST. OTHER WEED SEED SHALL NOT EXCEED ONE PERCENT BY WEIGHT OF MIX.

SEED & FERTILIZER RATE:
MIX I - RYE GRASS / BLUE GRASS -----100 LBS. PER ACRE
MIX II - TALL FESCUE / BLUE GRASS -----195 LBS. PER ACRE
LIME -----2000 LBS. PER ACRE (50 LBS. PER 1000 SQ. FT.)
FERTILIZER -----800 TO 1200 LBS. PER ACRE (25 LBS. PER 1000 SQ. FT.)

DURING THE DATES DECEMBER 15TH THROUGH MAY 31 ALL LIME, FERTILIZER, SEED, AND MULCH SHALL BE APPLIED TO FINISHED SLOPES OF DISTURBED AREAS. DURING THE MONTHS OF JUNE, JULY, OCTOBER, AND NOVEMBER 1ST THROUGH DECEMBER 15TH, LIME, FERTILIZER, SEED, AND MULCH SHALL BE APPLIED AT THE FOLLOWING RATES:
LIME - 100 % OF SPECIFIED QUANTITY
FERTILIZER - 75 % OF THE SPECIFIED QUANTITY
SEED - 50 % OF THE SPECIFIED QUANTITY
MULCH - 100 % OF THE SPECIFIED QUANTITY
MULCH SHALL BE VEGETATIVE TYPE, CEREAL STRAW FROM STALKS OF OATS, RYE, OR BARLEY, OR APPROVED EQUAL. THE STRAW SHALL BE FREE OF PROHIBITED WEED SEED AND RELATIVELY FREE OF ALL OTHER NOXIOUS AND UNDESIRABLE SEED. MULCH SHALL BE APPLIED AT THE RATE OF 2 TONS PER ACRE, (70 TO 90 LBS. PER 1000 SQ. FT.). MULCH SHALL BE EMBEDDED BY A MULCH ANCHORING TOOL OR DISK TYPE ROLLER HAVING FLAT SERRATED DISKS SPACED NOT MORE THAN 10 INCHES APART AND CLEANING SCRAPERS SHALL BE PROVIDED.

THE SITE DISTURBANCE PLANS INDICATES THE FINAL PLACEMENT OF EROSION CONTROL DEVICES. THE CONTRACTOR(S) MAY PROCEED WITH THE CONSTRUCTION PRIOR TO THE FINAL PLACEMENT OF THESE DEVICES BY PROVIDING ADDITIONAL DEVICES TO CONTROL EROSION ON THEIR ITEMS OF WORK. THESE DEVICES SHALL BE MAINTAINED UNTIL THE FINAL DEVICES ARE IN PLACE.



olsson

7301 West 133rd Street, Suite 200
Overland Park, KS 66213-4750
TEL 913.381.1170
www.olsson.com

STATE OF MISSOURI
BRIAN H. LADD
NUMBER
FE-2014012020
PROFESSIONAL ENGINEER

SEDIMENT REMOVAL EROSION CONTROL PLAN

OLD LONGVIEW LAKE
DAM & SPILLWAY IMPROVEMENTS

LEE'S SUMMIT, MISSOURI

drawn by: KTF
checked by: BHL
approved by: BML
QA/QC by: CPL
project no.: 017-0305
drawing no.:
date: 04.04.2019

2019

REVISIONS

SHEET
18 OF 21