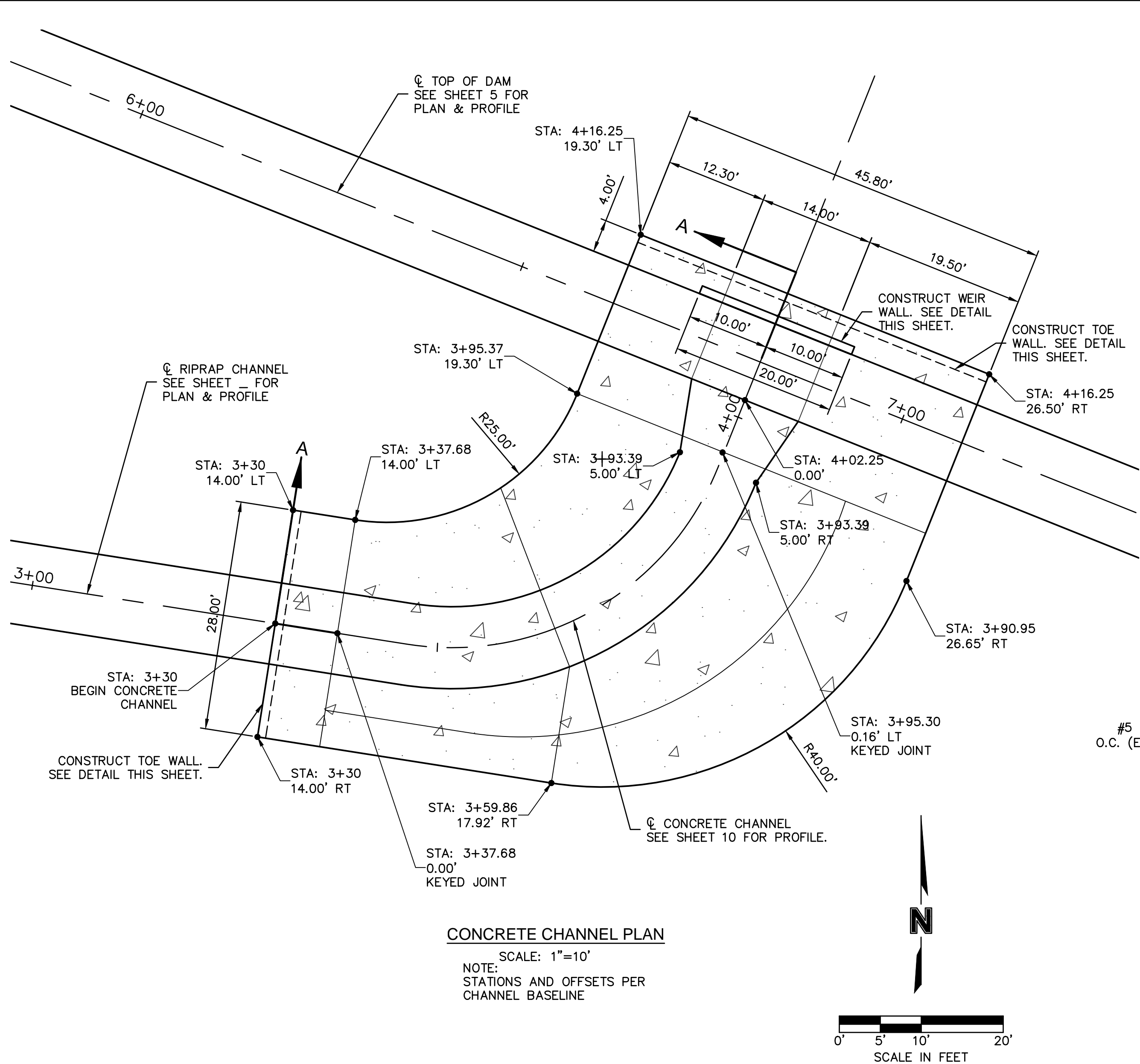


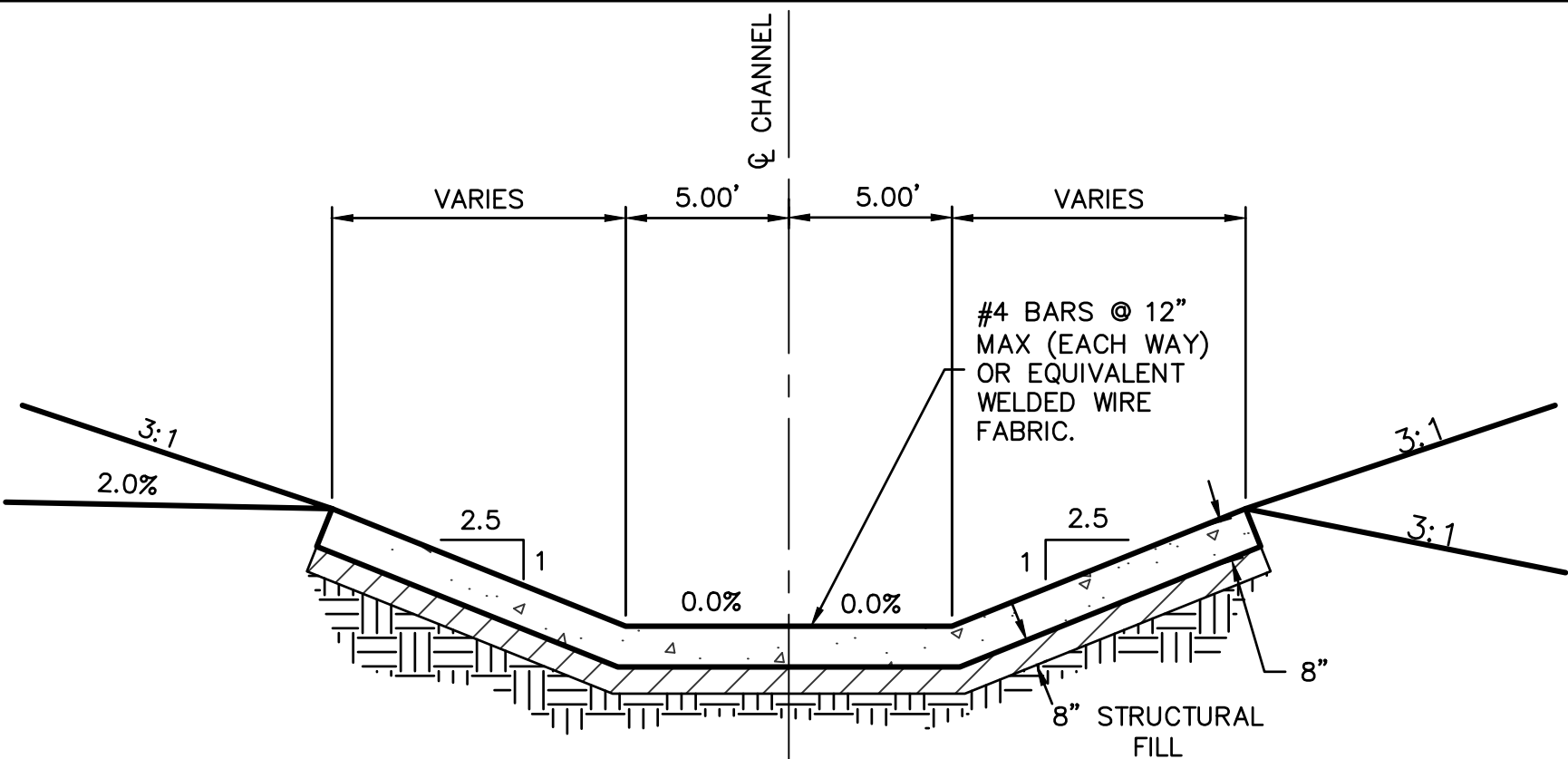
USER: kfullon

DWG: F:\2017\0001-0500\017-0305\40-Design\AutoCAD\Final Plans\Sheets\WTRs\DWG\GENERAL\W_CONC_CHAN_70305.dwg
DATE: Apr 04, 2019 1:18pm
XREFS: w_phase_70305 w_tbk_70305



CONCRETE DITCH LINING NOTES

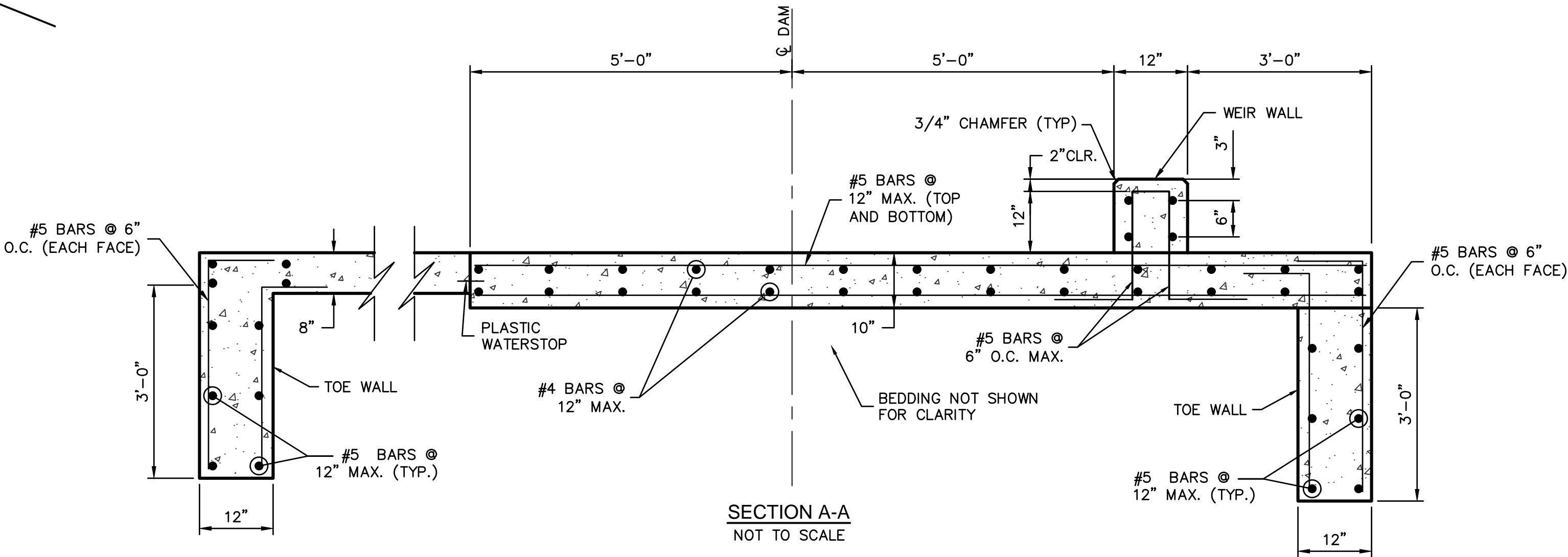
1. EXPANSION JOINTS SHALL BE PLACED WHERE DITCH LINER ABUTS ANOTHER STRUCTURE, AT 250' CTRS. MAXIMUM, AND AT POINTS OF CURVATURE. TRANSVERSE CONTRACTION JOINTS SHALL BE PLACED AT 10' INTERVALS. IF A POUR IS DELAYED 30 MINUTES OR MORE A TRANSVERSE CONSTRUCTION JOINT SHALL BE SUBSTITUTED FOR A CONTRACTION JOINT AND EXCESS CONCRETE WASTED.
2. DITCH LINER CONSTRUCTION TO BE MINIMUM 8" KCMMB4K CONCRETE.
3. LONGITUDINAL CONSTRUCTION JOINTS SHALL BE PLACED AS SHOWN WHEN WIDTH IS GREATER THAN 10'. DISTANCE BETWEEN JOINTS SHALL NOT EXCEED 10'.
4. ALL CONCRETE USED IN THIS WORK SHALL MEET THE REQUIREMENTS OF THE LEE'S SUMMIT DESIGN AND CONSTRUCTION MANUAL.
5. ALL DIMENSIONS RELATIVE TO REINFORCING STEEL ARE TO CENTERLINE OF BARS. 2" CLEARANCE SHALL BE PROVIDED THROUGHOUT UNLESS NOTED OTHERWISE. TOLERANCE OF $\pm \frac{1}{8}$ " SHALL BE PERMITTED.
6. ALL CONCRETE CONSTRUCTION SHALL MEET THE APPLICABLE REQUIREMENT OF STANDARD SPECIFICATIONS FOR STATE ROAD AND BRIDGE CONSTRUCTION, MISSOURI DEPARTMENT OF TRANSPORTATION, LATEST EDITION, EXCEPT AS MODIFIED IN LEE'S SUMMIT DESIGN AND CONSTRUCTION MANUAL.
7. ALL REINFORCING STEEL SHALL BE SUPPORTED ON FABRICATED STEEL BAR SUPPORTS @ 3'-0" MAXIMUM SPACING.
8. DO NOT SCALE THESE DRAWINGS FOR DIMENSIONS OR CLEARANCES. ANY QUESTIONS REGARDING DIMENSIONS SHALL BE BROUGHT TO THE ATTENTION OF THE DESIGN ENGINEER PRIOR TO CONSTRUCTION.
9. ALL CONTRACTION JOINTS SHALL BE SEALED WITH A NON-EXTRUDING JOINT SEALER.



CONCRETE CHANNEL TYPICAL SECTION

STA. 3+30 TO STA. 3+93.39
NOT TO SCALE

NOTE:
PRIOR TO INSTALLATION OF CONCRETE CHANNEL, SUBBASE
SHALL BE CLEARED OF ANY STONE AND SURFACE DEBRIS.



GENERAL NOTES:

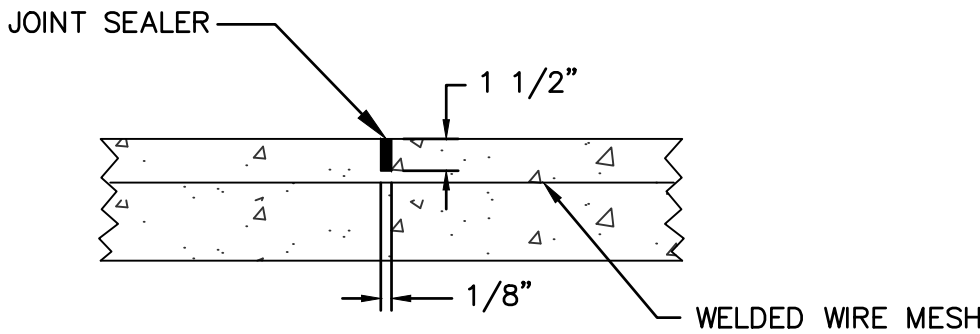
DESIGN CRITERIA: U.S. CORPS OF ENGINEERS STRUCTURAL DESIGN OF CONCRETE LINED FLOOD CONTROL CHANNELS, 1995.

MATERIALS:
CONCRETE, F'C = 4,000 PSI (MIN)
REINFORCING, F_y = 60,000 PSI

BENDS IN REINFORCING SHALL CONFORM TO CRSI MANUAL OF STANDARD PRACTICE.

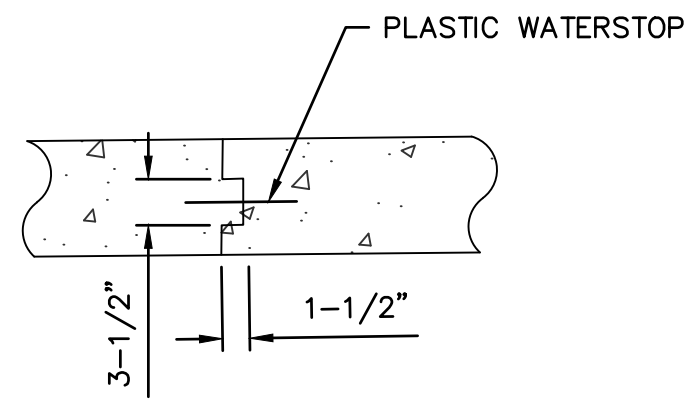
MINIMUM CLEAR COVER SHALL BE 2" UNLESS OTHERWISE SHOWN.

CONSTRUCTION JOINTS SHALL BE SEALED WITH AN APPROVED PLASTIC JOINT WATERSTOP AND JOINT SEALANT.



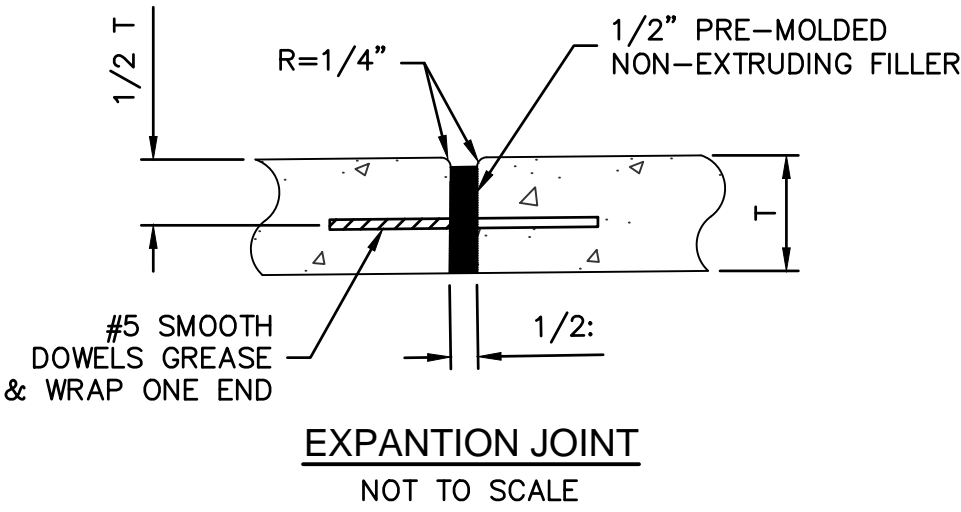
CONTRACTION JOINT

NOT TO SCALE



KEYED JOINT

NOT TO SCALE



EXPANSION JOINT

NOT TO SCALE

NOTES:

1. JOINTS SHALL BE PLACED AT ALL P.C.'s, P.T.'s AND TRANSITIONS.
2. SMOOTH BARS SHALL BE 24" LONG
3. DOWEL BARS SHALL BE LEVEL WHEN PLACED.

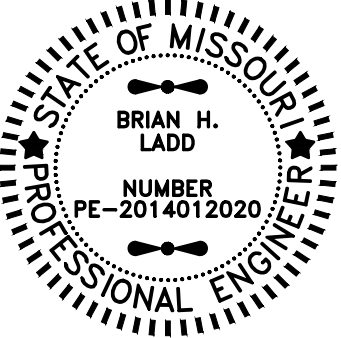
CONCRETE CHANNEL DETAIL

OLD LONGVIEW LAKE
DAM & SPILLWAY IMPROVEMENTS

LEE'S SUMMIT, MISSOURI

drawn by: KTF
checked by: BHL
approved by: BML
QA/QC by: CPL
project no.: 017-0305
drawing no.:
date: 04.04.2019

SHEET
13 OF 21



REV. NO.	DATE	REVISIONS DESCRIPTION	BY

REVISIONS

2019

olsson

7301 West 133rd Street, Suite 200
Overland Park, KS 66213-4750
TEL 913.381.1170
www.olson.com