



# I-470 LOT 13A LEE'S SUMMIT, JACKSON COUNTY, MISSOURI

**Quist Engineering, Inc**  
Civil Engineering for Residential & Commercial Site Development  
821 NE Columbus St.  
Lee's Summit, Missouri 64063  
Phone: (816) 550-5675  
email: nwalquist@quistengineering.com

COPYRIGHT © 2019

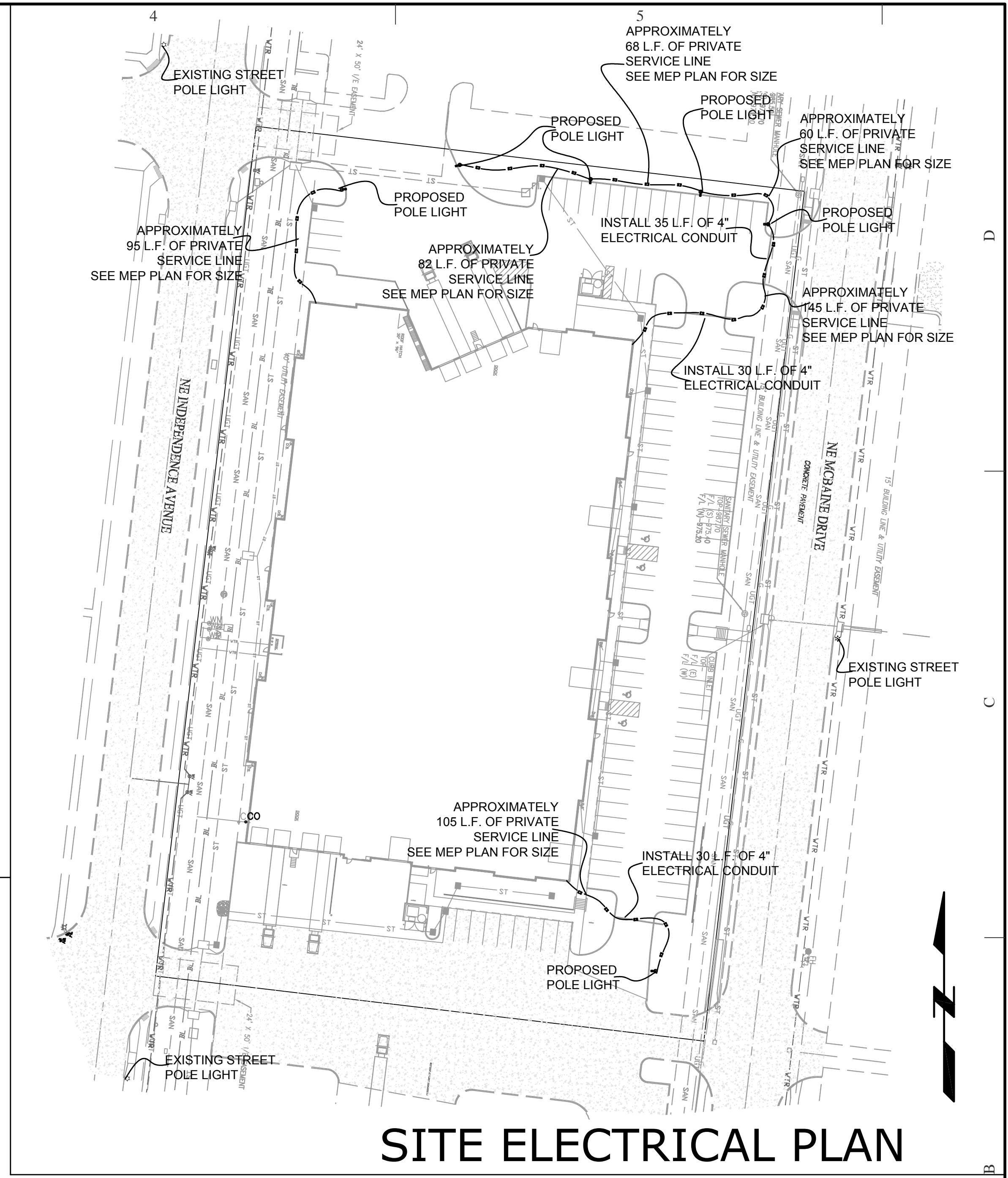
1ST ISSUE  
6-20-19

REVISIONS	
△	7-24-19
△	
△	
△	

SHEET NO.

**C700**

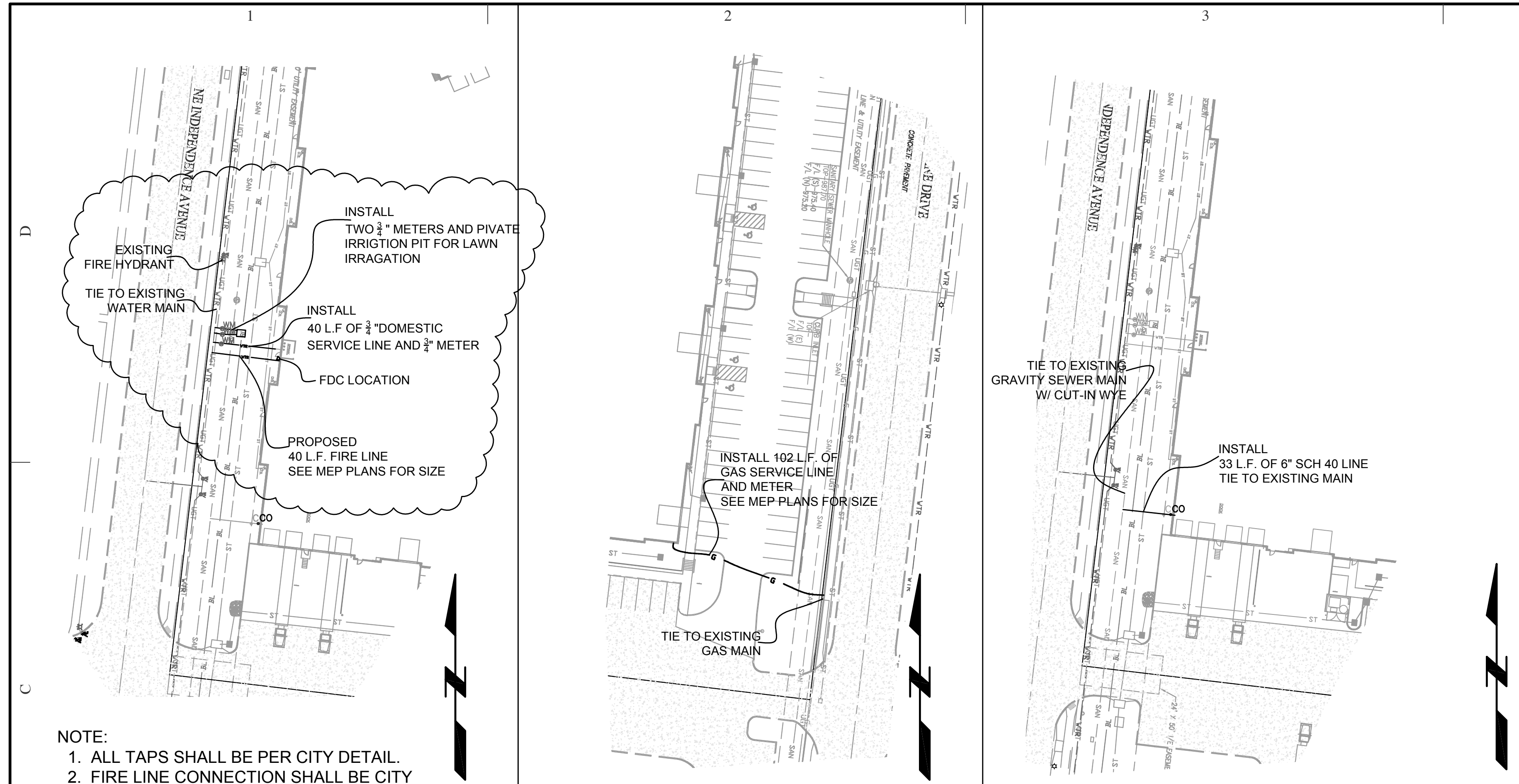
JOB NO.  
E18-337



## SITE ELECTRICAL PLAN

NOTE:  
1. CONTRACTOR SHALL COORDINATE WITH UTILITY COMPANY PRIOR TO CONSTRUCTION.

- NOTE:
1. ENDS OF ALL CONDUITS SHALL BE MARKED WITH 4"X4" WOOD POST.
  2. CONTRACTOR SHALL COORDINATE WITH UTILITY COMPANY PRIOR TO CONSTRUCTION.
  3. CONTRACTOR SHALL COORDINATE WITH UTILITY COMPANY PRIOR TO CONSTRUCTION.
  4. SHOP DRAWINGS FOR THE LIGHT POLES SHALL BE SUBMITTED AND APPROVED PRIOR TO CONSTRUCTION.



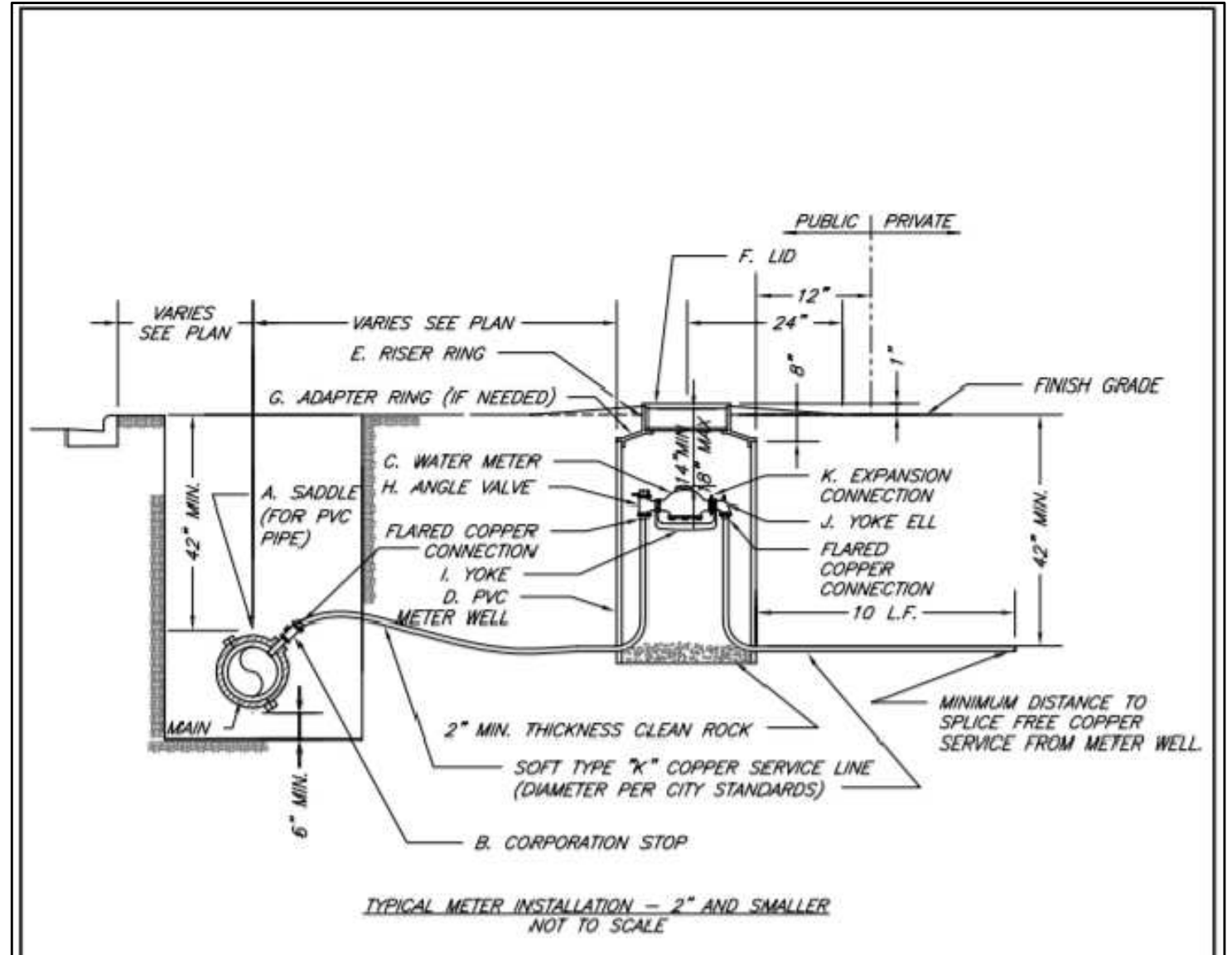
## SITE WATER PLAN

## GAS SERVICE PLAN

## SITE SEWER PLAN

NOTE:  
1. ALL TAPS SHALL BE PER CITY DETAIL.  
2. FIRE LINE CONNECTION SHALL BE CITY REQUIREMENTS.

NOTE:  
1. CONTRACTOR SHALL COORDINATE WITH UTILITY COMPANY PRIOR TO CONSTRUCTION.



- NOTES:
1. METER INSTALLATION SHALL NOT BE LOCATED IN AREAS SUBJECT TO VEHICULAR TRAFFIC OR IN CONCRETE PAVEMENT WITHOUT CITY APPROVAL.
  2. IF METER IS TO BE LOCATED OTHER THAN IN FRONT OF PROPERTY LINE, CITY APPROVAL SHALL BE OBTAINED.
  3. CITY TO FURNISH ITEMS A-K.
  4. NO OTHER EQUIPMENT SHALL BE INSTALLED IN THIS PIT.
  5. 42" MINIMUM BURY DEPTH FOR ALL SERVICE LINES.
  6. EXCAVATION FOR TAP TO EXPOSE 4' LINEAR FEET OF MAIN.
  7. NO SPLICES ALLOWED BETWEEN METER AND MAIN.
  8. SERVICE CONNECTION TAP AT APPROXIMATELY 45 DEGREES.
  9. LID AND RISER RING SHALL BE SET SO THAT GROUND WATER WILL DRAIN AWAY FROM THE WELL.
  10. CONTACT WATER UTILITIES, 816-969-1900, FOR REQUIREMENTS OF A METER LARGER THAN 2"

**LEE'S SUMMIT MISSOURI**  
PUBLIC WORKS ENGINEERING DIVISION | 228 1/2 GREEN STREET | LEE'S SUMMIT, MO 64063

Service Connection/Meter Well

Date: 02/13
Drawn By: JM
Checked By: DL
FILE: NAT-11
Rev: 1/14
Rev:

- LEGEND**
- ⊗ FIRE HYDRANT
  - ⊕ WATER VALVE
  - ⊞ WATER METER
  - ⊞ GAS METER
  - ⊕ GAS MARKER
  - MANHOLE
  - ⊞ STREET LIGHT
  - ⊕ YARD LIGHT
  - ⊕ CABLE TV PEDESTAL
  - ⊗ ELECTRIC TRANSFORMER
  - ⊞ TELEPHONE BOX
  - ⊞ POWER POLE
  - ⊞ POWER POLE W/TEL.
  - ⊞ ELECTRICAL PULL BOX
  - ⊞ POWER POLE W/STREET LIGHT
  - ⊕ ELECTRICAL PULL BOX
  - ⊕ GROUND FLOOD LIGHT
  - ⊕ TRAFFIC SIGN

## SITE UTILITY PLAN