

Local Benchmarks:

BM-1: Center front edge of Curb Inlet.
Elevation: 999.63'
N: 1013173.04
E: 2827639.71

BM-2: Cut plus on Northeast bolt on hydrant.
Elevation: 1005.29
N: 1013295.66
E: 2827399.19

Floodplain Note:

The site lies entirely outside of the 100-year floodplain (zone X) as depicted on the FEMA Flood Insurance Rate Map (FIRM) community panel no. 0305F (City of Lee's Summit). Map no. 29095C0305F Date: September 29, 2006.

Property Legend

According to the MDNR Record Database and Field Survey, there is no evidence suggesting presence of any active, inactive or capped oil and/or gas wells on the property

- right of way
- property lines
- easements
- setbacks

Grading Legend

- existing minor contour
- existing major contour
- proposed minor contour
- proposed major contour

Utility Legend

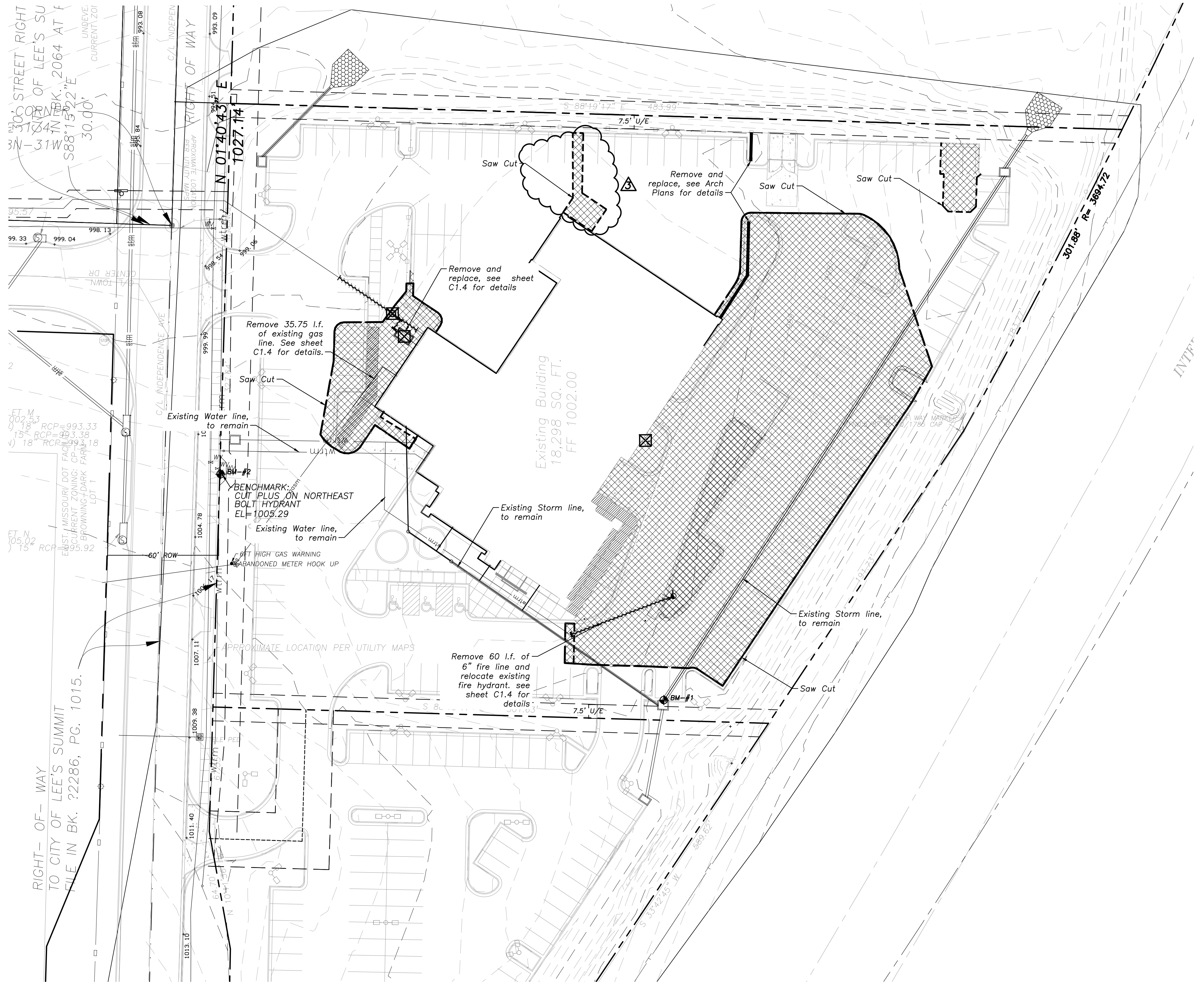
- existing
- proposed

Linetypes

- sanm sanitary main
- sans sanitary service
- ssm storm sewer (existing)
- ssms storm sewer (solid wall, proposed)
- stm storm sewer (solid wall, proposed)
- ssms storm sewer (perforated, proposed)
- wtrm water main
- wtrf water service (fire)
- wtrd water service (domestic)
- wtri water service (irrigation)
- gasm natural gas main
- gass natural gas service schematic
- elpu underground primary electric
- elsu underground secondary electric
- elpo overhead electric
- datu underground cable/phone/data
- datasu underground cable/phone/data service
- u fence-chainlink
- w fence-wood
- wb fence-barbed wire
- treeline

Symbols

- ⊙ sanitary manhole
- ⊙ service cleanout
- ⊙ fmv force main release valve
- rectangular structure
- circular structure
- ⊙ fire hydrant
- ⊙ wv water valve
- ⊙ w water meter
- ⊙ BFP backflow preventer
- ⊙ natural gas meter
- ⊙ service transformer (pad mount)
- ⊙ primary switch gear
- ⊙ light pole
- ⊙ cable/phone/data junction box
- ⊙ street light
- ⊙ pedestrian street light
- ⊙ electric pole
- guy wire
- ⊙ end section



Demolition Legend

- ⊙ remove existing structures and associated pipe
- ⊙ remove existing power/light pole and associated wiring
- ⊙ remove existing trees
- existing building demolition
- remove full depth existing pavement and curb & gutter
- remove existing retaining wall/fence
- remove existing sidewalk & landscaping
- Saw cut

Demolition Legend

- Coordinate removal of existing/former gas main with utility.
- Coordinate removal of existing/former sanitary sewer lines with city.
- Coordinate removal of existing/former water lines with utility.
- Remove full existing storm sewer lines and structures as shown.
- Coordinate removal of existing/former telecom/data with utility
- Coordinate removal of existing primary & secondary electrical with utility

1 Demolition Plan
1"=30'
north
0 15 30 60

a building addition for
Lee's Summit Subaru
2101 NE Independence Ave.
Lee's Summit, Missouri 64064

date 05.17.2019
drawn by
checked by SML
revisions PAM

06.14.2019	2
06.21.2019	3

sheet number
C1.3
drawing type permit
project number 18087