

VACATION OF UTILITY EASEMENTS EXHIBIT
A PART OF LOTS 13, 14, 21 AND 22
I-470 BUSINESS AND TECHNOLOGY CENTER
LEE'S SUMMIT, JACKSON COUNTY, MISSOURI

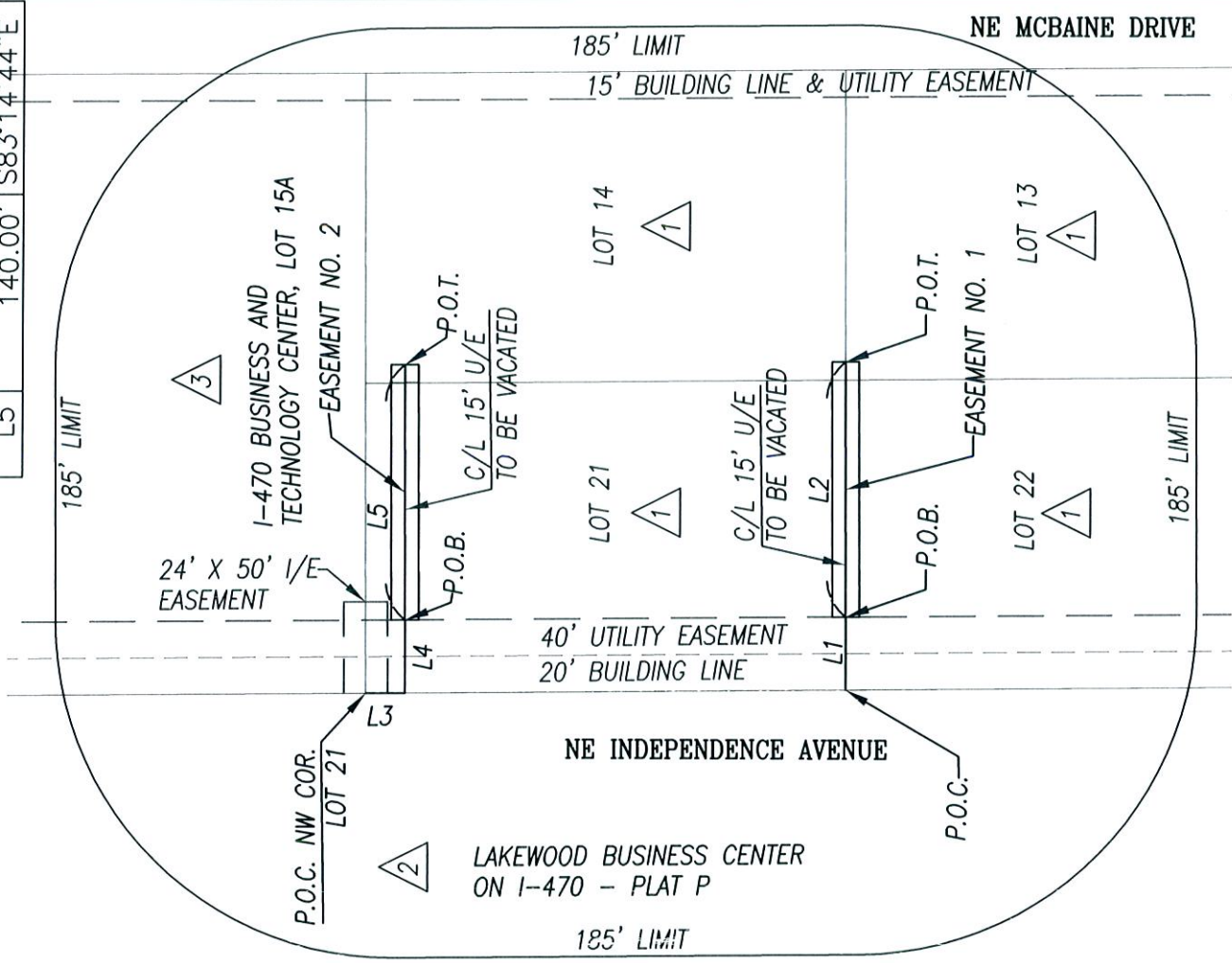
△# = TRACT NUMBER

OWNERSHIP:

- MARION RIDGE SAFETY STORAGE LLC
 1101 C NW PAMELA BLVD
 GRAIN VALLEY, MO 64029
- LBP IV LLC
 3170 NE CARNEGIE DR STE 400
 LEE'S SUMMIT, MO 64064
- LSMOB OWNER, LLC
 11715 ADMINISTRATION DR., SUITE 200
 MARYLAND HEIGHTS, MO. 63146

LEGEND:

- P.O.C. - POINT OF COMMENCEMENT
- P.O.B. - POINT OF BEGINNING
- P.O.T. - POINT OF TERMINATION



LINE TABLE		
LINE	LENGTH	BEARING
L1	40.00'	S83°14'56"E
L2	140.00'	S83°14'56"E
L3	21.50'	S06°45'04"W
L4	40.00'	S83°14'44"E
L5	140.00'	S83°14'44"E

VACATION DESCRIPTION:

EASEMENT NO. 1

A PART OF LOTS 13, 14, 21 AND 22, I-470 BUSINESS AND TECHNOLOGY CENTER, A SUBDIVISION IN LEE'S SUMMIT, JACKSON COUNTY, MISSOURI WITH THE CENTERLINE OF A CENTERLINE OF A 15 FEET UTILITY EASEMENT BEING DESCRIBED AS FOLLOWS:
 COMMENCING AT THE NORTHWEST CORNER OF SAID LOT 22; THENCE SOUTH 83 DEGREES 14 MINUTES 56 SECONDS EAST, 40.00 FEET TO THE POINT OF BEGINNING; THENCE CONTINUE SOUTH 14 MINUTES 56 SECONDS EAST, 140.00 FEET TO A POINT OF TERMINATION. CONTAINING 2,100 SQUARE FEET, MORE OR LESS.

VACATION DESCRIPTION:

EASEMENT NO. 2

A PART OF LOTS 14 AND 21, I-470 BUSINESS AND TECHNOLOGY CENTER, A SUBDIVISION IN LEE'S SUMMIT, JACKSON COUNTY, MISSOURI WITH THE CENTERLINE OF A 15 FEET UTILITY EASEMENT BEING DESCRIBED AS FOLLOWS:
 COMMENCING AT THE NORTHWEST CORNER OF SAID LOT 21; THENCE SOUTH 06 DEGREES 45 MINUTES 04 SECONDS WEST, 21.50 FEET; THENCE SOUTH 83 DEGREES 14 MINUTES 44 SECONDS EAST, 40.00 FEET TO THE POINT OF BEGINNING; THENCE CONTINUE SOUTH 83 DEGREES 14 MINUTES 44 SECONDS EAST, 140.00 FEET TO A POINT OF TERMINATION. CONTAINING 2,100 SQUARE FEET, MORE OR LESS.

0 50 100



Scale in Feet
 1" = 100'

DATE: JUNE 25, 2019

CLIENT:

MARION RIDGE SAFETY STORAGE, LLC
 ATTN: DAVID L. WARD
 1101 C NW PAMELA BLVD.
 GRAIN VALLEY, MISSOURI 64029

VACATION OF UTILITY EASEMENTS EXHIBIT

BOUNDARY & CONSTRUCTION

SURVEYING, INC.

821 NE COLUMBUS STREET SUITE 100, LEE'S SUMMIT, MO. 64063
 PH: # 816/554-9798, FAX # 816/554-0337

PROJECT NO. 18-329

SHEET 1 OF 1

I-470 BUSINESS AND TECHNOLOGY CENTER, LEE'S SUMMIT, MO.