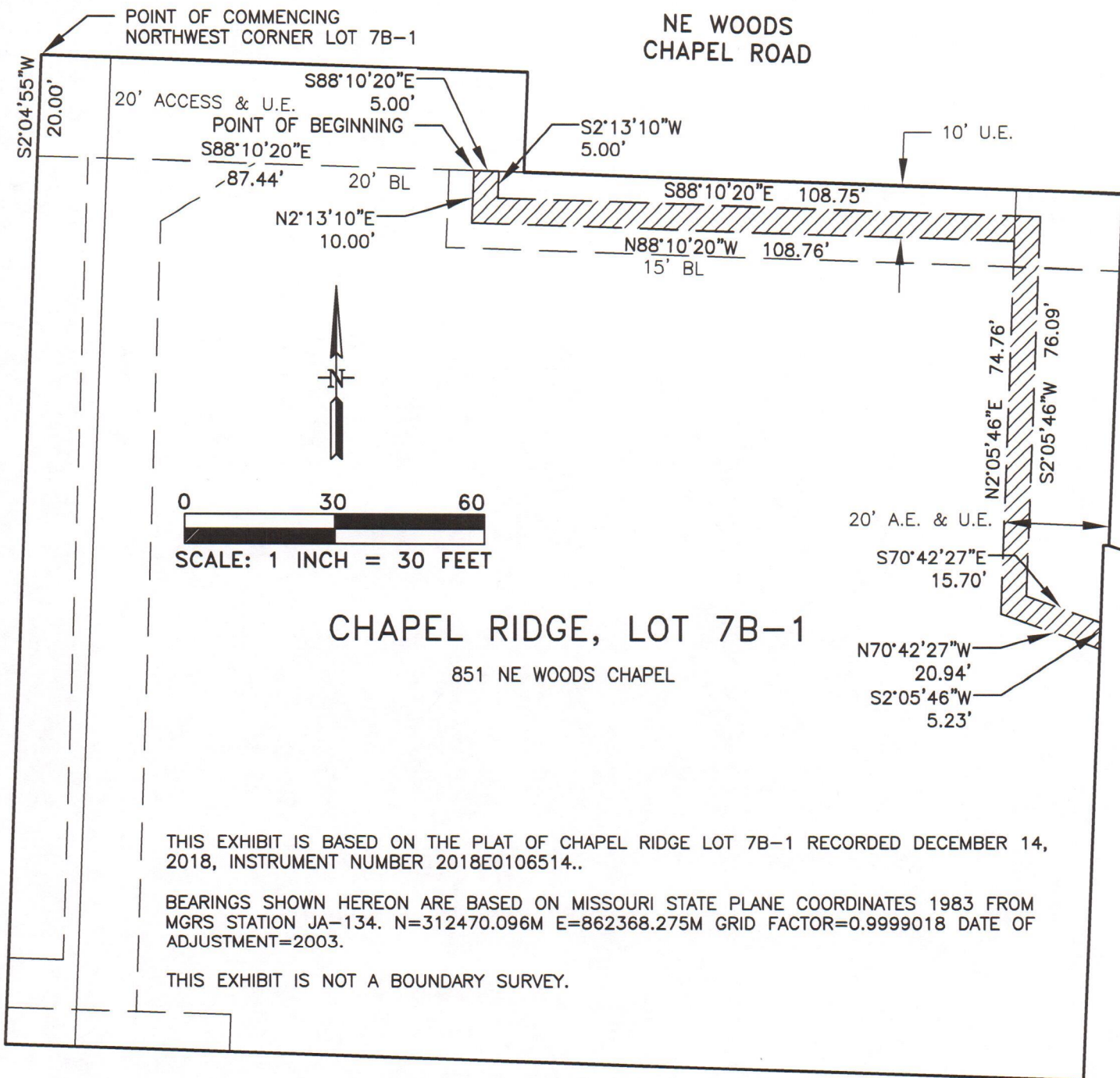


EXHIBIT

NE WOODS
CHAPEL ROAD



CHAPEL RIDGE, LOT 7B-1

851 NE WOODS CHAPEL

THIS EXHIBIT IS BASED ON THE PLAT OF CHAPEL RIDGE LOT 7B-1 RECORDED DECEMBER 14, 2018, INSTRUMENT NUMBER 2018E0106514..

BEARINGS SHOWN HEREON ARE BASED ON MISSOURI STATE PLANE COORDINATES 1983 FROM MGRS STATION JA-134. N=312470.096M E=862368.275M GRID FACTOR=0.9999018 DATE OF ADJUSTMENT=2003.

THIS EXHIBIT IS NOT A BOUNDARY SURVEY.

BY MCLAUGHLIN MUELLER, INC.



MCLAUGHLIN MUELLER, INC.

Professional Land Surveyors
218 West Mill Street
Liberty, MO 64068

PH 816-407-0002 FX 816-407-0003
Corporation LS 1999141096

DRAWING NAME: 19017VacUe.dwg

DATE: MAY 8, 2019

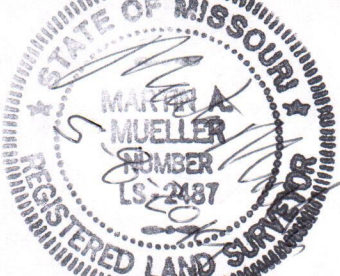
© McLaughlin Mueller, Inc. 2019

PROJECT NO.: 19017

DESCRIPTION:

PART OF CHAPEL RIDGE, LOT 7B-1, A SUBDIVISION OF LAND IN LEE'S SUMMIT, JACKSON COUNTY, MISSOURI, DESCRIBED AS FOLLOWS; COMMENCING AT THE NORTHWEST CORNER OF SAID CHAPEL RIDGE, LOT 7B-1; THENCE S02°04'55"W, ALONG THE WEST LINE OF SAID CHAPEL RIDGE, LOT 7B-1, A DISTANCE OF 20.00 FEET; THENCE S88°10'20"E, A DISTANCE OF 87.44 FEET TO THE POINT OF BEGINNING; THENCE S88°10'20"E, A DISTANCE OF 5.00 FEET; THENCE S02°13'10"W, A DISTANCE OF 5.00 FEET; THENCE S88°10'20"E, A DISTANCE OF 108.75 FEET; THENCE S02°05'46"W, A DISTANCE OF 76.09 FEET; THENCE S70°42'27"E, A DISTANCE OF 15.70 FEET TO THE EAST LINE OF SAID CHAPEL RIDGE, LOT 7B-1; THENCE S02°05'46"W, ALONG SAID EAST LINE, A DISTANCE OF 5.23 FEET TO THE SOUTH LINE OF A 20.00 FEET WIDE ACCESS AND UTILITY EASEMENT; THENCE N70°42'27"W, ALONG SAID SOUTH LINE, A DISTANCE OF 20.94 FEET TO THE WEST LINE OF SAID 20.00 FEET WIDE ACCESS AND UTILITY EASEMENT; THENCE N02°05'46"E, ALONG SAID WEST LINE, A DISTANCE OF 74.76 FEET TO THE SOUTH LINE OF SAID 10.00 FEET WIDE UTILITY EASEMENT; THENCE N88°10'20"W, ALONG SAID SOUTH LINE, A DISTANCE OF 108.76 FEET TO THE WEST LINE OF SAID 10.00 FEET WIDE UTILITY EASEMENT; THENCE N02°13'10"E, ALONG SAID WEST LINE, A DISTANCE OF 10.00 FEET TO THE POINT OF BEGINNING. CONTAINING 1049 SQUARE FEET, MORE OR LESS.

BY MCLAUGHLIN MUELLER, INC.

MARTIN MUELLER,
PLS 2487

MCLAUGHLIN MUELLER, INC.

Professional Land Surveyors

218 West Mill Street

Liberty, MO 64068

PH 816-407-0002 FX 816-407-0003

Corporation LS 1999141096

DRAWING NAME: 19017VacUe.DWG

DATE: MAY 8, 2019

© McLaughlin Mueller, Inc. 2019

PROJECT NO.: 19017