

17107 Chesterfield Airport Road | Suite 110
 Chesterfield, Missouri 63005
 T: 314.991.9993
 aciboland.com

ACI Boland Architects
 St. Louis | Kansas City
 Licensee's Certificate of Authority Number:
 Missouri No.: 000958 (Expires: 12.31.2017)

CIVIL CONSULTANT
 McClure Engineering Co.
 1360 NW 121st Street, Suite A
 Clive, Iowa 50325
 515.964.1229
 State Certificate of Authority #000143

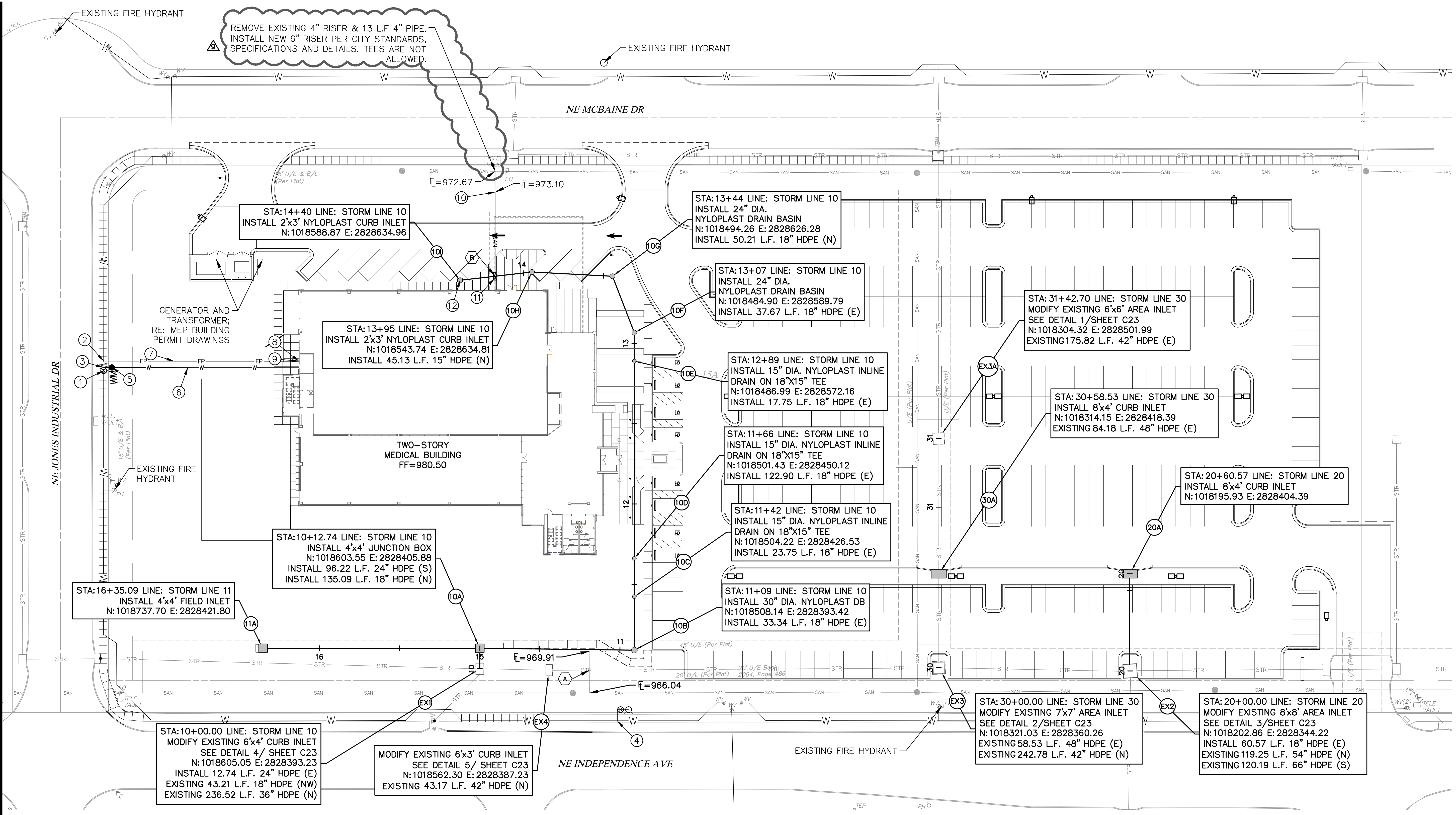
STRUCTURAL CONSULTANT
 KPFF, Inc.
 1610 Des Peres Road, Suite 100
 St. Louis, Missouri 63131
 314.835.0524
 State Certificate of Authority #2001010829

MEP/FP CONSULTANT
 G&W Engineering Corporation
 138 Weldon Parkway
 Maryland Heights, Missouri 63043
 314.737.4200
 State Certificate of Authority #2002018767

Proposed New Core & Shell Building For:
Lee's Summit Surgical
 Lee's Summit, Missouri

Date: 9/22/17
 Job Number: 170534-010
 Drawn By: ELM
 Checked By: MDM

Number	Date	Description
1	10/30/17	CITY COMMENTS
2	11/28/17	CITY COMMENTS
3	3/16/18	BLDG. SIZE CHANGE
4	9/15/18	BLDG. SIZE CHANGE
5	10/11/18	BID SET
6	10/17/18	REVISED ENTRANCE
7	11/26/18	PERMIT SET
8	06/04/19	REVISED SAN STUB DIA
9	06/12/19	REVISED SAN INFO



REMOVE EXISTING 4" RISER & 13 L.F. 4" PIPE. INSTALL NEW 6" RISER PER CITY STANDARDS, SPECIFICATIONS AND DETAILS. TEES ARE NOT ALLOWED.

STA:14+40 LINE: STORM LINE 10
 INSTALL 2'x3' NYLOPLAST CURB INLET
 N:1018588.87 E:2828634.96

STA:13+44 LINE: STORM LINE 10
 INSTALL 24" DIA. NYLOPLAST DRAIN BASIN
 N:1018494.26 E:2828626.28
 INSTALL 50.21 L.F. 18" HDPE (N)

STA:13+07 LINE: STORM LINE 10
 INSTALL 24" DIA. NYLOPLAST DRAIN BASIN
 N:1018484.90 E:2828589.79
 INSTALL 37.67 L.F. 18" HDPE (E)

STA:31+42.70 LINE: STORM LINE 30
 MODIFY EXISTING 6'x6' AREA INLET
 SEE DETAIL 1/SHEET C23
 N:1018304.32 E:2828501.99
 EXISTING 175.82 L.F. 42" HDPE (E)

STA:13+95 LINE: STORM LINE 10
 INSTALL 2'x3' NYLOPLAST CURB INLET
 N:1018543.74 E:2828634.81
 INSTALL 45.13 L.F. 15" HDPE (N)

STA:12+89 LINE: STORM LINE 10
 INSTALL 15" DIA. NYLOPLAST INLINE DRAIN ON 18"x15" TEE
 N:1018486.99 E:2828572.16
 INSTALL 17.75 L.F. 18" HDPE (E)

STA:30+58.53 LINE: STORM LINE 30
 INSTALL 8'x4' CURB INLET
 N:1018314.15 E:2828418.39
 EXISTING 84.18 L.F. 48" HDPE (E)

STA:20+60.57 LINE: STORM LINE 20
 INSTALL 8'x4' CURB INLET
 N:1018195.93 E:2828404.39

STA:11+66 LINE: STORM LINE 10
 INSTALL 15" DIA. NYLOPLAST INLINE DRAIN ON 18"x15" TEE
 N:1018501.43 E:2828450.12
 INSTALL 122.90 L.F. 18" HDPE (E)

STA:11+42 LINE: STORM LINE 10
 INSTALL 15" DIA. NYLOPLAST INLINE DRAIN ON 18"x15" TEE
 N:1018504.22 E:2828426.53
 INSTALL 23.75 L.F. 18" HDPE (E)

STA:11+09 LINE: STORM LINE 10
 INSTALL 30" DIA. NYLOPLAST DB
 N:1018508.14 E:2828393.42
 INSTALL 33.34 L.F. 18" HDPE (E)

STA:16+35.09 LINE: STORM LINE 11
 INSTALL 4'x4' FIELD INLET
 N:1018737.70 E:2828421.80

STA:10+12.74 LINE: STORM LINE 10
 INSTALL 4'x4' JUNCTION BOX
 N:1018603.55 E:2828405.88
 INSTALL 96.22 L.F. 24" HDPE (S)
 INSTALL 135.09 L.F. 18" HDPE (N)

STA:10+00.00 LINE: STORM LINE 10
 MODIFY EXISTING 6'x4' CURB INLET
 SEE DETAIL 4/ SHEET C23
 N:1018605.05 E:2828393.23
 INSTALL 12.74 L.F. 24" HDPE (E)
 EXISTING 43.21 L.F. 18" HDPE (NW)
 EXISTING 236.52 L.F. 36" HDPE (N)

MODIFY EXISTING 6'x3' CURB INLET
 SEE DETAIL 5/ SHEET C23
 N:1018562.30 E:2828387.23
 EXISTING 43.17 L.F. 42" HDPE (N)

STA:30+00.00 LINE: STORM LINE 30
 MODIFY EXISTING 7'x7' AREA INLET
 SEE DETAIL 2/SHEET C23
 N:1018321.03 E:2828360.26
 EXISTING 58.53 L.F. 48" HDPE (E)
 EXISTING 242.78 L.F. 42" HDPE (N)

STA:20+00.00 LINE: STORM LINE 20
 MODIFY EXISTING 8'x8' AREA INLET
 SEE DETAIL 3/SHEET C23
 N:1018202.86 E:2828344.22
 INSTALL 60.57 L.F. 18" HDPE (E)
 EXISTING 119.25 L.F. 54" HDPE (N)
 EXISTING 120.19 L.F. 66" HDPE (S)

KEYNOTES:

- INSTALL 8" GATE VALVE ON WATER MAIN.
- INSTALL 8"x6" TEE WITH 6" GATE VALVE TO SOUTH.
- INSTALL 8"x6" TEE WITH A 6" TO 4" REDUCER TO SOUTH AND 5 L.F. 4" DOMESTIC SERVICE LINE.
- INSTALL STANDARD HYDRANT ASSEMBLY.
- INSTALL A 2" WATER METER.
- INSTALL 117 L.F. 4" DOMESTIC SERVICE LINE.
- INSTALL 122 L.F. 6" FIRE LINE.
- DOUBLE CHECK DETECTOR/FIRE RISER IN BUILDING; RE:MEP BUILDING PERMIT DRAWINGS.
- INSTALL FIRE DEPARTMENT CONNECTION ON OUTSIDE FACE OF BUILDING
- CONNECT TO NEW SANITARY SEWER STUB @ 973.10 (FIELD VERIFY ELEVATION) AND INSTALL 74 L.F. OF 6" PVC SDR-26 AND CONNECT TO THE BUILDING SANITARY SEWER.
- INSTALL 5 L.F. OF CONCRETE ENCASUREMENT AROUND SANITARY SEWER LINE.
- CONNECT ROOFDRAIN DOWNSPOUTS TO PROPOSED NYLOPLAST INLET. FL IN AT INLET 974.5.

UTILITY PLAN NOTES:

- ALL UTILITIES SHOWN ARE APPROXIMATE LOCATIONS ONLY AND HAVE BEEN COMPILED FROM THE LATEST AVAILABLE MAPPING, FIELD LOCATES, AND AS-BUILTS. THE EXACT LOCATION OF ALL UNDERGROUND UTILITIES SHALL BE VERIFIED BY THE CONTRACTOR PRIOR TO THE START OF CONSTRUCTION.
- GENERAL CONTRACTOR TO COORDINATE WITH ALL THE LOCAL UTILITY COMPANIES FOR ALL LOCATIONS AND SERVICE CONNECTIONS.
- THE CONTRACTOR SHALL VISIT THE SITE AND VERIFY THE ELEVATION AND LOCATION OF ALL UTILITIES BY VARIOUS MEANS PRIOR TO BEGINNING ANY EXCAVATION. THE CONTRACTOR SHALL CONTACT ENGINEER IN THE EVENT OF ANY UNFORESEEN CONFLICTS BETWEEN EXISTING AND PROPOSED UTILITIES SO THAT AN APPROPRIATE MODIFICATION MAY BE MADE.
- THE CONTRACTOR SHALL ENSURE THAT ALL UTILITY COMPANIES AND CITY STANDARDS FOR MATERIALS AND CONSTRUCTION METHODS ARE MET. THE CONTRACTOR SHALL PERFORM PROPER COORDINATION WITH THE RESPECTIVE UTILITY COMPANY. THE CONTRACTOR SHALL COORDINATE WORK TO BE PERFORMED BY THE VARIOUS UTILITY COMPANIES AND SHALL PAY ALL FEES FOR CONNECTIONS, DISCONNECTION, RELOCATIONS, INSPECTIONS, AND DEMOLITION.
- ALL VALVE PITS SHALL BE ADJUSTED TO FINAL GRADE.
- SANITARY SERVICE LATERAL SHALL MAINTAIN MINIMUM OF 10'-FT HORIZONTAL AND 1.5'-FT VERTICAL SEPARATION DISTANCE FROM WATER LINES. WATER LINES SHALL BE INSTALLED TO MAINTAIN A MINIMUM OF 42"-INCHES OF COVER OVER THE PIPE. THE CONTRACTOR IS RESPONSIBLE FOR ADJUSTING THE ELEVATION OF THE WATER LINE TO AVOID OTHER UTILITIES AND UNDERGROUND OBSTRUCTIONS.

- THIS PLAN DETAILS PIPES UP TO 5'-FT FROM THE BUILDING FACE. REFER TO THE BUILDING DRAWINGS FOR BUILDING CONNECTIONS.
- ALL EXISTING PAVEMENT WHERE UTILITY PIPING IS TO BE INSTALLED SHALL BE SAW CUT AND REPLACED IN ACCORDANCE WITH THE PAVEMENT REPAIR REQUIREMENTS OF THE GOVERNING AUTHORITY.
- COPPER PIPE SHALL BE TYPE K TUBING WITH COMPRESSION FITTINGS.
- ALL SANITARY SEWER SERVICE LINES SHALL BE SDR-26 PVC PIPE. ALL PVC PIPE SHALL BE INSTALLED IN ACCORDANCE WITH CITY REQUIREMENTS.
- ELECTRICAL SERVICE LINES SHOWN ON THE PLAN SHALL BE INSTALLED IN CONDUITS IN ACCORDANCE WITH KCP&L'S STANDARD REQUIREMENTS.
- SANITARY SEWER AND STORM SEWER LINES SHALL BE INSTALLED TO MAINTAIN POSITIVE SLOPE. THE CONTRACTOR SHALL VERIFY THAT EACH RUN OF PIPE CAN BE INSTALLED WITH A POSITIVE SLOPE WITHOUT INTERFERENCE WITH OTHER UNDERGROUND UTILITIES OR OBSTRUCTIONS PRIOR TO INSTALLING THE LINE.
- PROVIDE CONCRETE THRUST BLOCKS AT ALL FIRE LINE TEES AND HORIZONTAL OR VERTICAL BEND FITTINGS.
- COORDINATE SIZING OF FIRE LINE, DOUBLE CHECK DETECTOR ASSEMBLY, AND ASSOCIATED VAULT WITH BUILDING FIRE SUPPRESSION SYSTEM DESIGN, BY OTHERS.

PIPE SEPARATION				
CROSSING	PIPE 1	PIPE 2	SEPARATION	NOTES
A	EXISTING SANITARY	EXISTING STORM	±0.45'	FIELD VERIFY
B	PROPOSED SANITARY	PROPOSED STORM	±4.17'	CONCRETE ENCASE SANITARY



SCALE: 1"=30'
 30 15 0 30