

Public Storm and Water Improvements

Section 6, Township 41 North, Range 31 West

Lee's Summit, Jackson County, Missouri

GENERAL NOTES:

- 1 - ALL CONSTRUCTION SHALL CONFORM TO THE CITY OF LEE'S SUMMIT DESIGN AND CONSTRUCTION MANUAL AS ADOPTED BY ORDINANCE 5813.
- 2 - ALL REQUIRED EASEMENTS WITHIN THE BOUNDARY OF THIS PROJECT SHALL BE PROVIDED BY SEPARATE DOCUMENT
- 3 - ANY REQUIRED EASEMENT LOCATED OUTSIDE OF THE BOUNDARY OF THIS PROJECT SHALL BE PROVIDED FOR BY SEPARATE INSTRUMENT PRIOR TO ISSUANCE OF CONSTRUCTION PERMITS.
- 4 - THE CONTRACTOR SHALL NOTIFY THE CITY OF LEE'S SUMMIT DEVELOPMENT ENGINEERING INSPECTION AT 816.969.1200 AT LEAST 48 HOURS PRIOR TO THE COMMENCEMENT OF ANY CONSTRUCTION.
- 5 - THE CONTRACTOR SHALL NOTIFY ENGINEERING SOLUTIONS AT 816.623.9888 OF ANY CONFLICT WITH THE IMPROVEMENTS PROPOSED BY THESE PLANS AND SITE CONDITIONS.
- 6 - THE CONTRACTOR SHALL NOTIFY THE CITY ENGINEER AND OBTAIN THE APPROPRIATE BLASTING PERMITS FOR A REQUIRED BLASTING. IF BLASTING IS ALLOWED, ALL BLASTING SHALL CONFORM TO STATE REGULATIONS AND LOCAL ORDINANCES.

UTILITY COMPANIES:

THE FOLLOWING LIST OF UTILITY COMPANIES IS PROVIDED FOR INFORMATION ONLY. WE DO NOT OFFER ANY GUARANTEE OR WARRANTY THAT THIS LIST IS COMPLETE OR ACCURATE. THE CONTRACTOR SHALL BE RESPONSIBLE FOR CONTACTING ALL UTILITY COMPANIES THAT MAY BE AFFECTED BY THE PROPOSED CONSTRUCTION AND VERIFYING THE ACTUAL LOCATION OF EACH UTILITY LINE. THE CONTRACTOR SHALL NOTIFY ENGINEERING SOLUTIONS AT 816.623.9888 OF ANY CONFLICT WITH PROPOSED IMPROVEMENTS.

- KCP&L ~ 298-1196
- MISSOURI GAS ENERGY ~ 756-5261
- SOUTHWESTERN BELL TELEPHONE ~ 761-5011
- COMCAST CABLE ~ 795-1100
- WILLIAMS PIPELINE ~ 422-6300
- CITY OF LEE'S SUMMIT PUBLIC WORKS ~ 969-1800
- CITY OF LEE'S SUMMIT DEVELOPMENT ENGINEERING INSPECTION AT 816.969.1200
- CITY OF LEE'S SUMMIT WATER UTILITIES ~ 969-1900
- MISSOURI ONE CALL (DIG RITE) ~ 1-800-344-7483

OIL - GAS WELLS

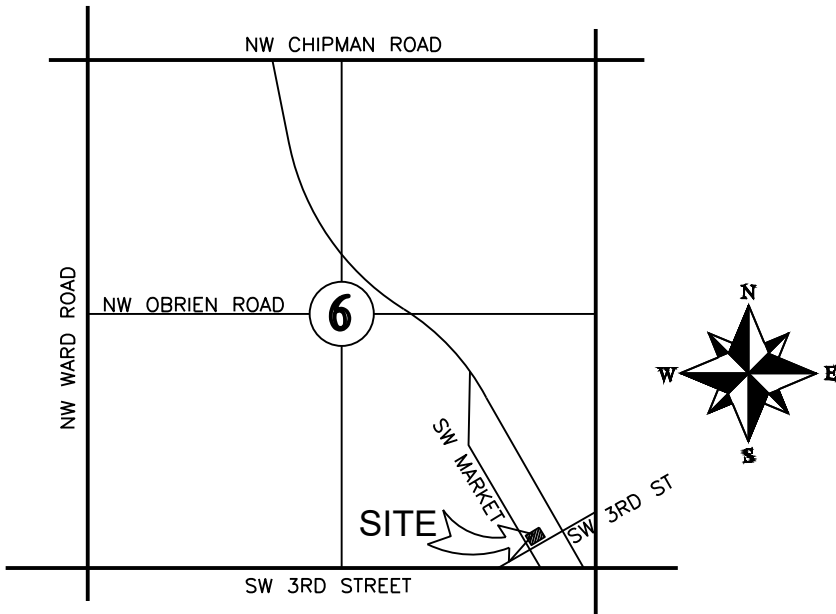
ACCORDING TO EDWARD ALTON MAY JR'S ENVIRONMENTAL IMPACT STUDY OF ABANDONED OIL AND GAS WELLS IN LEE'S SUMMIT, MISSOURI IN 1995, THERE ARE NOT OIL AND GAS WELLS WITHIN 185 FEET OF THE PROPERTY AS SURVEYED HEREON.

FLOOD INFORMATION:

SITE IS LOCATED ON FIRM PANEL 29095C0417G, DATED JANUARY 20, .

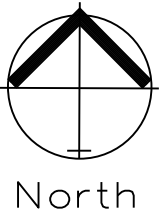
PROPERTY DESCRIPTION

Lots 1 & 2, Dahmer Development, Lots 1 - 3, a subdivision as recorded in the Office of the Recorder, Jackson County, Missouri



LOCATION MAP  
SECTION 6-T41N-R31W

Not to Scale



COVER SHEET  
SCALE: 1" = 30'

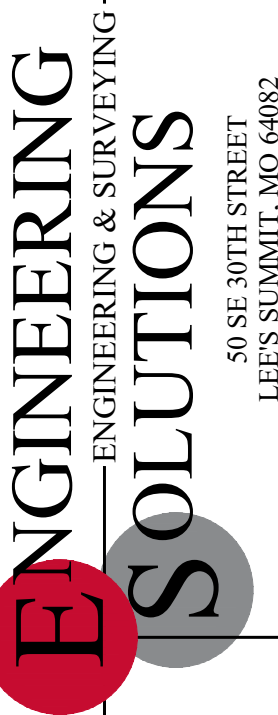
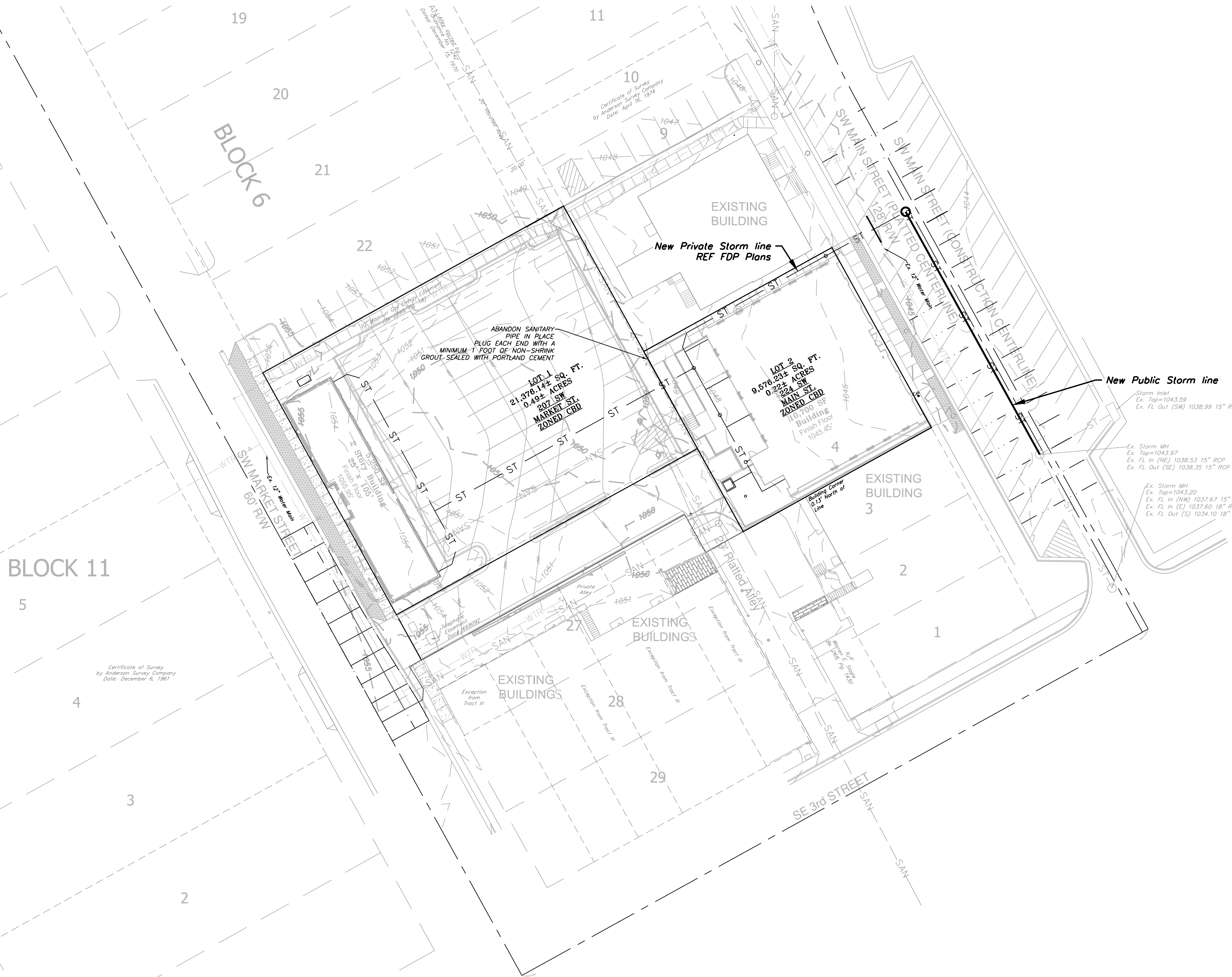
INDEX OF SHEETS:

- C.300 ~ COVER SHEET
- C.301 ~ STORM SEWER GENERAL LAYOUT
- C.302 ~ STORM SEWER PLAN AND PROFILE
- C.303 ~ EXISTING WATER LINE PLAN AND PROFILE
- C.304 ~ CONCRETE JOINT PLAN
- C.305 ~ CONCRETE JOINT PLAN
- C.306 ~ TRAFFIC CONTROL PLAN GENERAL LAYOUT
- C.307 ~ TRAFFIC CONTROL STANDARD DETAILS

ADDED CONCRETE JOINT PLAN TO INDEX OF SHEETS.

OWNER:  
TUSTIN LLC  
Dusty Dahmer  
12650 S PFLUM RD STE 201  
OLATHE KS

ALL PAVING ON THE PARKING LOT WILL COMPLY WITH THE UNIFIED DEVELOPMENT ORDINANCE ARTICLE 8 IN TERMS OF PAVING THICKNESS AND BASE



Professional Registration  
Missouri  
Engineering 2005002188-D  
Surveying 2005008182-D  
Kansas  
Engineering E-1895  
Surveying LS-218  
Oklahoma  
Engineering 6254  
Nebraska  
Engineering CA2821

Construction Plans for:  
Reece Nichols  
Lee's Summit, Jackson County, Missouri

Project AND  
NICHOLS, LSWO  
Issue Date:  
January 29, 2019

Cover Sheet  
Public Storm Construction Plans for:  
Reece Nichols  
Lee's Summit, Jackson County, Missouri

Matthew J. Schlicht  
MO PE 2006019708  
KS PE 19071  
OK PE 25226

REVISIONS  
Revised 4/2/19  
Revised 5/8/19  
Revised 6/6/19