

JOB \_\_\_\_\_ TYPE \_\_\_\_\_

NOTES \_\_\_\_\_ APPROVALS \_\_\_\_\_

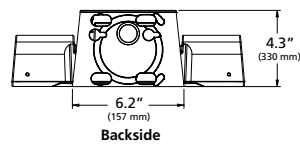
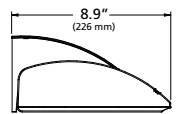
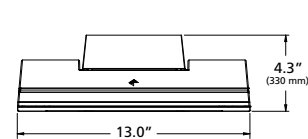
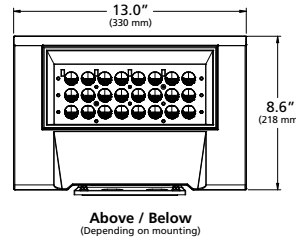
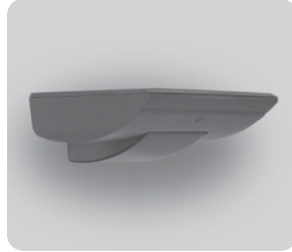
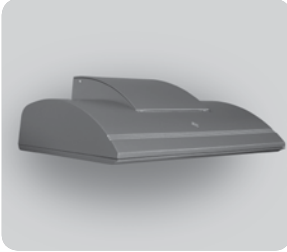
### FEATURES

- -5° to +10° tilt adjustment
- High performance optics deliver up to 8,500 lumens
- up or down mountable without modification
- Diffused lens option
- Programmable occupancy sensor (dimming)
- NX and SiteSync wireless controls
- Up to 130 lumens per watt

### Certifications



### SPECIFICATIONS



Weight: 20 lbs

### ORDERING CODE

<input type="text"/>	<input type="text"/>	<input type="text"/>	<input type="text"/>	<input type="text"/>	<input type="text"/>	<input type="text"/>	<input type="text"/>
<b>Fixture</b>	<b>Mounting</b>	<b>Source</b>	<b>Wattage</b>	<b>Light Engine</b>	<b>Distribution</b>	<b>Voltage</b>	<b>Fixture Finish</b>
WDS Wall Director Small	D Down U <sup>1</sup> Up	24L 24 LEDs	30 30 Watts 40 40 Watts 60 60 Watts 75 75 Watts	3K7 3000K/70CRI 3K8 3000K/80CRI 4K7 4000K/70CRI 4K8 4000K/80CRI 5K7 5000K/70CRI	1 Type I 2 Type II 3 Type III 4W Type IV Wide 4F Type IV Forward WG <sup>2</sup> Wall Graze SP Spot/Column FTD <sup>2</sup> Forward Throw Diffuse WTD <sup>2</sup> Wide Throw Diffuse	UNV 120-277V 347 <sup>3</sup> 347V 480 <sup>3</sup> 480V	BL Black DB Dark Bronze GT Graphite LG Light Gray PS Platinum Silver TT Titanium WH White CC Custom Color, consult representative
<input type="text"/>	<input type="text"/>	<input type="text"/>	<input type="text"/>	<input type="text"/>	<input type="text"/>	<input type="text"/>	<input type="text"/>
<b>Control Options</b>	<b>Options</b>	<b>Accessories</b>					
PC Button Photocell SCP-8F Programmable Occ. Sensor (<9' height) SCP-20F Programmable Occ. Sensor (9' - 20' height) SWP <sup>4</sup> SiteSync Wireless Pre-Commission NXWE <sup>5</sup> NX Wireless Enabled	EM <sup>4</sup> Internal Emergency Battery Backup SF Single Fuse & Fuse holder DF Double Fuse & Fuse holder	<b>SCPREMOTE</b> SCP configuration tool <b>SWUSB</b> SiteSync Software on USB <b>SWTAB</b> SiteSync Windows® Tablet <b>SWBRG</b> SiteSync Software Bridge Node					

Microsoft, Encarta, MSN, and Windows are either registered trademarks or trademarks of Microsoft Corporation in the United States and/or other countries.

<sup>1</sup> Not available with EM option or with SCP & SWPM sensor options.  
<sup>2</sup> WG, FTD, and WTD come with a diffused lens.  
<sup>3</sup> 60 and 75 watt versions only  
<sup>4</sup> Universal voltage only (120-277), not available with PC option.  
<sup>5</sup> 120-347V only

## LUMINAIRE PERFORMANCE

LED #	Nominal Lumen Package	Nominal Wattage	Lens Options	Distribution	3000K					4000K					5000K				
					Lumen	BUG Rating			lm/w	Lumen	BUG Rating			lm/w	Lumen	BUG Rating			lm/w
						B	U	G			B	U	G			B	U	G	
24L	3,000	29	Clear Lens	1	3433	1	0	0	119	3519	1	0	0	122	3560	1	0	0	123
				2	3351	1	0	1	116	3436	1	0	1	119	3475	1	0	1	120
				3	3340	1	0	1	116	3424	1	0	1	119	3463	1	0	1	120
				4F	3343	1	0	1	116	3427	1	0	1	119	3466	1	0	1	120
				4W	3172	1	0	1	110	3252	1	0	1	113	3289	1	0	1	114
			SP	3600	3	0	0	125	3691	3	0	0	128	3733	3	0	0	129	
			Diffuse Lens	WG	3372	2	0	1	117	3456	2	0	1	120	3496	2	0	1	121
				FTD	2855	1	0	1	99	2927	1	0	1	101	2960	1	0	1	103
	WTD	3151		1	0	1	109	3230	1	0	1	112	3267	1	0	1	113		
	4,500	42	Clear Lens	1	4593	1	0	0	111	4708	1	0	0	113	4762	1	0	0	115
				2	4484	1	0	1	108	4596	1	0	1	111	4649	1	0	1	112
				3	4468	1	0	1	108	4581	1	0	1	110	4633	1	0	1	112
				4F	4472	1	0	1	108	4585	1	0	1	110	4637	1	0	1	112
				4W	4244	1	0	1	102	4350	1	0	1	105	4400	1	0	1	106
			SP	4817	3	0	0	116	4938	3	0	0	119	4994	3	0	0	120	
			Diffuse Lens	WG	4511	2	0	1	109	4624	2	0	1	111	4677	2	0	1	113
				FTD	3819	1	0	1	92	3915	1	0	1	94	3960	1	0	1	95
	WTD	4215		1	0	1	102	4321	1	0	1	104	4371	1	0	1	105		
	6,000	59	Clear Lens	1	6333	1	0	1	108	6492	1	0	1	111	6566	1	0	1	112
				2	6182	1	0	1	106	6338	1	0	1	108	6410	1	0	1	110
				3	6161	1	0	2	105	6316	1	0	2	108	6388	1	0	2	109
				4F	6166	1	0	2	105	6321	1	0	2	108	6393	1	0	2	109
				4W	5851	1	0	2	100	5998	1	0	2	103	6067	1	0	2	104
			SP	6641	4	0	0	114	6808	4	0	0	116	6886	4	0	0	118	
			Diffuse Lens	WG	6219	3	0	1	106	6376	3	0	1	109	6449	3	0	1	110
				FTD	5266	1	0	1	90	5398	2	0	1	92	5460	2	0	1	93
	WTD	5812		1	0	1	99	5958	1	0	1	102	6026	1	0	1	103		
	7,500	74	Clear Lens	1	7879	1	0	1	106	8077	1	0	1	109	8170	1	0	1	110
2				7692	1	0	1	104	7885	1	0	1	107	7975	1	0	2	108	
3				7665	1	0	2	104	7858	1	0	2	106	7948	1	0	2	107	
4F				7672	1	0	2	104	7865	1	0	2	106	7955	1	0	2	107	
4W				7280	1	0	2	98	7463	1	0	2	101	7548	1	0	2	102	
SP			8263	4	0	0	112	8471	4	0	0	114	8567	4	0	0	116		
Diffuse Lens			WG	7738	3	0	1	105	7933	3	0	1	107	8023	3	0	1	108	
			FTD	6552	2	0	1	89	6717	2	0	1	91	6793	2	0	2	92	
	WTD	7231	2	0	1	98	7413	2	0	1	100	7498	2	0	1	101			

Electrical Characteristics										Dimming						
System Watts	Current	Line Voltage		Amps AC						Min. Power Factor	Max THD (%)	Dimming Range	Source current out		Absolute voltage	
		VAC	Hz	120	208	240	277	347	480				Min	Max	Min	Max
29	350mA	120-480	50/60	0.24	0.14	0.12	0.10	0.08	0.06	>0.9	20	10% to 100%	0mA	1mA	0V	10V
42	500mA			0.38	0.22	0.19	0.16	0.13	0.09							
59	725mA			0.48	0.27	0.24	0.21	0.16	0.12							
74	925mA			0.67	0.39	0.34	0.29	0.23	0.17							

## TM-21 LIFETIME CALCULATION

Projected Lumen Maintenance (25°C / 77°F)						
HOURS	0	25,000	36,000	50,000	100,000	Reported L70
Projected Lumen Maintenance	100%	97%	95%	93%	86%	> 60,000 hrs

Kim Lighting reserves the right to change specifications without notice.

## SPECIFICATIONS

### Housing

- Optical housing is a one-piece, die-cast low copper (<0.6%) aluminum alloy with integral heat sink. The housing rotates against mounting arm housing to provide -5° to 10° of adjustment with degree markers cast into the housing. At 0 adjustment, lens is totally concealed from view above horizontal with fixture mounted in the downward position.
- Mounting arm housing is one-piece die-cast, low copper (<0.6%) aluminum alloy with provisions for tilt mechanism. Mounting arm fastens to the mounting plate with keyhole slots freeing both hands for securing and wiring. One stainless steel socket-head screw on the tilt mechanism frees the optical housing to rotate for aiming. Tightening the screws locks the housing and lens frame together with sealing provided by a silicone gasket. For visual aiming, adjustment may be accomplished with the fixture on.
- Lens Frame is a one-piece, die-cast low copper (<0.6%) aluminum alloy with integral cooling fins to dissipate driver thermal.
- Luminaire housing shall be free of any visible heat fins, hardware or fasteners.
- Bracketry and hardware shall be stainless steel.

### Optical Array

- LEDs shall be mounted to a metal printed circuit board assembly (MCPCB).
- Optical lenses shall be clear injection molded PMMA acrylic.
- Secondary lens is impact resistant 1/8" tempered glass with anti-reflective coating.

### Electronic Module

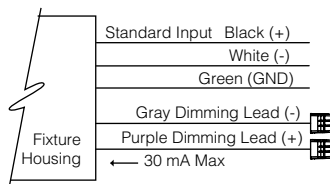
- Drivers shall be in direct contact with the die-cast aluminum lens frame across the entire surface area of the widest face for maximum thermal transfer.
- "Thermal Shield", secondary side, thermistor provides protection for the sustainable life of LED module and electronic components.
- Drivers shall have greater than a 0.9 power factor, less than 20% harmonic distortion, and be suitable for operation in -40°C to 40°C ambient environments
- Luminaires shall have integral surge protection that shall be U.L. recognized and have a surge current rating of 10,000 Amps using the industry standard 8/20uSec wave and surge rating of

372J. Surge protection device shall be wired in series.

- Drivers shall be U.L. recognized.
- Drivers shall not be compatible with current sourcing dimmers, consult factory for current list of known compatible dimming systems approved dimmers include Lutron Diva AVTV, Lutron Nova NFTV and NTFTV.

### Dimming

- 10% to 100% dimming by the use of standard 0-10V interface driver.
- The thermal shield works in conjunction with the control system to assure that overheating will not harm the LEDs.
- The wiring harness is connected with the use of the Purple lead as the positive (+) and the Grey lead as the negative (-) to an available control signal (by others).



### Specifications

- Luminaire shall be capable of operating at 100% brightness in a 40°C environment. Both driver and optical array shall have integral thermal protection that will dim the luminaire upon detection of temperatures in excess of 85°C.
- Luminaires not configured with a control system shall be provided with 0-10 purple and gray dimming leads.

### Controls

- Optional universal voltage (120-277V) button photocontrol for dusk to dawn energy savings. Photocontrol is factory installed inside the housing with a fully gasketed sensor on the side wall. For multiple fixture mountings, one fixture is supplied with a photocell to operate the others.
- Occupancy Sensor shall be programmable and use passive infrared (PIR) sensing technology that reacts to changes in infrared energy (moving body heat) within the coverage area. Careful consideration must be given to obstructions that may block the sensor's line of sight.
- Factory default settings for SCP option shall be:
  - High mode: 10V - Low mode: 1V - Ramp-up

rate: disabled - Fade-down rate: disabled - Photocell: Off - Sensitivity: Full - Time Delay: Fade to low: 5 minutes - Time Delay: Fade to off: 1 hour

- The SCP enables any wall mounted luminaire, in excess of 30 watts, to meet California Title 24 requirements with integral 10KA surge protection for added reliability and serviceability. For more detail: [http://www.aal.net/products/sensor\\_control\\_programmable](http://www.aal.net/products/sensor_control_programmable)
- SiteSync™ wireless control system for reduction in energy and maintenance cost while optimizing light quality 24/7. See ordering information or visit [www.hubbellighting.com/products/sitesync](http://www.hubbellighting.com/products/sitesync) for more details.
- Hubbell Control Solutions' NX Distributed Intelligence™ lighting control platform utilizes a Distributed Network Architecture (DNA) that connects intelligent devices including luminaires, controllers, panels, occupancy sensors, photocells, wall switches and dimmers, creating a system with an unmatched level of reliability, scalability and simplicity

### Options

- Integral battery backup provides emergency path of egress lighting for the required 90 minutes for 0°C ambient environments or -20°C with thermal jacket.

- Fusing:

**SF** for 120, 277 and 347 Line Volts

**DF** for 208, 240 and 480 Line Volts

High temperature fuse holders factory installed

inside the fixture housing. Fuse is included.

### Mounting and Installation

- JUNCTION BOX: Standard with steel, quick-mount junction box plate that mounts directly to 4" J-Box
- Mounting plate is stainless steel and features a one-piece EPDM gasket on back side of plate to firmly seal fixture to wall surface, forbidding entry of moisture and particulates.

### Servicing

- Housing shall be able to hang freely in an open service position for inspection of primary wire connections. Once in service position, the housing shall be able to be removed for service by sliding the assembly to the left (for down mounting) or to the right (for up mounting) and disconnecting the wiring plugs.

Kim Lighting reserves the right to change specifications without notice.

## SPECIFICATIONS

- Driver assembly shall be mounted to a prewired internal tray with quick disconnects for removal. Fusing SF for 120, 277, and 347 line volts DF for 208, 240, and 480 line volts high temperature fuse holders factory installed inside the fixture housing. Fuse is included.

### Finish:

- Luminaire finish shall consist of a five stage pretreatment regimen with a polymer primer sealer, oven dry off, and top coated with a thermoset super TGIC polyester powder coat finish.
- Luminaire finish shall meet the AAMA 605.2 performance specification which includes passing a 3000 hour salt spray test for corrosion resistance.
- Standard colors include (BL) Black, (DB) Dark Bronze, (GT) Graphite, (LG) Light Gray, (PS) Platinum Silver, (TT) Titanium, (WH) White, and (CC) Custom Color (Include RAL#).

### Certifications and Listings

- UL1598, UL 8750 and Canadian CSA Std. C22.2 no.250.
- IDA approved, down light only, 3000K and warmer CCTs only.
- 1.5G rated
- IP65 Compliant

### CAUTION:

- Fixtures must be grounded in accordance with national, state and/or local electrical codes, Failure to do so may result in serious personal injury.

### WARRANTY:

- For full warranty see <http://www.hubbellighting.com/resources/warranty>

Kim Lighting reserves the right to change specifications without notice.