

SUMMIT ORCHARD, LOTS 4A-4E

REPLAT OF LOT 4, SUMMIT ORCHARD-FIRST PLAT, LOTS 1-4 & TRACT "A",
A SUBDIVISION IN THE CITY OF LEE'S SUMMIT, JACKSON COUNTY, MISSOURI

DEVELOPER: SCOTT G. CHESMAN, 1015 E. 29th St., Lee's Summit, MO 64086
 PLAT REVISION: REVISION 1 - CORRECTED THE PROPERTY LINES AND ADJUSTED THE SAME TO BE CONFORMANT WITH THE MAPS SHOWN ON THIS PLAT AND THE PROPERTY SHALL REMAIN IN KIND AS SHOWN ON SAID MAPS.

THE CITY OF LEE'S SUMMIT HAS REVIEWED THIS PLAT AND HAS DETERMINED THAT THE SAME IS IN ACCORDANCE WITH THE CITY CHARTER AND ORDINANCES AND THAT THE SAME DOES NOT VIOLATE ANY CITY ORDINANCES. THE CITY ENGINEER HAS REVIEWED THIS PLAT AND HAS DETERMINED THAT THE SAME IS IN ACCORDANCE WITH THE CITY CHARTER AND ORDINANCES AND THAT THE SAME DOES NOT VIOLATE ANY CITY ORDINANCES. THE CITY ENGINEER HAS REVIEWED THIS PLAT AND HAS DETERMINED THAT THE SAME IS IN ACCORDANCE WITH THE CITY CHARTER AND ORDINANCES AND THAT THE SAME DOES NOT VIOLATE ANY CITY ORDINANCES.

THE CITY ENGINEER HAS REVIEWED THIS PLAT AND HAS DETERMINED THAT THE SAME IS IN ACCORDANCE WITH THE CITY CHARTER AND ORDINANCES AND THAT THE SAME DOES NOT VIOLATE ANY CITY ORDINANCES. THE CITY ENGINEER HAS REVIEWED THIS PLAT AND HAS DETERMINED THAT THE SAME IS IN ACCORDANCE WITH THE CITY CHARTER AND ORDINANCES AND THAT THE SAME DOES NOT VIOLATE ANY CITY ORDINANCES.

THE CITY ENGINEER HAS REVIEWED THIS PLAT AND HAS DETERMINED THAT THE SAME IS IN ACCORDANCE WITH THE CITY CHARTER AND ORDINANCES AND THAT THE SAME DOES NOT VIOLATE ANY CITY ORDINANCES. THE CITY ENGINEER HAS REVIEWED THIS PLAT AND HAS DETERMINED THAT THE SAME IS IN ACCORDANCE WITH THE CITY CHARTER AND ORDINANCES AND THAT THE SAME DOES NOT VIOLATE ANY CITY ORDINANCES.

THE CITY ENGINEER HAS REVIEWED THIS PLAT AND HAS DETERMINED THAT THE SAME IS IN ACCORDANCE WITH THE CITY CHARTER AND ORDINANCES AND THAT THE SAME DOES NOT VIOLATE ANY CITY ORDINANCES. THE CITY ENGINEER HAS REVIEWED THIS PLAT AND HAS DETERMINED THAT THE SAME IS IN ACCORDANCE WITH THE CITY CHARTER AND ORDINANCES AND THAT THE SAME DOES NOT VIOLATE ANY CITY ORDINANCES.

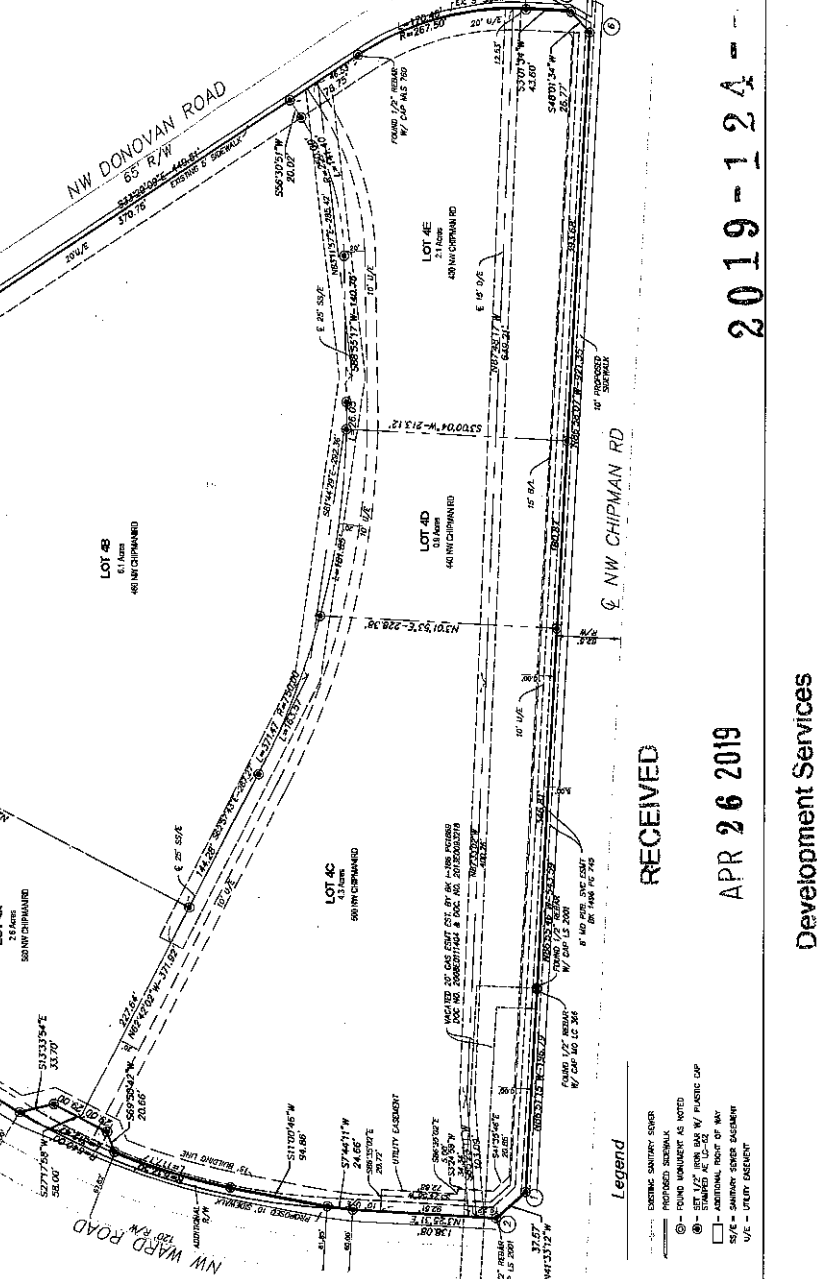
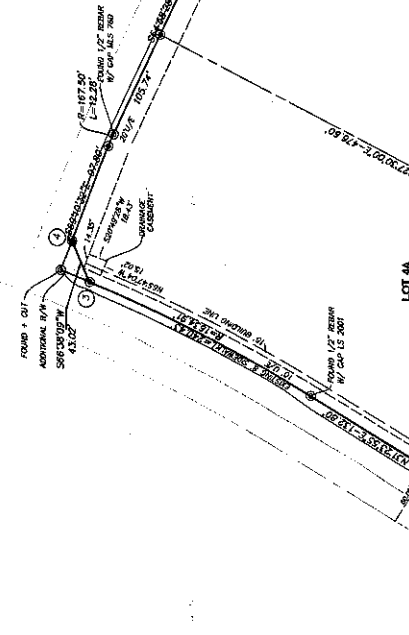
THE CITY ENGINEER HAS REVIEWED THIS PLAT AND HAS DETERMINED THAT THE SAME IS IN ACCORDANCE WITH THE CITY CHARTER AND ORDINANCES AND THAT THE SAME DOES NOT VIOLATE ANY CITY ORDINANCES. THE CITY ENGINEER HAS REVIEWED THIS PLAT AND HAS DETERMINED THAT THE SAME IS IN ACCORDANCE WITH THE CITY CHARTER AND ORDINANCES AND THAT THE SAME DOES NOT VIOLATE ANY CITY ORDINANCES.

THE CITY ENGINEER HAS REVIEWED THIS PLAT AND HAS DETERMINED THAT THE SAME IS IN ACCORDANCE WITH THE CITY CHARTER AND ORDINANCES AND THAT THE SAME DOES NOT VIOLATE ANY CITY ORDINANCES. THE CITY ENGINEER HAS REVIEWED THIS PLAT AND HAS DETERMINED THAT THE SAME IS IN ACCORDANCE WITH THE CITY CHARTER AND ORDINANCES AND THAT THE SAME DOES NOT VIOLATE ANY CITY ORDINANCES.

THE CITY ENGINEER HAS REVIEWED THIS PLAT AND HAS DETERMINED THAT THE SAME IS IN ACCORDANCE WITH THE CITY CHARTER AND ORDINANCES AND THAT THE SAME DOES NOT VIOLATE ANY CITY ORDINANCES. THE CITY ENGINEER HAS REVIEWED THIS PLAT AND HAS DETERMINED THAT THE SAME IS IN ACCORDANCE WITH THE CITY CHARTER AND ORDINANCES AND THAT THE SAME DOES NOT VIOLATE ANY CITY ORDINANCES.

LOT AREA	LOT AREA	LOT AREA	LOT AREA	LOT AREA	LOT AREA
LOT 4A	13,298.50 SQ FT	24,408.00	28,789.50 SQ FT	24,408.00	24,408.00
LOT 4B	28,789.50 SQ FT	24,408.00	24,408.00	24,408.00	24,408.00
LOT 4C	24,408.00	24,408.00	24,408.00	24,408.00	24,408.00
LOT 4D	24,408.00	24,408.00	24,408.00	24,408.00	24,408.00
LOT 4E	24,408.00	24,408.00	24,408.00	24,408.00	24,408.00
TOTAL	124,910.00	124,910.00	124,910.00	124,910.00	124,910.00

POINT	NORTHINGS	EASTINGS
1	30000.00	30000.00
2	30000.00	30000.00
3	30000.00	30000.00
4	30000.00	30000.00
5	30000.00	30000.00
6	30000.00	30000.00



ANDERSON ENGINEERING
 EMPLOYEE OWNED

ENGINEERS - SURVEYORS - LABORATORIES - DRILLING
 514 W 151st Street, Kansas City, MO 64148 - Phone 816-777-6660
 A LICENSED MISSOURI ENGINEERING SURVEYING CORPORATION - LC02

SECTION	TOWNSHIP	RANGE	COUNTY	DATE	JOB NO.
1	13	23	JACKSON	13/17/19	19190000
DRAWING NO.					19011001
DRAWN BY					CD
CHECKED BY					SE

SCOTT G. CHESMAN, 1015 E. 29th St., Lee's Summit, MO 64086

2019-124

RECEIVED
 APR 26 2019
 Development Services

Legend

- EXISTING SANITARY SEWER
- PROPOSED SEWERLICK
- FOUND MONUMENT AS NOTED
- SETBACK LINE AS NOTED
- ADDITIONAL FOOT OF WAY
- SANITARY SEWER EASEMENT
- UTILITY EASEMENT