

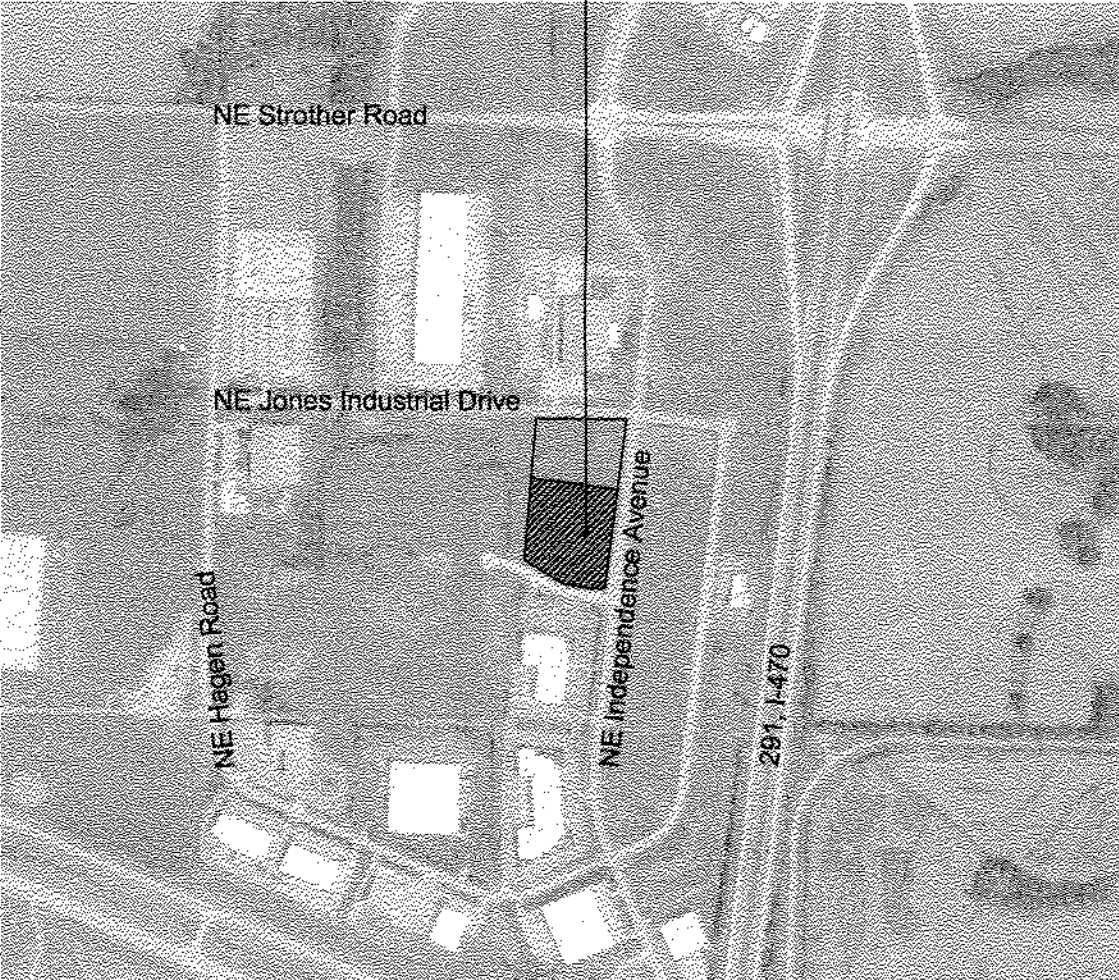
general notes

1. All construction shall conform to the standards and specifications of Lee's Summit, Missouri.
2. The general contractor shall contact all utility companies prior to the start of construction and verify the location and depth of any utilities that may be encountered during construction.
3. The contractor shall field verify exist. surface & subsurface ground conditions prior to start of construction.
4. Slopes shall maintain a maximum 3:1 slope.
5. The contractor shall be responsible for obtaining all required permits, paying all fees, and otherwise complying with all applicable regulations governing the project.
6. Place silt fence per civil for erosion control.
7. Provide a temporary gravel access drive to prevent mud from being deposited onto the adjacent road.
8. Prior to installing any structure on a public storm sewer, the contractor shall submit shop drawings for the structure(s). Installation shall not occur until drawings have been approved by public works.
9. Prior to installing, constructing, or performing any work on the public storm sewer line (including connecting private drainage to the storm system) contact the city for inspection of the work. Contact must be made at least 48 hours prior to the start of work.
10. Connections to the public storm sewer between structures will not be permitted.

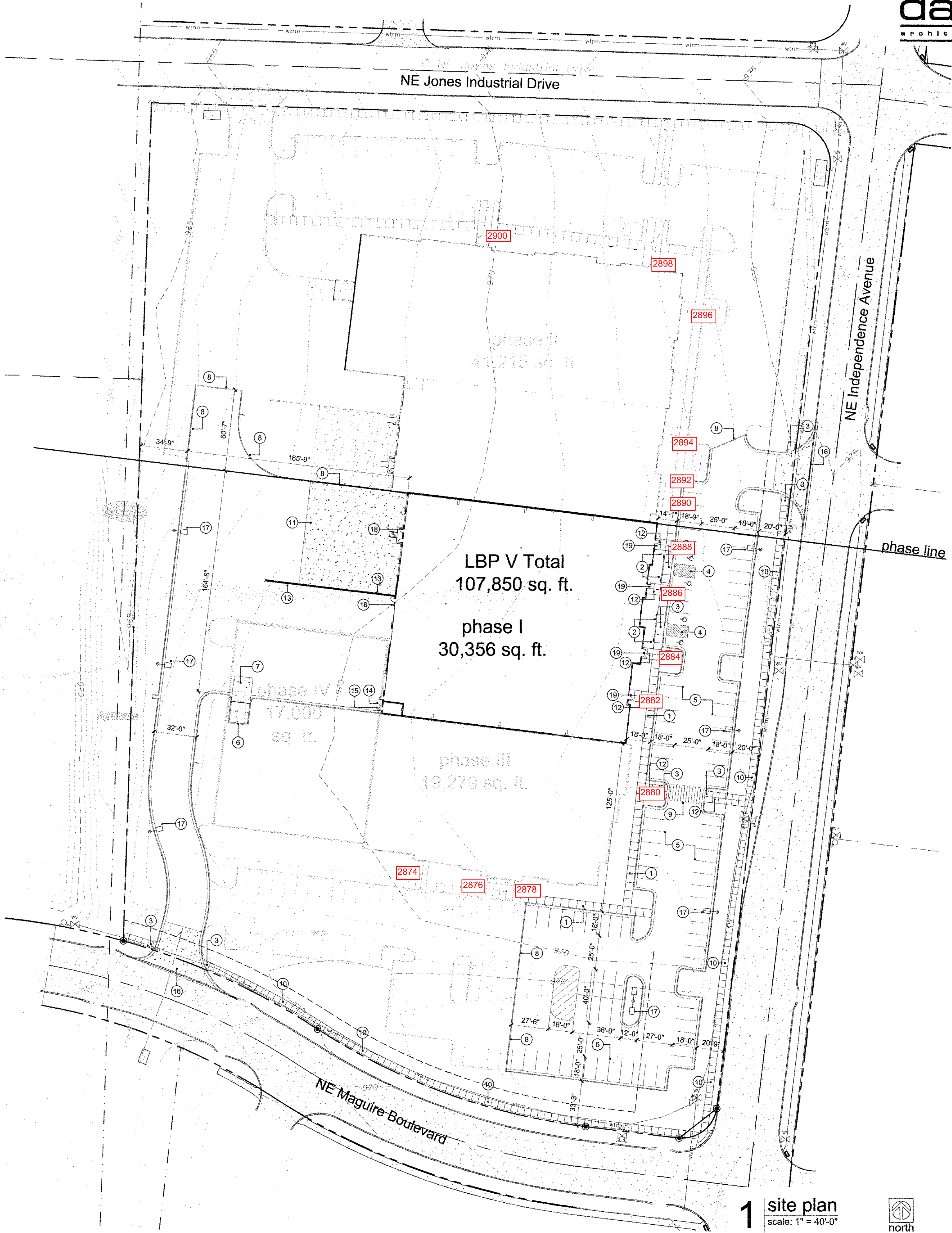
construction notes

1. 6'-0" wide concrete sidewalk. 4" thick with 6x6 10/10 wwf steel mesh. Control joints at 6'-0" o.c. Broom finish for non-slip surface.
2. Handicap parking signage. Mount sign at not more than 60" a.f.g. to bottom. Sign to contain the universal handicap symbol and "van accessible" as required per ADA.
3. Furnish and install ADA accessible ramp and sidewalk per civil.
4. Handicap striping and universal symbol painted white with 4" stroke.
5. Parking lot striping to be painted white with 4" stroke.
6. Furnish & install trash enclosure per detail 1/A6.2.
7. Furnish & install concrete apron per civil.
8. Construct temporary asphalt curb per civil.
9. Furnish and install crosswalk striping to be painted white.
10. 5'-0" wide concrete sidewalk. 4" thick with 6x6 10/10 wwf steel mesh. Control joints at 5'-0" o.c. Broom finish for non-slip surface.
11. Furnish and install concrete dock apron per civil.
12. 8'-0" wide concrete sidewalk. 4" thick with 6x6 10/10 wwf steel mesh. Control joints at 5'-0" o.c. Broom finish for non-slip surface.
13. Furnish and install concrete retaining wall with 42" high galvanized steel guardrail per detail 6/A6.1.
14. Furnish and install a Knox Box at 6'-0" a.f.g. over the FDC for fire department access.
15. Furnish and install lettering on the door to the riser room to read "Sprinkler Room" with 4" high letters.
16. Furnish & install new drive approach, sawcut existing curb & gutter as required to install drive approach. Match new approach elevation with existing surface.
17. Exterior parking lot lighting - McGraw Edison - Ventus LED fixture with cutoff on 26' high pole with 24" high 18" dia. concrete base. Fixture to have flat lens and no-tilt, non adjustable mounting brackets.
18. Exterior wall mounted lighting - McGraw Edison - Ventus LED fixture with cutoff mounted at 14'-0" a.f.f. Fixture to have flat lens and no-tilt, non adjustable mounting brackets.
19. Exterior wall mounted lighting - McGraw Edison - Ventus LED fixture with cutoff mounted to bottom of canopy. Coordinate wiring within tube steel of canopy. Fixture to have flat lens and no-tilt, non adjustable mounting brackets.

project location



2 vicinity map
not to scale

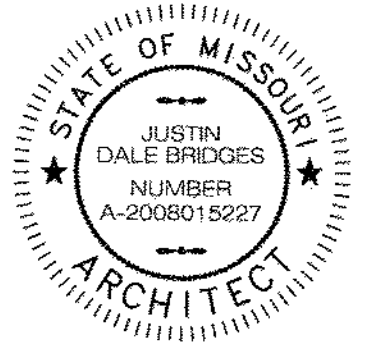


1 site plan
scale: 1" = 40'-0"



davidson
architecture & engineering

4301 Indian Creek Parkway
Overland Park, KS 66207
phone: 913.451.9390
fax: 913.451.9391
www.davidsonae.com



a new office / warehouse building

LBP V - B

NE Maguire Blvd. & NE Independence Avenue
Lee's Summit, Missouri

date
06.23.2014
drawn by
jrp
checked by
DAE
revisions

NOT FOR CONSTRUCTION

sheet number

A1.1

drawing type
permit
project number
10079