



## KC13XC327 INSTALLATION AUDIT

Anthony Cuomo

### STRUCTURE INFORMATION:

LAT:	38° 54' 33"
LONG:	-94° 26' 54"
ELEV:	1,010'
SITE TYPE:	WATER TOWER
COUNTY:	JACKSON
JURISDICTION:	CITY OF LEES SUMMIT
OCCUPANCY GROUP:	U
CONSTRUCTION TYPE:	VB
ERICSSON CONSTRUCTION PHASE:	TYPE 1

### **Peculiar Water Tower (KC13XC327 Sprint) Antenna/RRU/ Grounding Audit**

- Antenna/RRU Attachment audit performed at **KC13XC327** on the Antenna attachment to tower per the scope of installation completed by TMO contractor.
- Each Antenna/RRU/Equipment Mount was quality checked for secure attachment to tower and compression of lockwashers/Flats under torqued bolts as well as it's installation location with regard to specified construction documentation.
- Grounding points inspected to verify existence at called out and common locations for industry grounding standards.
- Scope Audit – A review of work as compared to the construction documents provided to assess work done as it was called out-

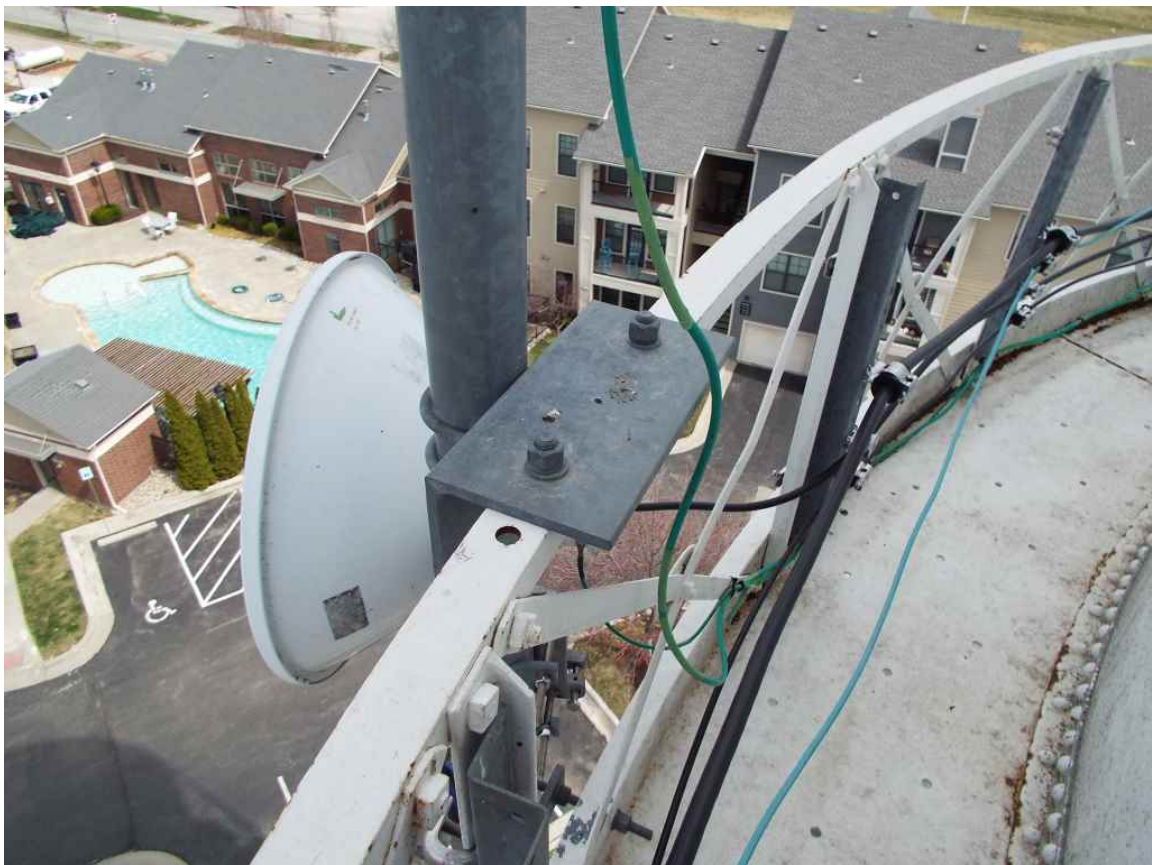


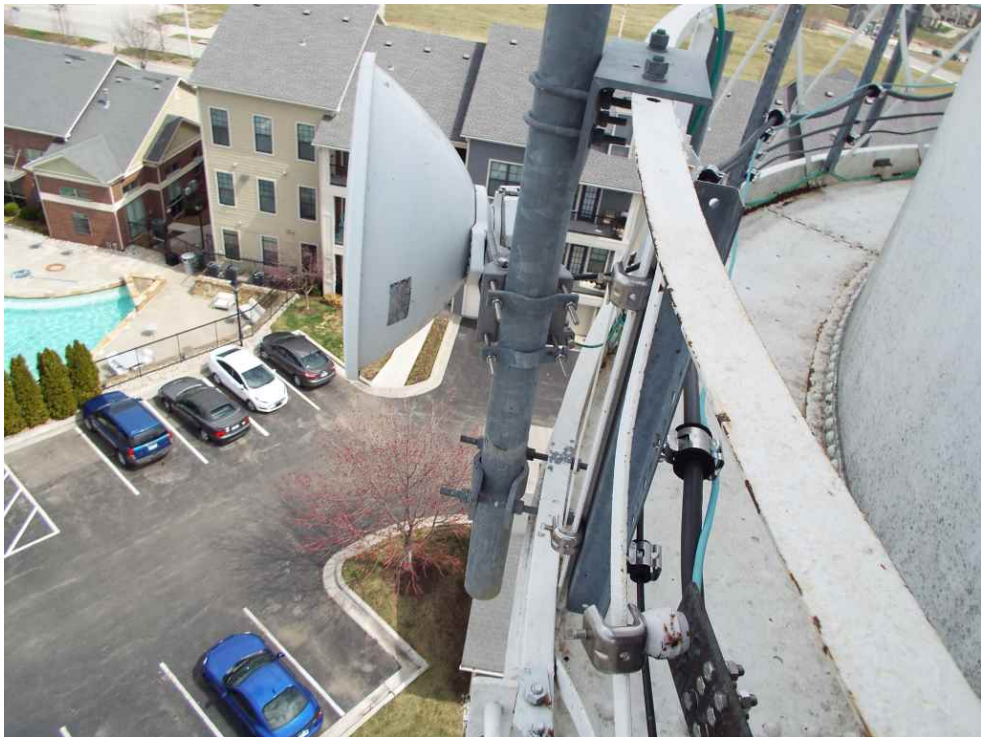
## ❖ Antenna/RRU Mounting

### Equipment Photo's –













**Conclusion** – No deficiencies in antenna, radio, or other equipment attachment were noted as it pertains to the provided scope of the installation. Grounding to tower, tower to ground, platform/shelter grounding noted as in spec.

**Aerial Infrastructure Services, Inc.**



1150 W. 151st St Suite B  
Olathe, KS 66061