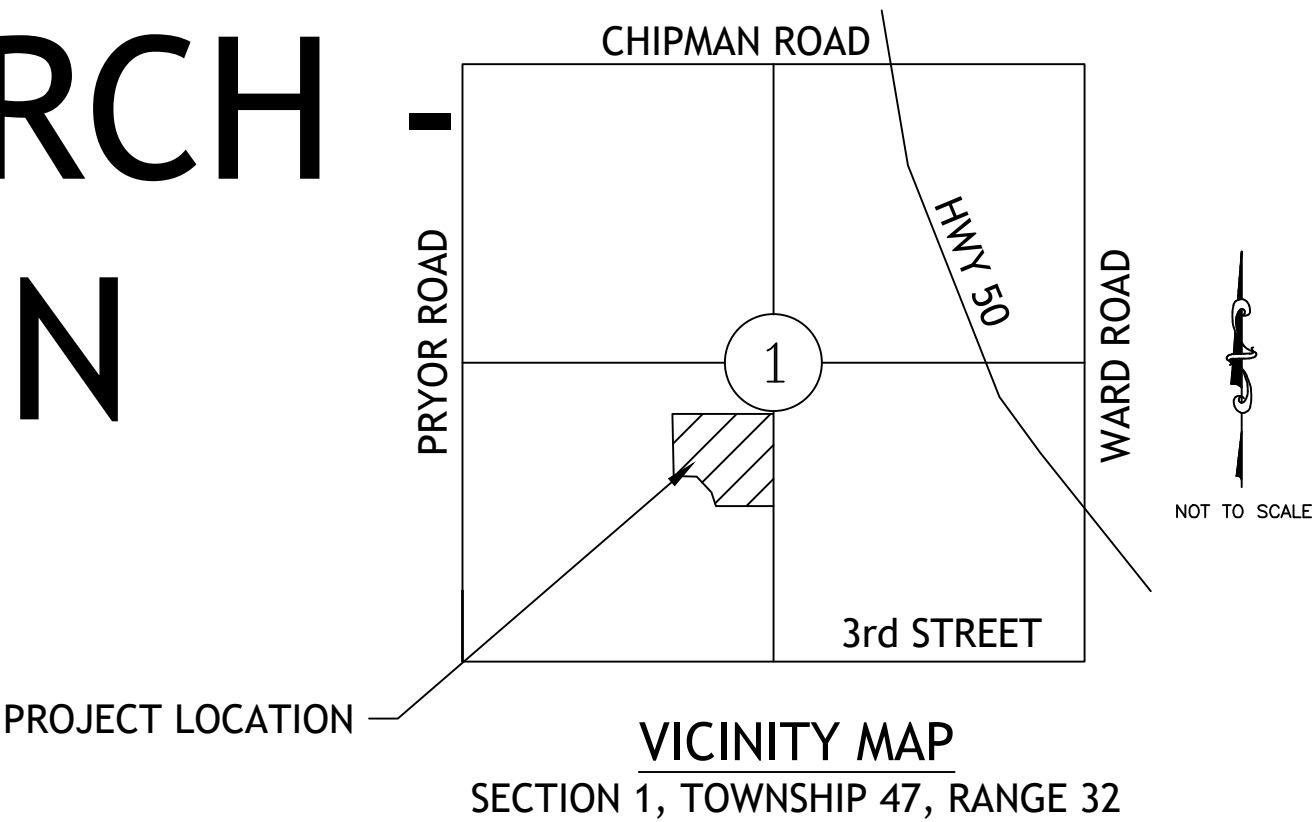


OUR LADY OF THE PRESENTATION CHURCH SCHOOL ADDITION AND RENOVATION

CITY OF LEE'S SUMMIT, JACKSON COUNTY, MISSOURI

FINAL DEVELOPMENT PLANS



SHEET INDEX:

- C001 COVER SHEET
- C002 GENERAL NOTES
- C003 DEMOLITION PLAN
- C004 DIMENSION PLAN
- C005 UTILITY PLAN
- C006 GRADING PLAN
- C007 STORM LINE A PLAN AND PROFILE
- C008 DETAILS
- C009 DETAILS
- C010 DRAINAGE AREA MAP

SURVEYOR:

OWNER:

150 NW MURRAY RD
LEE'S SUMMIT, MO 64081
(816) 251-1150
OLPLSSCHOOL.ORG

ESTIMATED QUANTITIES			
ITEM	UNITS	PLAN	AS-BUILT
STREET AND STORM			
Grading 187(C), 9(F)*	Cu. Yds.	178(C)	
Asphalt Pavement	Sq. Yds.	824	
Alternate Pavement Area	Sq. Yds.	83	
CG-1 Curb	Lin. Ft.	243	
Alternate CG-1 Curb	Lin. Ft.	85	
24" DIA Nyloplast Grate Inlet	Ea.	6	
24"X24" Nyloplast Junction Box	Ea.	1	
15" HDPE	Lin. Ft.	453	
Concrete Sidewalk	Sq.Ft.	438	
Retaining Wall	Lin. Ft.	93	
6" Fire line	Lin. Ft.	25	
Gas Line	Lin. Ft.	150	
Gate Single Rail	Ea.	1	
Pavement Removal	Sq. Yds.	950	
Curb Removal	Lin. Ft.	158	
Retaining Wall Removal	Lin. Ft.	44	

* No shrinkage or swell calculated for earthwork quantities.

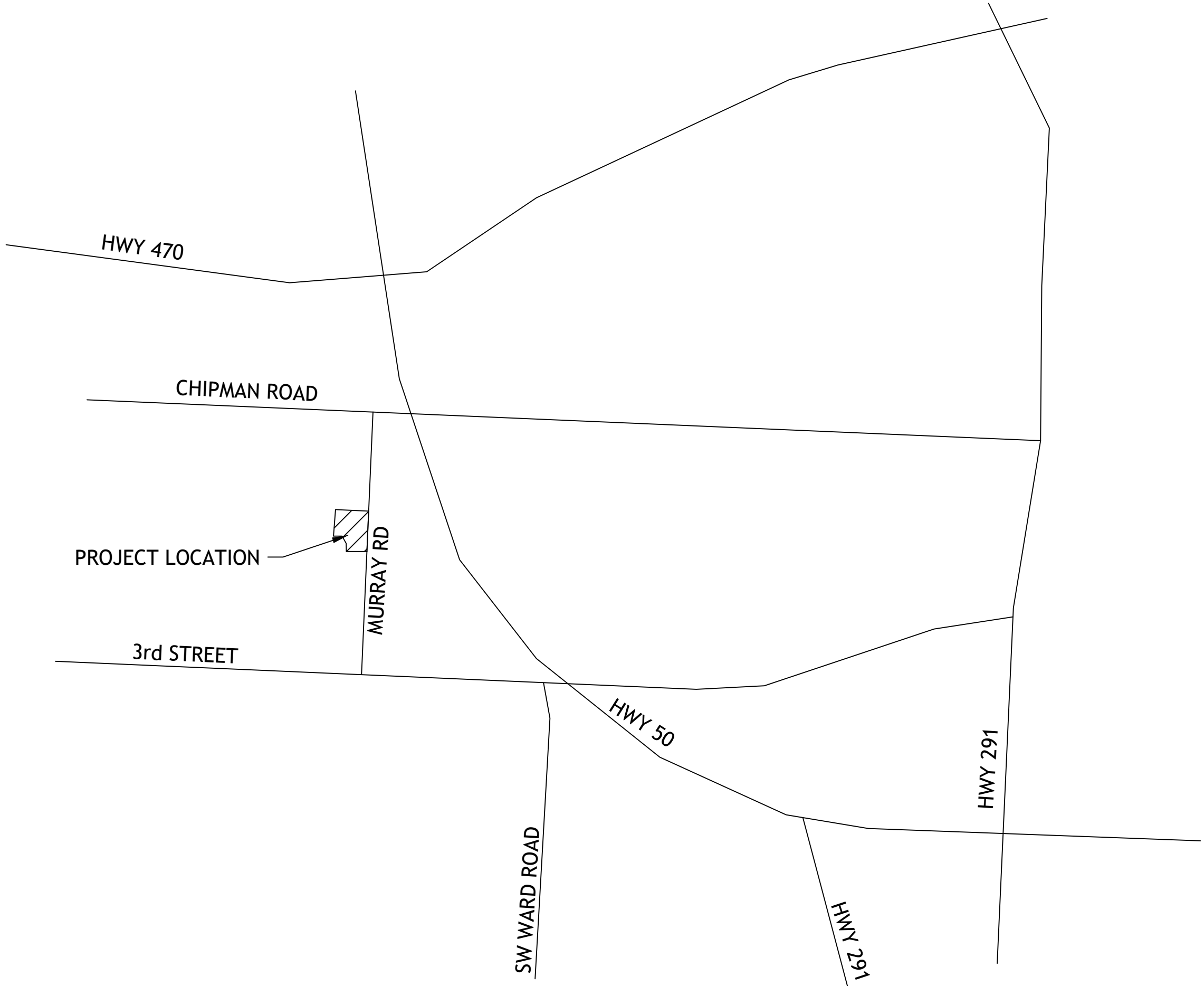


UTILITIES INVOLVED

Kansas City Power & Light	471-0060
Southwestern Bell Telephone	871-9900
KPL Gas Service Company	221-2200
Public Works	969-1800
American Cablevision	231-1444
Water Pollution Control Dept.	513-0303
Missouri One-Call System	1-800-DIG-RITE
City Planning & Development	969-1600
Fire Department	969-1300

UTILITIES:

THE INFORMATION CONCERNING LOCATIONS OF UNDERGROUND UTILITIES SHOWN HEREON WHICH ARE NOT VISIBLE FROM THE SURFACE, HAS BEEN TAKEN FROM THE RECORDS AND FIELD LOCATIONS OF THE VARIOUS UTILITY COMPANIES AND HAS NOT BEEN FIELD VERIFIED BY THIS COMPANY. THESE LOCATIONS ARE NOT TO BE CONSTRUED AS ACCURATE OR EXACT. CONTRACTOR SHALL FIELD VERIFY ALL LOCATIONS AND ELEVATIONS. IF A MAJOR DISCREPANCY IS ENCOUNTERED, NOTIFY ENGINEER.



STANDARD LEGEND

	PROPOSED	EXISTING		PROPOSED	EXISTING
SANITARY SEWER	— S —	— S —	CATCH BASIN OR INLET	□	□
SHRUB	— » —	— * —	ELECTRIC CABLE	— E — E —	— E — E —
SPAN GUY	— » —	— * —	FENCE	— x — x —	— x — x —
STORM SEWER	— ST —	— ST —	FIRE HYDRANT	●	○
STREET LIGHT POLE	●	○	GAS MAIN	— G — G —	— G — G —
STREET SIGN	—	—	GAS OR WATER METER	— W — W —	— G — G —
STUMP	—	—	GAS OR WATER VALVE	— W — W —	— G — G —
TELEPHONE DUCT	— T — T —	— T — T —	GUY ANCHOR	—	—
TELEPHONE OR POWER	— P — P —	— T — T —	MANHOLE	○	○
TELEPHONE POLE	●	○	POWER POLE	■	□
TELEPHONE POLE WITH POWER	— ○ —	— ○ —			
TRAFFIC SIGNAL	●	○			
TREE	●	○			
WATER MAIN	— W —	— W —			

COVER SHEET

NO.

BY

CK/APP

REVISION

DATE

1

SPW

RKS

IF THIS IS NOT A BLUE INK SEAL AND THE SIGNATURE IN BLUE INK, THE PLAN IS A COPY AND MAY CONTAIN UNAUTHORIZED ALTERATIONS. THE CERTIFICATION CONTAINED ON THIS DOCUMENT SHALL NOT APPLY TO ANY COPIES.

consult

Inc

engineers

planners

11010 Haskell Street, Suite 210, Kansas City, Kansas 66109
CORPORATE LICENSE No. E201000573 (MO.) / E-1736 (KS.)

FINAL DEVELOPMENT PLANS

SCHOOL ADDITION AND RENOVATION

OUR LADY OF THE PRESENTATION PARISH

LEE'S SUMMIT- JACKSON COUNTY - MISSOURI

X-REF NO.
19-102 BASE

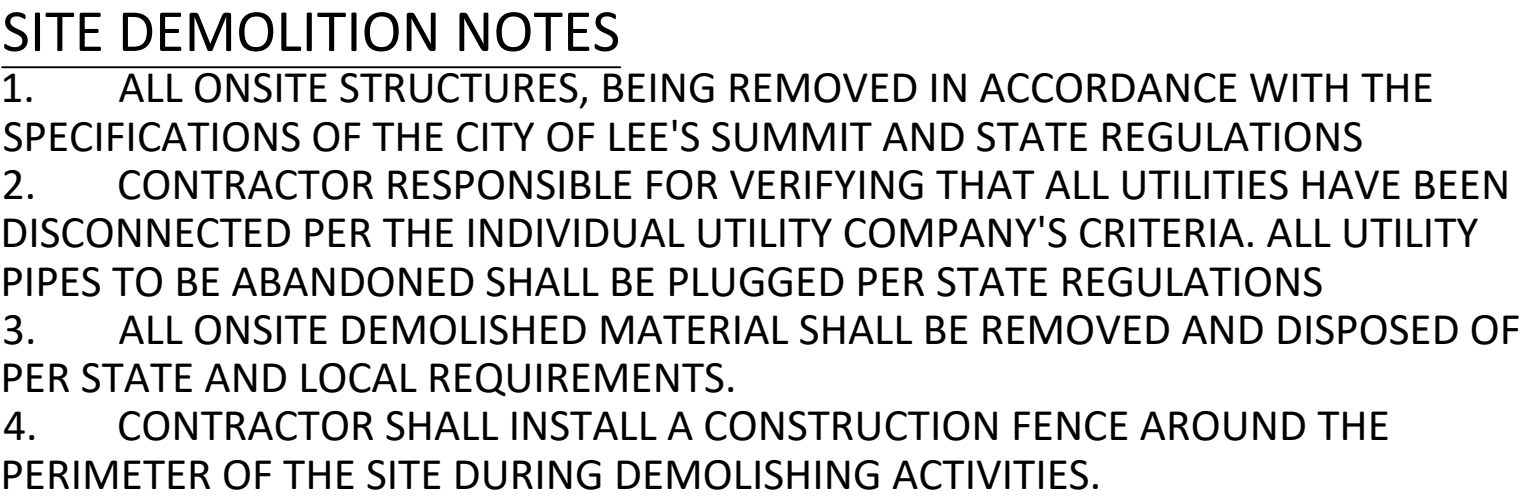
DRAWING NO.
19-102 FINAL PLAN

DATE
MARCH 15, 2019

JOB NO.
19-102

C001

GENERAL NOTES										DATE		REVISION		NO.		BY		CK/APP	
1. Refer to the current version of the City of Lee's Summit Design and Construction (D&C) Manual not the 2004 KCMO APWA, for construction of these plans.																			
2. All workmanship and materials shall be subject to the inspection and approval of the Engineering Department of the City of Lee's Summit, Missouri.																			
3. Lineal foot measurements shown on these plans are horizontal measurements, not slope measurements. All payments shall be made on horizontal measurements.																			
4. No Geological Investigation was performed on this project.																			
5. The Utility locations shown on these plans are taken from Utility Company records and are approximate only. They do not constitute actual field locations. The Contractor shall verify the location and depth of all utilities prior to construction.																			
6. Clearing and Grubbing operations and disposal of all debris therefrom shall be performed by the contractor in strict accordance with all state and local codes and ordinances.																			
7. All waste material shall be disposed of at a location to be selected by the owner or his authorized representative, such location to be on the site.																			
8. The Contractor shall control the erosion and siltation during all phases of construction, he shall keep the streets clean of mud and debris and follow the erosion control plan prepared by the design engineer.																			
9. All existing manholes, catch basins, utility valves and meter pits to be adjusted or rebuilt to grade as required.																			
10. Subgrade soil for all concrete structures, regardless of the type or location, shall be firm, dense and thoroughly compacted and consolidated; shall be free from muck and mud; and shall be sufficiently stable to remain firm and intact under the feet of the workman or machinery engaged in subgrade, laying reinforcing steel, and depositing concrete thereon. In all cases where subsoil is mucky or works into mud or muck during such operation, a seal course of either concrete or rock shall be placed below subgrade to provide a firm base for working and for placing the floor slab.																			
11. A minimum horizontal distance of ten (10') shall be maintained between parallel water and sanitary sewer lines. At any point where sanitary sewer lines cross water main, the sanitary sewer shall be constructed of cast iron pipe or pipe encased in concrete for a distance of ten feet (10') in each direction from the crossing unless the water is a minimum of eighteen inches (18") above the top of the sanitary sewer line.																			
12. Contractor shall provide testing and inspection per SECTION 2200 - PAVING MAINS CITY OF LEE'S SUMMIT, MISSOURI STANDARD SPECIFICATIONS																			
13. Development plans are approved initially for one (1) year, after which they automatically become void and must be updated and approved by the City Engineer before any construction will be permitted.																			
14. The City of Lee's Summit plan review is only for general conformance with the City of Lee's Summit Design Criteria and the City Code. The City is not responsible for the accuracy and adequacy of the design, or dimensions and elevations which shall be confirmed and correlated at the job site. The City of Lee's Summit through approval of this document assumes no responsibility other than as stated above for the completeness and/or accuracy of this document.																			
15. The Contractor shall have one (1) signed copy of the plans (approved by the City of Lee's Summit) and one (1) copy of the appropriate Construction Standards and Specifications at the job site at all times.																			
16. Construction of the improvements shown or implied by this set of drawings shall not be initiated or any part thereof undertaken until the City Engineer is notified of such intent and all required and properly executed bonds and permit fees are received and approved by the City Engineer.																			
17. Contractor shall not be allowed to work on Saturdays, Sundays, or Holidays without prior approval of the City Engineer.																			
18. Relocation of any water line, sewer line or service line thereof required for the construction of this project shall be the responsibility of the contractor and shall be at his expense.																			
19. The Contractor shall install and properly maintain a mechanical plug at all connection points with existing lines until such time that the new line is tested and approved.																			



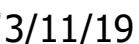
1. CONTRACTOR TO COORDINATE WITH GAS COMPANY AND CITY FOR RELOCATION OF SERVICE.
2. CONTRACTOR TO REMOVE EXISTING WATER SERVICE CONNECTIONS PER CITY REQUIREMENTS.

CONTRACTOR SHALL BE RESPONSIBLE FOR REMOVAL OF THE EXISTING STRUCTURES, RELATED UTILITIES, PAVING, UNDERGROUND STORAGE TANKS AND ANY OTHER EXISTING IMPROVEMENTS AS NOTED. SEE THE OWNER'S/DEVELOPER'S SITE WORK SPECIFICATIONS. CONTRACTOR IS TO REMOVE AND DISPOSE OF ALL DEBRIS, RUBBISH AND OTHER MATERIALS RESULTING FROM PREVIOUS AND CURRENT DEMOLITION OPERATIONS. DISPOSAL WILL BE IN ACCORDANCE WITH ALL LOCAL, STATE AND/OR FEDERAL REGULATIONS GOVERNING SUCH OPERATIONS.

THE GENERAL CONTRACTOR SHALL TAKE ALL PRECAUTIONS NECESSARY TO AVOID PROPERTY DAMAGE TO ADJACENT PROPERTIES DURING THE CONSTRUCTION PHASES OF THIS PROJECT. THE CONTRACTOR WILL BE HELD SOLELY RESPONSIBLE FOR ANY DAMAGES TO THE ADJACENT PROPERTIES OCCURRING DURING THE CONSTRUCTION PHASES OF THIS PROJECT.

THE CONTRACTOR IS SPECIFICALLY CAUTIONED THAT THE LOCATION AND/OR ELEVATION OF EXISTING UTILITIES AS SHOWN ON THESE PLANS IS BASED ON RECORDS OF THE VARIOUS UTILITY COMPANIES, AND WHERE POSSIBLE, MEASUREMENTS TAKEN IN THE FIELD. THE INFORMATION IS NOT TO BE RELIED UPON AS BEING EXACT OR COMPLETE. THE CONTRACTOR MUST CALL THE APPROPRIATE UTILITY COMPANY AT LEAST 48 HOURS BEFORE ANY EXCAVATION TO REQUEST EXACT FIELD LOCATION OF UTILITIES. IT SHALL BE THE RESPONSIBILITY OF THE CONTRACTOR TO RELOCATE ALL EXISTING UTILITIES WHICH CONFLICT WITH THE PROPOSED IMPROVEMENTS SHOWN ON THE PLANS, WHETHER SHOWN OR NOT SHOWN AT NO ADDITIONAL COST TO THE OWNER.

CONTRACTOR SHALL INSPECT AND TEST AS NECESSARY FOR ASBESTOS MATERIALS. REMOVAL OF ASBESTOS MATERIAL WILL MEET ALL LOCAL GOVERNING REQUIREMENTS.

[illegible]

Consult
Engineers
Inc. planners

11010 Haskell Street, Suite 210, Kansas City, Kansas 66109

FINAL DEVELOPMENT PLANS
SCHOOL ADDITION AND RENOVATION
OUR LADY OF THE PRESENTATION PARISH
LEES SUMMIT- JACKSON COUNTY - MISSOURI

<i>X-REF NO.</i>
19-102 BASE
<i>DRAWING NO.</i>
19-102 PRELIMINARY PLAN
<i>DATE</i>
MARCH 15, 2019
<i>JOB NO.</i>
19-102

C003

1. All construction and materials to conform to the city and the specifications and details per the Kansas City Metro Chapter APWA. It is advisable that the contractor become familiar with this document in the event that there is a discrepancy between this and the approved plan and the Manual. Advise the design engineer of any discrepancy prior to bidding or working on this project.
2. Silt fence shall be installed at the perimeter of all disturbed areas within the site during construction for erosion control.
3. Contractor shall contact the Public Works Inspections 48 hours prior to commencement of work at (816) 969-1800.
4. Contractor to locate and relocate any existing utilities that may conflict with construction as necessary.
5. All curb shall be CG-1 or integral with the sidewalk.
6. A handicap parking sign, 5' above finish grade, shall be placed at the head of the designated parking space.
7. There shall be two way traffic movement.
8. Perimeter parking area dimensions shown are at the front of curb.
9. All mechanical equipment shall be screened to 100% opacity and match building material (See Architectural Submittal). (Height of screen shall equal the height of mechanical equipment that is being screened).
10. See architectural submittal for all building dimensions, monument signs and lighting details.
11. This lot is not in a flood plane per FIRM Panel 438 of 625, Map No. 29095C0438G, dated Jan. 20, 2017.
12. ADA accessible ramp to have detectable surface on public handicap ramps only. Detectable surfaces do not need to be installed on the ramps at commercial drives. See KCAPWA web site for details.
13. Building coordinates are pointed to or measured at the outside face of building foundation corners. Contractor shall confirm building dimensions with structural drawings.
14. Other coordinates are pointed to or measured from the front of curb, back of wall or property corner location.
15. Contractor shall coordinate building entrances, egresses, walkways and door locations with architectural and structural drawings.
16. See architectural/structural/mechanical/electrical drawings for miscellaneous site equipment and pads.
17. Curb to be installed at proposed drives by saw cutting a clean straight edge of existing asphalt and forming curb to edge of gutter existing elevation.



	DATE	REVISION	NO.	BY	CK/APP
			1	SPW	RKS

IF THIS IS NOT A BLUE INK SEAL AND THE SIGNATURE IN BLUE INK, THE PLAN IS A COPY AND MAY CONTAIN UNAUTHORIZED ALTERATIONS. THE CERTIFICATION CONTAINED ON THIS DOCUMENT SHALL NOT APPLY TO ANY COPIES.



3/11/19

R. KEVIN STERRETT, MO E-26440

g Consult
engineers
Inc
11010 Haskell Street, Suite 210, Kansas City, Kansas 66109

CORPORATE LICENSE No. E201000573 (MO.) / E-1736 (KS.)

FINAL DEVELOPMENT PLANS

**SCHOOL ADDITION AND RENOVATION
OUR LADY OF THE PRESENTATION PARISH**

LEES SUMMIT- JACKSON COUNTY - MISSOURI

LEES SUMMIT-JACKSON COUNTY - MISSOURI

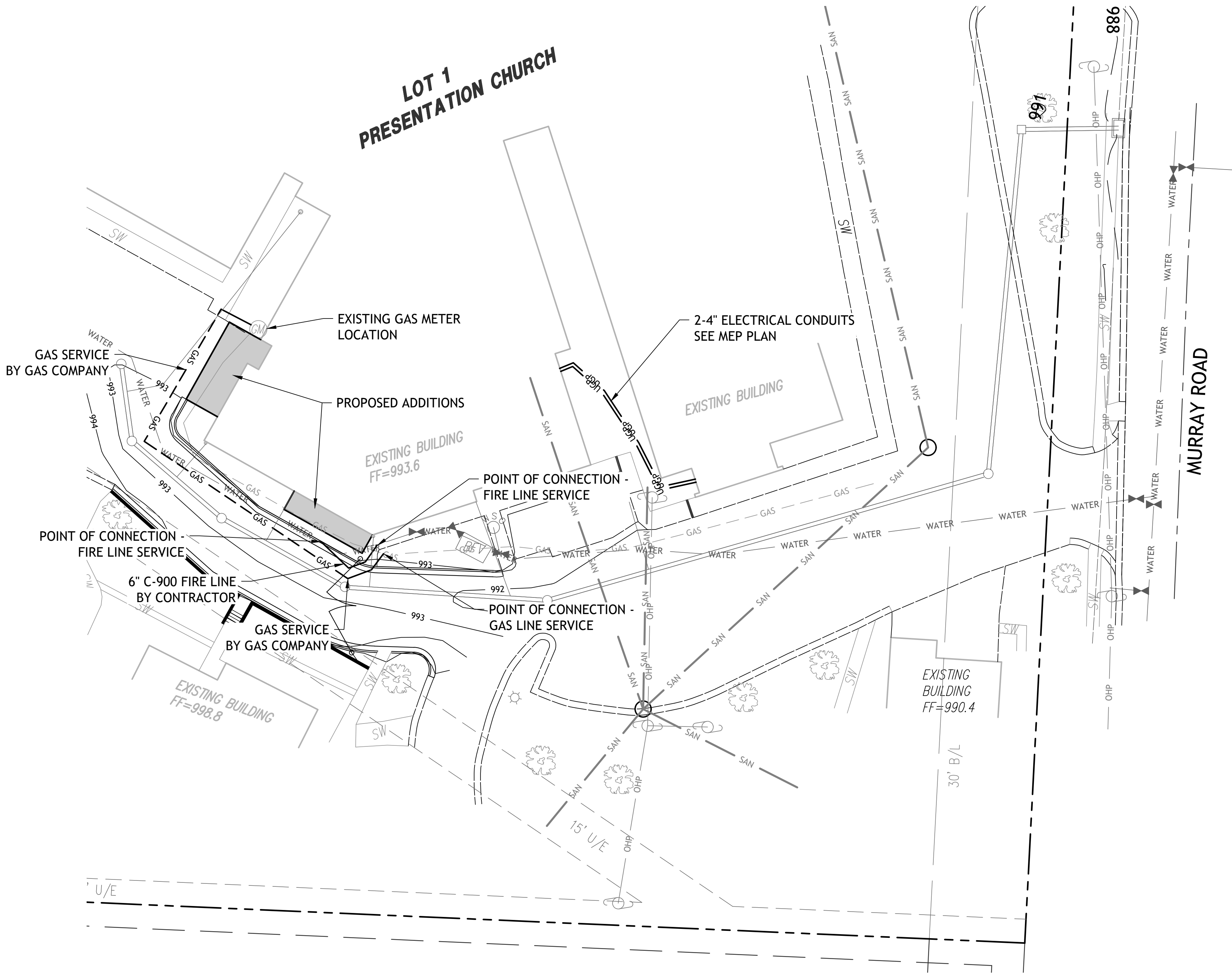
X-REF NO.
19-102 BASE

DRAWING NO.
102 PRELIMINARY PLAN

DATE
MARCH 15, 2019

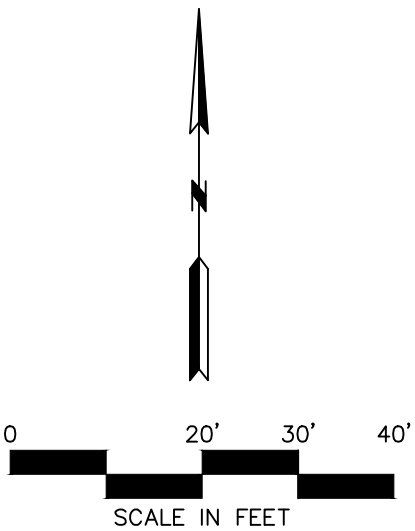
JOB NO.
19-102

C004



- UTILITY NOTES:**
- CONSTRUCTION SHALL NOT START ON ANY PUBLIC WATER OR SANITARY SEWER SYSTEM UNTIL WRITTEN APPROVAL OR PERMITS HAVE BEEN RECEIVED FROM THE ENGINEER.
 - ALL UTILITY AND STORM SEWER TRENCHES CONSTRUCTED UNDER AREAS THAT RECEIVE PAVING SHALL BE BACKFILLED TO 18 INCHES ABOVE THE TOP OF THE PIPE WITH SELECT GRANULAR MATERIAL PLACED ON EIGHT-INCH LIFTS, AND COMPACTED TO 95% MODIFIED PROCTOR DENSITY.
 - CONTRACTOR SHALL NOT OPEN, TURN OFF, INTERFERE WITH, OR ATTACH ANY PIPE OR HOSE TO OR TAP ANY WATER MAIN BELONGING TO THE CITY UNLESS DULY AUTHORIZED TO DO SO BY THE CITY. ANY ADVERSE CONSEQUENCE OF ANY SCHEDULED OR UNSCHEDULED DISRUPTIONS OF SERVICE TO THE PUBLIC ARE TO BE THE LIABILITY OF THE CONTRACTOR. HG ENGINEERING AND OWNER ARE TO BE HELD HARMLESS.
 - DISINFECTION AND PRESSURE TESTING OF WATER LINES SHALL BE PERFORMED AND PAID FOR WATER DEPARTMENT 24 HOURS MINIMUM, PRIOR TO ANY TESTING.
 - ALL WATER AND SANITARY SEWER SYSTEMS THAT ARE TO BE PUBLIC LINES SHALL BE CONSTRUCTED IN ACCORDANCE WITH SPECIFICATIONS PREVIOUSLY APPROVED BY THE CITY OF LEES SUMMIT AND THE STATE OF MISSOURI AND SHALL BE INSPECTED BY THE CITY. IT IS THE CONTRACTOR'S RESPONSIBILITY TO ASSURE THAT THIS INSPECTION OCCURS.
 - LOCATIONS SHOWN FOR PROPOSED WATER AND GAS LINES ARE APPROXIMATE. VARIATIONS MAY BE MADE, WITH APPROVAL OF THE ENGINEER, TO AVOID CONFLICTS.
 - CONTRACTOR TO INSTALL TRACING TAPE ALONG ALL NON-METALLIC WATER MAINS AND SERVICE LINES PER SPECIFICATIONS.
 - CONTRACTOR SHALL EXPOSE EXISTING UTILITIES AT LOCATIONS OF POSSIBLE CONFLICT AND POINTS OF CONNECTION PRIOR TO ANY CONSTRUCTION OF NEW UTILITIES.
 - WATER LINES SHALL HAVE A MINIMUM COVER OF 42 INCHES. ALL VALVES ON MAINS AND FIRE HYDRANT LEADS SHALL BE WITH VALVE BOX ASSEMBLIES. THE SIZE OF VALVE BOX ASSEMBLY TO BE INSTALLED IS DETERMINED BY THE TYPE AND SIZE OF VALVE. VALVE BOX CAPS SHALL HAVE THE WORD "WATER".
 - A MINIMUM HORIZONTAL DISTANCE OF 10 FEET SHALL BE MAINTAINED BETWEEN PARALLEL WATER AND SANITARY SEWER LINES. WHEN IT IS NECESSARY FOR ANY WATER LINE TO CROSS A SANITARY SEWER LINE, THE SEWER LINE SHALL BE CONSTRUCTED OF DUCTILE IRON PIPE AT LEAST 10 FEET EITHER SIDE OF THE WATER LINE UNLESS THE WATER LINE IS AT LEAST 2 FEET CLEAR DISTANCE ABOVE THE SANITARY SEWER LINE.

UTILITY STATEMENT:
THE UNDERGROUND UTILITIES SHOWN HEREON ARE FROM FIELD SURVEY INFORMATION OF ONE-CALL LOCATED UTILITIES, FIELD SURVEY INFORMATION OF ABOVE GROUND OBSERVABLE EVIDENCE, AND/OR THE SCALING AND PLOTTING OF EXISTING UTILITY MAPS AND DRAWINGS AVAILABLE TO THE SURVEYOR AT THE TIME OF SURVEY. THE SURVEYOR MAKES NO GUARANTEE THAT THE UNDERGROUND UTILITIES SHOWN COMPRISE ALL SUCH UTILITIES IN THE AREA, EITHER IN SERVICE OR ABANDONED. FURTHERMORE, THE SURVEYOR DOES NOT WARRANT THAT THE UNDERGROUND UTILITIES SHOWN ARE IN THE EXACT LOCATION INDICATED ALTHOUGH HE DOES CERTIFY THAT THEY ARE LOCATED AS ACCURATELY AS POSSIBLE FROM INFORMATION AVAILABLE. THE SURVEYOR HAS NOT PHYSICALLY LOCATED THE UNDERGROUND UTILITIES BY EXCAVATION UNLESS OTHERWISE NOTED ON THIS SURVEY.



UTILITY PLAN

FINAL DEVELOPMENT PLANS SCHOOL ADDITION AND RENOVATION OUR LADY OF THE PRESENTATION PARISH LEES SUMMIT- JACKSON COUNTY - MISSOURI	X-REF NO. 19-102 BASE	
	DRAWING NO. 19-102 PRELIMINARY PLAN	
	DATE MARCH 15, 2019	
	JOB NO. 19-102	
	C005	

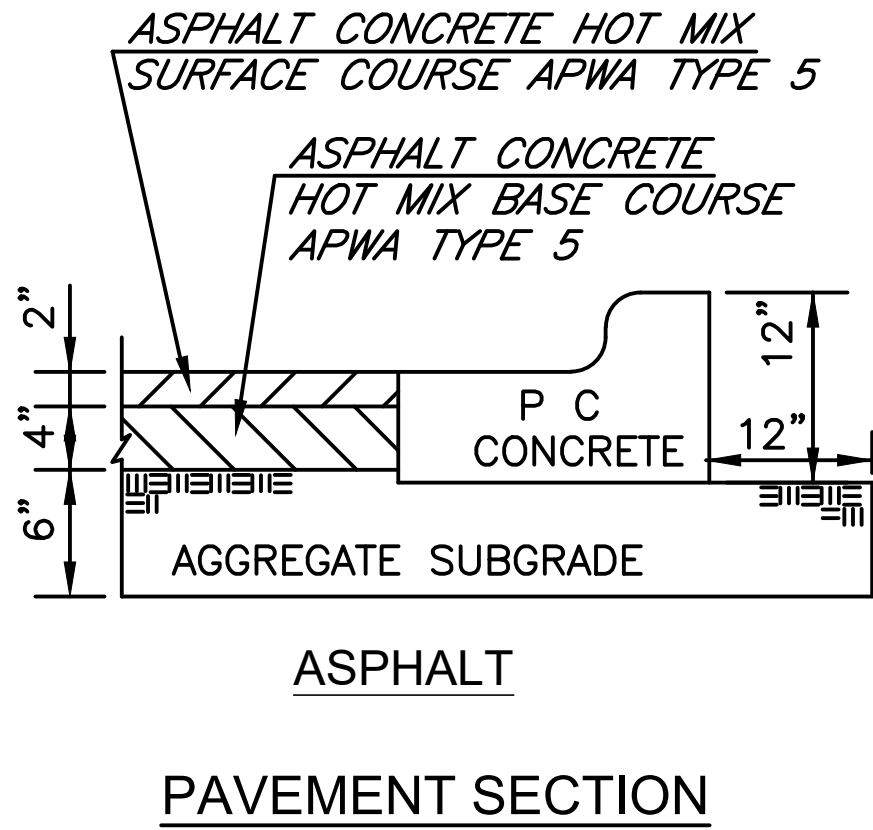
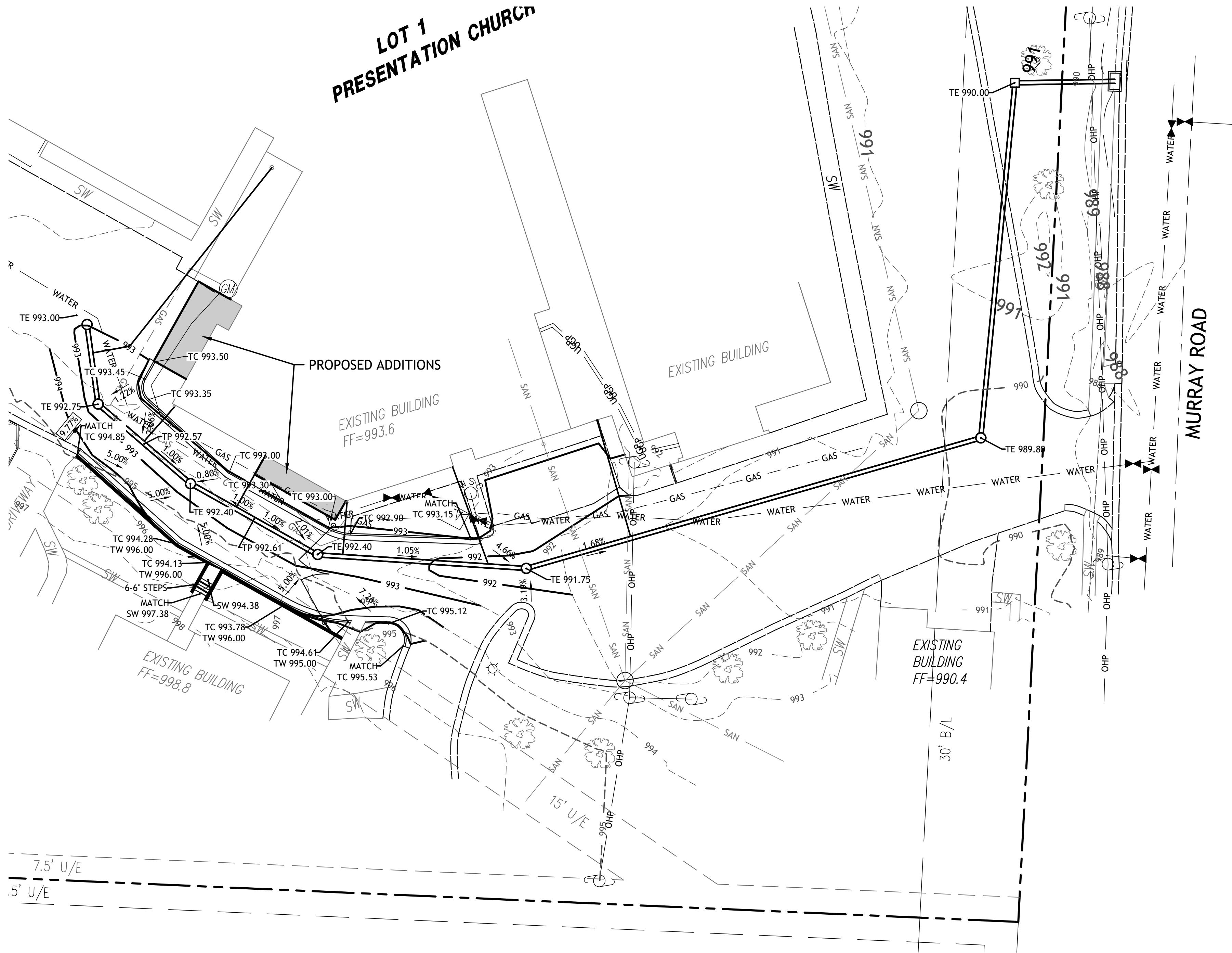
3/11/19

consult inc
engineers planners

11010 Haskell Street, Suite 210, Kansas City, Kansas 66109
CORPORATE LICENSE No. E201000573 (MO.) / E-1736 (KS.)
R. KEVIN STERRETT, MO E-26440

NO.	BY	CK/APP
1	SPW	RKS

IF THIS IS NOT A BLUE INK SEAL, THE SIGNATURE IN BLUE INK, THE PLAN IS A COPY AND MAY CONTAIN UNAUTHORIZED ALTERATIONS. THE CERTIFICATION CONTAINED ON THIS DOCUMENT SHALL NOT APPLY TO ANY COPIES



GENERAL NOTES
INFORMATION PERTAINING TO UNDER GROUND UTILITIES WAS OBTAINED FROM AVAILABLE RECORDS AND FIELD LOCATIONS WHEN POSSIBLE, BUT THE CONTRACTOR MUST DETERMINE THE EXACT LOCATION AND ELEVATION OF ALL EXISTING UTILITIES BY DIGGING TEST PITS BY HAND AT ALL UTILITY CROSSINGS IN ADVANCE OF MACHINE TRENCHING. IF CLEARANCES ARE LESS THAN SPECIFIED ON THESE PLANS OR 24", WHICH EVER IS LESS, CONTACT THE ENGINEER AND THE OWNER/ DEVELOPER PRIOR TO PROCEEDING WITH CONSTRUCTION.

ALL STRUCTURES LOCATED WITHIN RIGHT OF WAY OR OTHERWISE NOTED ON THE THESE PLANS SHALL BE CONSTRUCTED PER HIGHWAY DEPARTMENT STANDARDS. IF STRUCTURE(S) ARE NOT PROTOTYPICAL OR CONSTRUCTION CANNOT BE ACHIEVED CONTRACTOR SHALL SUBMIT SHOP DRAWING TO HG CONSULT, FOR REVIEW AND APPROVAL.

CONTRACTOR SHALL BE RESPONSIBLE FOR RELOCATION OR REMOVAL OF EXISTING UNDERGROUND UTILITIES SHOWN OR NOT SHOWN AT NO ADDITIONAL COST TO THE OWNER.

CONTRACTOR SHALL COORDINATE WITH UTILITY COMPANIES ON ADJUSTING EXISTING UTILITY LINE AS REQUIRED BY CUT AND FILL AT NO ADDITIONAL COST TO THE OWNER.

CONTRACTOR SHALL BE HELD RESPONSIBLE FOR THE DESIGN AND IMPLEMENTATION OF SHEETING, SHORING, BRACING AND SPECIAL EXCAVATION MEASURES REQUIRED TO MEET OSHA, FEDERAL, STATE AND LOCAL REGULATIONS PURSUANT TO THE INSTALLATION OF THE WORK INDICATED ON THESE DRAWINGS. ALL DISTURBED AREAS AND SLOPES SHALL BE GRADED SMOOTH AND (4") OF TOP SOIL APPLIED. THE AREA SHALL BE SEEDED AND WATERED UNTIL HARDY GRASS GROWTH HAS BEEN ESTABLISHED.

STORM DRAIN PIPE BEDDING SHALL BE INSTALLED PER APWA, SECTION 2100. SEE EROSION CONTROL PLAN FOR RIP RAP PAD SIZES.

ELEVATIONS ARE CALLED OUT TO TOP OF CURB, TOP OF PAVEMENT, OR TOP OF STRUCTURE, UNLESS OTHERWISE NOTED.

PARKING LOT GRADING SHALL BE PERFORMED TO ROUTE STORM WATER AS DIRECTED TO THE STORM COLLECTION SYSTEM.

ALL CURB SHALL BE CG-1.

ENSURE THAT FILL MATERIAL IS FREE OF BRUSH, RUBBISH, ROCKS, LOGS, STUMPS, BUILDING DEBRIS, AND OTHER MATERIALS INAPPROPRIATE FOR CONSTRUCTING STABLE FILLS.

DO NOT INCORPORATE FROZEN MATERIAL OR SOFT, MUCK, OR HIGHLY COMPRESSIBLE MATERIALS INTO FILL SLOPES.

PERMANENTLY STABILIZE ALL GRADED AREAS AFTER FINAL GRADING IS COMPLETED ON EACH AREA OF THE GRADING PLAN. APPLY TEMPORARY STABILIZATION MEASURES ON ALL GRADED AREAS WHEN WORK IS TO BE INTERRUPTED OR DELAYED (SEE EROSION CONTROL PLAN(S)).

CONTRACTOR SHALL MATCH TOP OF PROPOSED DRAINAGE STRUCTURES WITH PROPOSED GRADES. IF A DISCREPANCY OCCURS BETWEEN PROPOSED GRADES AND PROPOSED STRUCTURE TOPS, THE GRADING SHALL GOVERN. IF THE DISCREPANCY IS MORE THAN 4 INCHES THE CONTRACTOR SHALL CONTACT THE ENGINEER OF RECORD.

ALL UTILITIES, INCLUDING STORM SEWER, SHOWN WITHIN PUBLIC EASEMENTS OR RIGHT OF WAYS SHALL BE CONSTRUCTED TO THE GOVERNING AGENCY'S SPECIFICATIONS. ALL OTHER UTILITIES SHALL BE CONSTRUCTED TO THE CLIENT'S OR THE GOVERNING AGENCY'S SPECIFICATIONS, WHICHEVER IS MORE STRINGENT, IF THERE IS A QUESTION AS TO WHICH SPECIFICATIONS SHOULD APPLY THE CONTRACTOR SHALL CONTACT THE ENGINEER OF RECORD.

ALL EXISTING STRUCTURES, UNLESS OTHERWISE NOTED TO REMAIN. ALL FENCING, TREES, & ETC., WITHIN CONSTRUCTION AREA SHALL BE REMOVED & DISPOSED OF OFF SITE. UNLESS OTHERWISE NOTED. ANY BURNING ON SITE SHALL BE SUBJECT TO LOCAL ORDINANCES AND/OR THE OWNER/DEVELOPERS STANDARDS AND SPECIFICATIONS.

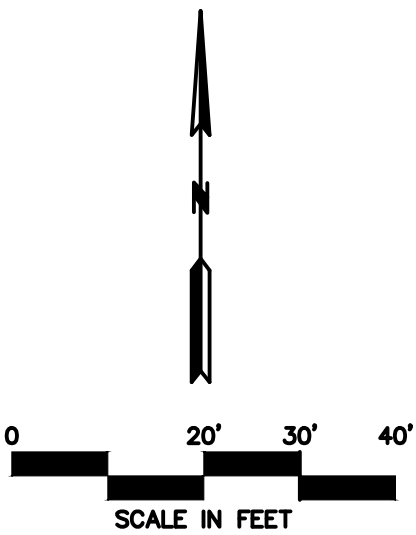
ALL DRAINAGE STRUCTURES AND STORM SEWER PIPES SHALL MEET HEAVY DUTY TRAFFIC (H20) LOADING AND BE INSTALLED ACCORDINGLY.

CONTRACTOR SHALL NOTIFY ALL UTILITY COMPANIES HAVING UNDERGROUND UTILITIES ON SITE OR IN RIGHT-OF-WAY PRIOR TO EXCAVATION. CONTRACTOR SHALL CONTACT UTILITY LOCATING COMPANY (STATE ONE CALL SYSTEM) AND LOCATE ALL UTILITIES PRIOR TO GRADING START.

SITE GRADING SHALL NOT PROCEED UNTIL EROSION CONTROL MEASURES HAVE BEEN INSTALLED.

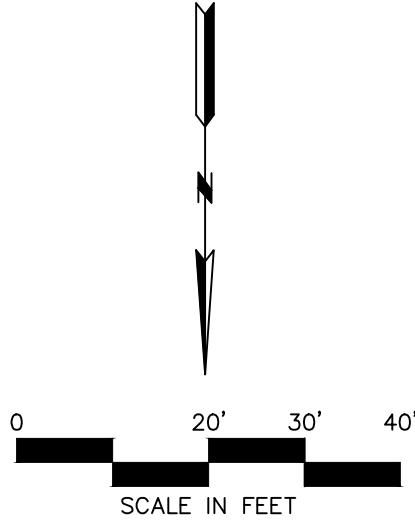
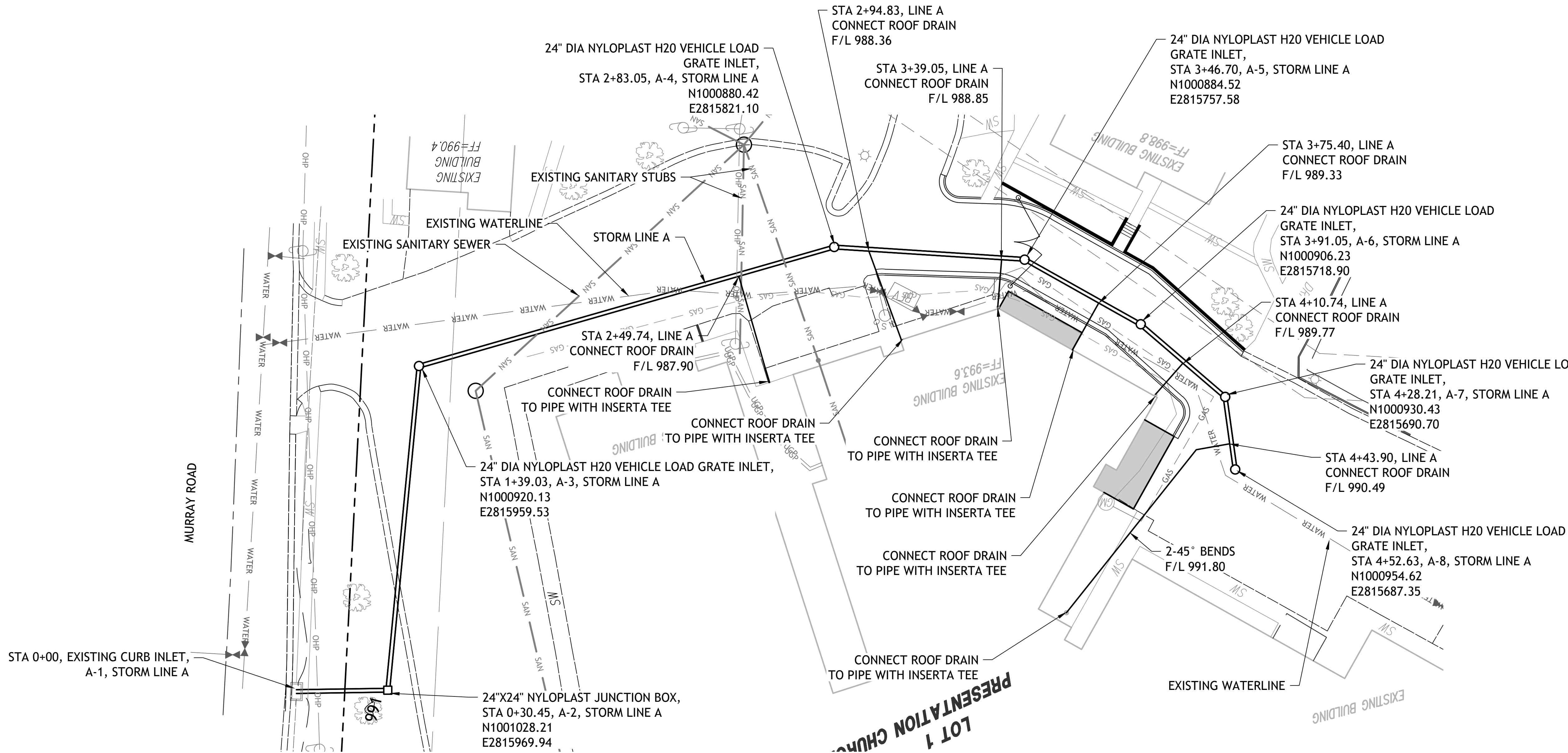
AFTER PERMITS HAVE BEEN OBTAINED AND EROSION CONTROL MEASURES INSTALLED, THE CONTRACTOR SHALL GRADE BUILDING PAD & APRONS TO 0" TO - 1/2" OF SUBGRADE.

- GRADING NOTES:
- EARTHWORK UNDER THE BUILDING SHALL COMPLY WITH THE PROJECT ARCHITECTURAL PLANS. OTHER FILL MATERIAL SHALL BE MADE IN LIFTS NOT TO EXCEED EIGHT INCHES DEPTH COMPACTED TO 95% STANDARD PROCTOR DENSITY. FILL MATERIAL MAY INCLUDE ROCK FROM ON-SITE EXCAVATION IF CAREFULLY PLACED SO THAT LARGE STONES ARE WELL DISTRIBUTED AND VOIDS ARE COMPLETELY FILLED WITH SMALLER STONES, EARTH, SAND OR GRAVEL TO FURNISH A SOLID EMBANKMENT. NO ROCK LARGER THAN THREE INCHES IN ANY DIMENSION NOR ANY SHALE SHALL BE PLACED IN THE TOP 12 INCHES OF EMBANKMENT.
 - AREAS THAT ARE TO BE CUT TO SUBGRADE LEVELS SHALL BE PROOF ROLLED WITH A MODERATELY HEAVY LOADED DUMP TRUCK OR SIMILAR APPROVED CONSTRUCTION EQUIPMENT TO DETECT UNSUITABLE SOIL CONDITIONS.
 - IN ALL AREAS OF EXCAVATION, IF UNSUITABLE SOIL CONDITIONS ARE ENCOUNTERED. A QUALIFIED GEOTECHNICAL ENGINEER SHALL RECOMMEND TO THE OWNER THE METHODS OF UNDERCUTTING AND REPLACEMENT OF PROPERLY COMPACTED, APPROVED FILL MATERIAL. ALL PROOF ROLLING AND UNDERCUTTING SHOULD BE PERFORMED DURING A PERIOD OF DRY WEATHER.
 - CONTRACTOR SHALL USE SILT FENCE OR OTHER MEANS OF CONTROLLING EROSION ALONG THE EDGE OF THE PROPERTY OR OTHER BOTTOM OF SLOPE LOCATIONS.
 - CONTRACTOR IS TO REMOVE AND DISPOSE OF ALL DEBRIS, RUBBISH AND OTHER MATERIALS RESULTING FROM PREVIOUS AND CURRENT DEMOLITION OPERATIONS.
 - THE CONTRACTOR SHALL TAKE ALL PRECAUTIONS NECESSARY TO AVOID PROPERTY DAMAGE TO ADJACENT PROPERTIES DURING THE CONSTRUCTION PHASES OF THIS PROJECT. THE CONTRACTOR WILL BE HELD SOLELY RESPONSIBLE FOR ANY DAMAGES TO THE ADJACENT PROPERTIES OCCURRING DURING THE CONSTRUCTION PHASES OF THIS PROJECT.
 - IT IS NOT THE DUTY OF THE ENGINEER OR THE OWNER TO REVIEW THE ADEQUACY OF THE CONTRACTOR'S SAFETY MEASURES, IN, ON OR NEAR THE CONSTRUCTION SITE AT ANY TIME DURING CONSTRUCTION.
 - THE SITEWORK FOR THIS PROJECT SHALL MEET OR EXCEED STANDARD SITEWORK SPECIFICATIONS.
 - PIPE LENGTHS ARE CENTER TO CENTER OF STRUCTURE OR TO END OF END SECTIONS.
 - HANDICAP STALLS SHALL MEET ADA REQUIREMENTS AND SHALL NOT EXCEED 2% SLOPE IN ANY DIRECTION AT THE BUILDING ENTRY AND ACCESSIBLE PARKING STALLS. SLOPES EXCEEDING 2.0% WILL BE REPLACED AT THE CONTRACTOR'S EXPENSE.
 - CONTRACTOR TO ADJUST DEPTHS OF EXISTING SERVICE LINES AS NECESSARY

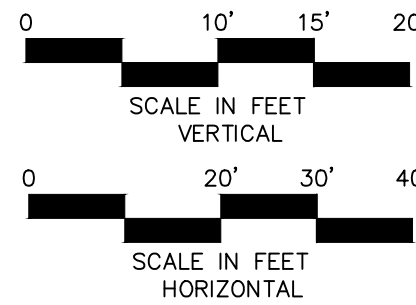
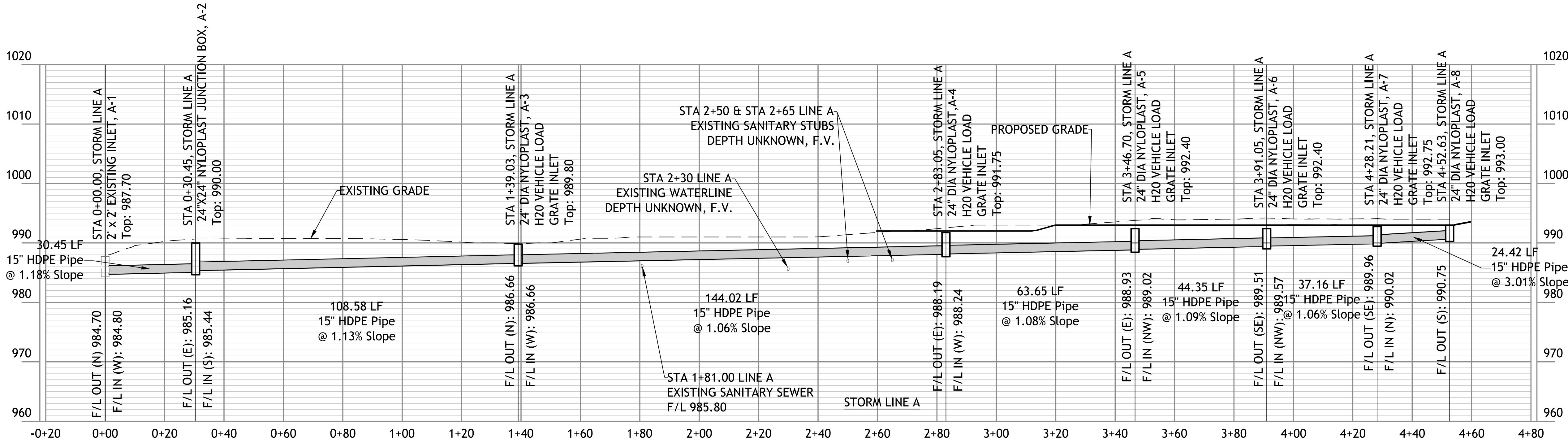


GRADING PLAN

CK/APP	NO.	BY	REVISION	DATE	1	SPW	RKS
					F THIS IS NOT A BLUE INK SEAL AND THE SIGNATURE IN BLUE INK, THE PLAN IS A COPY AND MAY CONTAIN UNAUTHORIZED ALTERATIONS. THE CERTIFICATION CONTAINED ON THIS DOCUMENT SHALL NOT APPLY TO ANY COPIES		
					R. KEVIN STERRETT, MO E-26440		
					3/11/19		
					consult inc engineers planners		
					11010 Haskell Street, Suite 210, Kansas City, Kansas 66109 CORPORATE LICENSE No. E201000573 (MO.) / E-1736 (KS.)		
FINAL DEVELOPMENT PLANS					LEES SUMMIT- JACKSON COUNTY - MISSOURI		
SCHOOL ADDITION AND RENOVATION							
OUR LADY OF THE PRESENTATION PARISH							
X-REF NO.					19-102 BASE		
DRAWING NO.					19-102 PRELIMINARY PLAN		
DATE					MARCH 15, 2019		
JOB NO.					19-102		
C006							



F.V. FIELD VERIFY



STORM LINE A PLAN AND PROFILE

NO.	BY	CK/APP
1	SPW	RKS

IF THIS IS NOT A BLUE INK SEAL AND THE SIGNATURE IN BLUE INK, THE PLAN IS A COPY AND MAY CONTAIN UNAUTHORIZED ALTERATIONS. THE CERTIFICATION CONTAINED ON THIS DOCUMENT SHALL NOT APPLY TO ANY COPIES

3/11/19

Consult Inc
engineers planners

11010 Haskell Street, Suite 210, Kansas City, Kansas 66109
CORPORATE LICENSE No. E201000573 (MO.) / E-1736 (KS.)

R. KEVIN STERRETT, MO E-26440

FINAL DEVELOPMENT PLANS

SCHOOL ADDITION AND RENOVATION OUR LADY OF THE PRESENTATION PARISH

LEES SUMMIT- JACKSON COUNTY - MISSOURI

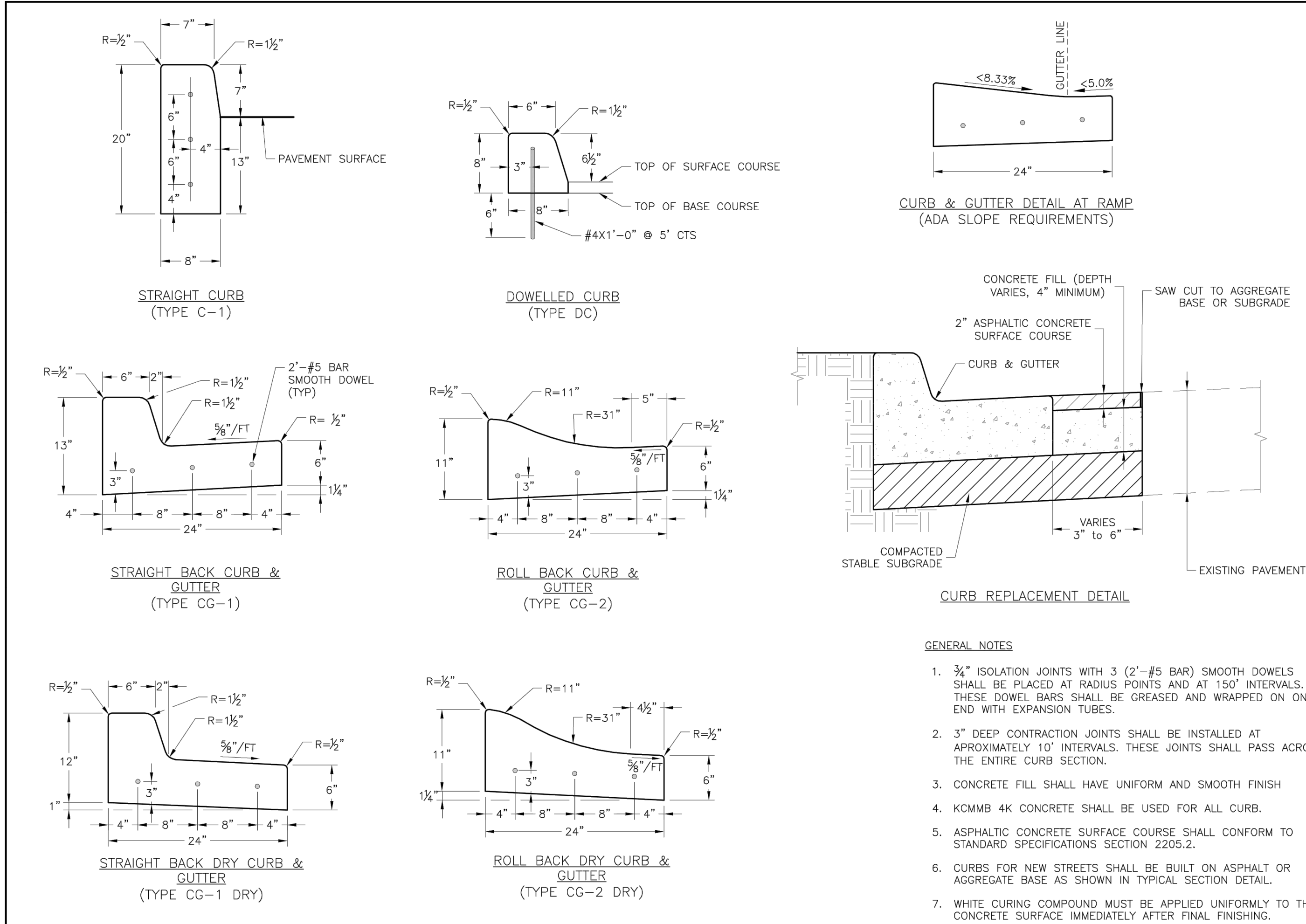
X-REF NO.
19-102 BASE

DRAWING NO.
19-102 PRELIMINARY PLAN

DATE
MARCH 15, 2019

JOB NO.
19-102

C007



- GENERAL NOTES**
- 3/4" ISOLATION JOINTS WITH 3 (2'-#5 BAR) SMOOTH DOWELS SHALL BE PLACED AT RADIUS POINTS AND AT 150' INTERVALS. THESE DOWEL BARS SHALL BE GREASED AND WRAPPED ON ONE END WITH EXPANSION TUBES.
 - 3" DEEP CONTRACTION JOINTS SHALL BE INSTALLED AT APPROXIMATELY 10' INTERVALS. THESE JOINTS SHALL PASS ACROSS THE ENTIRE CURB SECTION.
 - CONCRETE FILL SHALL HAVE UNIFORM AND SMOOTH FINISH.
 - KCMMB 4K CONCRETE SHALL BE USED FOR ALL CURB.
 - ASPHALTIC CONCRETE SURFACE COURSE SHALL CONFORM TO STANDARD SPECIFICATIONS SECTION 2205.2.
 - CURBS FOR NEW STREETS SHALL BE BUILT ON ASPHALT OR AGGREGATE BASE AS SHOWN IN TYPICAL SECTION DETAIL.
 - WHITE CURING COMPOUND MUST BE APPLIED UNIFORMLY TO THE CONCRETE SURFACE IMMEDIATELY AFTER FINAL FINISHING.

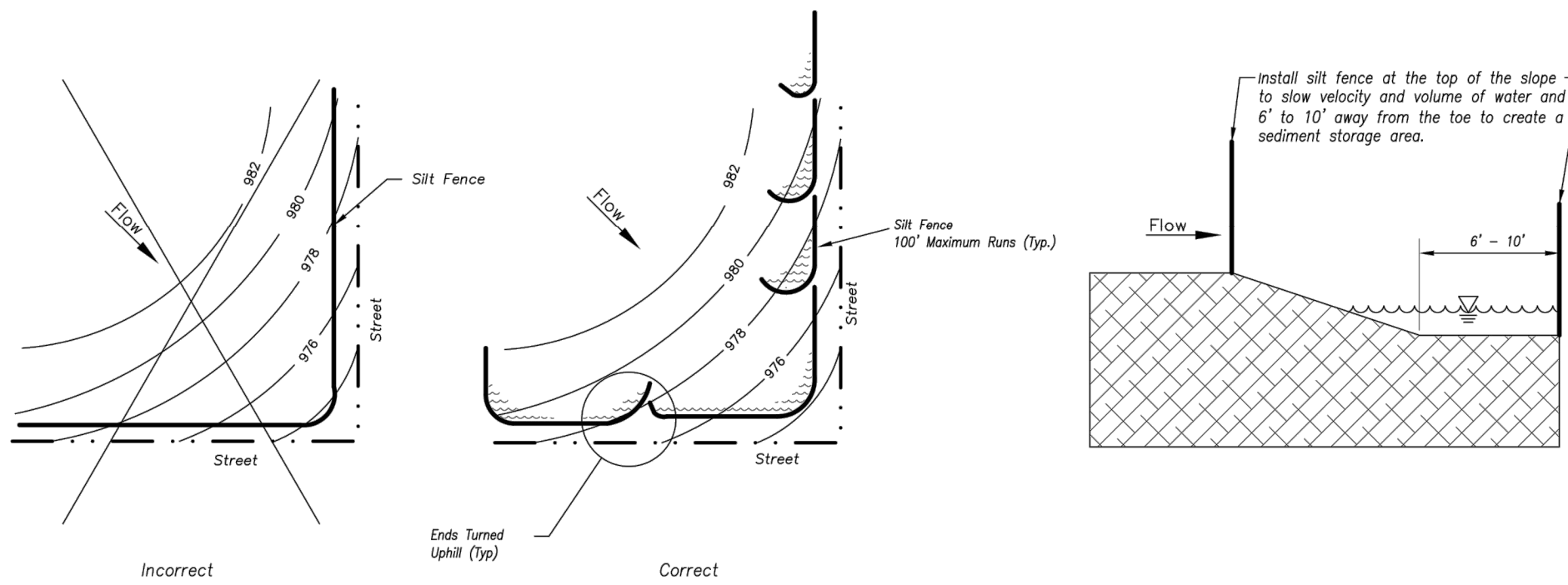
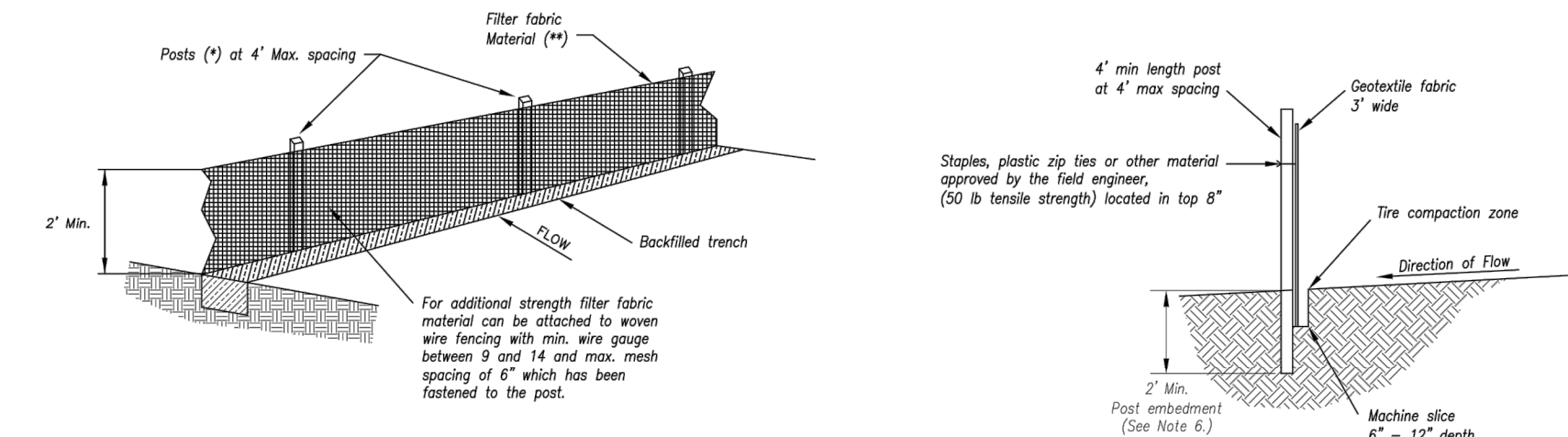
GEN-4

LEE'S SUMMIT MISSOURI

PUBLIC WORKS ENGINEERING DIVISION 1205 SE GREEN STREET | LEE'S SUMMIT, MO 64083

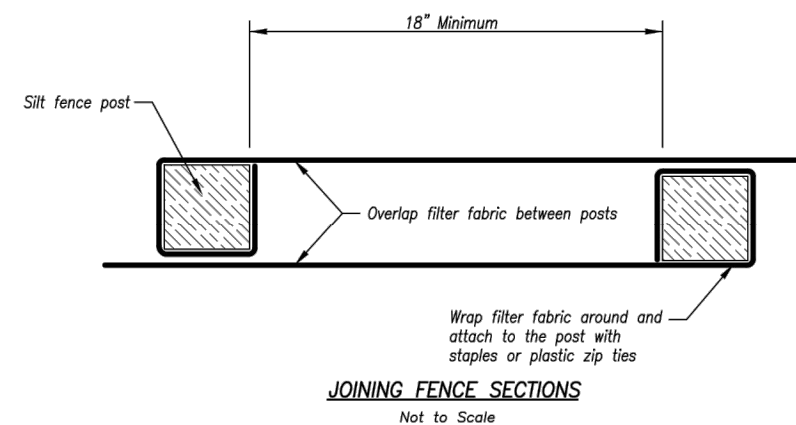
STANDARD DETAILS
CITY OF LEE'S SUMMIT, MO
LEE'S SUMMIT, JACKSON COUNTY, MO

Drawn By: MEF
Checked By: DL
Date: 04/17
Proj #: 4



- Notes:**
- In order to contain water, the ends of the silt fence must be turned uphill (Figure A).
 - Long perimeter runs of silt fence must be limited to 100'. Runs should be broken up into several smaller segments to minimize water concentrations (Figure A).
 - Long slopes should be broken up with intermediate rows of silt fence to slow runoff velocities.
 - Attach fabric to upstream side of post.
 - Install posts a minimum of 2' into the ground.
 - Trenching will only be allowed for small or difficult installation, where slicing machine cannot be reasonably used.

- Maintenance:**
- Remove and dispose of sediment deposits when the deposit approaches 1/2 the height of silt fence.
 - Repair as necessary to maintain function and structure.



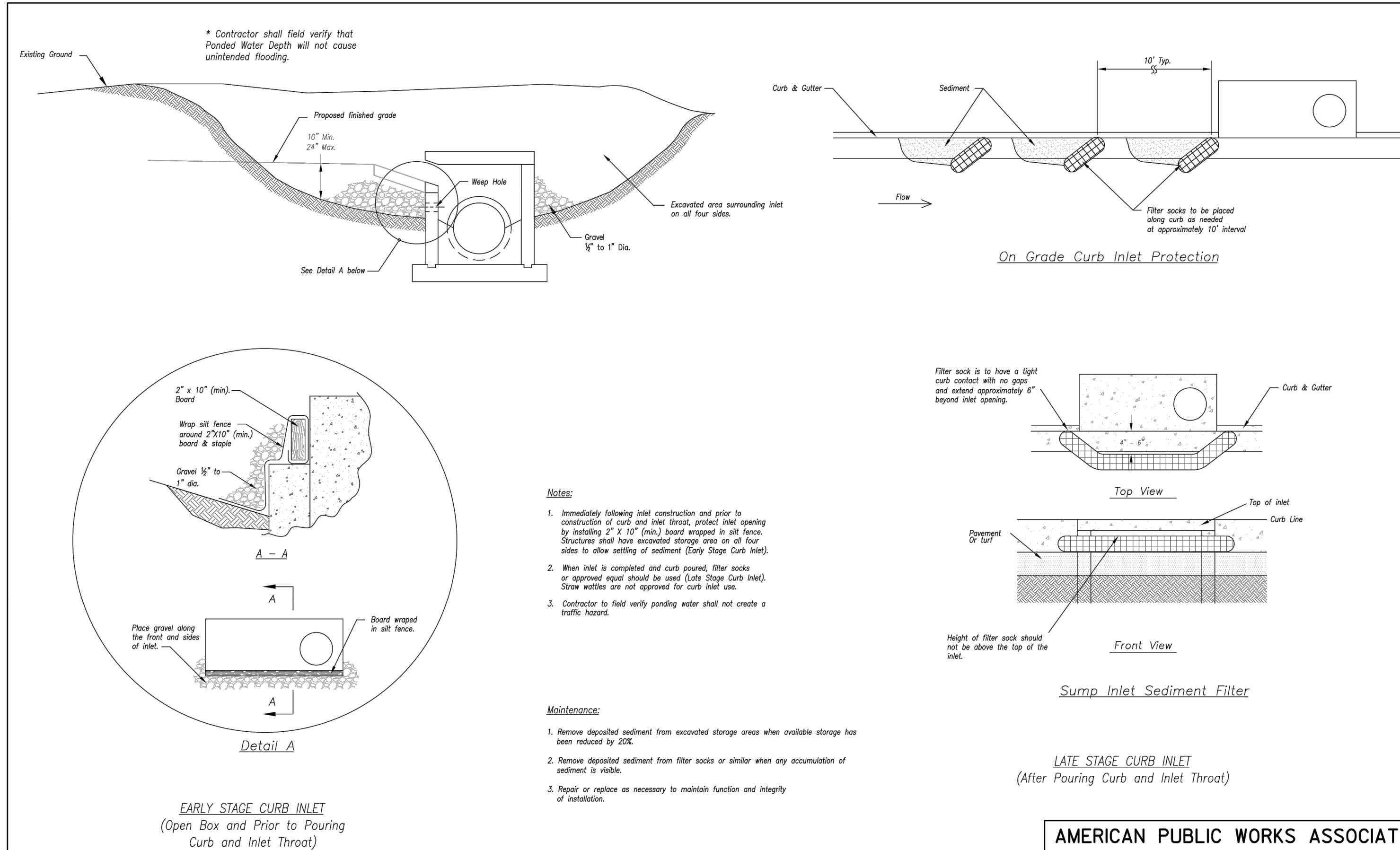
AMERICAN PUBLIC WORKS ASSOCIATION

KANSAS CITY METRO CHAPTER

STANDARD DRAWING NUMBER ESC-03

ADOPTED: 10/24/2016

Modified from 2015 Overland Park Standard Details for Erosion and Sediment Control.



- Notes:**
- Immediately following inlet construction and prior to construction of curb and inlet throat, protect inlet opening by installing 2" x 10" (min.) board wrapped in silt fence. Structures shall have excavated storage area on all four sides to allow settling of sediment (Early Stage Curb Inlet).
 - When inlet is completed and curb poured, filter socks or approved equal should be used (Late Stage Curb Inlet). Stone weirs are not approved for curb inlet use.
 - Contractor to field verify ponding water shall not create a traffic hazard.

- Maintenance:**
- Remove deposited sediment from excavated storage areas when available storage has been reduced by 20%.
 - Remove deposited sediment from filter socks or similar when any accumulation of sediment is visible.
 - Repair or replace as necessary to maintain function and integrity of installation.

LATE STAGE CURB INLET (After Pouring Curb and Inlet Throat)

AMERICAN PUBLIC WORKS ASSOCIATION

KANSAS CITY METRO CHAPTER

STANDARD DRAWING NUMBER ESC-06

ADOPTED: 10/24/2016

Modified from 2015 Overland Park Standard Details for Erosion and Sediment Control.

FINAL DEVELOPMENT PLANS

**SCHOOL ADDITION AND RENOVATION
OUR LADY OF THE PRESENTATION PARISH**

LEE'S SUMMIT - JACKSON COUNTY - MISSOURI



3/11/19

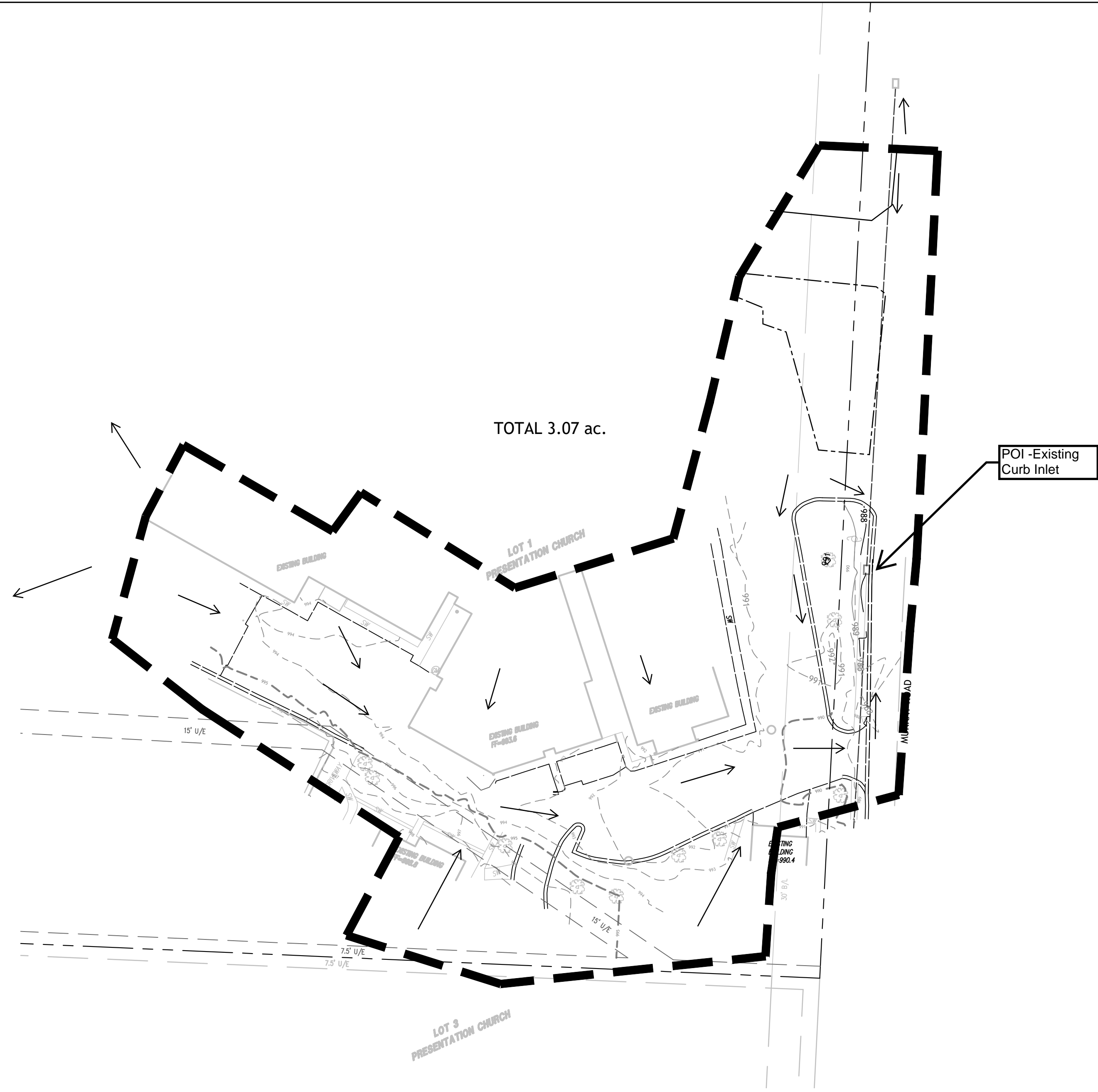
consult inc engineers planners

11010 Haskell Street, Suite 210, Kansas City, Kansas 66109
CORPORATE LICENSE No. E201000573 (MO.) / E-1736 (KS.)

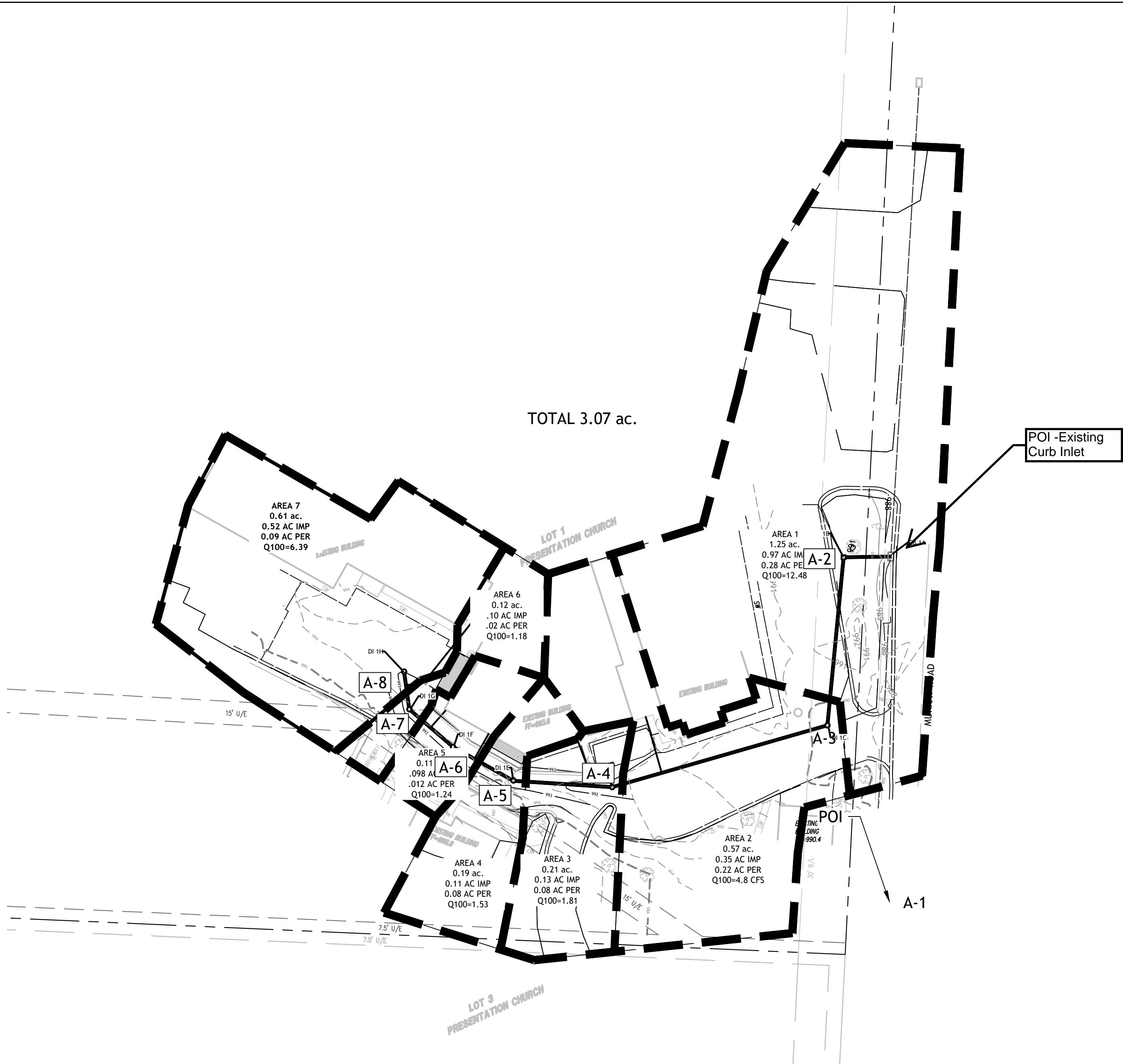
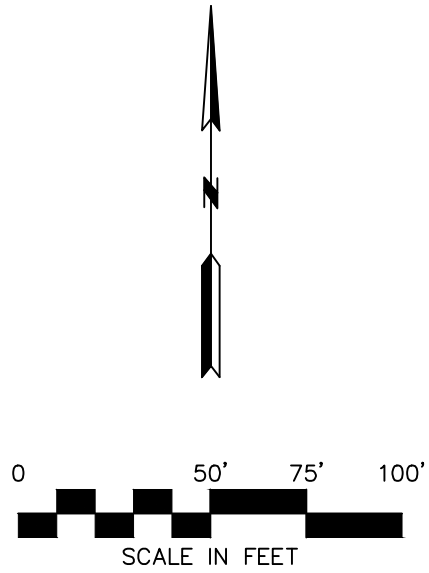
NO.	BY	CK/APP
1	SPW	RKS

IF THIS IS NOT A BLUE INK SEAL AND THE SIGNATURE IN BLUE INK, THE PLAN IS A COPY AND MAY CONTAIN UNAUTHORIZED ALTERATIONS. THE CERTIFICATION CONTAINED ON THIS DOCUMENT SHALL NOT APPLY TO ANY COPIES

C008



PRE-DEVELOPMENT



POST-DEVELOPMENT

DRAINAGE AREA MAP

Note: Currently storm drainage as shown surface drains to Murray Road, down curb line to the existing curb Inlet (Point of Interest (POI)). The underground storm system shown, if chosen as alternate, will route surface drainage and roof drainage piped to it, to the same curb inlet, with no increase in flow through said curb inlet.

STORM SEWER CALCULATIONS

PRESENTATION CHURCH																																																																																																																																																																																																																																																																																																																																																																																																																																																																																																																																																																																																																																																																																																																																																																																																																																																																																																																																																																																																																																																																																																																																																																																																																																																																																																																																																																																																																																																																																																														
---------------------	--	--	--	--	--	--	--	--	--	--	--	--	--	--	--	--	--	--	--	--	--	--	--	--	--	--	--	--	--	--	--	--	--	--	--	--	--	--	--	--	--	--	--	--	--	--	--	--	--	--	--	--	--	--	--	--	--	--	--	--	--	--	--	--	--	--	--	--	--	--	--	--	--	--	--	--	--	--	--	--	--	--	--	--	--	--	--	--	--	--	--	--	--	--	--	--	--	--	--	--	--	--	--	--	--	--	--	--	--	--	--	--	--	--	--	--	--	--	--	--	--	--	--	--	--	--	--	--	--	--	--	--	--	--	--	--	--	--	--	--	--	--	--	--	--	--	--	--	--	--	--	--	--	--	--	--	--	--	--	--	--	--	--	--	--	--	--	--	--	--	--	--	--	--	--	--	--	--	--	--	--	--	--	--	--	--	--	--	--	--	--	--	--	--	--	--	--	--	--	--	--	--	--	--	--	--	--	--	--	--	--	--	--	--	--	--	--	--	--	--	--	--	--	--	--	--	--	--	--	--	--	--	--	--	--	--	--	--	--	--	--	--	--	--	--	--	--	--	--	--	--	--	--	--	--	--	--	--	--	--	--	--	--	--	--	--	--	--	--	--	--	--	--	--	--	--	--	--	--	--	--	--	--	--	--	--	--	--	--	--	--	--	--	--	--	--	--	--	--	--	--	--	--	--	--	--	--	--	--	--	--	--	--	--	--	--	--	--	--	--	--	--	--	--	--	--	--	--	--	--	--	--	--	--	--	--	--	--	--	--	--	--	--	--	--	--	--	--	--	--	--	--	--	--	--	--	--	--	--	--	--	--	--	--	--	--	--	--	--	--	--	--	--	--	--	--	--	--	--	--	--	--	--	--	--	--	--	--	--	--	--	--	--	--	--	--	--	--	--	--	--	--	--	--	--	--	--	--	--	--	--	--	--	--	--	--	--	--	--	--	--	--	--	--	--	--	--	--	--	--	--	--	--	--	--	--	--	--	--	--	--	--	--	--	--	--	--	--	--	--	--	--	--	--	--	--	--	--	--	--	--	--	--	--	--	--	--	--	--	--	--	--	--	--	--	--	--	--	--	--	--	--	--	--	--	--	--	--	--	--	--	--	--	--	--	--	--	--	--	--	--	--	--	--	--	--	--	--	--	--	--	--	--	--	--	--	--	--	--	--	--	--	--	--	--	--	--	--	--	--	--	--	--	--	--	--	--	--	--	--	--	--	--	--	--	--	--	--	--	--	--	--	--	--	--	--	--	--	--	--	--	--	--	--	--	--	--	--	--	--	--	--	--	--	--	--	--	--	--	--	--	--	--	--	--	--	--	--	--	--	--	--	--	--	--	--	--	--	--	--	--	--	--	--	--	--	--	--	--	--	--	--	--	--	--	--	--	--	--	--	--	--	--	--	--	--	--	--	--	--	--	--	--	--	--	--	--	--	--	--	--	--	--	--	--	--	--	--	--	--	--	--	--	--	--	--	--	--	--	--	--	--	--	--	--	--	--	--	--	--	--	--	--	--	--	--	--	--	--	--	--	--	--	--	--	--	--	--	--	--	--	--	--	--	--	--	--	--	--	--	--	--	--	--	--	--	--	--	--	--	--	--	--	--	--	--	--	--	--	--	--	--	--	--	--	--	--	--	--	--	--	--	--	--	--	--	--	--	--	--	--	--	--	--	--	--	--	--	--	--	--	--	--	--	--	--	--	--	--	--	--	--	--	--	--	--	--	--	--	--	--	--	--	--	--	--	--	--	--	--	--	--	--	--	--	--	--	--	--	--	--	--	--	--	--	--	--	--	--	--	--	--	--	--	--	--	--	--	--	--	--	--	--	--	--	--	--	--	--	--	--	--	--	--	--	--	--	--	--	--	--	--	--	--	--	--	--	--	--	--	--	--	--	--	--	--	--	--	--	--	--	--	--	--	--	--	--	--	--	--	--	--	--	--	--	--	--	--	--	--	--	--	--	--	--	--	--	--	--	--	--	--	--	--	--	--	--	--	--	--	--	--	--	--	--	--	--	--	--	--	--	--	--	--	--	--	--	--	--	--	--	--	--	--	--	--	--	--	--	--	--	--	--	--	--	--	--	--	--	--	--	--	--	--	--	--	--	--	--	--	--	--	--	--	--	--	--	--	--	--	--	--	--	--	--	--	--	--	--	--	--	--	--	--	--	--	--	--	--	--	--	--	--	--	--	--	--	--	--	--	--	--	--	--	--	--	--	--	--	--	--	--	--	--	--	--	--	--	--	--	--	--	--	--	--	--	--	--	--	--	--	--	--	--	--	--	--	--	--	--	--	--	--	--	--	--	--	--	--	--	--	--	--	--	--	--	--	--	--	--	--	--	--	--	--	--	--	--	--	--	--	--	--	--	--	--	--	--	--	--	--	--	--	--	--	--	--	--	--	--	--	--	--	--	--	--	--	--	--	--	--	--	--	--	--	--	--	--	--	--	--	--	--	--	--	--	--	--	--	--	--	--	--	--	--	--	--	--	--	--	--	--	--	--	--	--	--	--	--	--	--	--	--	--	--	--	--	--	--	--	--	--	--	--	--	--	--	--	--	--	--	--	--	--	--	--	--	--	--	--	--	--	--	--	--	--	--	--	--	--	--	--	--	--	--	--	--	--	--	--	--	--	--	--	--	--	--	--	--	--	--	--	--	--	--	--	--	--	--	--	--	--	--	--	--	--	--	--	--	--	--	--	--	--	--	--	--	--	--	--	--	--	--	--	--	--	--	--	--	--	--	--	--	--	--	--	--	--	--	--	--	--	--	--	--	--	--	--	--	--	--	--	--	--	--	--	--	--	--	--	--	--	--	--	--	--	--	--	--	--	--	--	--	--	--	--	--	--	--	--	--	--	--	--	--	--	--	--	--	--	--	--	--	--	--	--	--	--	--	--	--	--	--	--	--	--	--	--	--	--	--	--	--	--	--	--	--	--	--	--	--	--	--	--	--	--	--	--	--	--	--	--	--	--	--	--	--	--	--	--	--	--	--	--	--	--	--	--	--	--	--	--	--	--	--	--	--	--	--	--	--	--	--	--	--	--	--	--	--	--	--	--	--	--	--	--	--	--	--	--	--	--	--	--	--	--	--	--	--	--	--	--	--	--	--	--	--	--	--	--	--	--	--	--	--	--	--	--	--	--	--	--	--	--	--	--	--	--	--	--	--	--	--	--	--	--	--	--	--	--	--	--	--	--	--	--	--	--	--	--	--	--	--	--	--	--	--	--	--	--	--	--	--	--	--	--	--	--	--	--	--	--	--	--

CONSULT INC

engineers planners

11010 Haskell Street, Suite 210, Kansas City, Kansas 66109

CORPORATE LICENSE No. E201000573 (MO.) / E-1736 (KS.)

3/11/19

Professional Engineer

R. KEVIN STERRETT, MO E-26440

FINAL DEVELOPMENT PLANS

OUR LADY OF PRESENTATION CHURCH - ADDITION AND RENOVATION

LEES SUMMIT- JACKSON COUNTY - MISSOURI

X-REF NO. 19-102 BASE

DRAWING NO. 19-102 PRELIMINARY PLAN

DATE MARCH 4, 2019

JOB NO. 19-102

C010