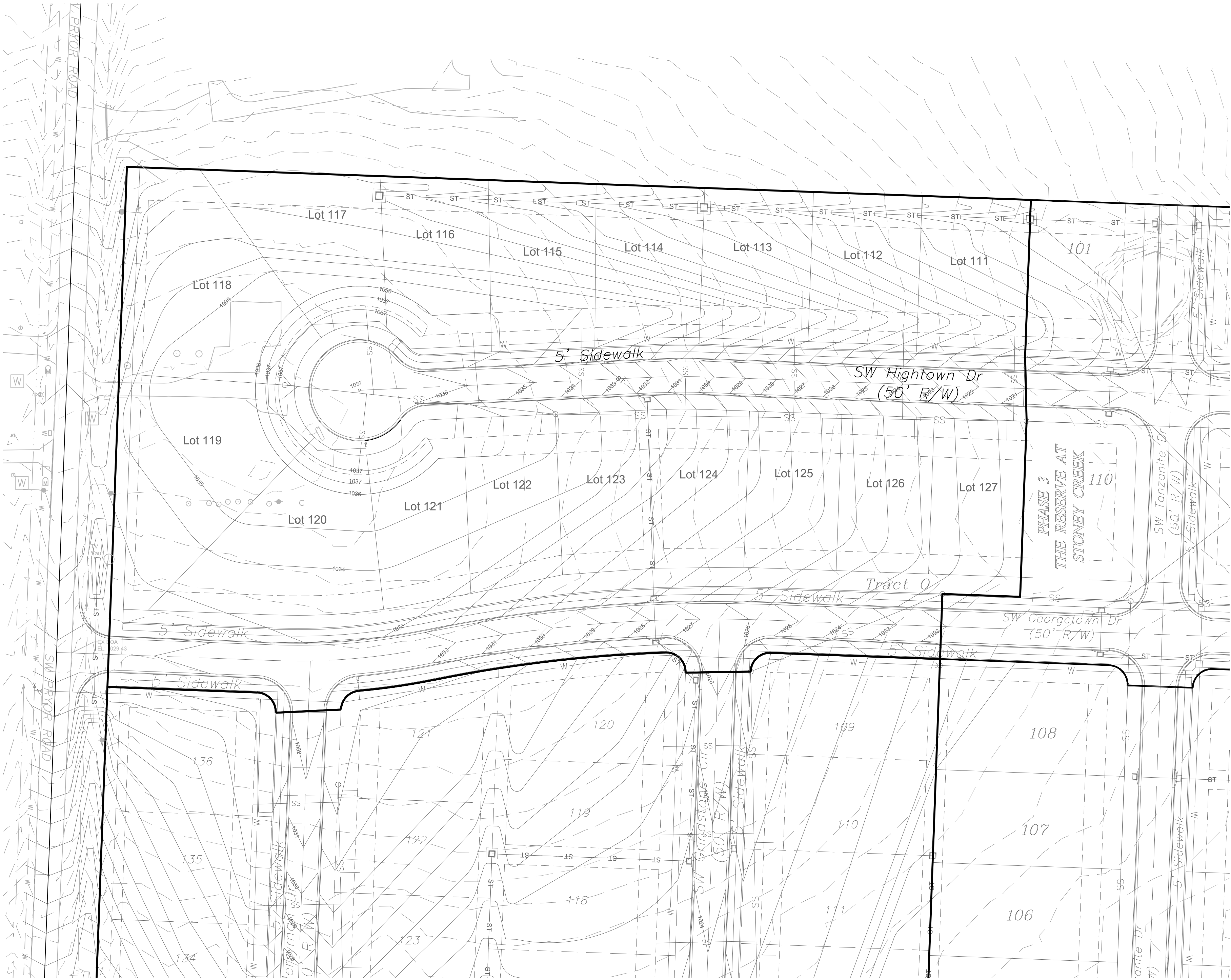
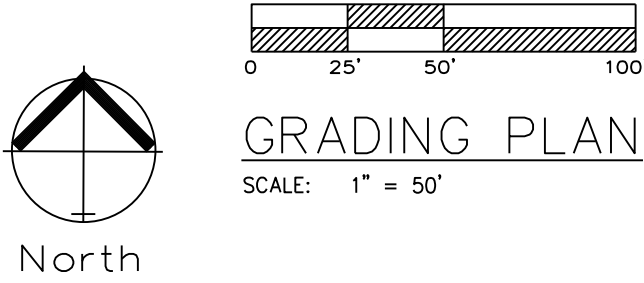


Notes

1. Contractor is responsible for verifying all existing utility locations prior to excavation
2. There are no known natural or artificial water storage detention areas, or wetlands in the area designated for construction
3. No part of the project lies within the 100 year flood plain
4. All erosion and sediment control measures need to be implemented prior to construction
5. Additional erosion control may be required by the City Engineer, Design Engineer or Owner at any time problematic areas are noted in the field or existing measures are found to be ineffective
6. Soil Stabilization of disturbed areas shall be completed within 14 days of construction inactivity
7. Contractor responsible for all density testing of roadway subgrade and granular base.

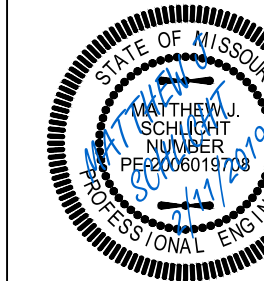


Master Drainage Plan 1 of 3:
Grading Plan
Construction Plans for:
The Reserve at Stoney Creek - 4th Plat
Lee's Summit, Jackson County, Missouri

Project:
RESERVE
AT STONEY
CREEK, 4TH PLAT
Issue:
August 2018

The Reserve at Stoney Creek - 4th Plat
Lee's Summit, Jackson County, Missouri

Professional Registration
Missouri
Engineering 2005002188-D
Surveying 200500019-D
Kansas
Engineering E-1895
Surveying LS-219
Oklahoma
Engineering 6254
Nebraska
Engineering CA2821



Matthew J. Schlicht
MO PE 2006019708
KS PE 19071
OK PE 25526

REVISIONS	
△	REV. 1-4-19
△	REV. 2-11-19

