

The Manor at Stoney Creek - 4th Plat

Lots 109 Thru 136 & Tract Q CONSTRUCTION PLANS

Part of the SW 1/4 Section 36, Township 47 N, Range 32 W
LEE'S SUMMIT, JACKSON COUNTY, MISSOURI

CONSTRUCTION AND DESIGN NOTES:

STREET & STORM SEWERS:

1 ~ STREET PAVEMENT SHALL CONSIST OF TYPE CG-2 CURBS WITH PAVEMENT PER TABLE LS-2 OF THE LEE'S SUMMIT DESIGN AND CONSTRUCTION MANUAL

RESIDENTIAL LOCAL STREET FOR SW MERRYMAN DRIVE AND SW GRINDSTONE CIRCLE. SEE THIS SHEET FOR TYPICAL SECTION.

OPTION 1) 4" TYPE II ASPHALT BASE AND 2" TYPE III ASPHALT SURFACE OVER A 6" MoDOT TYPE 5 BASE AND A SUBGRADE MIXTURE OF 6" FLY ASH STABILIZED SUBGRADE IN ACCORDANCE WITH THE CITY OF LEE'S SUMMIT DESIGN AND CONSTRUCTION MANUAL.

OPTION 2) 4" TYPE II ASPHALT BASE AND 2" TYPE III ASPHALT SURFACE OVER 8" MoDOT TYPE 5 BASE OVERTOP A BIAXIAL GEOGRID MEETING THE REQUIREMENTS OF TABLE 2201.6-1

2 ~ RESIDENTIAL LOCAL STREETS SHALL BE PER APWA STANDARD FOR 50' R/W TYPICAL SECTION TABLE LS-2 SECTION 5200 (RESIDENTIAL LOCAL STREET).

3 ~ STORM SEWER PIPE SHALL BE HIGH DENSITY POLYETHYLENE (HDPE) AS APPROVED BY CITY OF LEES SUMMIT DESIGN AND CONSTRUCTION MANUAL.

4 ~ CURB INLETS SHALL BE PER CITY OF LEES SUMMIT DRAWING NO. ST-1. FIELD INLETS SHALL BE PER CITY OF LEES SUMMIT STANDARD DRAWING STM-2.

WATER:

1 ~ THE CONTRACTOR SHALL NOTIFY THE CITY OF LEE'S SUMMIT WATER UTILITIES DEPARTMENT AT 816.969.1900 AT LEAST 48 HOURS PRIOR TO CONNECTING TO ANY EXISTING WATER MAIN.

2 ~ ALL WATER MAINS SHALL COMPLY WITH ANSI/AWWA C150/A21.50 AND C151/A21.51, AND CITY OF LEES SUMMIT STANDARDS.

3 ~ FIRE HYDRANTS SHALL BE OPTIC YELLOW WATEROUS "PACER" MODEL NO. WB-67-250 WITH NON-RISING STEM OR CITY ENGINEER APPROVED EQUAL. HYDRANTS SHALL HAVE A 5 1/4" VALVE WITH A 4 1/2" PUMPER NOZZLE AND 2 - 2 1/2" HOSE NOZZLES (LEFT HAND OPENING).

4 ~ GATE VALVES SHALL BE MUELLER NO. A 2380-5 HUB END "O" RING SEAL NON-RISING STEM. VALVES 12" OR LARGER SHALL BE BUTTERFLY VALVES MANUFACTURED BY THE HENRY PRATT COMPANY OR CITY ENGINEER APPROVED EQUAL. LEFT HAND OPENING. MINIMUM 200# TESTING AWWA.

5 ~ VALVE BOXES SHALL BE CLAY & BAILEY NO. P-108 OR CITY ENGINEER APPROVED EQUAL. ALL VALVE BOXES SHALL BE LOCATED OUT OF EXISTING OR PROPOSED PAVEMENT AREAS.

6 ~ ALL WATER MAINS SHALL BE CONSTRUCTED WITH A MINIMUM COVER OF 42 INCHES. STREET GRADING SHALL BE COMPLETED PRIOR TO BEGINNING CONSTRUCTION OF WATER MAINS.

7 ~ ALL BENDS, TEES AND FIRE HYDRANTS SHALL BE INSTALLED WITH SUITABLE CONCRETE THRUST BLOCKS POURED IN PLACE AGAINST UNDISTURBED EARTH AND PER CITY OF LEES SUMMIT AND APWA STANDARDS.

8 ~ THE MINIMUM SEPARATION BETWEEN THE PROPOSED WATER MAIN AND SANITARY OR STORM SEWERS IS AS FOLLOWS:

A ~ SANITARY SEWERS: HORIZONTAL = 10 FEET - VERTICAL = 18 INCHES

B ~ STORM SEWERS: HORIZONTAL = 5 FEET - VERTICAL = 18 INCHES

THESE SEPARATIONS SHALL PREVAIL OVER ANY DATA SHOWN IN THESE PLANS AND THE CONTRACTOR SHALL INSTALL BENDS OR OTHER FITTINGS AS NECESSARY TO ACHIEVE THE REQUIRED SEPARATIONS.

GENERAL NOTES:

1 ~ ALL CONSTRUCTION SHALL CONFORM TO THE CITY OF LEE'S SUMMIT DESIGN AND CONSTRUCTION MANUAL AS ADOPTED BY ORDINANCE 5813.

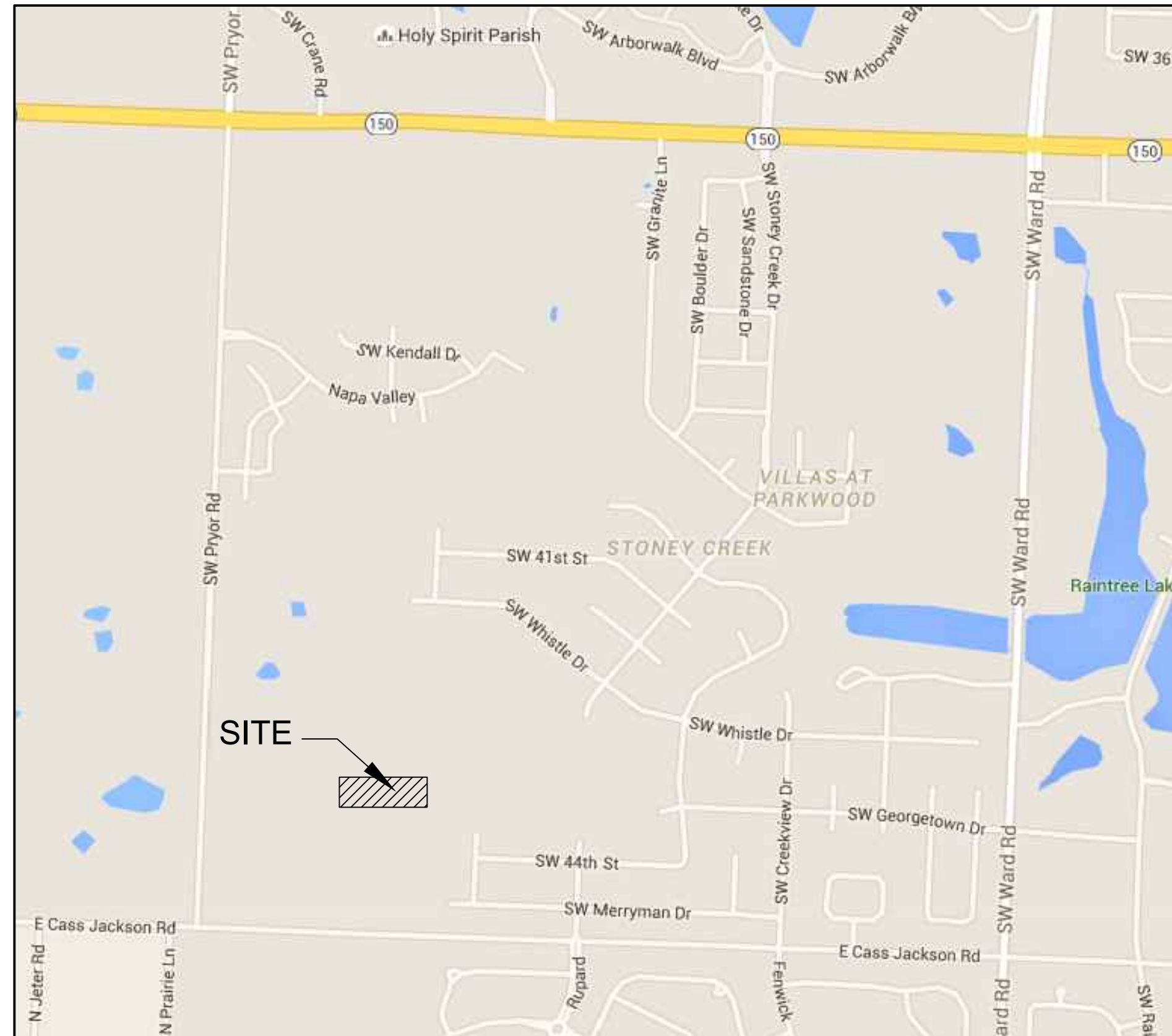
2 ~ ALL REQUIRED EASEMENTS WITHIN THE BOUNDARY OF THIS PROJECT SHALL BE PROVIDED FOR ON THE FINAL PLAT.

3 ~ ANY REQUIRED EASEMENT LOCATED OUTSIDE OF THE BOUNDARY OF THIS PROJECT SHALL BE PROVIDED FOR BY SEPARATE INSTRUMENT PRIOR TO ISSUANCE OF CONSTRUCTION PERMITS.

4 ~ THE CONTRACTOR SHALL NOTIFY THE CITY OF LEE'S SUMMIT DEVELOPMENT ENGINEERING INSPECTION AT 816.969.1200 AT LEAST 48 HOURS PRIOR TO THE COMMENCEMENT OF ANY CONSTRUCTION.

5 ~ THE CONTRACTOR SHALL NOTIFY ENGINEERING SOLUTIONS AT 816.623.9888 OF ANY CONFLICT WITH THE IMPROVEMENTS PROPOSED BY THESE PLANS AND SITE CONDITIONS.

6 ~ THE CONTRACTOR SHALL NOTIFY THE CITY ENGINEER AND OBTAIN THE APPROPRIATE BLASTING PERMITS FOR A REQUIRED BLASTING. IF BLASTING IS ALLOWED, ALL BLASTING SHALL CONFORM TO STATE REGULATIONS AND LOCAL ORDINANCES.



SITE LOCATION MAP

INDEX OF SHEETS:

C.001 ~ COVER SHEET
C.050 ~ ESC PHASE 1 - Pre Clearing Plan
C.051 ~ ESC PHASE 2 - Inactive Area Stabilization Plan
C.052 ~ ESC PHASE 3 - Final Restoration Plan
C.053 ~ ESC - Standard Details
C.100 ~ SITE PLAN
C.200 ~ MASTER DRAINAGE PLAN SHEET 1 OF 3 GRADING PLAN - SWPPP
C.201 ~ MASTER DRAINAGE PLAN SHEET 2 OF 3 SPOT ELEVATIONS
C.202 ~ MASTER DRAINAGE PLAN SHEET 3 OF 3 DRAINAGE AREA MAP
C.203 ~ STREET PLAN & PROFILE
C.204 ~ STREET SIGNAGE PLAN
C.300 ~ STORM SEWER GENERAL LAYOUT
C.301 ~ STORM SEWER PLAN & PROFILE
C.302 ~ STORM SEWER PLAN & PROFILE
C.303 ~ Storm Sewer Tables 10 and 100 Year
C.600 ~ CONSTRUCTION DETAILS
C.601 ~ CONSTRUCTION DETAILS

UTILITY COMPANIES:

THE FOLLOWING LIST OF UTILITY COMPANIES IS PROVIDED FOR INFORMATION ONLY. WE DO NOT OFFER ANY GUARANTEE OR WARRANTY THAT THIS LIST IS COMPLETE OR ACCURATE. THE CONTRACTOR SHALL BE RESPONSIBLE FOR CONTACTING ALL UTILITY COMPANIES THAT MAY BE AFFECTED BY THE PROPOSED CONSTRUCTION AND VERIFYING THE ACTUAL LOCATION OF EACH UTILITY LINE. THE CONTRACTOR SHALL NOTIFY ENGINEERING SOLUTIONS AT 816.623.9888 OF ANY CONFLICT WITH PROPOSED IMPROVEMENTS.

KCP&L ~ 298-1196
MISSOURI GAS ENERGY ~ 756-5261
SOUTHWESTERN BELL TELEPHONE ~ 761-5011
COMCAST CABLE ~ 795-1100
WILLIAMS PIPELINE ~ 422-6300
CITY OF LEE'S SUMMIT PUBLIC WORKS ~ 969-1800
CITY OF LEE'S SUMMIT DEVELOPMENT ENGINEERING INSPECTION AT 816.969.1200
CITY OF LEE'S SUMMIT WATER UTILITIES ~ 969-1900
MISSOURI ONE CALL (DIG RITE) ~ 1-800-344-7483

CORRECTED NOTE
DEVELOPMENT ENGINEERING
INSPECTION AT 816.969.1200

LEGEND:

B/L ~ BUILDING SET-BACK
C/A ~ COMMON AREA
D/E ~ DRAINAGE EASEMENT
FND. ~ FOUND
L/E ~ LANDSCAPE EASEMENT
L.N.A. ~ LIMITS OF NO ACCESS
R/W ~ RIGHT OF WAY
SAN ~ SANITARY SEWER LINE
S/W ~ SIDEWALK
U/E ~ UTILITY EASEMENT
W ~ WATER LINE
ST ~ STORM SEWER LINE

BENCHMARK:

CENTER OF SANITARY SEWER
MANHOLE LOCATED IN THE SE
CORNER OF THE LOT 123, FOXWOOD
EAST 5TH PLAT.

ELEVATION 945.69

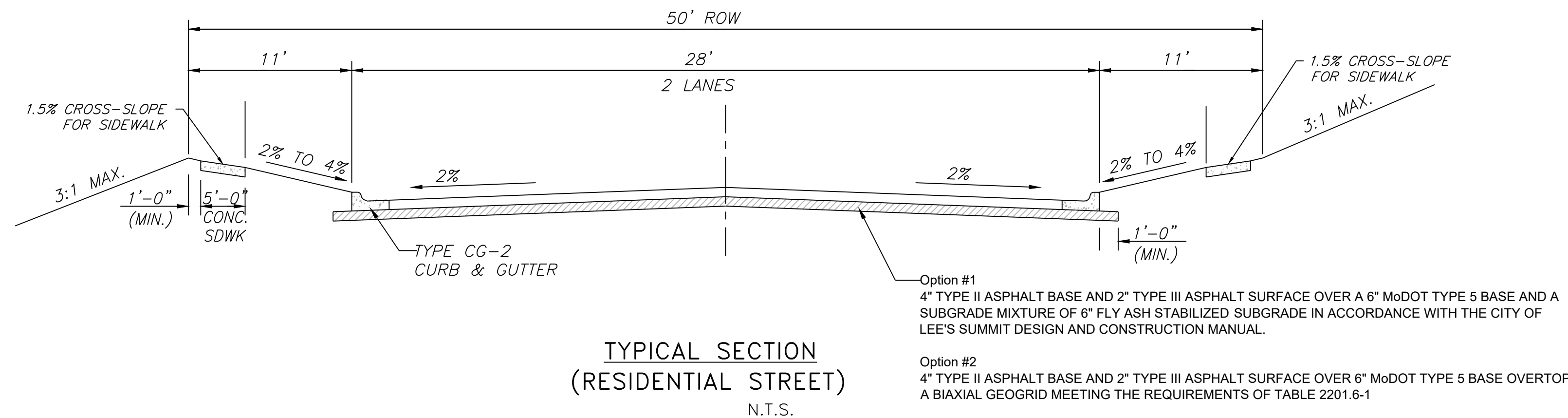
ENGINEER'S CERTIFICATION:

I HEREBY CERTIFY THAT THIS PROJECT HAS BEEN DESIGNED AND THESE PLANS PREPARED IN ACCORDANCE WITH THE CURRENT DESIGN CRITERIA OF THE CITY OF LEE'S SUMMIT, MISSOURI AND THE STATE OF MISSOURI. I FURTHER CERTIFY THAT THESE PLANS WERE DESIGNED IN ACCORDANCE TO AASHTO STANDARDS.

CITY OF LEE'S SUMMIT, MISSOURI

APPROVED: _____ DATE: _____

BY: _____
CITY ENGINEER

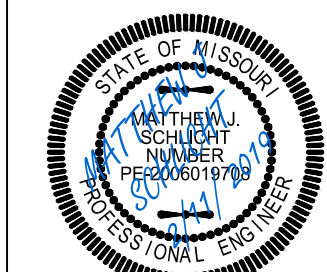


ENGINEERING
ENGINEERING & SURVEYING
SOLUTIONS
50 SE 30TH STREET
LEE'S SUMMIT, MO 64082
P: (816) 623-9888 F: (816) 623-9849

Professional Registration
Missouri
Engineering 2005002186-D
Surveying 2005008192-D
Kansas
Engineering E-1695
Surveying LS-219
Oklahoma
Engineering 6254
Nebraska
Engineering CA2821

Project: MANOR AT
STONEY CREEK
4TH PLAT
Issue Date:
August 29, 2018

Cover Sheet
Construction Plans for:
The Manor at Stoney Creek - 4th Plat
Lee's Summit, Jackson County, Missouri



Matthew J. Schlicht
MO PE 2006019708
KS PE 190071
OK PE 255226

REVISIONS
REV. 1-4-19
REV. 2-11-19

C.001