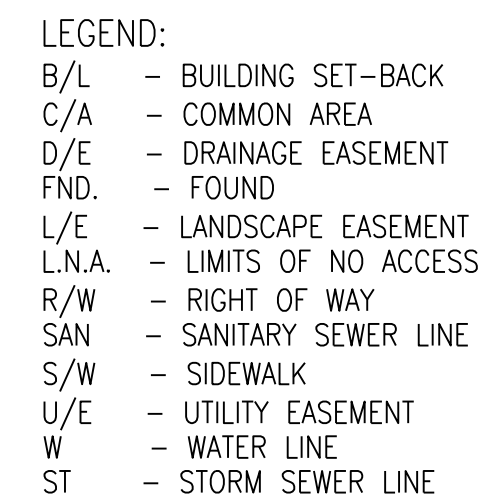


*Lots 111 Thru 127 & Tract O*  
**SANITARY SEWER CONSTRUCTION PLANS**  
*Part of the SW 1/4 Section 36, Township 47 N, Range 32 W*  
**LEE'S SUMMIT, JACKSON COUNTY, MISSOURI**

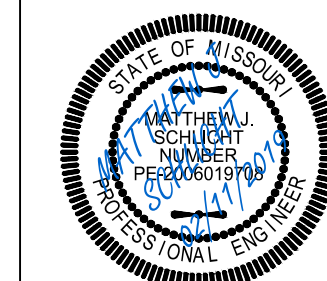
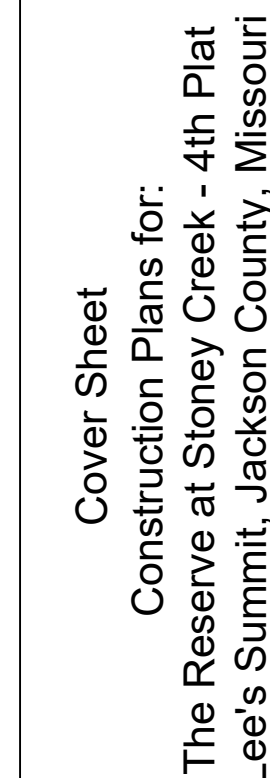
2 ~ TRENCH CHECKS SHALL BE INSTALL AT ALL SANITARY WYES LOCATION



C.400 ~ SANITARY SEWER COVER SHEET  
C.401 ~ SANITARY SEWER GENERAL LAYOUT  
C.402 ~ SANITARY SEWER PLAN & PROFILE  
C.403 ~ SANITARY SEWER DETAILS

I HEREBY CERTIFY THAT THIS PROJECT HAS BEEN DESIGNED AND THESE PLANS PREPARED IN ACCORDANCE WITH THE CURRENT DESIGN CRITERIA OF THE CITY OF LEE'S SUMMIT, MISSOURI AND THE STATE OF MISSOURI. I FURTHER CERTIFY THAT THESE PLANS WERE DESIGNED IN ACCORDANCE TO AASHTO STANDARDS.

BY: \_\_\_\_\_  
CITY ENGINEER



Matthew J. Schlicht  
MO PE 2006019708  
KS PE 19071  
OK PE 25226

REVISIONS	
1	REV. 1-4-19
2	REV. 2-11-19

C.400