

Revisions:

Date:	Description:

Preliminary Design  
Concepts

Downtown  
Lee's Summit

A Residential Development by

Cityscape  
Residential

This drawing as an instrument of  
services, is and shall remain the  
property of SGN+A and shall not  
be reproduced, published or used  
in any way without permission of  
SGN+A, Inc.

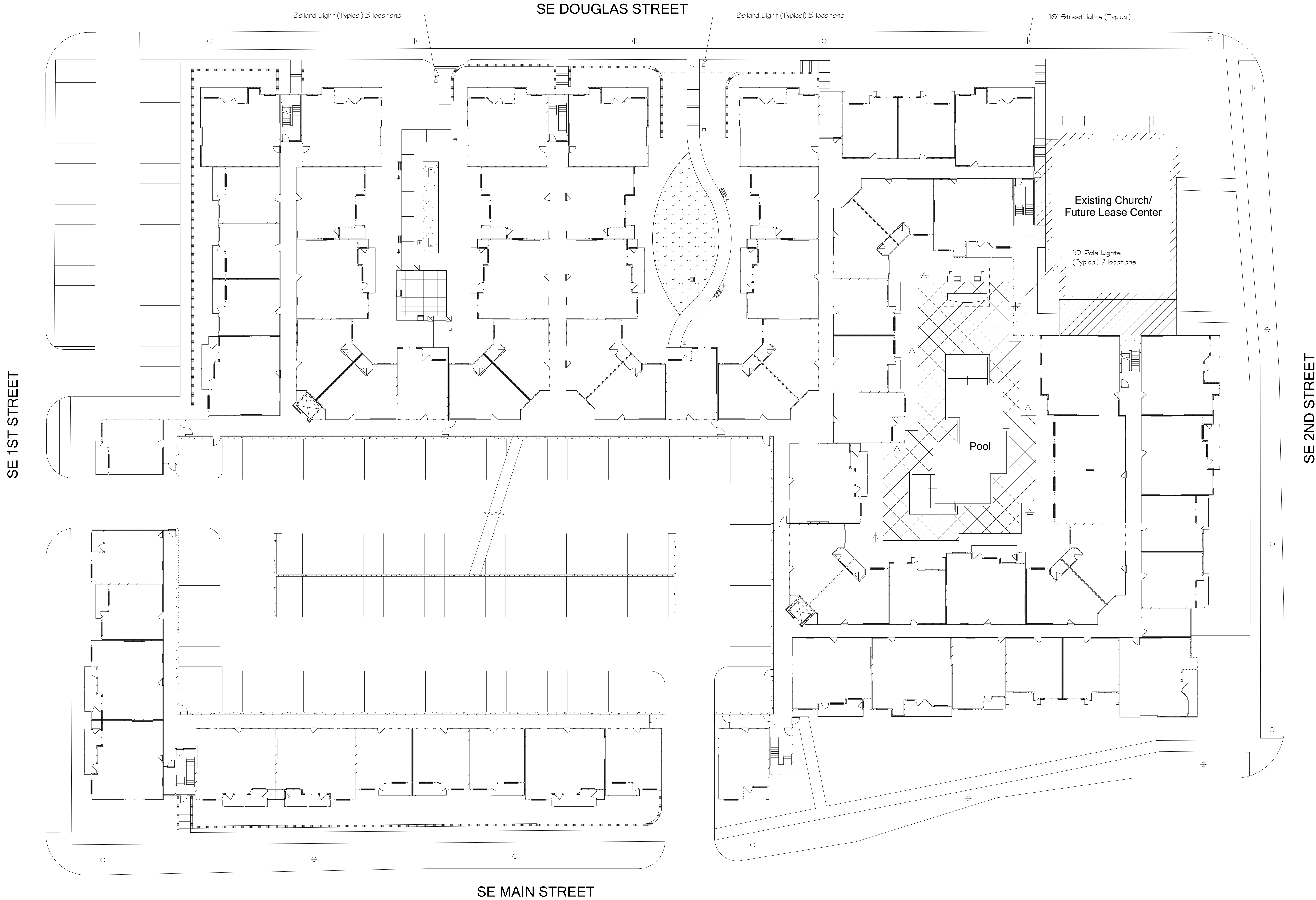
Sheet Title:  
Architectural Site Plan

Date:  
January 22, 2019

Sheet Number:

A1

Not Released for Construction



Revisions:

Date:	Description:

Preliminary Design  
Concepts

Downtown  
Lee's Summit

A Residential Development by  
**Cityscape**  
Residential

This drawing as an instrument of  
services, is and shall remain the  
property of SGN+A and shall not  
be reproduced, published or used  
in any way without permission of  
SGN+A, Inc.

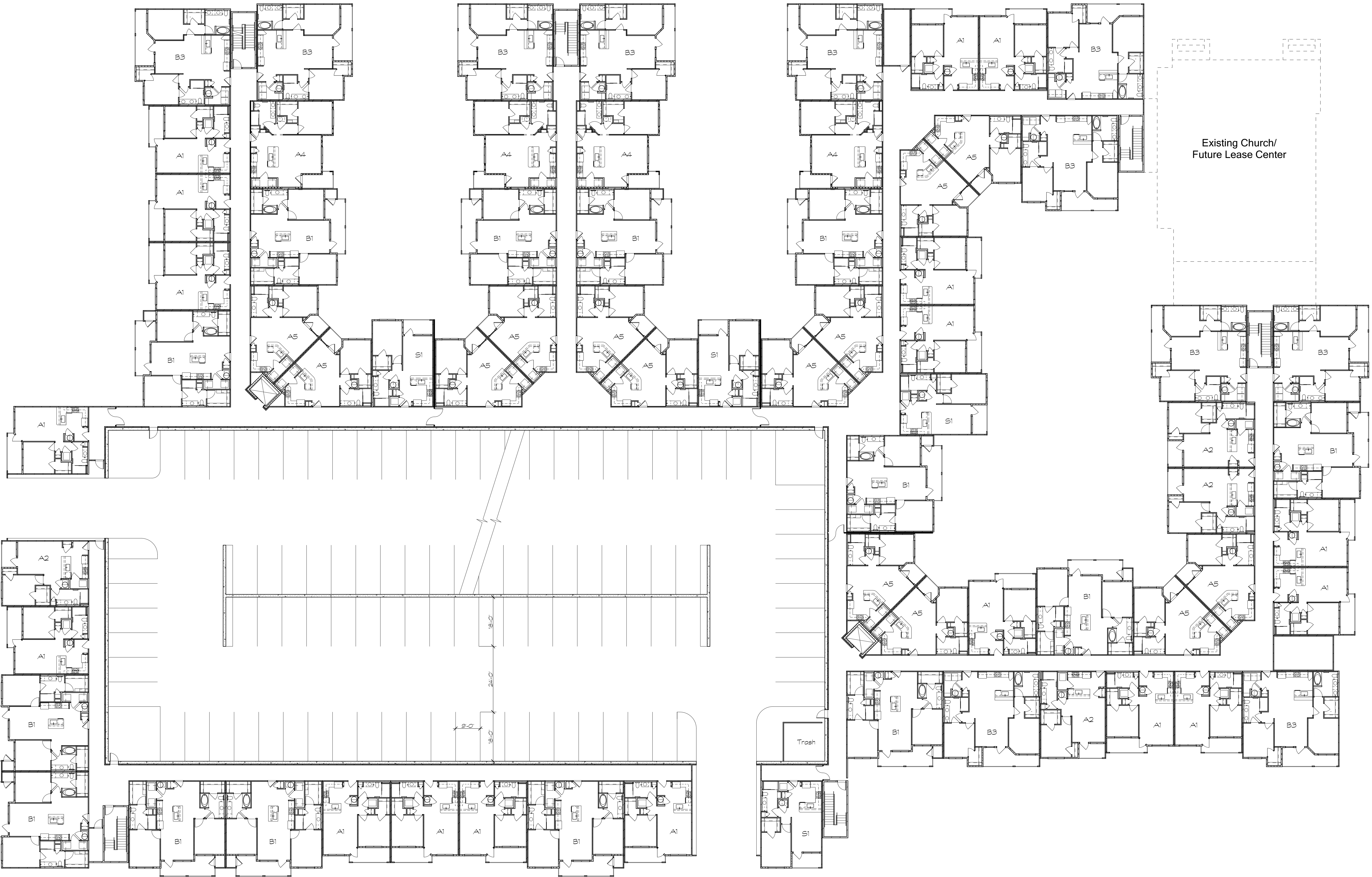
Sheet Title:  
Building Plan

Date:  
January 22, 2019

Sheet Number:

A2

Not Released for Construction



1 Typical Building Floor Plate  
Scale: 1/8" = 1'-0"

Revisions:

Date:	Description:

Preliminary Design  
Concepts

Downtown  
Lee's Summit

A Residential Development by

Cityscape  
Residential

This drawing as an instrument of  
services, is and shall remain the  
property of SGN+A and shall not  
be reproduced, published or used  
in any way without permission of  
SGN+A, Inc.

Sheet Title:  
Building Elevations

Date:  
January 22, 2019

Sheet Number:

A3

Not Released for Construction



1 SE Douglas Street Elevation  
Scale: 1/16" = 1'-0"



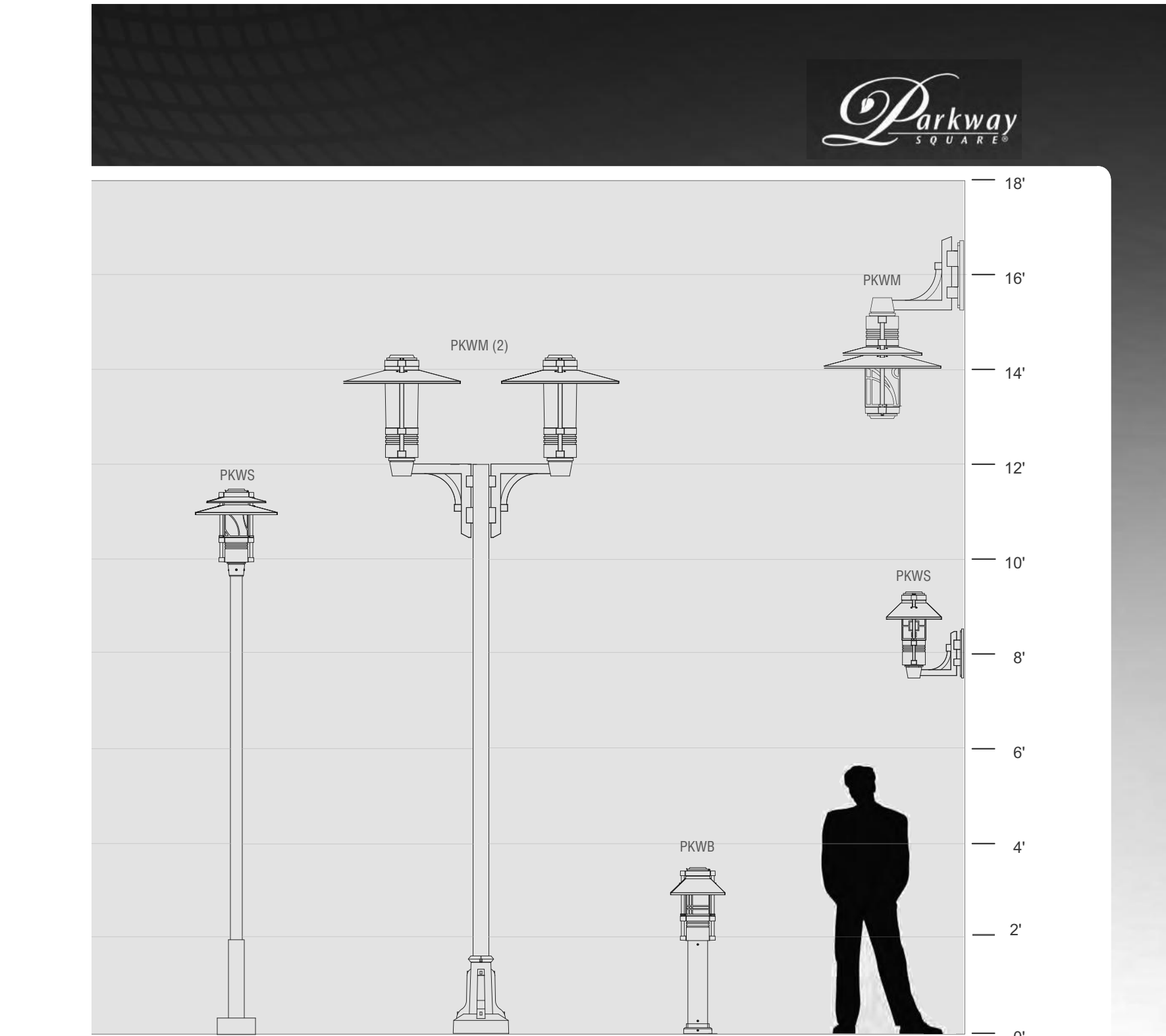
2 SE 2nd Street Elevation  
Scale: 1/16" = 1'-0"



3 SE Main Street Elevation  
Scale: 1/16" = 1'-0"



4 SE 1st Street Elevation  
Scale: 1/16" = 1'-0"



LUMINAIRE	PKWS (Accent)	PKWM (Pedestrian)	PKWB (Bollard)	PKWM/PKWS (Pedestrian/Small)
HOOD	DBL	STR	—	DBL/ANG
OPTICS	GLA 18LED-BW	YSVC-5K	GLA 12LED-BW	YSVC-32LED-5K/GLA 18LED-BW
OPTIONS	DSIN	—	DSOF	DSWH
ARM	—	PSA-TU(2)	—	PSWM-BD/PSWM-TD
POLE	PS3-SS10	PS4-AS12/ACBGS	—	—

Parway Square® – PKWS Small Scale

TYPE

**ELECTRICAL**  
The LED driver shall be integral to the fixture mounted on a prewired module with a quick disconnect plug. The driver module has two keyhole slots and is removable by loosening four screws. The driver shall accept 120 thru 277 volts input, with output drive current of 350ma. Standard color temperatures for LEDs shall be 3000K, 4000K, and 5000K. Rated luminous efficacy of luminaire shall be >40 lm/w, with rated light output of >1600 lumens for 5000K LED, standard mount.

**INSTALLATION & MOUNTING**  
The PKWS shall be factory supplied as a complete, prewired assembly. The fixture shall slip over a 3/75mm open top round pole or 4/100mm pole mounted arm and secured and leveled with 4 stainless steel set screws

**FINISH**  
Fixture finish consists of a five stage pretreatment regimen with a polymer primer sealer, oven dry off and top coated with a thermoset super IGIC polyester powder coat finish. The finish shall meet the AAMA 605.2 performance specification which includes passing a 3000 hour salt spray test for corrosion resistance.

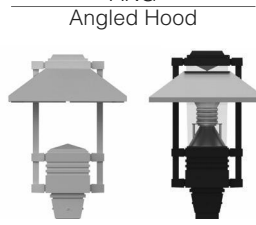
**CERTIFICATION**  
The fixture is listed with ETL for outdoor, wet location use. Conforms to UL1998 and Canadian CSA Std. C22.2 no.9. IP66 rated for horizontal configurations and IP66 rated for vertical configurations.

**WARRANTY / TERMS AND CONDITIONS OF SALE**  
Download:  
<http://www.hubbellingighting.com/resources/warranty/>

AAL reserves the right to change product specifications without notice.

DIMENSIONS

HOOD



Horizontal Optics  
HT: 23/584 mm  
DIA: 147/356 mm  
EPA: 1.68  
WT: 34 lbs.



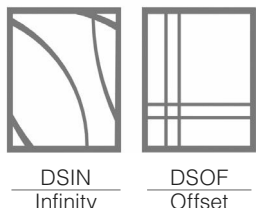
Vertical Optics  
HT: 21.75/553 mm  
DIA: 147/356 mm  
EPA: 1.46  
WT: 44 lbs.



Vertical Optics  
HT: 21.75/553 mm  
DIA: 217/533 mm  
EPA: 1.52  
WT: 46 lbs.

DECORATIVE SCREENS

Painted to match fixture. Also available in stainless steel or copper. Not available with horizontal optics.



PKWS T5 36LED BW

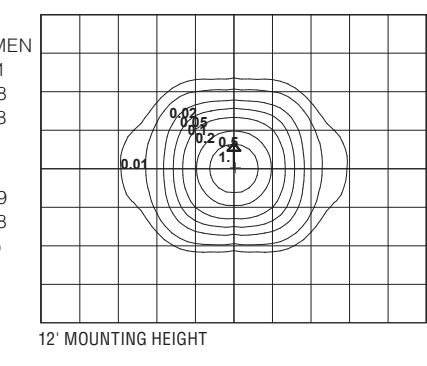
WATTAGE: 38.9 LUMEN OUTPUT: 1961EFFICACY: 50.4 Lm/W

B1 UO G0

FORWARD LIGHT	LUMEN
FL 30° 15.9%	311
FM 60° 29.0%	568
FH 80° 5.5%	108
FVH 90° 0.3%	6

BACK LIGHT	LUMEN
BL 30° 15.8%	309
BM 60° 28.4%	558
BH 80° 4.8%	95
BVH 90° 0.3%	5

UPLIGHT	LUMEN
UL 100° 0%	0
UH 180° 0%	0



IES files can be found at [www.aal.net](http://www.aal.net)

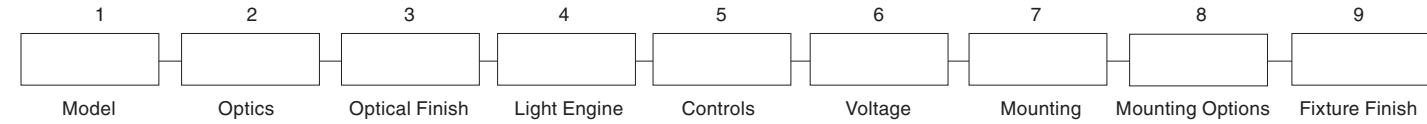
Parway Square® – PKWS Small Scale

TYPE

FEATURES

- Three hood styles
- Six decorative screen options
- Post-top, wall mount, or pole mount arm
- Cast aluminum struts
- Full cutoff options
- Powder coat finish in 13 standard colors with a polymer primer sealer

ORDERING CODE



1. LUMINAIRE

PKWS Parway Square Accent (small scale)

2. HOOD

ANGLED ANG STRAIGHT STR DOUBLE DBL

3. OPTICS

HORIZONTAL (ANG hood and LEDs only. Flat glass lens)

T1 (Type 1) T3 (Type 3 DLC Listed) T5 (Type 5 DLC Listed)

VERTICAL

GLA (Frosted glass diffuser)

4. LAMP/BALLAST

LED Warm white (3000K) Neutral white (4000K) Bright white (5000K) Class 2 120 thru 277 volt

36LED-WW 36LED-NW 36LED-BW  
9LED-WW 9LED-NW 9LED-BW  
18LED-WW 18LED-NW 18LED-BW

Note: 1 9LED configurations not dimmable

5. DECORATIVE SCREEN (Painted to match fixture. Also available in stainless steel or copper. Not available with horizontal optics)

INFINITY OFFSET WHEAT  
DSIN DSOF DSWH  
TRIO SHUTTER CUSTOM  
DSTR DSSH DSCS

6. FIXTURE FINISH

Standard Color

WH Arctic White  
BL Black  
BLT Matte Black  
DB Dark Bronze  
DGN Dark Green  
TT Titanium  
WDB Weathered Bronze  
MDB Bronze Metallic  
VBU Verde Blue  
CRT Corten  
MAL Matte Aluminum  
MG Medium Gray  
AGN Antique Green  
LG Light Gray

Premium Color

SHK Shamrock  
SPP Salt and Pepper  
SFM Saffron  
WCP Weathered Copper  
RAL RAL 4 digit Color  
CUSTOM Custom Color

7. OPTIONS

GENERAL

ULS (Upper lens shield)

LDL (Lightly diffused lens)

HOOD COP (Copper)

DECORATIVE SCREEN COP (Copper)

SSP (Stainless steel)

8. MOUNTING – Standard fixture shall slip over a 3" / 76mm pole or fence or may choose one

ARM POLE MOUNT (Mounts to the side of a 4" / 102mm diameter pole or post)

PSA-TU (Fixture above with up-swept arm)

PSA-TD (Fixture above with down-swept arm)

PSA-BU (Fixture below with up-swept arm)

PSA-BD (Fixture below with down-swept arm)

WALL MOUNT

PSWM-TU (Fixture above with up-swept arm)

PSWM-TD (Fixture above with down-swept arm)

PSWM-BU (Fixture below with up-swept arm)

PSWM-BD (Fixture below with down-swept arm)

SPECIFICATIONS

HOUSING

Housing shall be cast aluminum, A356 alloy, free of any porosity, foreign materials, or cosmetic fillers. The driver assembly is mounted internally and accessed by loosening four captive bolts and lifting away the lamp compartment. The lamp compartment is sealed with a molded silicone gasket. The reflector cone is matte finished aluminum. All lenses are molded, seamless high impact lighting grade acrylic. The lens shall be sealed to the housing with a molded silicone gasket on the top and bottom. The vertical struts are cast aluminum and painted to match the fixture. All internal and external hardware is stainless steel. The fixture shall slip over a 3/76mm round post top and secured with four stainless steel set screws. The hood is formed from 5052 H32 aluminum, 304 stainless steel or 110 copper. For indirect models, the underside of the painted, copper, and stainless steel hoods are finished in a high reflectance white powder coating. Copper hoods are unfinished to develop a patina.

The GLA element shall be frosted borosilicate glass with a twist on connection to the lower cone assembly. The cone is matte finished anodized aluminum.

Revisions:

Date: Description:

Peliminary Design  
Concepts

Downtown  
Lee's Summit

A Residential Development by

Cityscape  
Residential

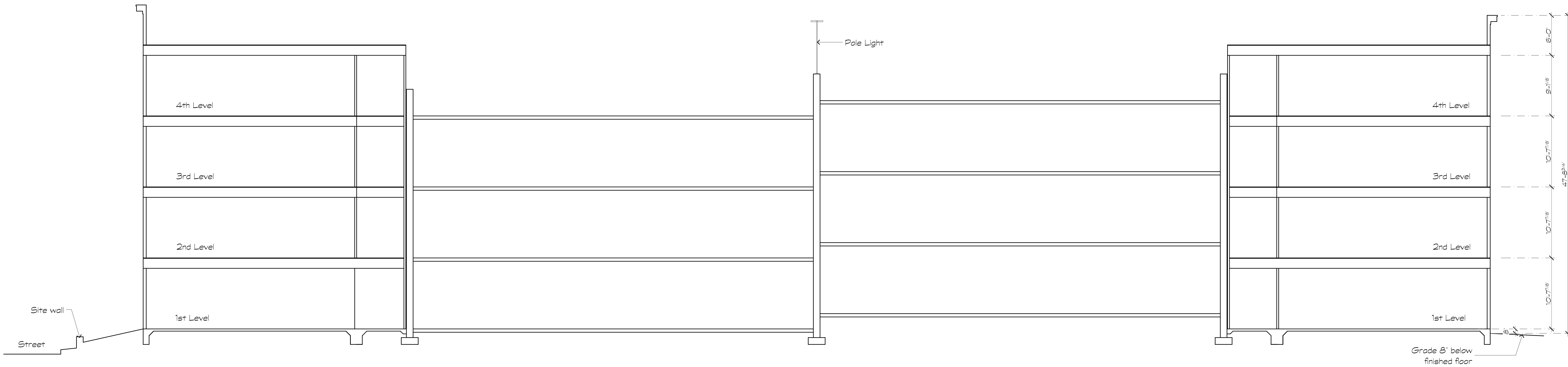
This drawing as an instrument of services, is and shall remain the property of SGN+A and shall not be reproduced, published or used in any way without permission of SGN+A, Inc.

Sheet Title:  
Lighting Cut Sheets &  
Building Section

Date:  
January 22, 2019

Sheet Number:

A4



1 Building Section  
Scale 1/8" = 1'-0"





1 Material Imagery

Revisions:

Date:	Description:

Preliminary Design  
Concepts

Downtown  
Lee's Summit

A Residential Development by

Cityscape  
Residential

This drawing as an instrument of  
services, is and shall remain the  
property of SGN+A and shall not  
be reproduced, published or used  
in any way without permission of  
SGN+A, Inc.

Sheet Title:  
Material Imagery

Date:  
January 22, 2019

Sheet Number:

A5