

Revisions:

Date:	Description:

Preliminary Design
Concepts

Downtown
Lee's Summit

A Residential Development by

Cityscape
Residential

This drawing as an instrument of
services, is and shall remain the
property of SGN+A and shall not
be reproduced, published or used
in any way without permission of
SGN+A, Inc.

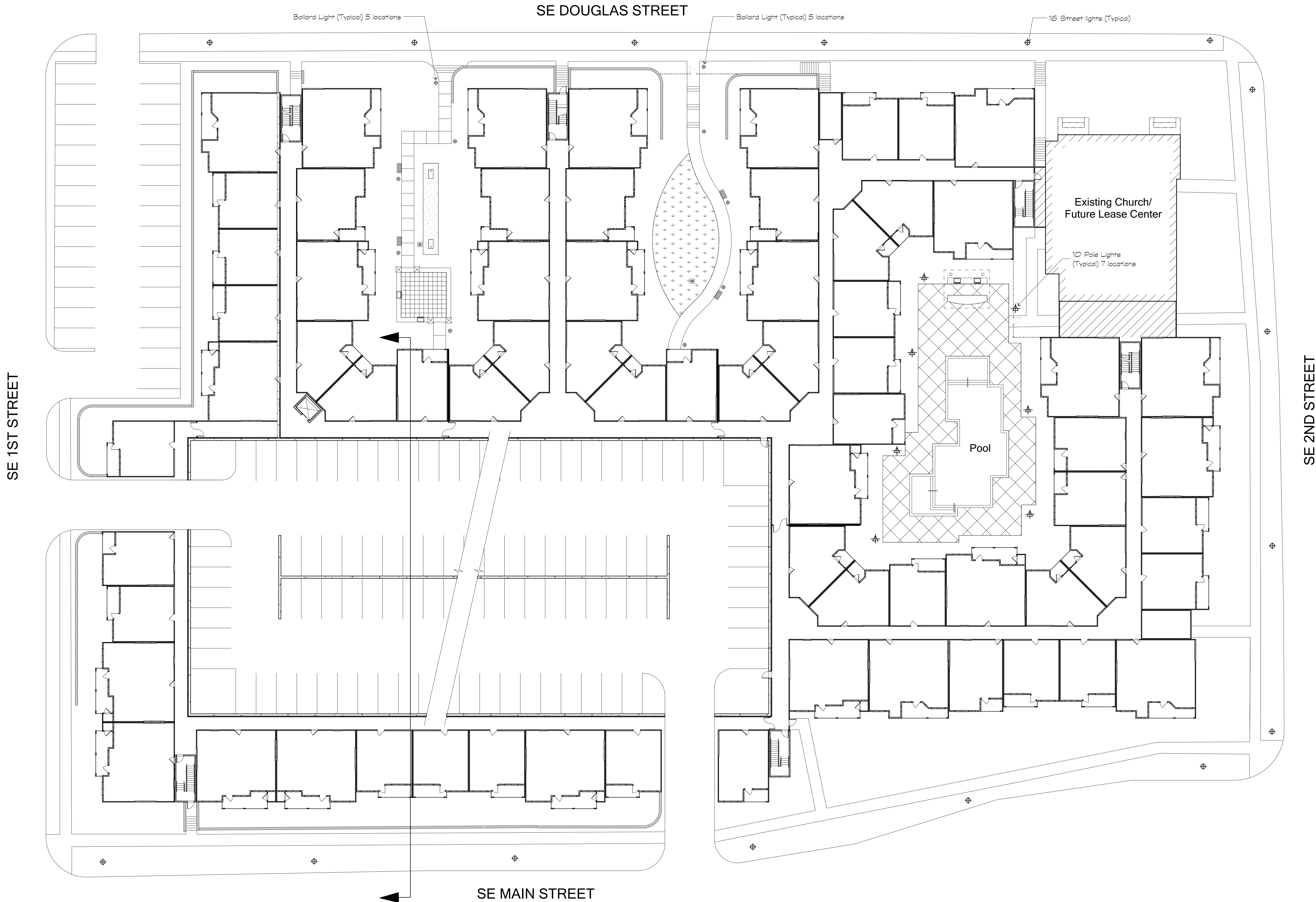
Sheet Title:
Architectural Site Plan

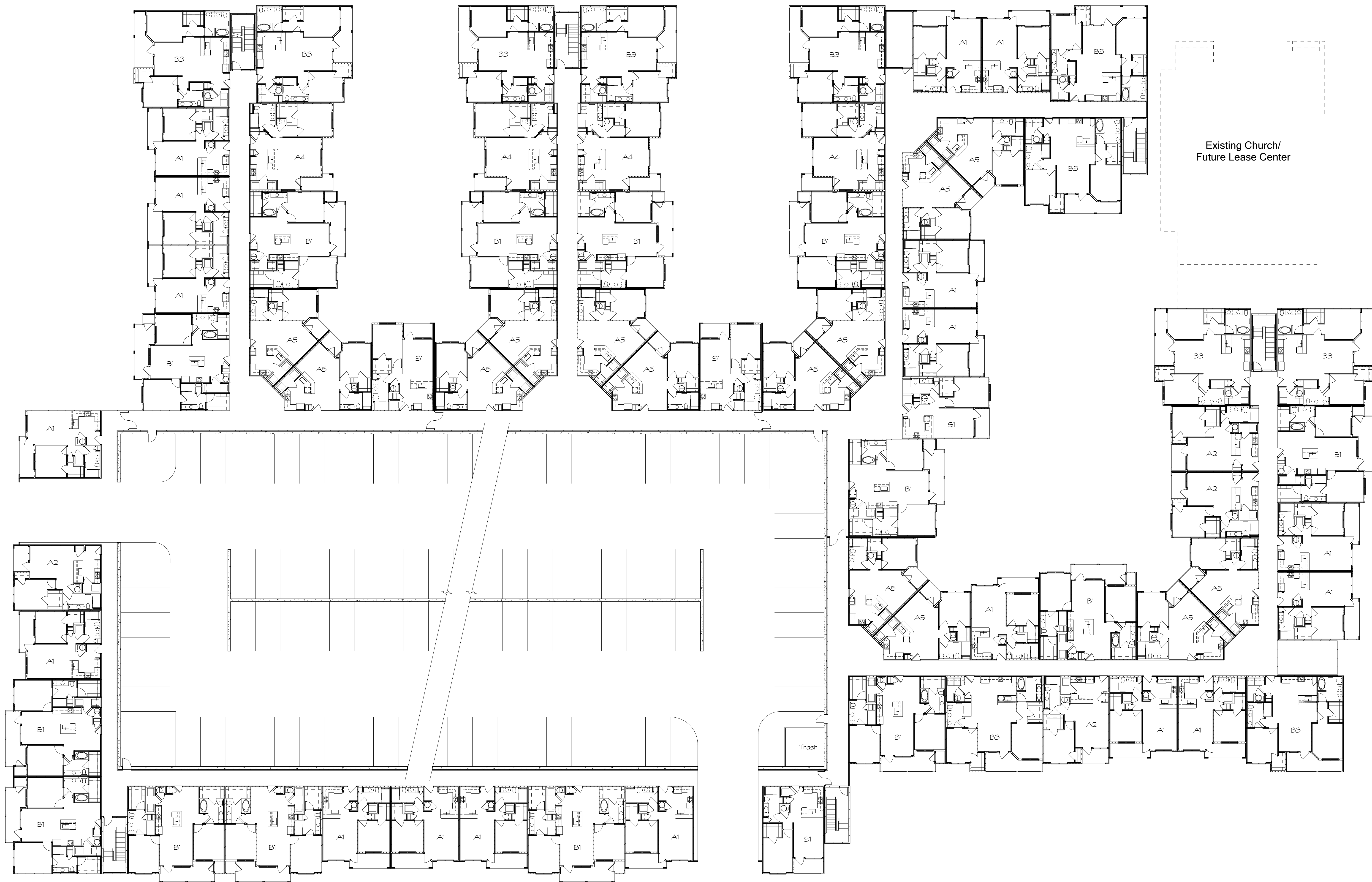
Date:
December 20, 2018

Sheet Number:

A1

Not Released for Construction





1 Building Plan
Scale: 1/16" = 1'-0"

Revisions:	
Date:	Description:

Preliminary Design
Concepts

Downtown Lee's Summit

A Residential Development by
Cityscape
Residential

This drawing as an instrument of
services, is and shall remain the
property of SGN+A and shall not
be reproduced, published or used
in any way without permission of
SGN+A, Inc.

Sheet Title:
Building Plan

Date:
December 20, 2018

Sheet Number:

A2

Revisions:

Date:	Description:

Preliminary Design
Concepts

Downtown
Lee's Summit

A Residential Development by

Cityscape
Residential

This drawing as an instrument of
services, is and shall remain the
property of SGN+A and shall not
be reproduced, published or used
in any way without permission of
SGN+A, Inc.

Sheet Title:
Building Elevations

Date:
December 20, 2018

Sheet Number:

A3

Not Released for Construction



1 Building Elevation
Scale: 1/16" = 1'-0"



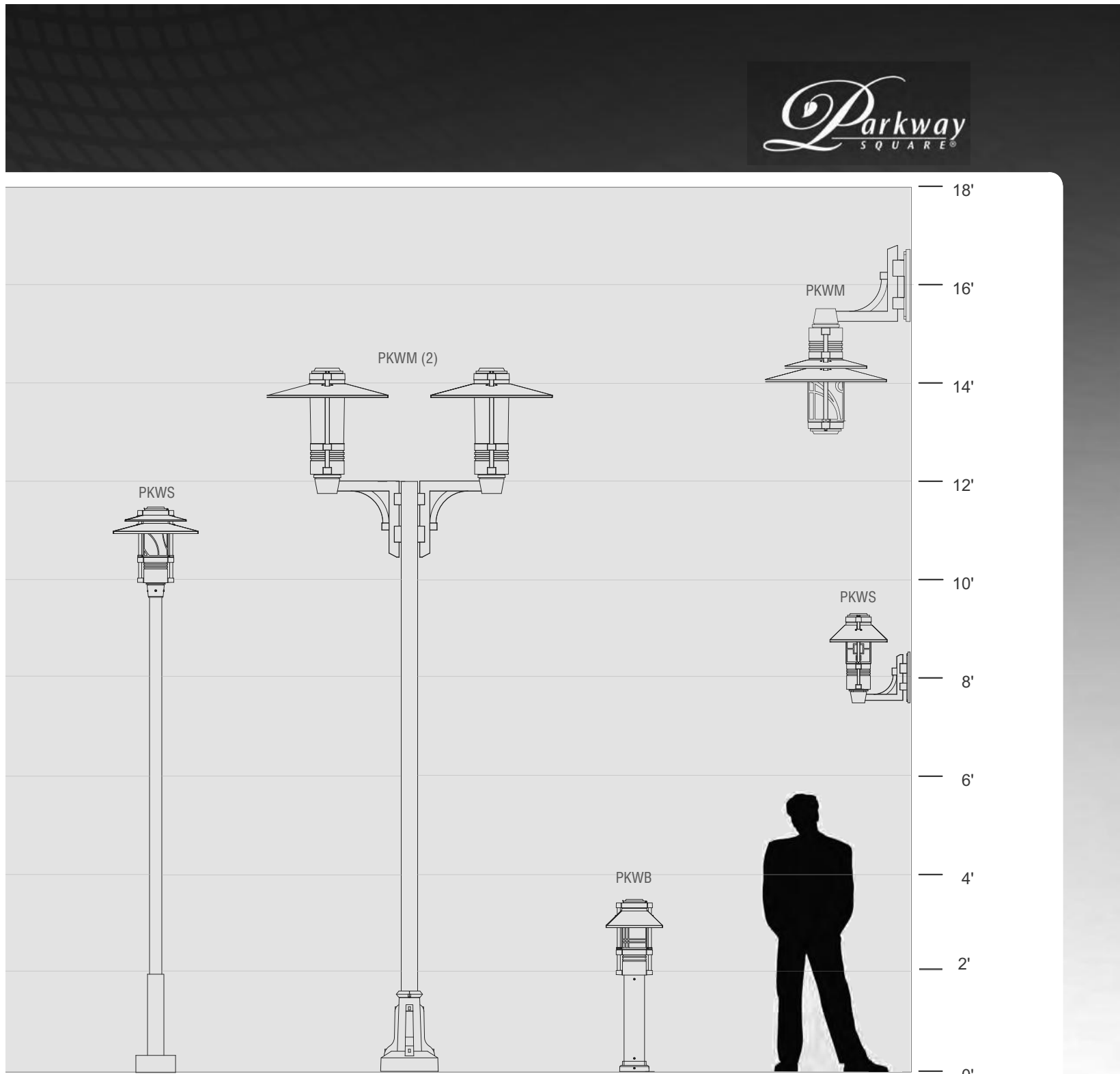
2 Building Elevation
Scale: 1/16" = 1'-0"



3 Building Elevation
Scale: 1/16" = 1'-0"



4 Building Elevation
Scale: 1/16" = 1'-0"



LUMINAIRE	PKWS (Accent)	PKWM(2) (Pedestrian)	PKWB (Bollard)	PKWM/PKWS (Pedestrian/Small)
HOOD	DBL	STR	—	DBL/ANG
OPTICS	GLA 18LED-BW	YSVC-5K	GLA 12LED-BW	YSVC-32LED-5K/GLA 18LED-BW
OPTIONS	DSIN	—	DSOF	DSWH
ARM	—	PSA-TU(2)	—	PSWM-BD/PSWM-TD
POLE	PS3-SS10	PS4-AS12/ACBGS	—	—

PARKWAY SQUARE 19

Parway Square® – PKWS Small Scale

TYPE

ELECTRICAL
The LED driver shall be integral to the fixture mounted on a prewired module with a quick disconnect plug. The driver module has two keyhole slots and is removable by loosening four screws. The driver shall accept 120 thru 277 volts input, with output drive current of 350ma. Standard color temperatures for LEDs shall be 3000K, 4000K, and 5000K. Rated luminous efficacy of luminaire shall be >40 lm/w, with rated light output of >1600 lumens for 5000K LED, standard mount.

INSTALLATION & MOUNTING
The PKWS shall be factory supplied as a complete, prewired assembly. The fixture shall slip over a 3/75mm open top round pole or 4/100mm pole mounted arm and secured and leveled with 4 stainless steel set screws

FINISH
Fixture finish consists of a five stage pretreatment regimen with a polymer primer sealer, oven dry off and top coated with a thermoset super IGIC polyester powder coat finish. The finish shall meet the AAMA 605.2 performance specification which includes passing a 3000 hour salt spray test for corrosion resistance.

CERTIFICATION
The fixture is listed with ETL for outdoor, wet location use. Conforms to UL1998 and Canadian CSA Std. C22.2 no.9. IP66 rated for horizontal configurations and IP66 rated for vertical configurations.

WARRANTY / TERMS AND CONDITIONS OF SALE
Download:
<http://www.hubbellingighting.com/resources/warranty/>

AAL reserves the right to change product specifications without notice.



DIMENSIONS

HOOD

ANG

Angled Hood

STR

Straight Hood

DBL

Double Hood

Horizontal Optics

Vertical Optics

HT: 23/584 mm

HT: 21.75/553 mm

DIA: 14/356 mm

DIA: 21.75/533 mm

EPA: 1.68

EPA: 1.46

EPA: 1.52

WT: 34 lbs.

WT: 44 lbs.

WT: 45 lbs.

WT: 46 lbs.

DECORATIVE SCREENS

Painted to match fixture. Also available in stainless steel or copper. Not available with horizontal optics.

DSIN

DSOF

DSWH

DSTR

DSSH

Shutter

AAL

PKWS T5 36LED BW

WATTAGE: 38.9 LUMEN OUTPUT: 1961EFFICACY: 50.4 Lm/W

B1 UO G0

FORWARD LIGHT

LUMEN

FL 30° 15.9%

FM 60° 29.0%

FH 80° 5.5%

FVH 90° 0.3%

BACK LIGHT

BL 30° 15.8%

BM 60° 28.4%

BH 80° 4.8%

BVH 90° 0.3%

UPLIGHT

UL 100° 0%

UH 180° 0%

UPLIGHT 0%

DOWNLIGHT 100%

12' MOUNTING HEIGHT

IES files can be found at www.aal.net

Parway Square® – PKWS Small Scale

TYPE

FEATURES

Three hood styles

Six decorative screen options

Post-top, wall mount, or pole mount arm

Cast aluminum struts

Full cutoff options

Powder coat finish in 13 standard colors with a polymer primer sealer

ORDERING CODE

1. LUMINAIRE

PKWS

Parway Square Accent (small scale)

2. HOOD

ANGLED

STR

DOUBLE

3. OPTICS

HORIZONTAL (ANG hood and LEDs only. Flat glass lens)

T1 (Type 1)

T3 (Type 3 DLC Listed)

T5 (Type 5 DLC Listed)

VERTICAL

GLA (Frosted glass diffuser)

4. LAMP/BALLAST

LED Warm white (3000K) Neutral white (4000K) Bright white (5000K) Class 2 120 thru 277 volt

36LED-WW 36LED-NW 36LED-BW

GLA only

9LED-WW 9LED-NW 9LED-BW

18LED-WW 18LED-NW 18LED-BW

Note: 1 9LED configurations not dimmable

5. DECORATIVE SCREEN (Painted to match fixture. Also available in stainless steel or copper. Not available with horizontal optics)

INFINITY

DSOF

DSWH

WHEAT

TRIO

SHUTTER

CUSTOM

DSTR

DSSH

DSCS

6. FIXTURE FINISH

Standard Color

WH Arctic White

BL Black

BLT Matte Black

DB Dark Bronze

DGN Dark Green

TT Titanium

WDB Weathered Bronze

MDB Bronze Metallic

VBU Verde Blue

CRT Corten

MAL Matte Aluminum

MG Medium Gray

AGN Antique Green

LG Light Gray

Premium Color

SHK Shamrock

SPP Salt and Pepper

SFM Saffron

WCP Weathered Copper

RAL RAL 4 digit Color

CUSTOM Custom Color

7. OPTIONS

GENERAL

ULS (Upper lens shield)

LDL (Lightly diffused lens)

HOOD

COP (Copper)

STS (Stainless steel)

DECORATIVE SCREEN

CPR (Copper)

SSP (Stainless steel)

8. MOUNTING – Standard fixture shall slip over a 3" / 76mm pole or fence or may choose one

ARM POLE MOUNT (Mounts to the side of a 4" / 102mm diameter pole or post)

PSA-TU (Fixture above with up-swept arm)

PSA-TD (Fixture above with down-swept arm)

PSA-BU (Fixture below with up-swept arm)

PSA-BD (Fixture below with down-swept arm)

WALL MOUNT

PSWM-TU (Fixture above with up-swept arm)

PSWM-TD (Fixture above with down-swept arm)

PSWM-BU (Fixture below with up-swept arm)

PSWM-BD (Fixture below with down-swept arm)



PKWS

SPECIFICATIONS

HOUSING

Housing shall be cast aluminum, A356 alloy, free of any porosity, foreign materials, or cosmetic fillers. The driver assembly is mounted internally and accessed by loosening four captive bolts and lifting away the lamp compartment. The lamp compartment is sealed with a molded silicone gasket. The reflector cone is matte finished aluminum. All lenses are molded, seamless high impact lighting grade acrylic. The lens shall be sealed to the housing with a molded silicone gasket on the top and bottom. The vertical struts are cast aluminum and painted to match the fixture. All internal and external hardware is stainless steel. The fixture shall slip over a 3/76mm round post top and secured with four stainless steel set screws. The hood is formed from 5052 H32 aluminum, 304 stainless steel or 110 copper. For indirect models, the underside of the painted, copper, and stainless steel hoods are finished in a high reflectance white powder coating. Copper hoods are unfinished to develop a patina.

The GLA element shall be frosted borosilicate glass with a twist on connection to the lower cone assembly. The cone is matte finished anodized aluminum.

Revisions:

Date: Description:

Peliminary Design
Concepts

Downtown
Lee's Summit

A Residential Development by

Cityscape
Residential

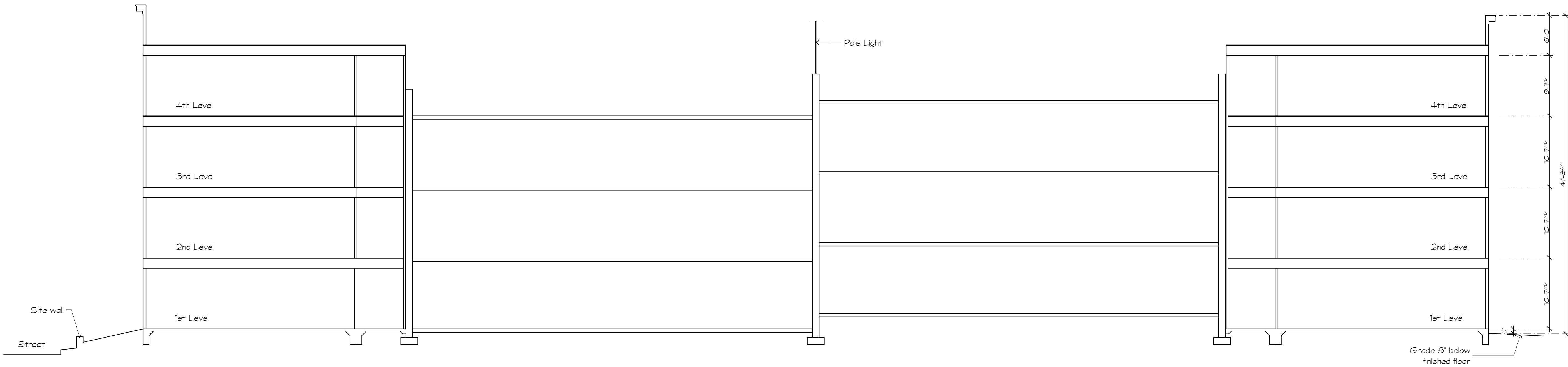
This drawing as an instrument of services, is and shall remain the property of SGN+A and shall not be reproduced, published or used in any way without permission of SGN+A, Inc.

Sheet Title:
Lighting Cut Sheets &
Building Section

Date:
December 20, 2018

Sheet Number:

A4



1 Building Section
Scale 1/8" = 1'-0"



1 Material Imagery

Revisions:

Date:	Description:

Preliminary Design
Concepts

Downtown
Lee's Summit

A Residential Development by

Cityscape
Residential

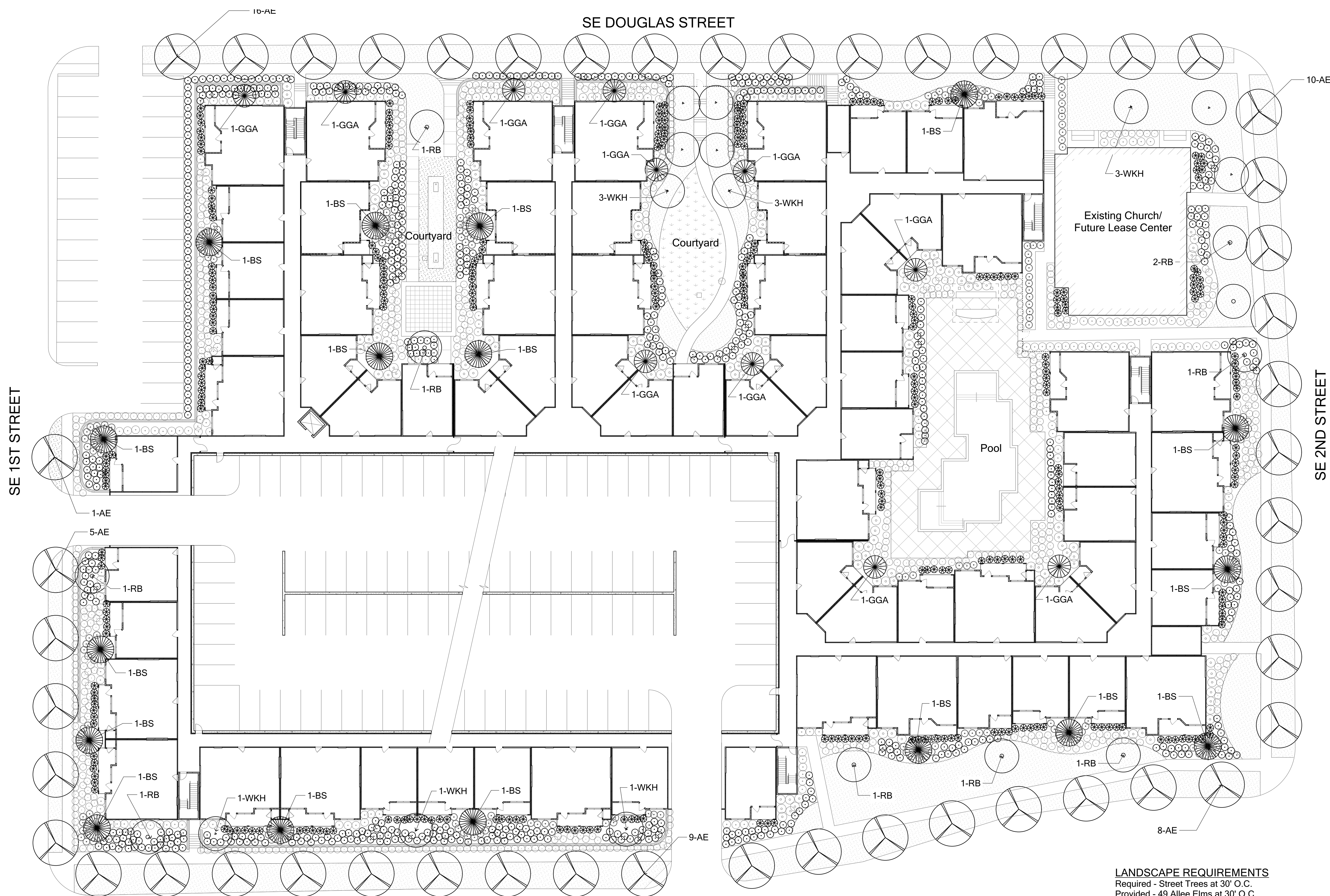
This drawing as an instrument of
services, is and shall remain the
property of SGN+A and shall not
be reproduced, published or used
in any way without permission of
SGN+A, Inc.

Sheet Title:
Material Imagery

Date:
December 20, 2018

Sheet Number:

A5



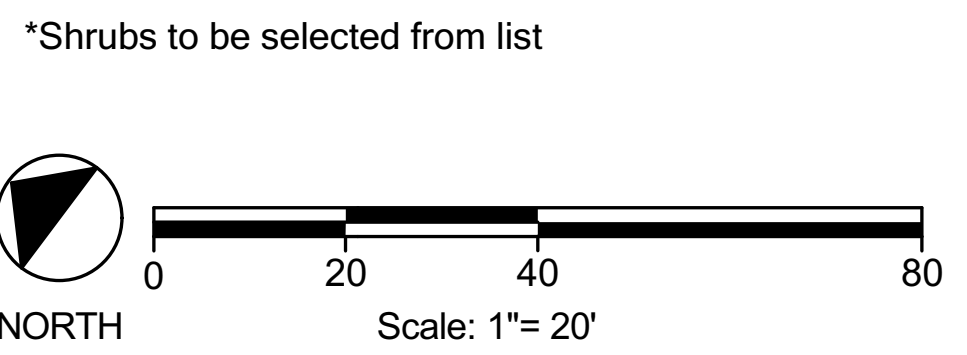
TREES						
QNTY	PLAN NAME	BOTANICAL NAME	COMMON NAME	CONT.	SIZE	COMMENTS
17	BS	Picea pungens 'Bakeri'	Blue Spruce	B & B	8' ht., 4' spd., 2" cal.	Well Branched
12	WKH	Crataegus viridis 'Winter King'	Winter King Hawthorn	B & B	10' ht., 6' spd., 2" cal.	Full, well branched
11	TM	Thuja x plicata 'Green Giant'	Green Giant Arborvitae	B&B	8' ht., 4' spd., 2" cal.	Multi-Stem
10	RB	Cercis canadensis 'Rising Sun'	Redbud	B & B	10' ht., 6' spd., 2" cal.	Multi-Stem
49	AE	Ulmus parvifolia 'Emer II'	Allee Elm	B & B	14' ht., 6' spd., 3" cal.	Full, well branched
Note: All trees in lawn areas to receive a 3' dia circle of shredded cedar mulch to a depth of 3"						

SHRUBS					
BOTANICAL NAME	COMMON NAME	CONT.	SIZE/SPACE	COMMENTS	
Euonymus alatus 'Fireball'	Burning Bush	5 gal.	36" ht., 24" spd.	Well Branched	
Ilex vomitoria 'Nana'	Dwarf Yaupon Holly	3 gal.	24" ht., 24" spd.	Well Branched	
Buxus microphylla 'Wintergreen'	Wintergreen Boxwood	5 gal.	36" ht., 24" spd.	Full	
Miscanthus sinensis 'Zebra'	Zebra Grass	5 gal.	30" ht., 24" spd.	Full	
Pennisetum alopecuroides 'Hamelin'	Dwarf Fountain Grass	1 gal.	12" ht., 8" spd.	Full pot	
Yucca filamentosa 'Bright Edge'	Variegated Yucca	1 gal.	12" ht., 12" spd.	Full pot	
Miscanthus sinensis 'Zebra'	Zebra Grass	5 gal.	30" ht., 24" spd.	Full pot	
Seasonal Color	Seasonal Color	4" pot	varies	LA to approve	
Cynodon dactylon	Bermuda Grass			weed free	

LANDSCAPE REQUIREMENTS
Required - Street Trees at 30' O.C.
Provided - 49 Allee Elms at 30' O.C.

Required - 1 Tree / 5,000 sf Open Space
48,580 sf Open Space / 5,000 sf = 9.6 Trees Required
50 Trees Provided

Required - 2 Shrubs / 5,000 sf Open Space
48,580 sf Open Space / 5,000 sf = 19.2 Shrubs Required
2,187 Shrubs Provided*



SGN+A
Planning • Architecture
Landscape Architecture
SGN+A, Inc.
315 West Ponce de Leon Avenue
Suite 755
Decatur, Georgia 30030
Tel: 404.373.7370
www.sgnplusa.com

Revisions:	
Date:	Description:

Landscape Documents

Downtown Lee's Summit

A Residential Development by
Cityscape
Residential

This drawing as an instrument of services, is and shall remain the property of SGN+A and shall not be reproduced, published or used in any way without permission of SGN+A, Inc.

Sheet Title:
Code Compliance
Landscape Plan

Date:
December 13, 2018

Sheet Number:

L1

Not Released for Construction