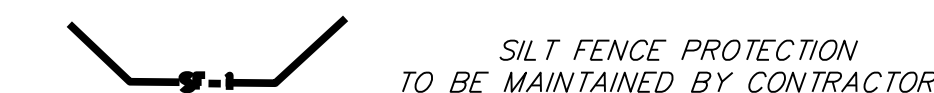
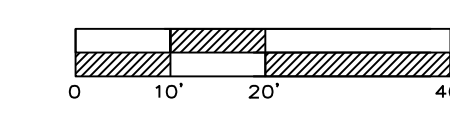


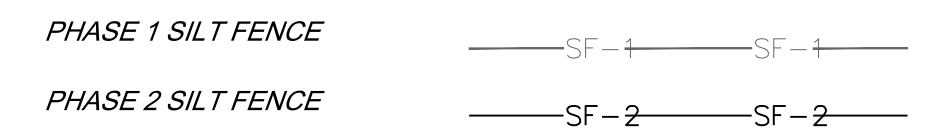


INACTIVE AREA STABILIZATION PLAN

SCALE: 1" = 20'



LEGEND



MAINTENANCE:
 TO MAINTAIN THE EROSION AND SEDIMENT CONTROLS, THE FOLLOWING PROCEDURES WILL BE PERFORMED:
SEDIMENT CAPTURE DEVICES: SEDIMENT WILL BE REMOVED FROM THE UPSTREAM OR UPSLOPE SIDE OF THE FILTER FABRIC FENCES, WHEN THE DEPTH OF ACCUMULATED SEDIMENT REACHES ABOUT ONE-THIRD THE HEIGHT OF THE STRUCTURE.
STORM SEWER INLETS: ANY SEDIMENT IN THE STORM SEWER INLETS WILL BE REMOVED AND DISPOSED OF PROPERLY.
TEMPORARY CONTROLS: ALL TEMPORARY CONTROLS WILL BE REMOVED AFTER THE DISTURBED AREAS HAVE BEEN STABILIZED.
 REMOVED SEDIMENT TRAP ONCE SITE GRADING HAS BEEN COMPLETED AND STORM DEVICES HAVE BEEN INSTALLED.

INSPECTION PROCEDURES:
 INSPECTIONS WILL BE DONE BY THE RESPONSIBLE PERSON(S) AT LEAST ONCE EVERY WEEK AND WITHIN 24 HOURS EACH STORM EVENT PRODUCING ANY AMOUNT OF RAINFALL. AREAS THAT HAVE BEEN RESEEDED WILL BE INSPECTED REGULARLY AFTER SEED GERMINATION TO ENSURE COMPLETE COVERAGE OF EXPOSED AREAS. DISTURBED AREAS THAT HAVE NOT BEEN FINALLY STABILIZED SHALL HAVE ALL POLLUTION CONTROL MEASURES INSPECTED FOR PROPER INSTALLATION, OPERATION AND MAINTENANCE. LOCATIONS WHERE STORM WATER LEAVES THE SITE SHALL BE INSPECTED FOR EVIDENCE OF EROSION OR SEDIMENT DEPOSITION. ANY DEFICIENCIES SHALL BE NOTED IN A REPORT OF THE INSPECTION AND CORRECTED WITHIN SEVEN CALENDAR DAYS OF THE INSPECTION. THE PERMITTEE SHALL PROMPTLY NOTIFY THE SITE CONTRACTORS RESPONSIBLE FOR OPERATION AND MAINTENANCE OF POLLUTION CONTROL DEVICES OF DEFICIENCIES.

IF THE EXISTING GROUND COVER IS NATURAL GRASS, DISTURBED AREAS SHALL BE TEMPORARILY SEEDDED WITH WHEAT/RYE AT A RATE OF 1.5 POUNDS PER 1000 SQUARE FEET. PERMANENT SEEDING SHALL CONSIST OF 80% IN THREE EQUAL PARTS OF THIN BLADE, TURF-TYPE, TALL FESCUE AND 10% BLUEGRASS SEED AT A RATE OF 10 POUNDS PER 1000 SQUARE FEET. BOTH TEMPORARY AND PERMANENT SEEDED AREAS SHALL BE MULCHED AND WATERED TO MAINTAIN THE PROPER MOISTURE LEVEL OF THE SOIL TO ESTABLISH GRASS. NEW GRASS SHALL BE WATERED AND MAINTAINED UNTIL IT REACHES A HEIGHT OF 3 INCHES. ANY BARE AREAS SHALL BE RESEEDED.

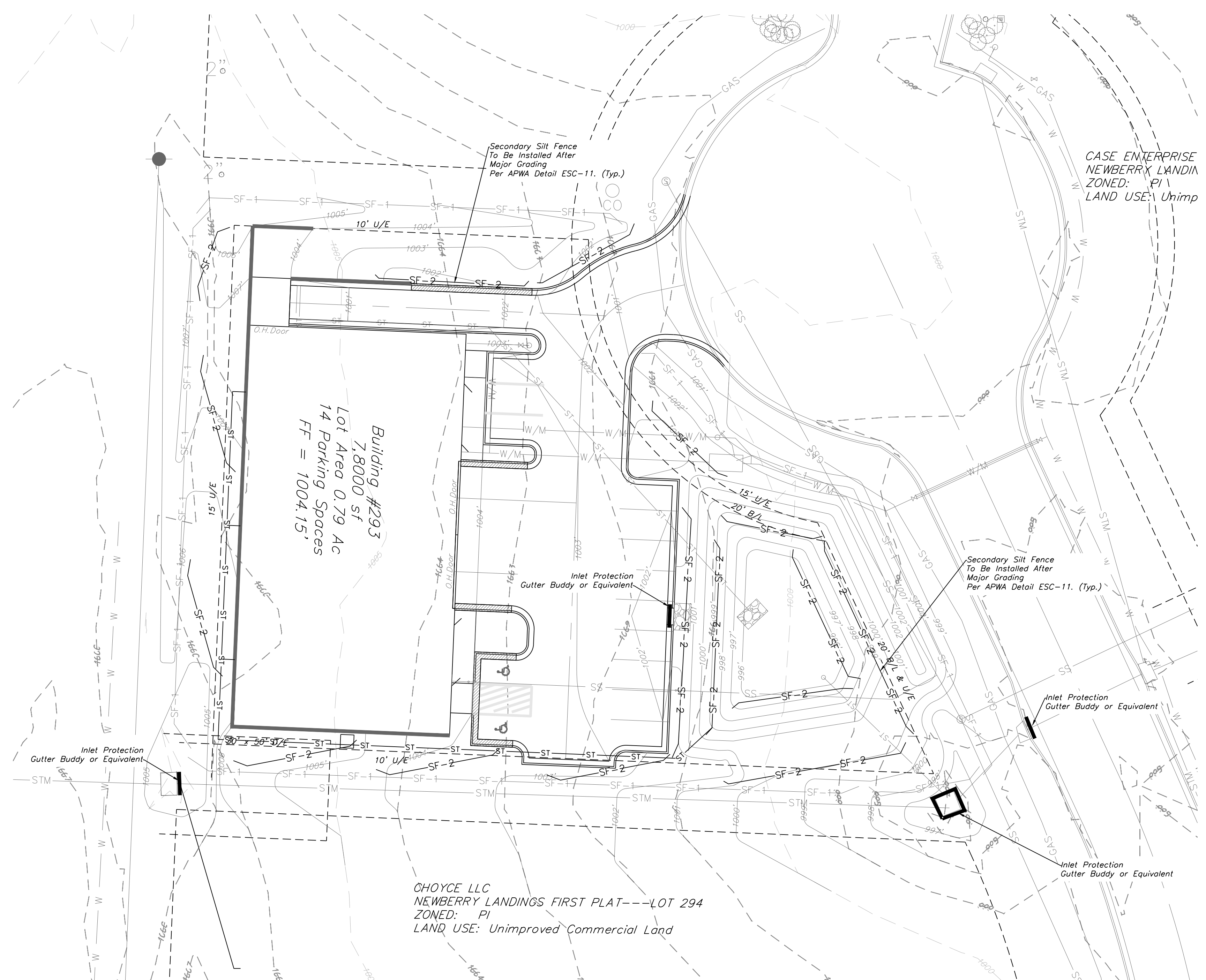
ALL EROSION CONTROL DEVICES SHALL BE REMOVED BY GENERAL CONTRACTOR AFTER SITE STABILIZATION IS COMPLETE AND APPROVED BY ENGINEER.

THE DEVELOPER WILL DESIGNATE A QUALIFIED PERSON OR PERSONS TO PERFORM THE FOLLOWING INSPECTIONS:
STABILIZATION MEASURES: DISTURBED AREAS AND AREAS USED FOR STORAGE OF MATERIALS THAT ARE EXPOSED TO PRECIPITATION WILL BE INSPECTED FOR EVIDENCE OF, OR THE POTENTIAL FOR, POLLUTANTS ENTERING THE DRAINAGE SYSTEM. AFTER A PORTION OF THE SITE IS FINALLY STABILIZED, INSPECTIONS WILL BE CONDUCTED AT LEAST ONCE EVERY MONTH THROUGHOUT THE LIFE OF THE PROJECT. CONTRACTOR CAN CONTACT ENGINEERING SOLUTIONS FOR COPIES OF THE INSPECTION FORM TO BE USED FOR STABILIZATION MEASURES.
STRUCTURAL CONTROLS: FILTER FABRIC FENCES AND ALL OTHER EROSION AND SEDIMENT CONTROL MEASURES IDENTIFIED IN THE PLAN WILL BE INSPECTED REGULARLY FOR PROPER POSITIONING, ANCHORING, AND EFFECTIVENESS IN TRAPPING SEDIMENTS. SEDIMENT WILL BE REMOVED FROM THE UPSTREAM OR UPSLOPE SIDE OF THE FILTER FABRIC. CONTRACTOR CAN CONTACT ENGINEERING SOLUTIONS FOR COPIES OF THE INSPECTION FORM TO BE USED FOR STABILIZATION MEASURES.
DISCHARGE POINTS: DISCHARGE POINTS OR LOCATIONS WILL BE INSPECTED TO DETERMINE WHETHER EROSION CONTROL MEASURES ARE EFFECTIVE IN PREVENTING SIGNIFICANT AMOUNTS OF POLLUTANTS FROM ENTERING RECEIVING WATERS.
CONSTRUCTION ENTRANCE: LOCATIONS WHERE VEHICLES ENTER OR EXIT THE SITE WILL BE INSPECTED FOR EVIDENCE OF OFF-SITE SEDIMENT TRACKING.

A LOG OF EACH INSPECTION SHALL BE KEPT. THE INSPECTION REPORT IS TO INCLUDE THE FOLLOWING MINIMUM INFORMATION: INSPECTOR'S NAME, DATE OF INSPECTION, OBSERVATIONS RELATIVE TO THE EFFECTIVENESS OF THE POLLUTION CONTROL DEVICES, ACTIONS TAKEN OR NECESSARY TO CORRECT DEFICIENCIES, AND LISTING OF AREAS WHERE LAND DISTURBANCE OPERATIONS HAVE PERMANENTLY OR TEMPORARILY STOPPED. THE INSPECTION REPORT SHALL BE SIGNED BY THE PERMITTEE OR BY THE PERSON PERFORMING THE INSPECTION IF DULY AUTHORIZED TO DO SO.

DURING ALL PHASES OF CONSTRUCTION, INACTIVE AREA STABILIZATION METHODS AS DESCRIBED IN APWA SECTION 5111.3 SHALL BE USED TO CONTROL EROSION AND SILTATION.

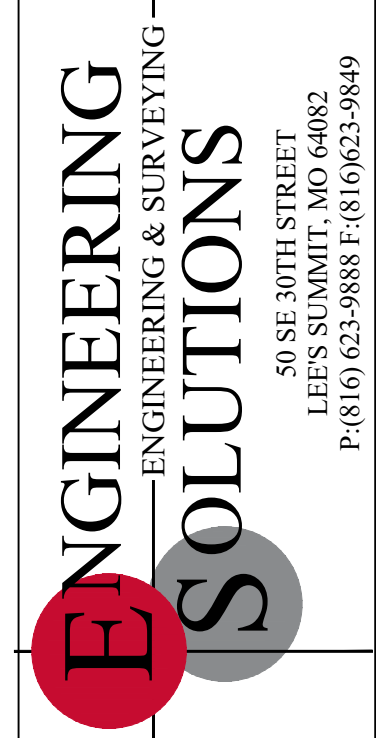
NOTES: The Land Disturbance Plans indicates the final placement of erosion control devices. The contractor(s) may proceed with construction prior to the final placement of these devices by providing additional devices to control erosion on their items of work. These devices shall be maintained until the final devices are in place.



CASE ENTERPRISE
 NEWBERRY LANDINGS
 ZONED: P1
 LAND USE: Unimp

Building #293
 Lot Area 0.79 Ac
 14 Parking Spaces
 FF = 1004.15'

CHOYCE LLC
 NEWBERRY LANDINGS FIRST PLAT---LOT 294
 ZONED: P1
 LAND USE: Unimproved Commercial Land

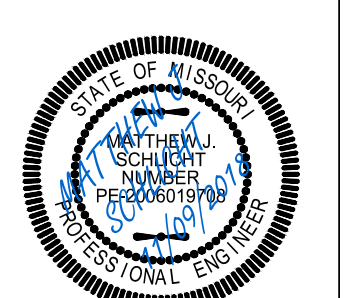


Professional Registration
 Missouri
 Engineering 200502188-D
 Surveying 200508189-D
 Kansas
 Engineering E-1695
 Surveying LS-218
 Oklahoma
 Engineering 6254
 Nebraska
 Engineering CA2821

Newberry Landings First Plat
 Lee's Summit, Jackson County, Missouri

Project:
 NEWBERRY
 LANDINGS, LSNMO
 Issue Date:
 March 12, 2018

ESC PHASE 2 PLAN
 Construction Plans for:
 Lot 293, Newberry Landings First Plat
 Lee's Summit, Jackson County, Missouri



Matthew J. Schlicht
 MO PE 2006019708
 KS PE 19071
 OK PE 25226

REVISIONS
REV 10-04-18
REV 10-25-18
REV 11-09-18