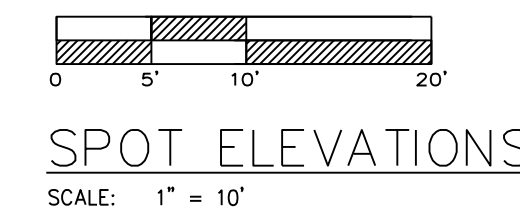
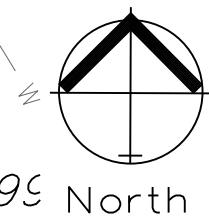
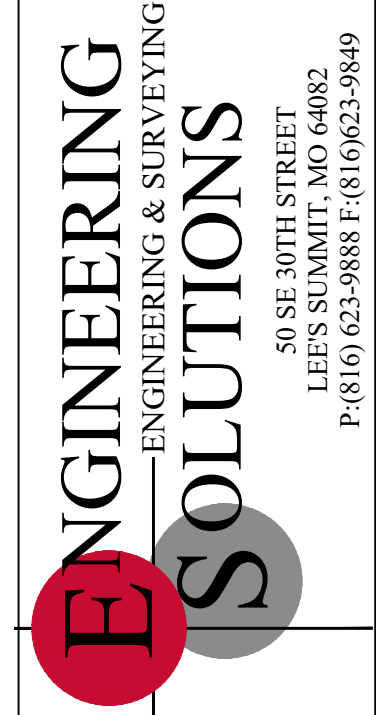


FL Out (SE)=992.20' 18" HDPE



TC 99 North
TC 999.53



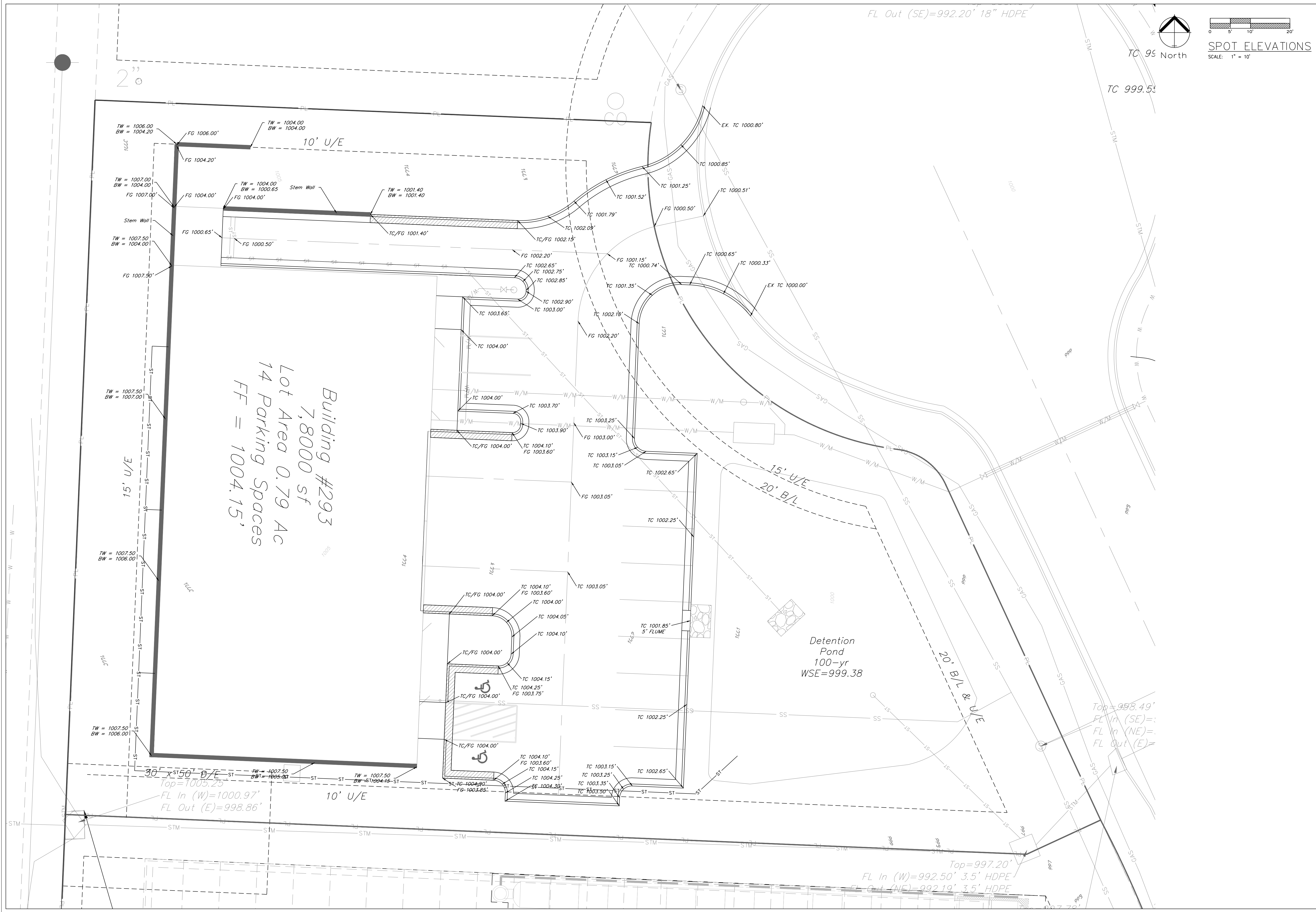
Professional Registration
Missouri
Engineering 200502188-D
Surveying 20050319-D
Kansas
Engineering E-1695
Surveying LS-218
Oklahoma
Engineering 6254
Nebraska
Engineering CA2821

Newberry Landings First Plat
Lee's Summit, Jackson County, Missouri

Project:
NEWBERRY
LANDINGS, LSNMO
Issue Date:
March 12, 2018

SPOT ELEVATIONS
Construction Plans for:
Lot 293, Newberry Landings First Plat
Lee's Summit, Jackson County, Missouri

Matthew J. Schlicht
MO PE 2006019708
KS PE 19071
OK PE 25226
REVISIONS
REV 10-04-18
REV 10-25-18
REV 11-09-18



Building #293
7,800 sf
14 Parking Spaces
FF = 1004.15'

Detention Pond
100-yr
WSE=999.38

Top=998.49'
FL In (SE)=:
FL In (NE)=:
FL Out (E)=:

90' x 50' D/E
Top=1005.25
FL In (W)=1000.97'
FL Out (E)=998.86'

Top=997.20'
FL In (W)=992.50' 3.5' HDPE
FL Out (NE)=992.19' 3.5' HDPE