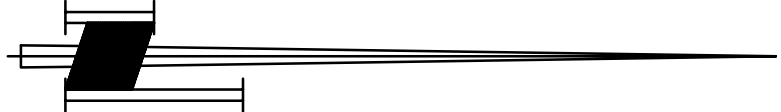
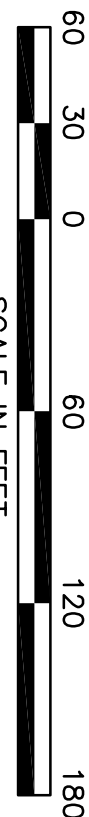


MINOR PLAT OF  
**WEST VILLAGE COMMERCIAL DEVELOPMENT**  
A MINOR SUBDIVISION IN THE EAST 1/2 OF SECTION 2, TOWNSHIP 47 NORTH, RANGE 32 WEST,  
LEE'S SUMMIT, JACKSON COUNTY, MISSOURI



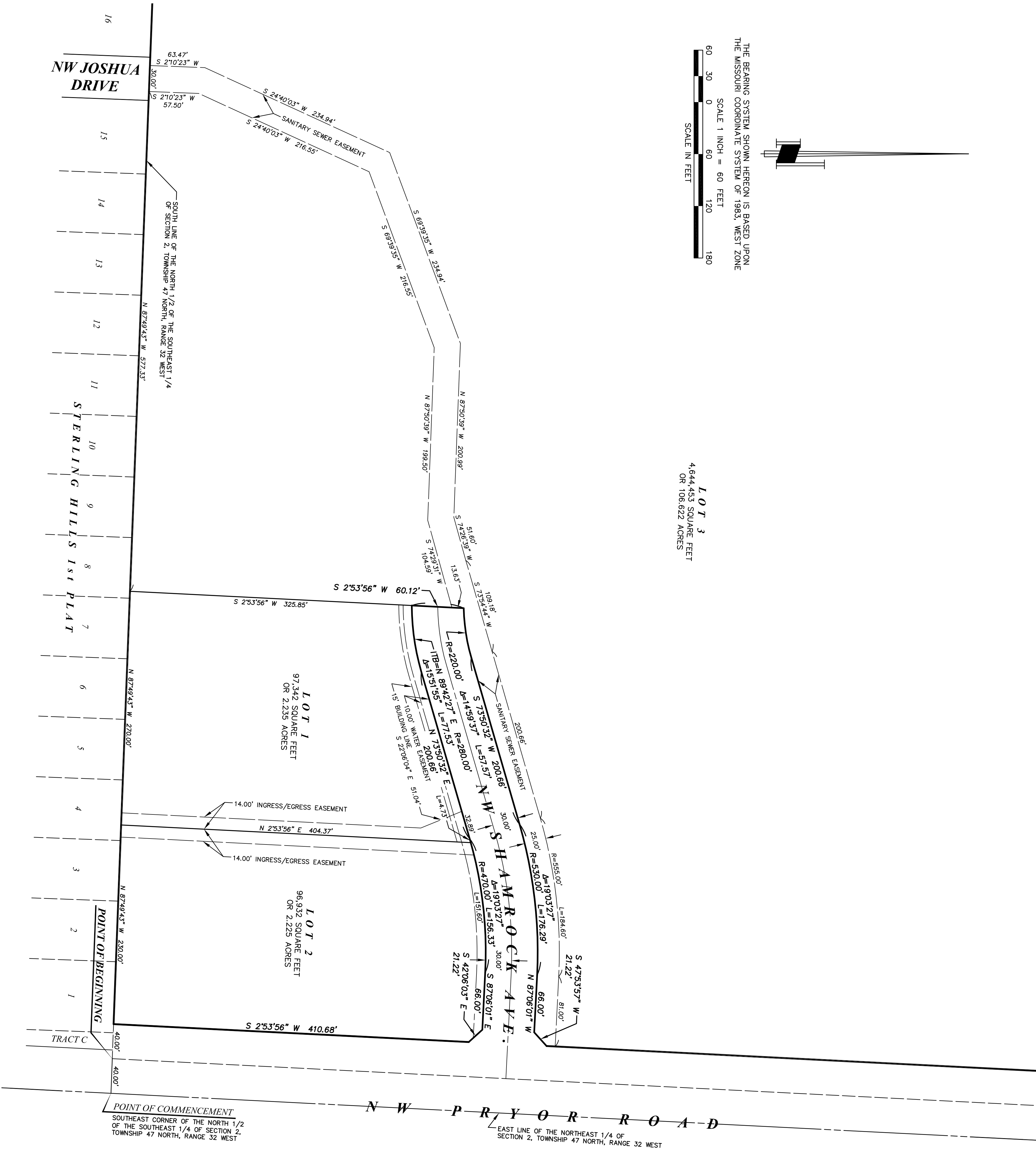
THE BEARING SYSTEM SHOWN HEREON IS BASED UPON  
THE MISSOURI COORDINATE SYSTEM OF 1983, WEST ZONE

SCALE 1 INCH = 60 FEET



SCALE IN FEET

**LOT 3**  
4,644.453 SQUARE FEET  
OR 106.622 ACRES



**APPROVED:**  
THIS IS TO CERTIFY THAT THE MINOR PLAT OF "WEST VILLAGE  
COMMERCIAL DEVELOPMENT" WAS SUBMITTED TO AND DULY APPROVED  
BY THE CITY OF LEE'S SUMMIT, PURSUANT TO THE UNITED DEVELOPMENT  
ORDINANCE NO. 5209:

GEORGE M. BINGER III, P.E.  
CITY ENGINEER

DATE

ROBERT G. MCKAY  
DIRECTOR OF PLANNING &  
CODES ADMINISTRATION

DATE

DENISE R. CHISUM, MMC  
CITY CLERK

DATE

JACKSON COUNTY ASSESSOR  
GIS DEPARTMENT

DATE

SHEET 2 OF 2

**MINOR PLAT**

I HEREBY CERTIFY THAT THIS PLAT OF "WEST VILLAGE COMMERCIAL DEVELOPMENT" IS  
BASED UPON AN ACTIVE SURVEY MADE BY ME OR UNDER MY DIRECT SUPERVISION, AND  
IS IN ACCORDANCE WITH THE CURRENT STANDARDS FOR PROPERTY BOUNDARY SURVEYS,  
AS ESTABLISHED BY THE MISSOURI BOARD FOR ARCHITECTS, PROFESSIONAL ENGINEERS,  
PROFESSIONAL LAND SURVEYORS, AND LANDSCAPE ARCHITECTS, AND ALSO THAT SAID  
SURVEY MEETS OR EXCEEDS THE ACCURACY STANDARDS FOR A CLASS URBAN SURVEY.

DATE: DECEMBER 11, 2017  
FOR: **CITY OF LEE'S SUMMIT**  
220 SE GREEN STREET  
LEE'S SUMMIT, MISSOURI 64063  
ATTN.: DENA MEZGER

PROJECT LOCATION:

LEE'S SUMMIT  
JACKSON COUNTY  
MISSOURI



203 N. W. EXECUTIVE WAY  
LEE'S SUMMIT, MISSOURI 64063  
(816) 246-5050

MISSOURI STATE CERTIFICATE OF AUTHORITY, 000076

JAMES S. ANDERSON,  
PLS #1726