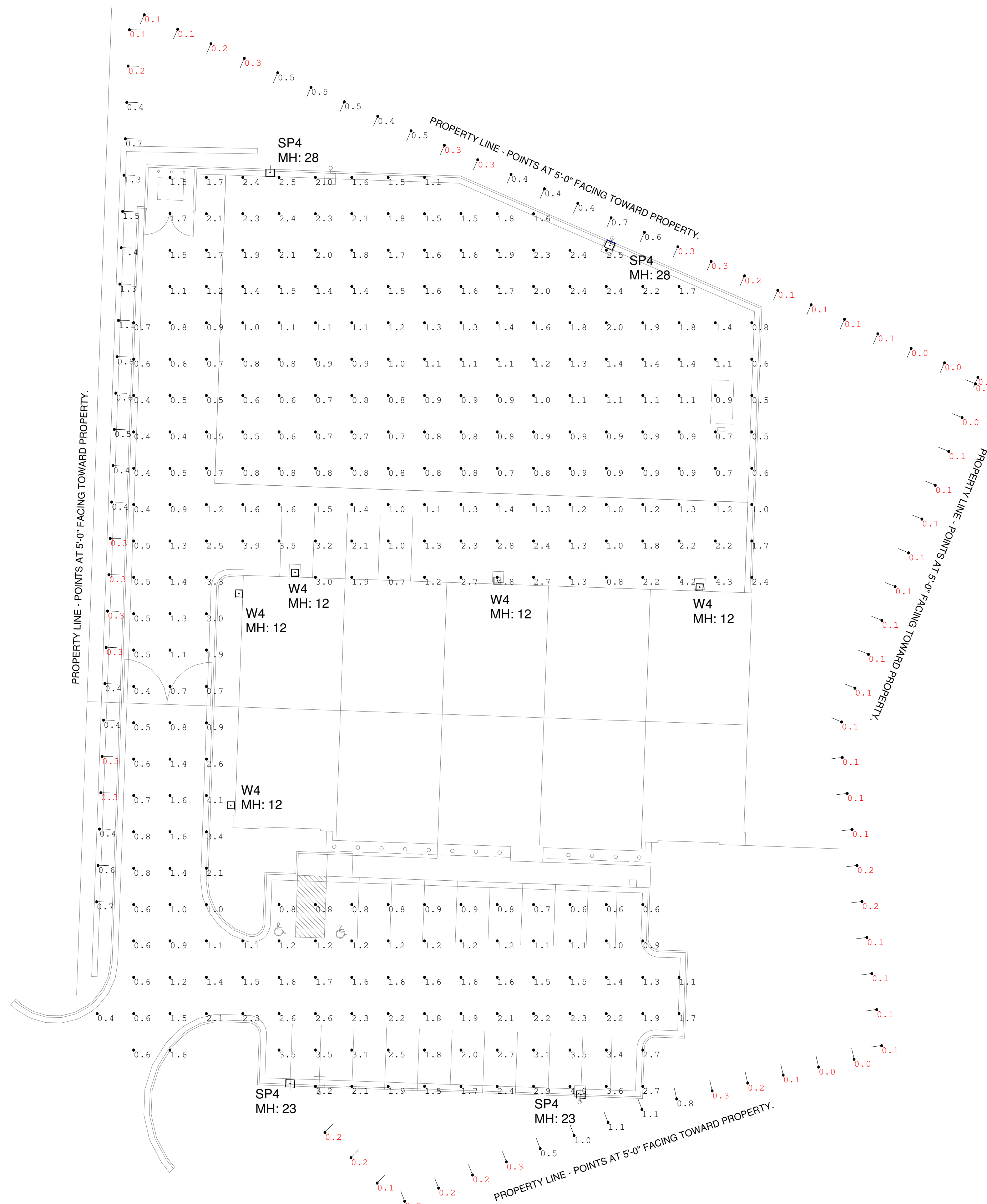


# SITE LIGHTING PHOTOMETRIC PLAN



Calculation Summary							
Label	CalcType	Units	Avg	Max	Min	Avg/Min	Max/Min
Property Line	Illuminance	Fc	0.35	1.5	0.0	N.A.	N.A.
Site Lighting	Illuminance	Fc	1.47	4.8	0.4	3.68	12.00

Luminaire Schedule						
Tag	Description	Lum. Lumens	LLD	LDD	LLF	Lum. Watts
W4	D444-LED-40-40-UNV-T4	4339	0.900	0.950	0.855	40
SP4	D824-LED-120-40-UNV-LP-T4	14072	0.900	0.950	0.855	113.9

Client: \_\_\_\_\_ Order #: \_\_\_\_\_  
Project Name: \_\_\_\_\_ Type: \_\_\_\_\_ Qty: \_\_\_\_\_

## GLADETINO D824-LED

Low Profile Gladestino Luminaire

**Performance Data**

CRI: 70+, 95 Optional

CCT: 3000K, 3500K, 4000K, 5000K, Amber

Projected Lifetime: 285,000 Hours (L70), 181,000 Hours (L80)

Dimming: 0-10V Dimming Standard, 10% to 100%

Operating Temperature: -40°C to +55°C Ambient

IP Rating: IP67

**ETL** **DSKY** **DLC** **10 Yr** **USA**

Dark Sky Compliant | Listed | Listed | Warranty: 10 Year | Buy American Act Compliant

**Description:** Style combined with elegance. The Gladestino luminaire provides an aesthetically pleasing addition to any roadway or parking lot with its smooth, defined curves and highly functional optics that provide maximum lumen output while ensuring beam uniformity. The combination of form and function blend together to make Gladestino the premier outdoor lighting fixture. Dark Sky compliant when ordered at 3000K color temperature.

**Features:**

- Spun-aluminum top is finished in polyester powder coat.
- Die cast aluminum housing and front frame, integral heat sinking and driver compartment.
- Powder coat finish over a chromatic conversion coating.
- 8 mounting brackets available, including the new adjustable wall mount.
- Weight: 15lb; EPA: 0.60A\*
- Available with rotated optics for horizontal throw (View pg 2)
- Type V Wide, and 15' flood optics coming soon.
- 0-10V Dimming Standard on all models.
- DLC Listed for Utility Rebates (Please view DLC matrix on pg 8)
- ETL Listed for Wet Locations.
- Dark Sky compliant when ordered at 3000K color temperature.
- 3G Vibration Tested for Roadways.
- PhotoCell receptacle included standard.

## D824-LED LP

**Ordering Information**

FIXTURE SERIES	VOLTAGE	MOUNTING	OPTIONS
D824-LED Gladestino Area Luminaire	UNV 120/277V 347 347V 480 480V	PM Pole Mount WB Wall Bracket RPM Round Pole Mount Adapter* LHM Heavy Duty Large Yoke Mount LM Low Profile SF Slip Fit*	PC Photocell (Twist Lock) MS Motion Sensor (with Dimming)** 95 95 CRI GS Glare Shield / House Side Shield 7P NEMA 7-Pin Receptacle** 7R NEMA 7-Pin Receptacle & Photocell** D4 Stand-Alone Synchronized Dimming R Rotated Right Optics* L Rotated Left Optics*
WATTAGE/LUMENS	BODY TYPE	OPTICS	FINISH
20 20W/3120** 30 30W/3960** 40 40W/5280** 60 60W/7520** 80 80W/10400** 100 100W/14130** 120 120W/15380** 150 150W/17920**	LP Low Profile	T2 Type II T3 Type III T4 Type IV T4A Front Row T5 Type V 40 40° Narrow Flood 55 55° Medium Flood 70 70° Wide Flood	BZ Bronze BL Black WH White SL Silver CU Custom*
CCT	30 3000K 35 3500K 40 4000K 50 5000K A Amber		

\*Standard for future  
\*\*Contact factory for custom finish  
\*\*\*Delivered Lumens (5000K Type II)  
\*\*\*\*Standard Color Temp.

## TYPE SP4 SPECIFICATION SHEET

Client: \_\_\_\_\_ Order #: \_\_\_\_\_  
Project Name: \_\_\_\_\_ Type: \_\_\_\_\_ Qty: \_\_\_\_\_

## D444-LED

Medium Trapezoidal Wall Pack

**Performance Data**

CRI: 70+ (5000K), 80+ (4000K and lower)

CCT: 3000K, 3500K, 4000K, 5000K

Projected Lifetime: L70 - 196,000 Hours, L80 - 122,000 Hours

Dimming: 0-10V dimming standard, 100% down to 10%

Operating Temperature: -40°C to +55°C Ambient

UL Listed  
Suitable for dry, damp, wet locations

**DSKY** **DLC** **UL** **10 Yr** **USA**

Dark Sky Compliant | Listed | Listed | Warranty: 10 Year | Buy American Act Compliant

**Description:** The D444-LED medium trapezoidal cutoff wall pack offers a sleek design and cutoff performance with a wide range of uses. It delivers the lighting needed for the exterior of retail buildings, businesses, walkways, underpasses or door entrances. Delivering up to 141 lumens per watt of high efficacy performance, the D444-LED is also Dark Sky compliant when ordered at 3000K.

**Features:**

- Heavy duty two piece, die-cast aluminum housing.
- Silicone gasketing provides protection against moisture.
- Mounts directly to 5/8" octagon, or 4" square outlet box.
- 5" NPS tapped holes provided in three locations for surface conduit entry for optional photocell control.
- Dark bronze powder coated finish for impact, corrosion and UV resistance.
- Integral cast-in aluminum hinges.
- Dark Sky compliant when ordered at 3000K.
- DLC Premium listed for utility rebates (see Page 3 for more info).
- Can be used as an uplight for wall washing applications.
- Driver is fully accessible from below the ceiling or wall. Driver is wired for dimming or non-dimming.
- Precision-designed polycarbonate optical lenses control and deliver light only where it is needed.

**Ordering Information**

FIXTURE SERIES	VOLTAGE	OPTIONS
D444-LED Medium Trapezoidal Cutoff Wall Pack	UNV 120-277V 347 347V 480 480V (Step-Down Transformer used for 480V Diodes)	PC Photocell EM Emergency Backup MS Motion Sensor w/ Dimming @SP-2117
WATTAGE/LUMENS	OPTICS	FINISH
20 20W/2524** 30 30W/3792** 40 40W/4824** 50 50W/6150** 80 80W/9760**	T2 Type 2 T3 Type 3 T4 Type 4	BZ Bronze* BL Black WH White CU Custom*
CCT	30 3000K 35 3500K 40 4000K 50 5000K	

\*8ft mounting height lens standard. Contact factory for higher mounting.  
\*\*DLC Listed wattage (see Page 4 for more information on models currently listed)

## TYPE W4 SPECIFICATION SHEET

#	Date	Comments

Revisions

Drawn By: TATE BETZ  
Checked By:  
Date: 8/3/2018

Scale: 1" = 4'-0"

INTERNATIONAL BUILDERS AND CONSULTANTS, INC  
LEE'S SUMMIT

PREMIER LIGHTING & CONTROLS  
401 SE FLEETWAY DR / LEE'S SUMMIT, MO 64081  
913-541-8239

Page M of 1