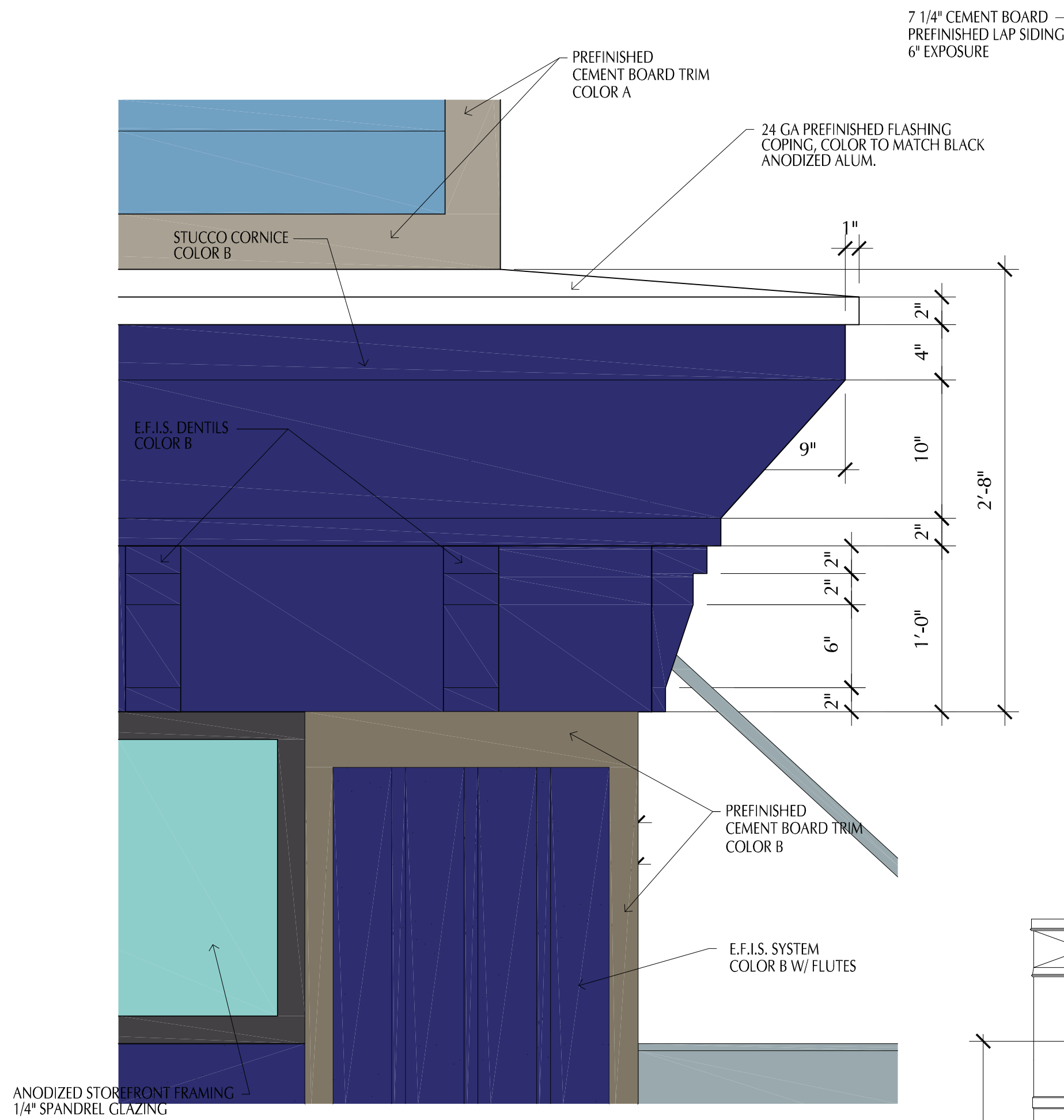
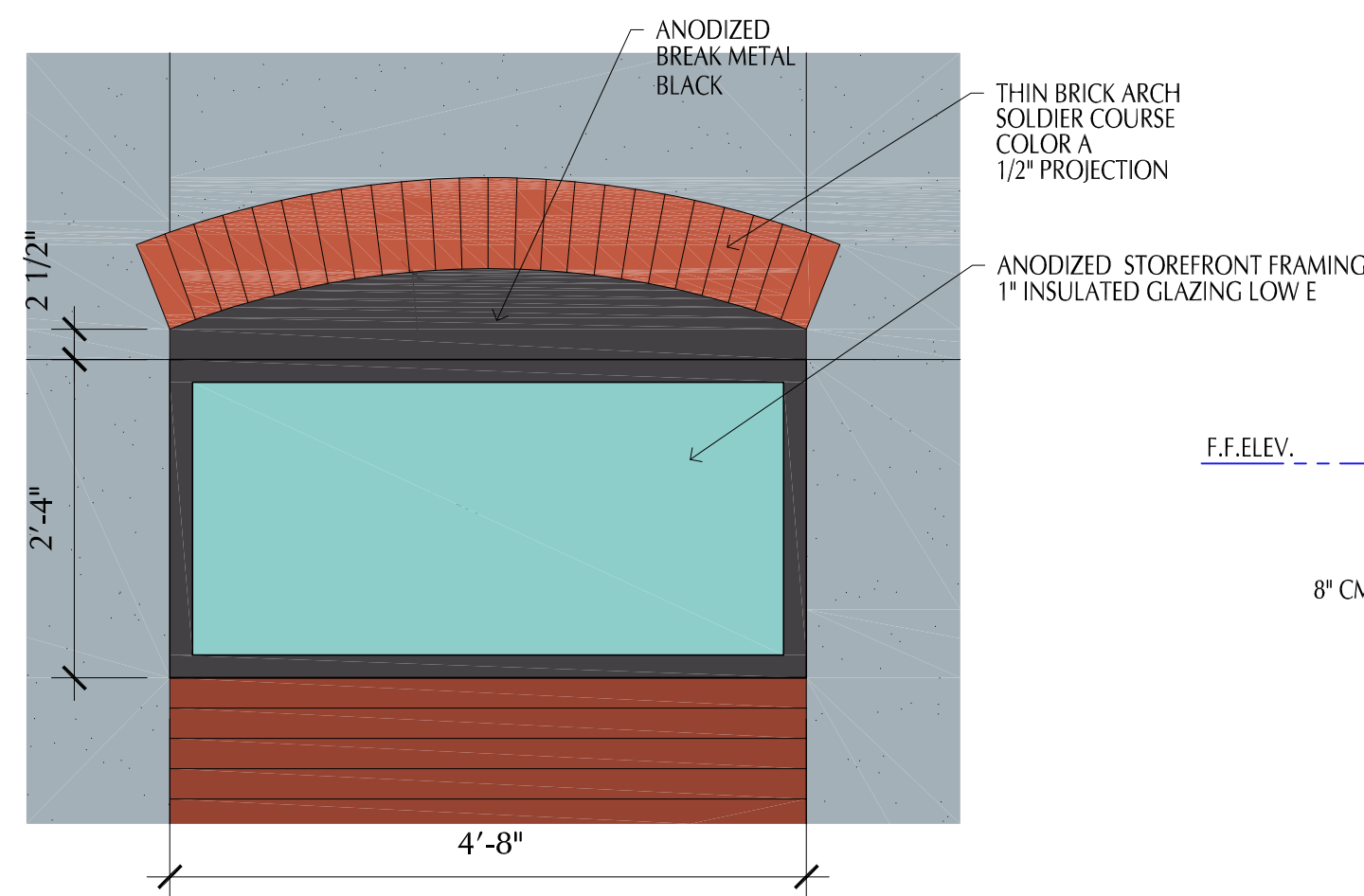


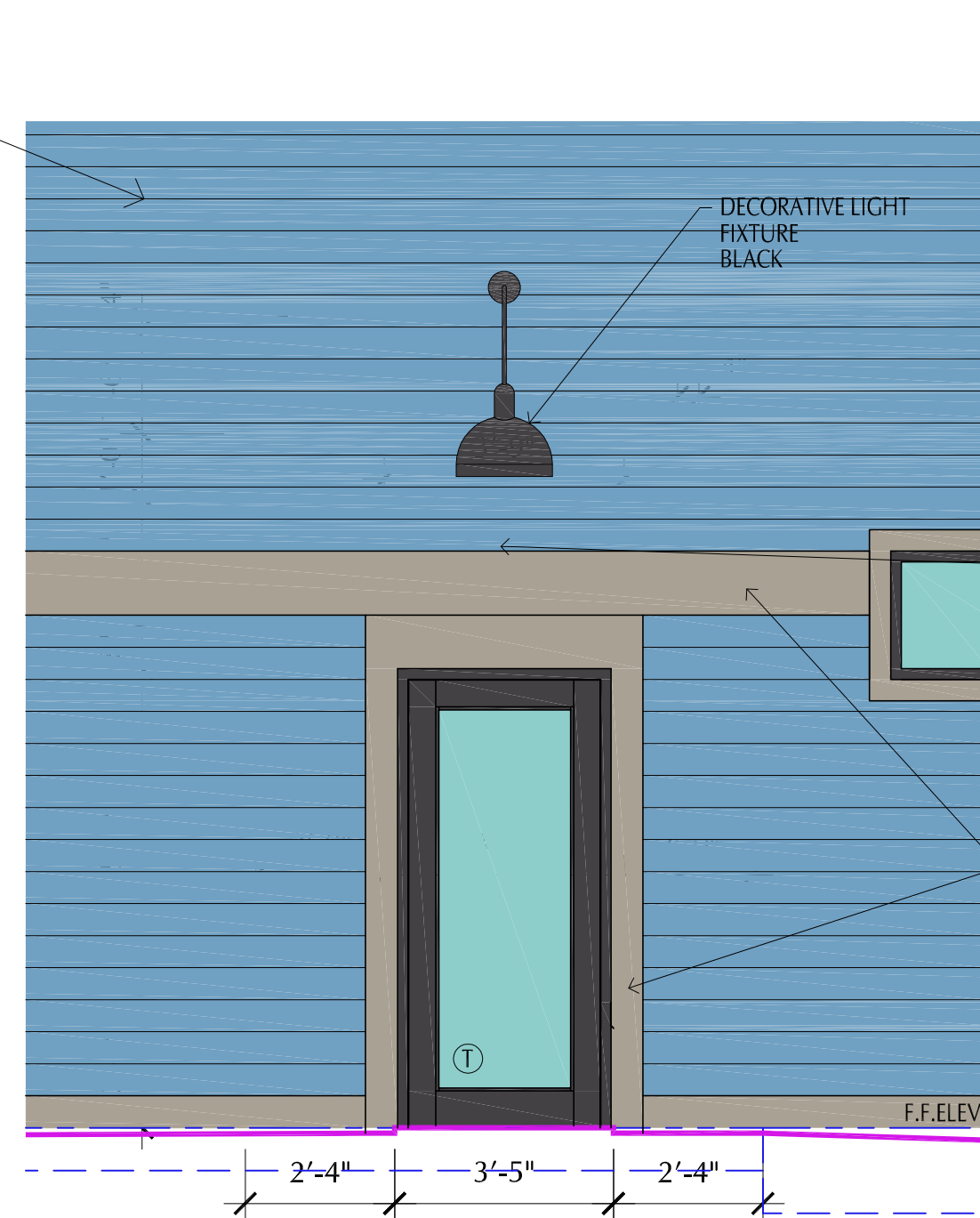
Aug 28, 2018 - 8:19am - USER chriss  
T:\Rose\Drawings-Current\18007 GoodVets Lee's Summit\Production\Planning & Zoning\Architectural\A3.3 COLOR BUILDING ELEVATIONS.dwg  
CONFIDENTIAL - PROPRIETARY: THE DOCUMENT IS THE PROPERTY OF ROSE DESIGN GROUP, INC. AND IS LOANED IN CONFIDENCE WITH THE UNDERSTANDING THAT IT IS NOT TO BE COPIED OR REPRODUCED WITHOUT THE EXPRESS WRITTEN PERMISSION OF, AND THAT NEITHER THE DOCUMENT NOR THE INFORMATION CONTAINED THEREIN WILL BE USED ADVISELY TO ASSIST ANOTHER GROUP, INC. ALL PATENT RIGHTS ARE RESERVED.



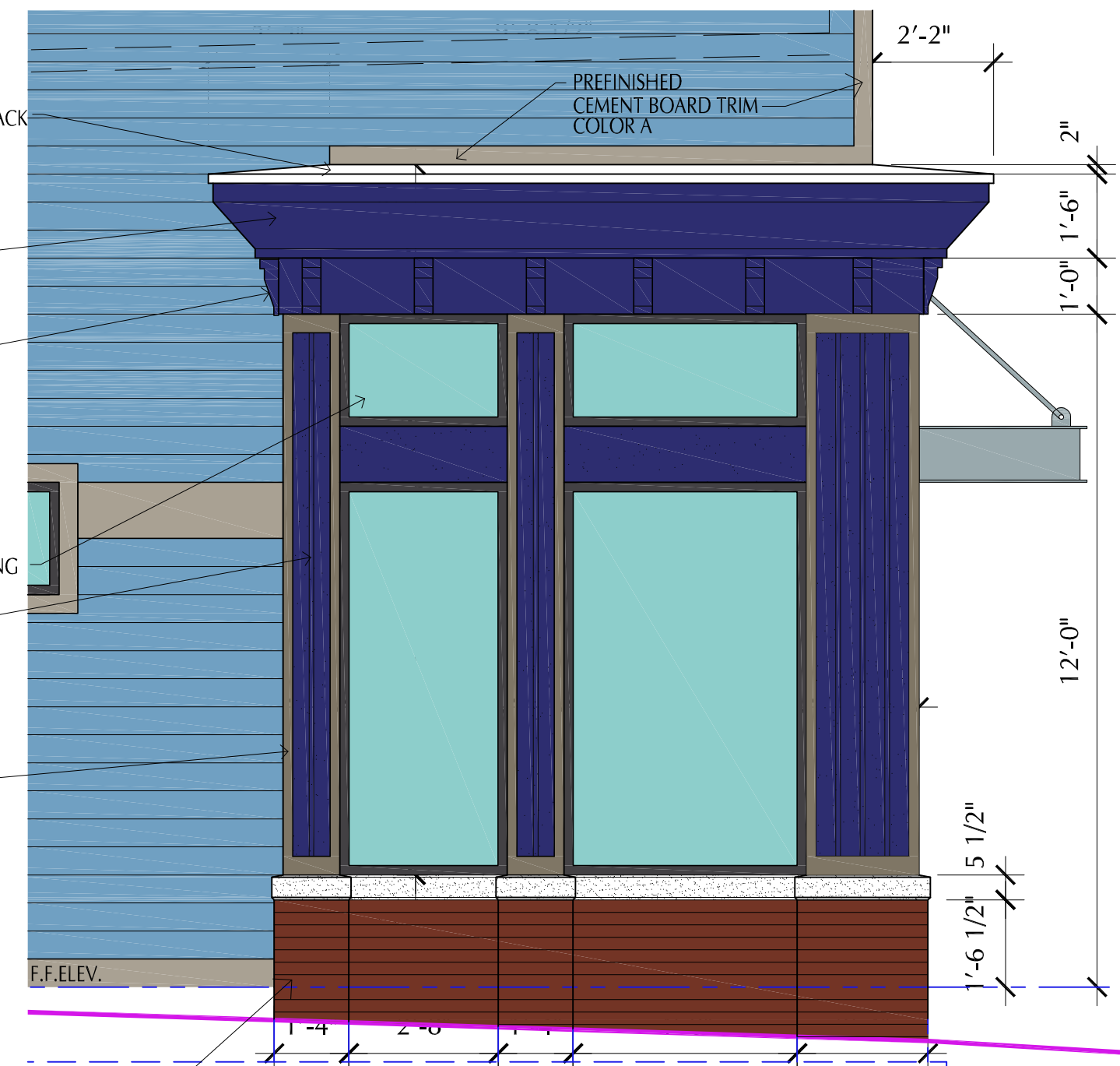
ENLARGED ELEVATION DETAIL 5  
Scale 1 1/2" = 1'-0"



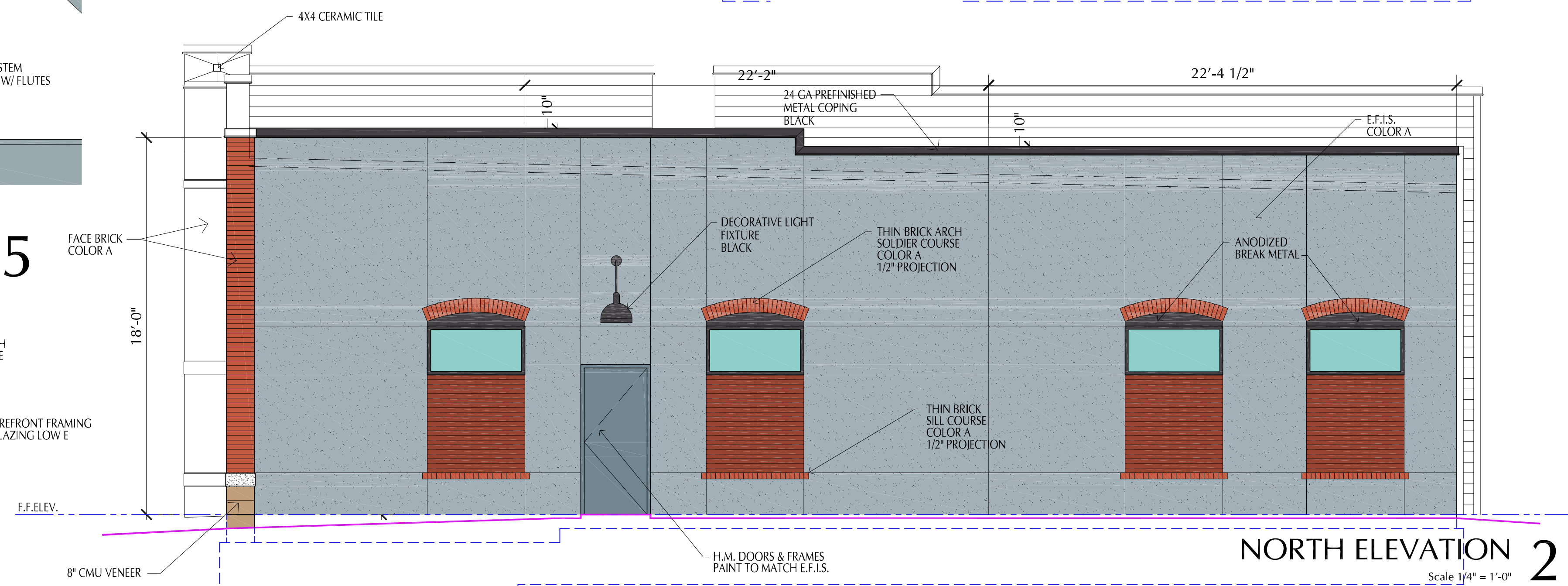
ENLARGED ELEVATION DETAIL 6  
Scale 3/4" = 1'-0"



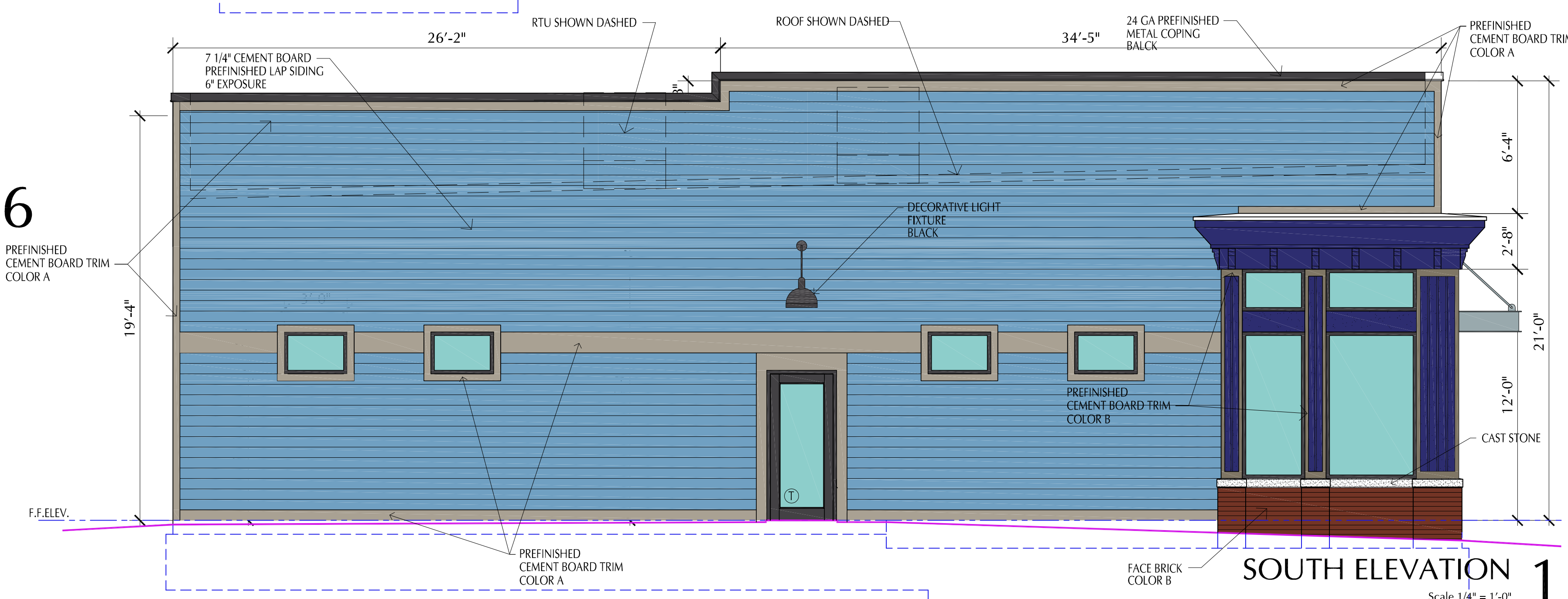
ENLARGED SOUTH ELEVATION 4  
Scale 3/8" = 1'-0"



ENLARGED SOUTH ELEVATION 3  
Scale 3/8" = 1'-0"



NORTH ELEVATION 2  
Scale 1/4" = 1'-0"



SOUTH ELEVATION 1  
Scale 1/4" = 1'-0"

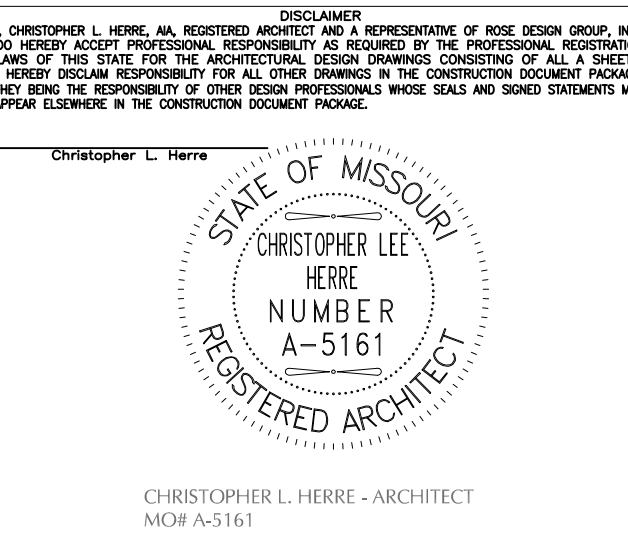
## PLAN NOTES

NOTE:  
ALL EXTERIOR DOORS & WINDOWS TO MEET AT A MIN.  
2012 ENERGY CODES

STOREFRONT DOOR TO HAVE  
U-FACTOR OF .77 & SHGC.40

STOREFRONT WINDOWS TO HAVE  
U-FACTOR OF .38 & SHGC.40

EXTERIOR H.M. DOORS TO BE INSULATED  
U-FACTOR OF .77



**ROSE  
DESIGN  
GROUP<sup>INC.</sup>**

ARCHITECTS ■ PLANNERS

A Division of Rose Design Build

913-782-0777 FAX: 913-782-0998  
P.O. BOX 100 OLATHE, KS 66051

MISSOURI STATE CERTIFICATE OF  
AUTHORITY # 2008034845 www.BuildWithRose.com



**PROPOSED BUILDING FOR:**  
**GOODVETS**  
**420 SW LONGVIEW BLVD**  
**LEE'S SUMMIT, JACKSON COUNTY, MO**

NO.	DESCRIPTION	DATE
1	CITY COMMENT REVISIONS	08-28-18

PROJECT NUMBER 18007  
DATE ISSUED: 07 / 11 / 18  
SHEET NUMBER

**A3.3**

BUILDING ELEVATIONS