

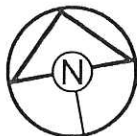
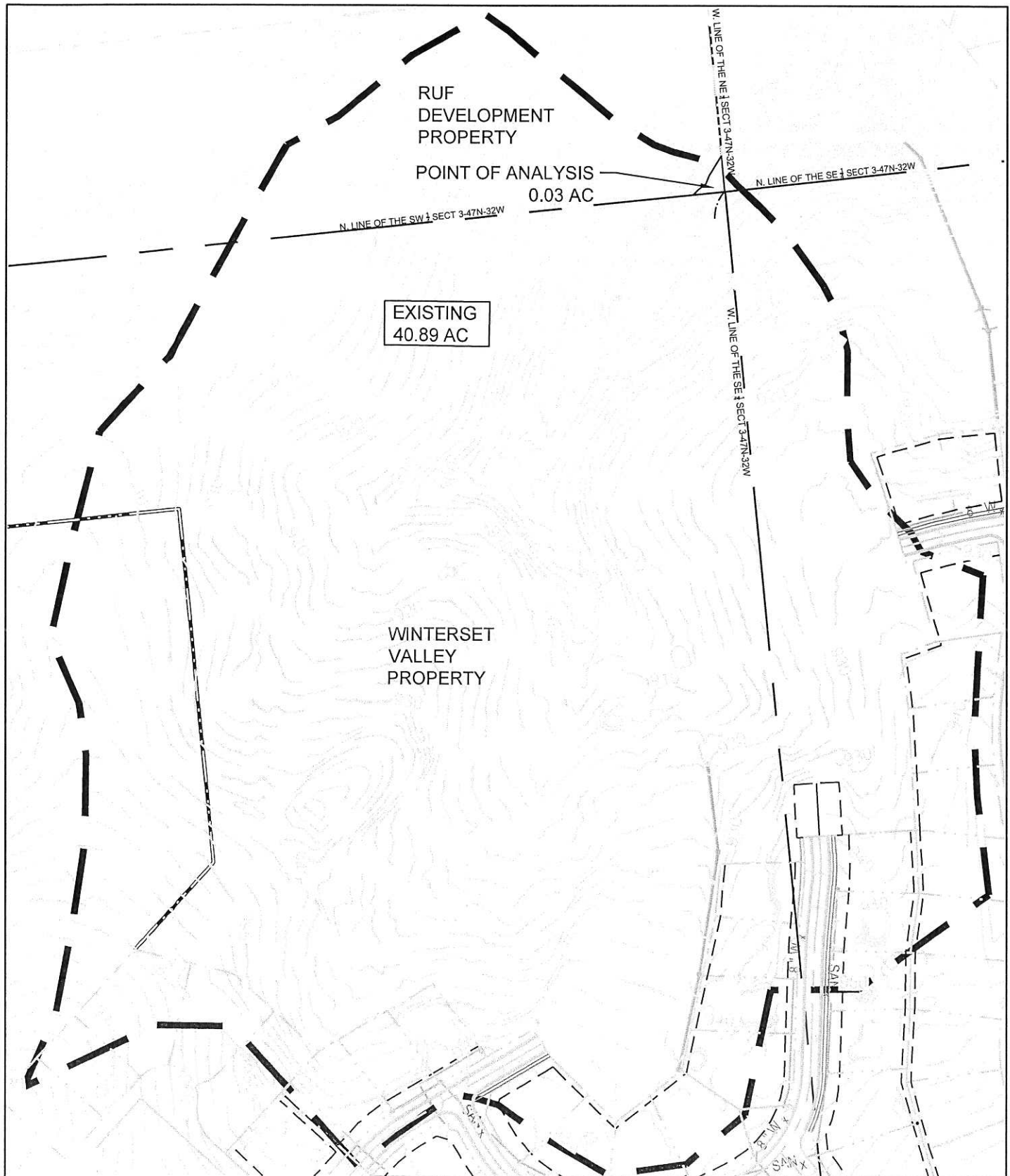
August 17, 2018

City of Lee's Summit  
220 SE Green St  
Lee's Summit MO 64063

Planning and Development Services

Per the attached exhibit, and as per the affected .03 acre located in the north-east corner of our property, this letter will certify that we are aware of the increase in runoff and potential flooding concerns associated with the Winterset Valley development, and that we release the City of Lee's Summit and Winterset Valley from any potential property damage associated with said flows."

	
Maureen Ruf	Travis Ruf
Ruf Development, Property	Ruf Development, Property
INC.	INC.
5/17/2018	8/17/2018
Date	Date



DRAWN BY:	KSC
CHECKED BY:	MAB
DATE:	4.20.18
PROJECT NO:	17-134
SCALE:	1" = 200'
SHEET	1 OF 2



**SCHLAGEL & ASSOCIATES, P.A.**

Engineers • Planners • Surveyors • Landscape Architects

14920 West 107th Street • Lenexa, Kansas 66215

www.schlagelassociates.com • (913) 492-5158 • Fax: (913) 492-8400

Missouri State Certificates of Authority

#E2002003800-F #LAC2001005237 #LS2002008859-F

EXHIBIT 1 EXISTING CONDITIONS