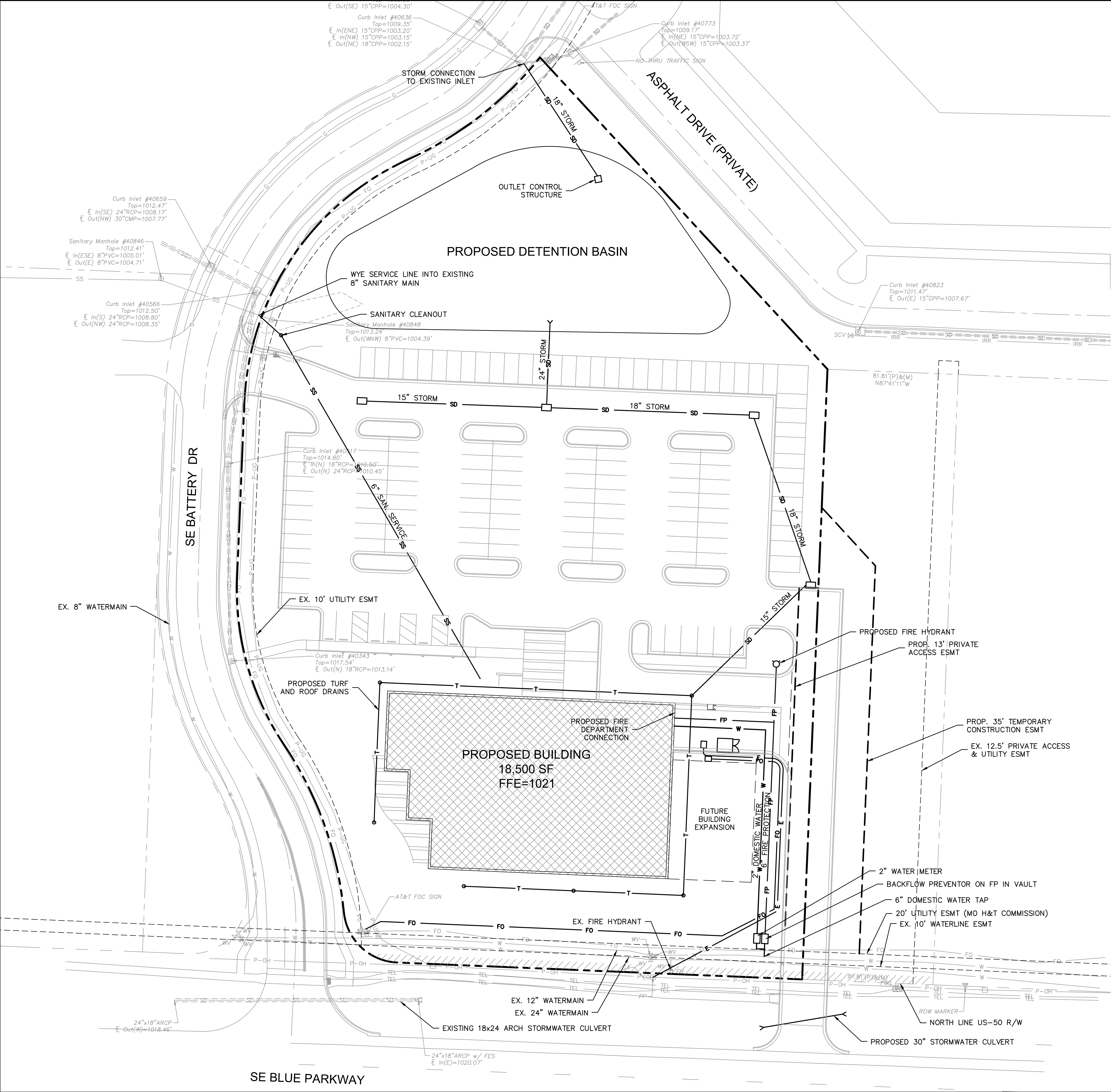


DWG: F:\2018\0001-0500\018-0330-B\40-Design\AutoCAD\ Preliminary Plans\ Sheets\ GNCV\ WORK PACKAGE 4\LEES SUMMIT\ C-4LS_UTL_80330.dwg USER: kprice
DATE: Aug 16, 2018 2:02pm XREFS: C-4LS_TBLK_80330 C-4LS_PBASE_80330 C-4LS_PBASE_80330 C-4LS_PBASE_80330

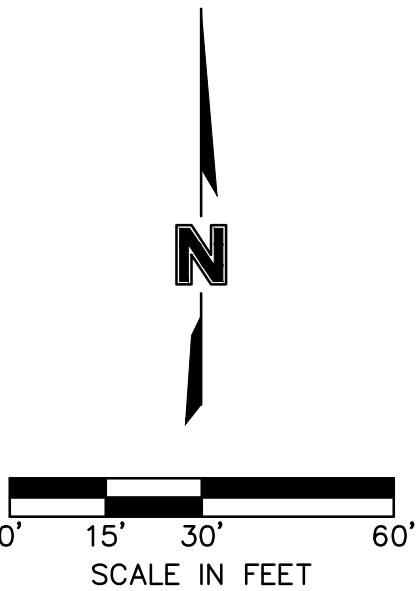


EXISTING CONDITIONS LEGEND

| | |
|------|-------------------------|
| --- | PROPERTY LINES |
| --- | EASEMENT LINES |
| P-OH | OVERHEAD ELECTRIC |
| P-UG | UNDERGROUND ELECTRIC |
| TEL | UNDERGROUND TELEPHONE |
| FO | UNDERGROUND FIBER OPTIC |
| G | GAS LINE |
| W | WATER LINE |
| SD | STORM SEWER LINE |
| SS | SANITARY SEWER LINE |

PROPOSED CONDITIONS LEGEND

| | |
|----|---------------------------------|
| E | PROPOSED UNDERGROUND ELECTRIC |
| FO | PROPOSED FIBER OPTIC |
| W | PROPOSED WATER LINE |
| FP | PROPOSED FIRE PROTECTION LINE |
| SD | PROPOSED STORM SEWER LINE |
| T | PROPOSED TURF DRAIN LINE |
| SS | PROPOSED SANITARY SEWER SERVICE |
| | CONCRETE CURB & GUTTER |
| | PROPOSED BUILDING |



SAPP DESIGN ARCHITECTS

3750 S. Fremont Ave.
Springfield, MO 65804 417.877.9600

Sapp Design Associates Architects, P.C.
Missouri State Certificate of Authority #000607

helix.

1629 Walnut
Kansas City, MO 64108 816.300.0300

SPECIAL NOTICES

In the event the client consents to allow, authorize or approve of changes to any plans, specifications or other construction documents, and these changes are not approved in writing by the design professional, the client recognizes that such changes and the results thereof are not the responsibility of the design professional. Therefore, the client agrees to release the design professional from any liability arising from the construction, use or result of such changes. In addition, the client agrees to the fullest extent permitted by law, to indemnify and hold the design professional harmless from any damage, liability or cost (including reasonable attorney's fees and costs of defense) arising from such changes.

The personal seal of the registered Architect or Engineer shall be the legal equivalent of his signature wherever & whenever used, and the owner of the seal shall authorize this seal and the specification sections pertaining to this sheet. Responsibility shall be disclaimed for all other plans, specifications, estimates, reports or other documents or instruments relating to or intended to be used for any part or parts of the architectural project.

Mid-Continent Public Library
PRELIMINARY DEVELOPMENT PLANS FOR
EAST LEE'S SUMMIT BRANCH
2240 SE BLUE PARKWAY
LEE'S SUMMIT, MO 64063
JACKSON COUNTY

PACKAGE
04

Engineer of Record

Terry M Parsons, Engineer MO PE-2018010505

MOLSSON
ASSOCIATES

7301 West 133rd Street, Suite 200
Overland Park, KS 66213
TEL 913.381.1170
FAX 913.381.1174
www.molsonassociates.com

Olsson Associates
Missouri State Certificate of Authority #001592

| Revision No. | Description | Date |
|--------------|-------------|------|
|--------------|-------------|------|

| Project No. | Date | Drawn |
|-------------|----------|-------|
| B18-0330 | 08-17-18 | KDP |

Drawing No.

C2.0
PDP UTILITY PLAN

© Copyright 2018 - Sapp Design Associates, Architects, P.C.