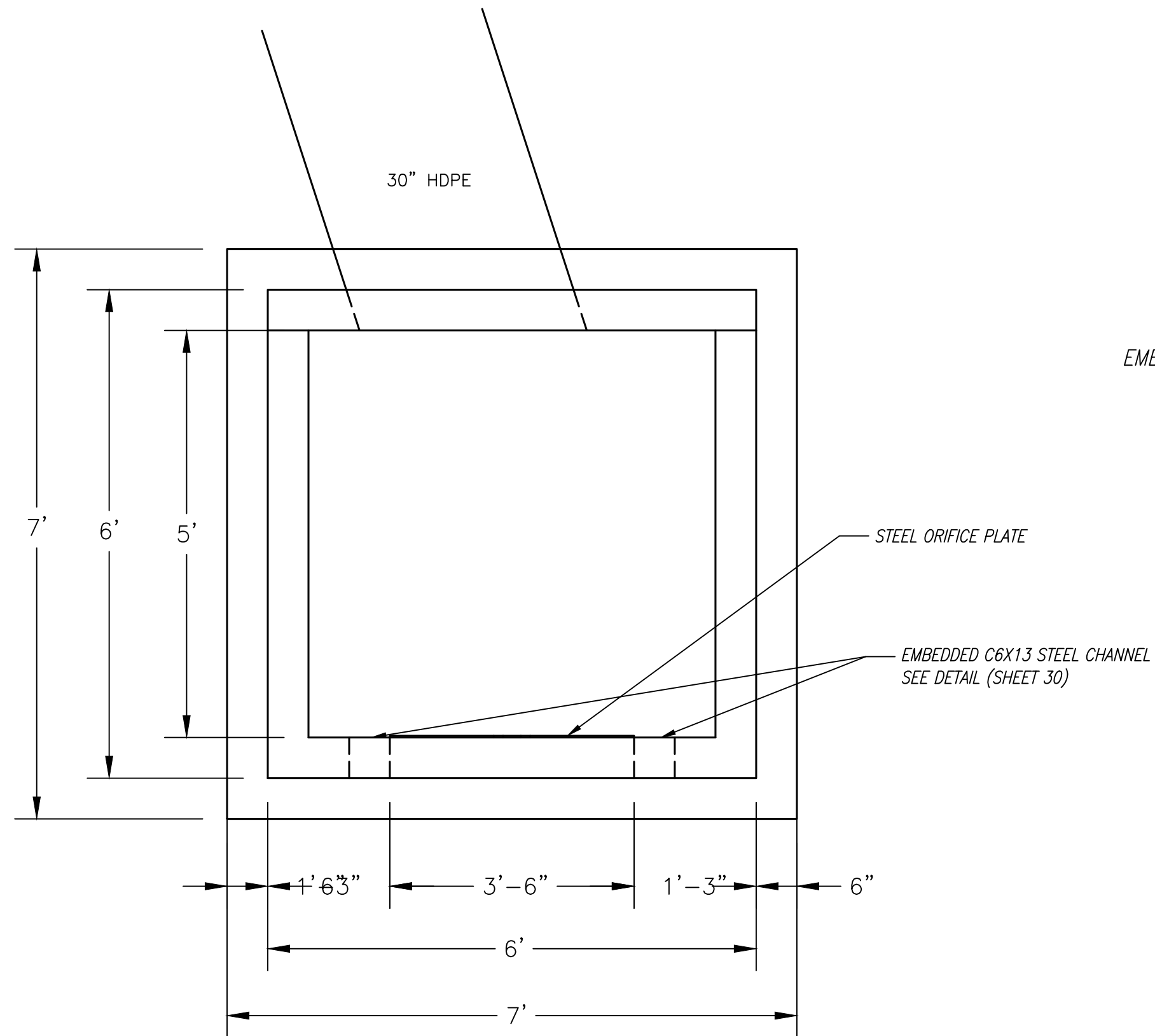


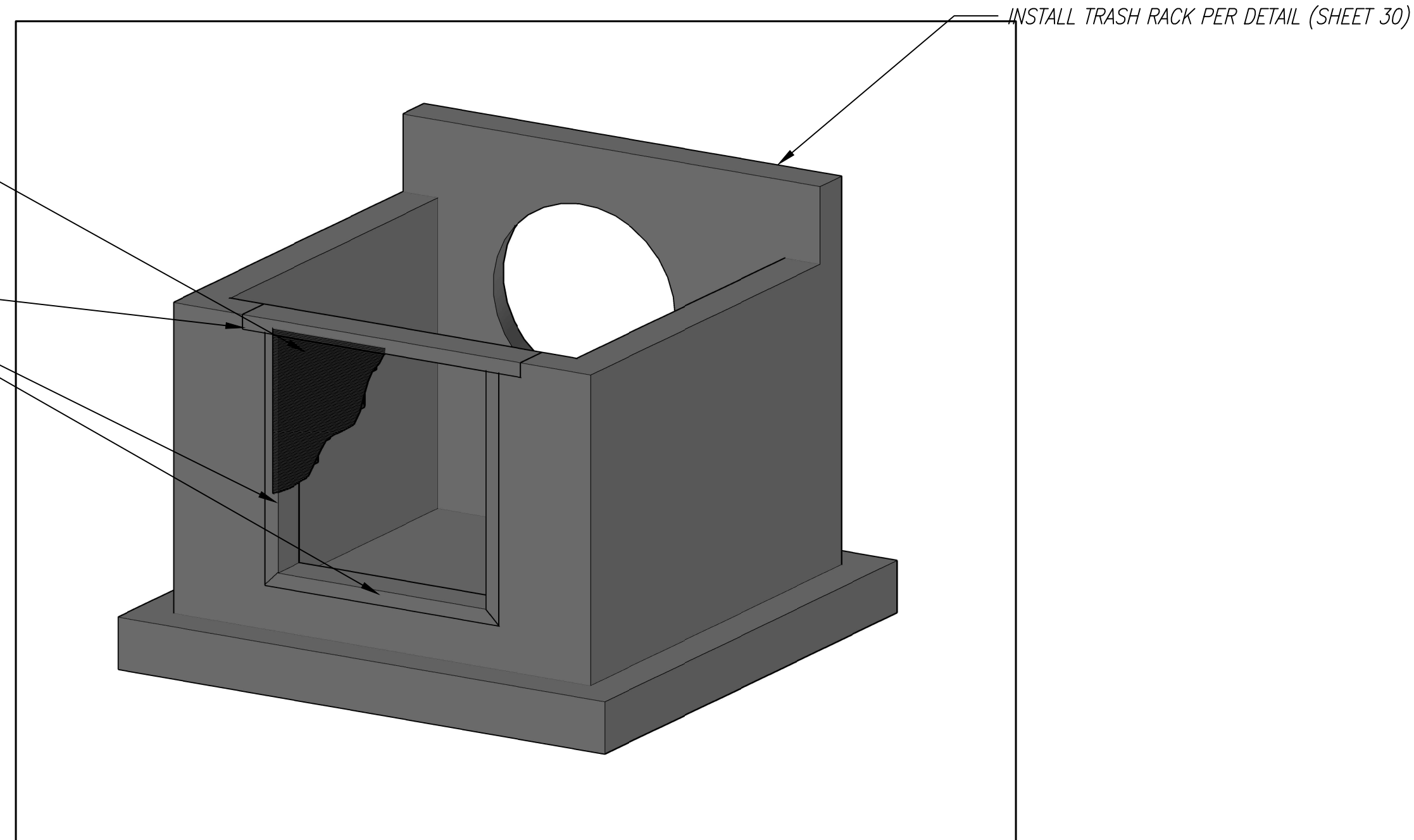
# WATER QUALITY POND OUTFALL STRUCTURE DETAIL



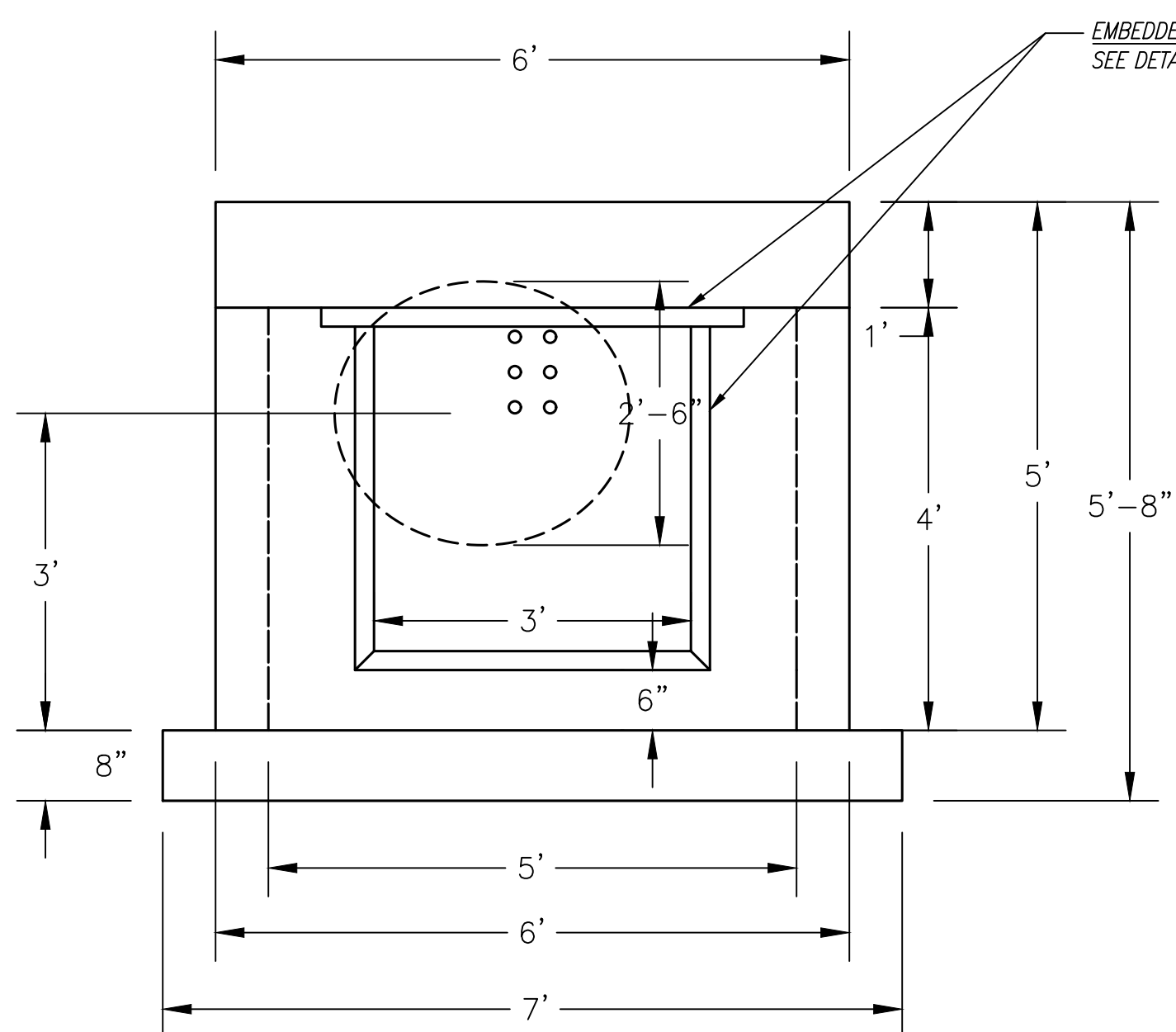
TOP VIEW

NO. 93 JOHNSON VEE WIRE™ STAINLESS STEEL  
WELL SCREEN (OR EQUIVALENT)

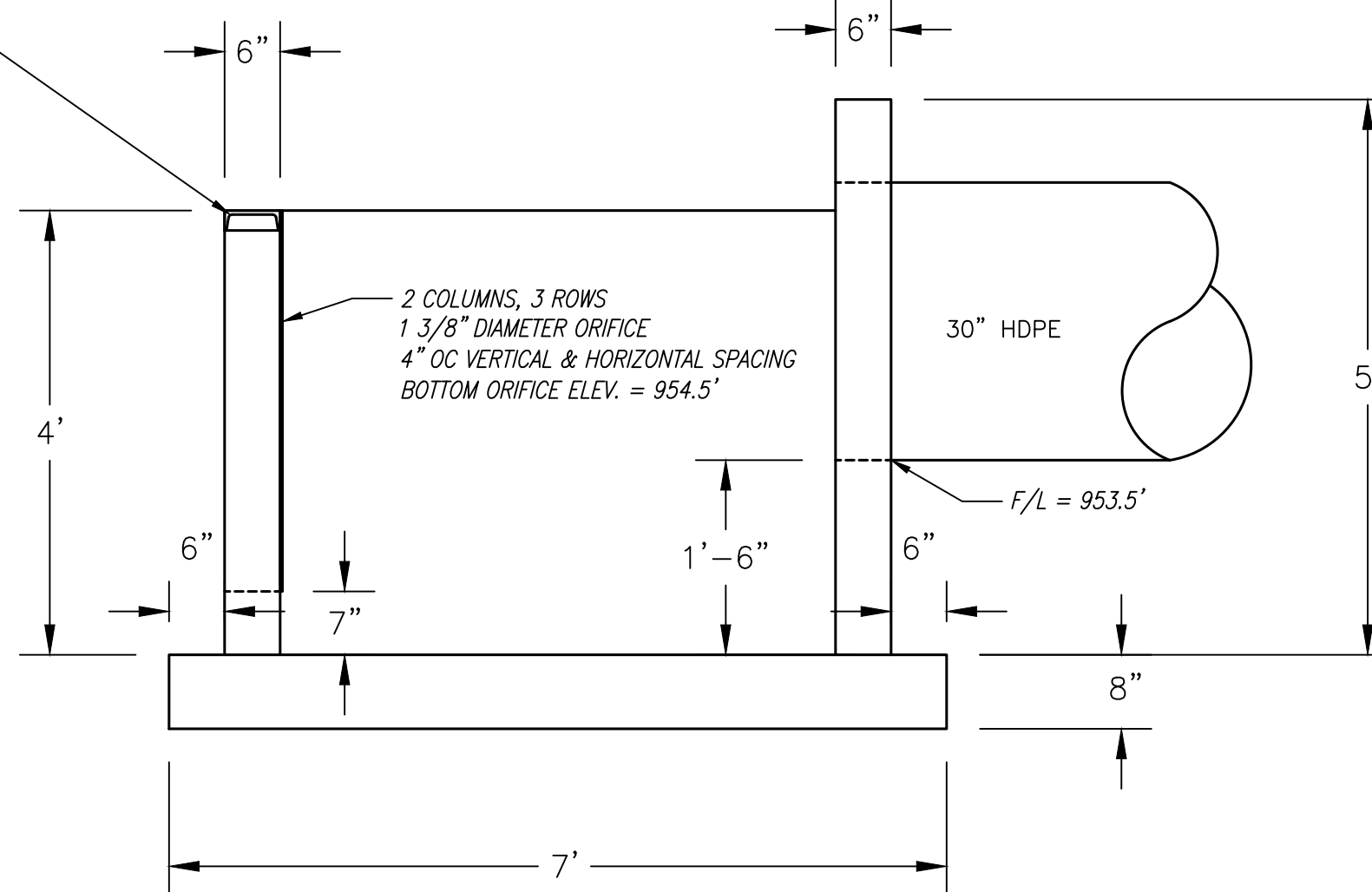
EMBEDDED C6X13 STEEL CHANNEL  
SEE DETAIL (SHEET 30)



ISOMETRIC VIEW



FRONT VIEW



SIDE VIEW

**NOTE**

OUTLET STRUCTURE SHALL BE PRECAST IN NATURE.  
CONTRACTOR TO PROVIDE SHOP DRAWINGS FOR  
APPROVAL PRIOR TO MANUFACTURING.

REVISION



**PHOENIX ENGINEERING & SURVEYING, LLC**  
 3835 S. NORTHERN BLVD.  
 INDEPENDENCE, MO 64602  
 (816) 748-9000 FAX: (816) 743-9700  
 ENGINEERING CERTIFICATE NO: MO E-2000151302-D KS: E-853  
 SURVEYING CERTIFICATE NO: MO LS-2000151303-D KS: LS-138

WHISPERING WOODS  
 LEE'S SUMMIT, JACKSON COUNTY, MO  
 STREET & STORM SEWER PLANS  
 POND OUTLET DETAIL

DESIGNED	BLG
DRAWN	BLG
SCALE	Noted
DATE	09-01-2017
JOB NO.	04078
SHEET	31 OF 40

© PHOENIX ENGINEERING & SURVEYING LLC - 2018

DATE PLOTTED: 8/10/2018 2:15 PM ; LAST SAVE DATE: 8/10/2018 2:06 PM

H:\projects\2004\04078A2 - Whispering Woods Phase 1\dwg\04078 - Street & Storm Plans - STORM SHEETS\good.dwg