

### StormRax™ Installation Instructions

All StormRax trash racks are supplied pre-drilled, include concrete anchor bolts and all the necessary mounting hardware.  
 NOTE: Installer must use the pre-drilled holes. Please call if you have any questions.

#### Concrete Riser Pipes and Boxes

The following instructions will guide the installer(s) through a quick and successful installation of concrete riser pipes and boxes.

##### Tools Required:

- Hammer drill
- 3/8" diameter masonry drill bit
- 1/2" wrench or adjustable wrench

**STEP 1:** Lift trash rack onto concrete structure (typically can be done with 1-2 persons) Note: Top of structure must be sound and flat (within 1/8") around top of mounting surface. Mounting a trash rack to a structure that is not sound is not recommended.

**STEP 2:** Position (center) trash rack on structure and mark all mounting hole locations.

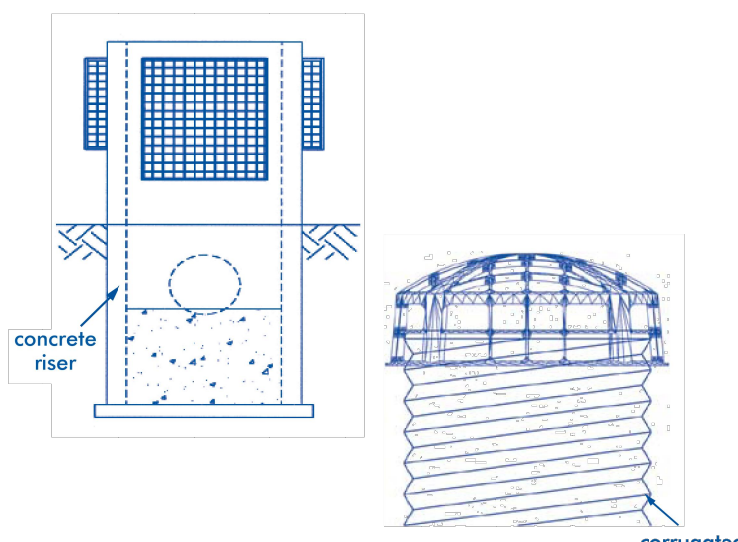
**STEP 3:** Remove trash rack from concrete structure.

**STEP 4:** Drill mounting holes using a 3/8" diameter masonry drill bit.

**STEP 5:** Install 3/8" X 3" anchor bolts (supplied).

**STEP 6:** Lift trash rack over anchor bolts. Ensure trash rack is completely flush against concrete mounting surface and then secure using flat washers and nuts (supplied).

**STEP 7:** Ensure all anchor bolt nuts are tight and secure. DO NOT OVERTIGHTEN!



#### Corrugated Pipe

The following instructions will guide the installer(s) through a quick and successful installation on corrugated pipes.

**STEP 1:** Locate the 4 mounting brackets on the crossbars and slide to the outside of the rack.

**STEP 2:** Lift trash rack onto corrugated riser, resting crossbars on top of riser. (Typically can be done with 1 or 2 persons) Top of riser should be sound and flat.

**STEP 3:** Center rack on top of riser, having equal distance between the outside of the riser and the outside of the trash rack.

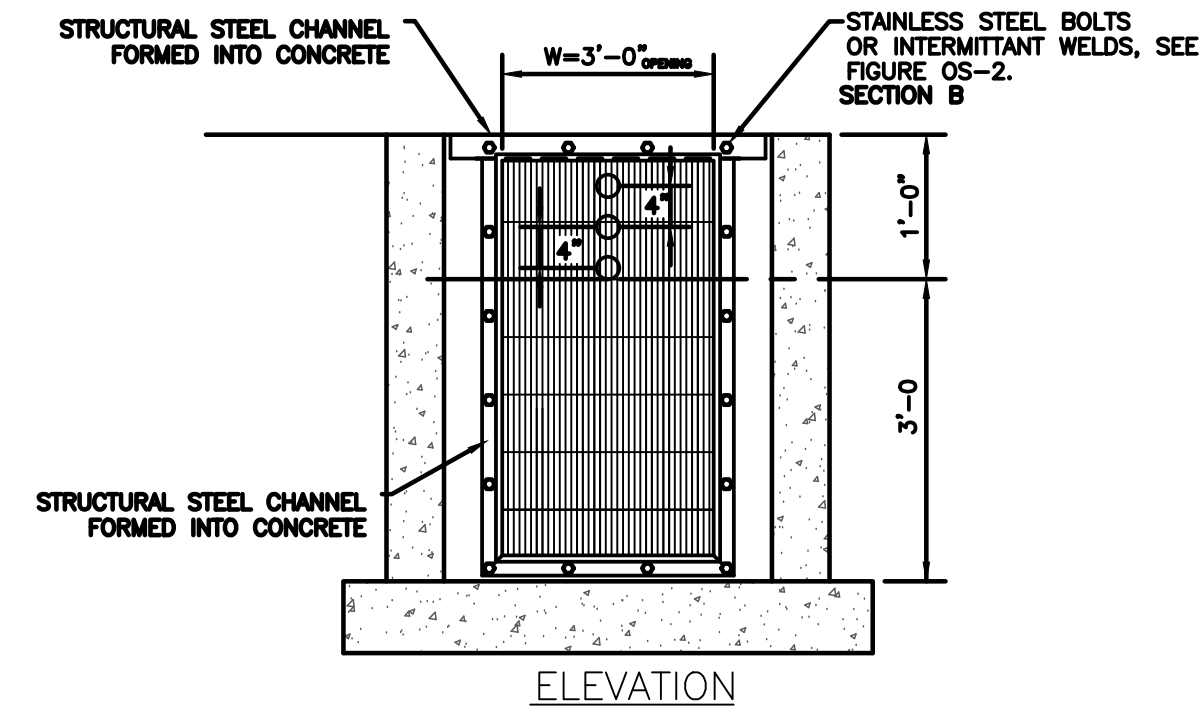
**STEP 4:** Slide all 4 mounting brackets to the outside of the riser. With appropriate screw (for metal or plastic), attach the mounting brackets to the corrugated riser.

**If you have any questions concerning installation, please contact your local sales engineer.**



NOTHING IN THIS CATALOG SHOULD BE CONSTRUED AS AN EXPRESSED WARRANTY OR AN IMPLIED WARRANTY OF MERCHANTABILITY OR FITNESS FOR ANY PARTICULAR PURPOSE. SEE THE CONTECH STANDARD CONDITIONS OF SALE (VIEWABLE AT WWW.CONTECHES.COM/COS) FOR MORE INFORMATION.

©2013 Contech Engineered Solutions LLC  
 All rights reserved. Printed in USA.



#### ORIFICE PLATE NOTES:

1. PROVIDE CONTINUOUS NEOPRENE GASKET MATERIAL BETWEEN THE ORIFICE PLATE AND CONCRETE.
2. BOLT PLATE TO CONCRETE 12" MAX. ON CENTER. SEE TABLE OS-2 FOR PLATE THICKNESS.

#### EURY AND WQCV TRASH RACKS:

1. WELL-SCREEN TRASH RACKS SHALL BE STAINLESS STEEL AND SHALL BE ATTACHED BY INTERMITTENT WELDS ALONG THE EDGE OF THE MOUNTING FRAME.
2. TRASH RACK OPEN AREAS ARE FOR SPECIFIED TRASH RACK MATERIALS. TOTAL TRASH RACK SIZE MAY NEED TO BE ADJUSTED FOR MATERIALS HAVING DIFFERENT OPEN AREA/GROSS AREA RATIO (R VALUE).
3. STRUCTURAL DESIGN OF TRASH RACKS SHALL BE BASED ON FULL HYDROSTATIC HEAD WITH ZERO HEAD DOWNSTREAM OF THE RACK.

#### OVERFLOW SAFETY GRATES:

1. OVERFLOW SAFETY GRATE SHALL BE STORMRAX SLOPED ROOF STRUCTURE OR APPROVED EQUAL.
2. INSTALLATION OF OVERFLOW SAFETY GRATE SHALL BE PER MANUFACTURER'S INSTALLATION GUIDE PROVIDED ON THIS SHEET

FIGURE OS-1 ORIFICE PLATE AND TRASH RACK DETAILS AND NOTES

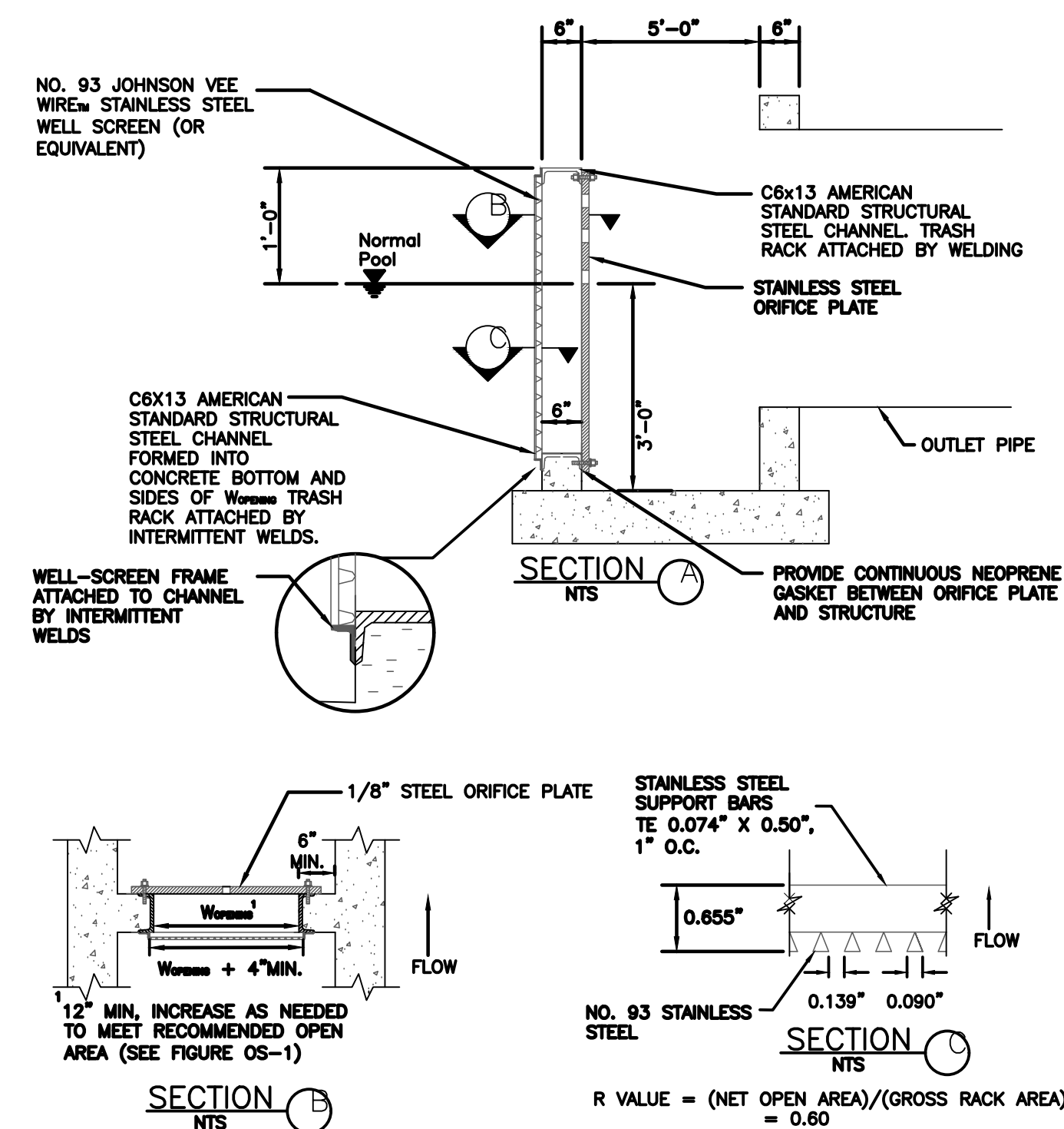
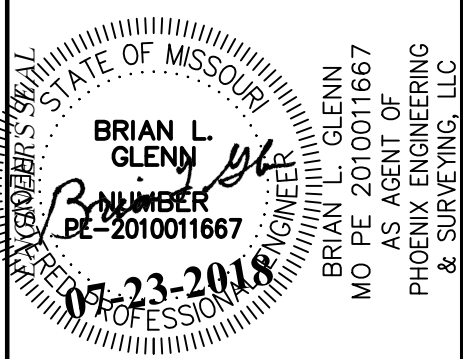


FIGURE OS-2 TYPICAL OUTLET STRUCTURE WITH WELL SCREEN TRASH RACK

REVISION



**PHOENIX ENGINEERING & SURVEYING, LLC**  
 3835 S. NORTHERN BLVD.  
 INDEPENDENCE, MO 64602  
 (816) 748-9000 FAX: (816) 743-9700  
 ENGINEERING CERTIFICATE NO: MO E-2000151302-D KS: E-853  
 SURVEYING CERTIFICATE NO: MO LS-2000151303-D KS: LS-138

WHISPERING WOODS  
 LEE'S SUMMIT, JACKSON COUNTY, MO  
 STREET & STORM SEWER PLANS  
 POND OUTLET DETAIL

DESIGNED	BLG
DRAWN	JRT
SCALE	Noted
DATE	09-01-2017
JOB NO.	04078
SHEET	38