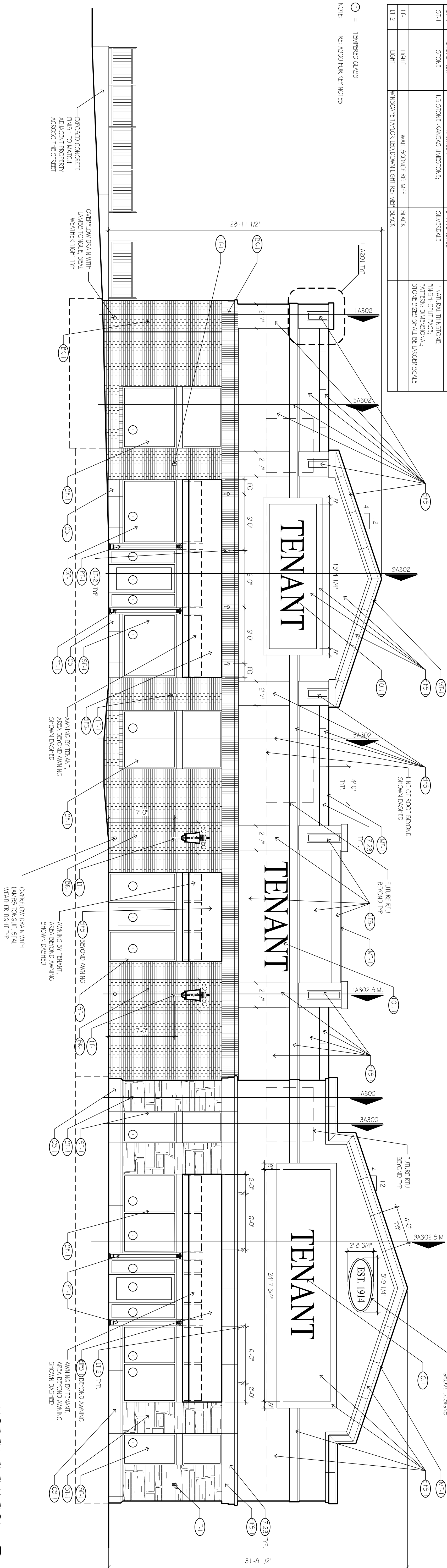


| | | MATERIAL LEGEND | |
|--------|-------------|------------------------------------------|-----------------------|
| SYMBOL | MATERIAL | MATERIAL/REMARKS | COLOR |
| BR-1 | BRICK | SOLID CITY BRICK | COPPER/CO. SMOOTH |
| BR-2 | BRICK | SOLID CITY BRICK | BROWN/ST. RUSTIC |
| CS-1 | CAS. STONE | CONCRETE CAS. STONE | BLK/GRY. SMOOTH |
| EPS-1 | EPS | SHERMAN WILLIAMS | WOOD SHED SHING. 1/8" |
| MR-1 | METAL | PVC/CAD | ALUMINUM |
| PL-1 | PLANT | SHERMAN WILLIAMS OR EQUIVA. | MATCH STONE/FRONT |
| SP-1 | STONE/FRONT | KANAWHA | DARK BROWN/ZE. |
| ST-1 | STONE | US STONE. KANAWHA LIMESTONE. | SILVER/REAR |
| TL-1 | LIGHT | WALL SCENE RE: METAL | BLACK |
| TL-2 | LIGHT | IMAGE/CASE. TACKLED DOWN LIGHT RE: METAL | BLACK |

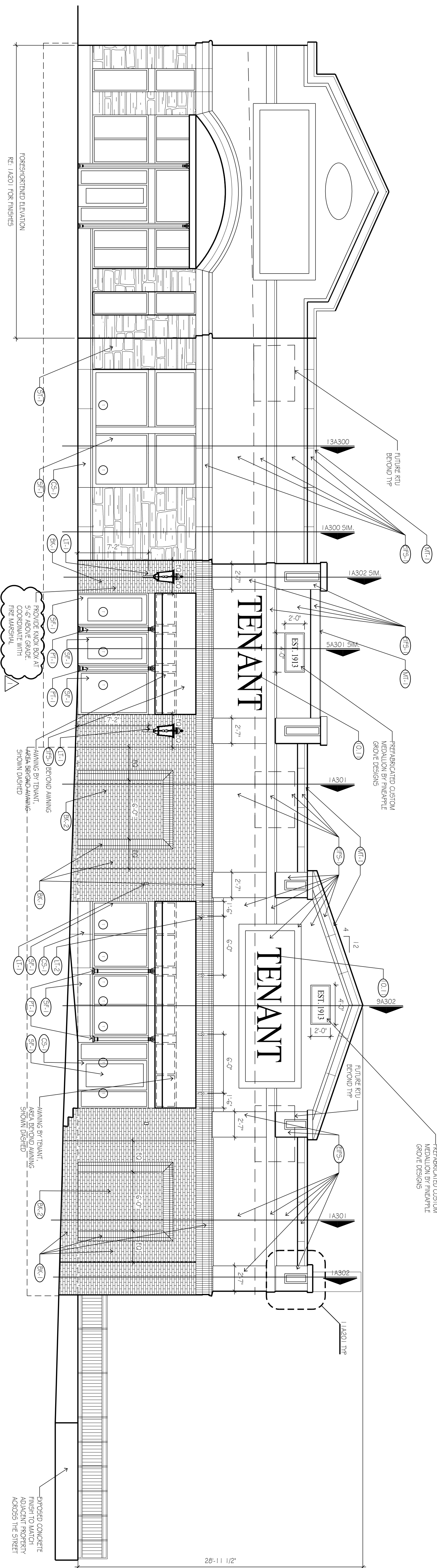
① = TEMPERED GLASS



NORTH ELEVATION

SCALE: 3/16" = 1'-0"

③



SOUTH ELEVATION

SCALE: 3/16"=1'-0"

①

FASCINATION NORTH - LOT 44
MULTI-TENANT SHELL

3300 SW FASCINATION DR
LEE'S SUMMIT, MO 64081

[illegible]The logo for Klover Architects features a stylized 'K' composed of three geometric shapes: a dark gray vertical rectangle on the left, a light gray triangle pointing right in the middle, and a dark gray triangle pointing left on the right. To the right of this graphic, the word 'klover' is written in a bold, lowercase, sans-serif font, followed by 'architects' in a regular weight of the same font. Below 'architects', the word 'incorporated' is written in a smaller, all-caps, sans-serif font.

kloverarchitects
incorporated

10955 LOWELL AVENUE, SUITE 700 • OVERLAND PARK, KS 66210
ph: 913.649.8181 • fx: 913.649.1275 • www.klover.net