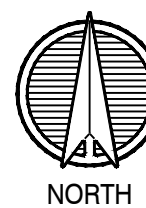
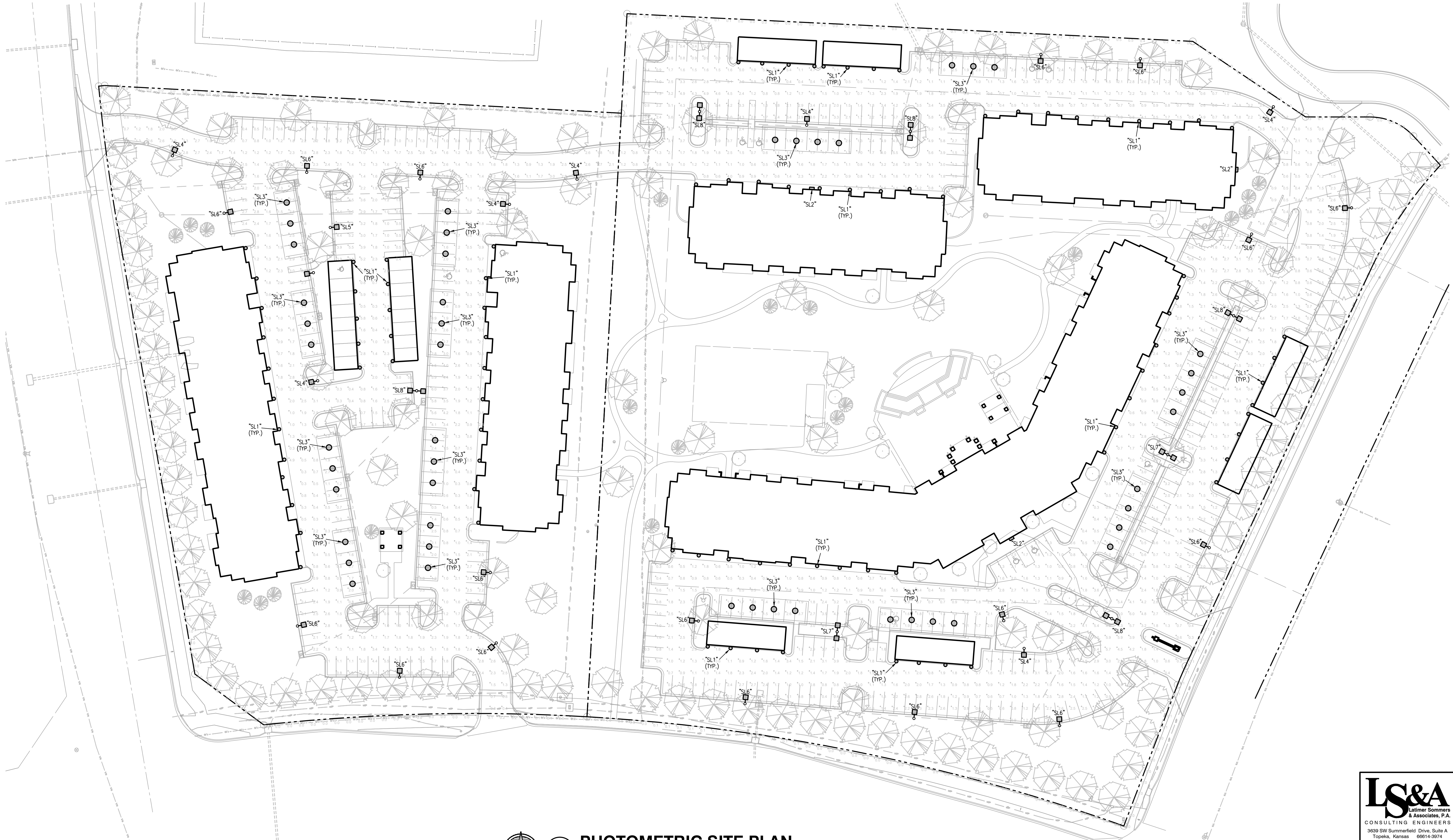


SITE LIGHT FIXTURE SCHEDULE												
MARK	MANUFACTURE	MODEL NUMBER	MOUNTING			FINISH	LAMPS					REMARKS
			RECESS	SURFACE	WALL		LED	FLOUR.	HID	CODE	QUANTITY	
SL 1	PRESCOLITE	1152-962			X		X		26 W CFL	1		
SL 2	HUBBELL	LMC-30LU-4K-4			X	BRONZE	X		71 W LED	1	6	
SL 3	HUBBELL	BRI-01		X		BRONZE	X	X	26 W CFL	1	7	
SL 4	CREE	ARE-EDR-2MB-DA-12-E-UL-BZ-525-40K		POLE		BRONZE	X		197 W LED	1	2,3,4	
SL 5	CREE	ARE-EDR-4MB-DA-12-E-UL-BZ-525-40K		POLE		BRONZE	X		197 W LED	2	1,3,4	
SL 6	CREE	ARE-EDR-3MB-DA-12-E-UL-BZ-525-40K		POLE		BRONZE	X		197 W LED	1	2,3,4	
SL 7	CREE	ARE-EDR-3MB-DA-12-E-UL-BZ-525-40K		POLE		BRONZE	X		197 W LED	2	1,3,4	
SL 8	CREE	ARE-EDR-4MB-DA-12-E-UL-BZ-525-40K		POLE		BRONZE	X		197 W LED	2	2,3,4	

REMARKS:

- 1 PROVIDE WITH (2) HEADS AT 180° FROM EACH OTHER.
- 2 PROVIDE WITH (1) HEAD.
- 3 MOUNT ON 20" POLE ROUND STRAIGHT STEEL, 80 MPH RATED.
- 4 VERIFY EPA RATING OF POLE WITH MANUFACTURER.
- 5 NOT USED
- 6 MOUNT AT 12' AFG
- 7 MOUNT UNDER CARPORT CANOPY

STATISTICS						
Description	Avg	Max	Min	Max/Min	Avg/Min	Avg/Max
Drive Area	1.9 fc	6.0 fc	0.3 fc	20:01	6.3:1	0.32:1
Property Line	0.1 fc	0.5 fc	0.0 fc	N/A	N/A	N/A



1 1"=40'-0"

PHOTOMETRIC SITE PLAN

ARCHITECTURE  
LANDSCAPE  
ARCHITECTURE  
INTERIORS  
ENERGY SERVICES

**NSPJ**

ARCHITECTS<sup>PA</sup>  
P. 913.831.1415  
F. 913.831.1563  
NSPIARCH.COM  
© COPYRIGHT 2015

3515 W. 75TH ST., SUITE 201  
PRAIRIE VILLAGE, KS 66208



A NEW APARTMENT COMMUNITY AT:

**SUMMIT SQUARE II**

DONOVAN RD. & WARD RD.  
LEE'S SUMMIT, MISSOURI

DRAWING RELEASE LOG  
● 04.13.2018 - FDP SUBMITTAL

REVISIONS

DATE  
04/13/2018  
JOB NO.  
614618  
DRAWN BY:  
CAD  
SHEET NO.

**E0.01**

**LS&A**  
Latimer Sommers  
& Associates, P.A.  
CONSULTING ENGINEERS

3639 SW Summerfield Drive, Suite A  
Topeka, Kansas 66614-3974  
Telephone: (785) 233-2332  
FAX: (785) 233-0947  
Email: lsapa@sapa.com

LSA PROJECT NO. 1804007