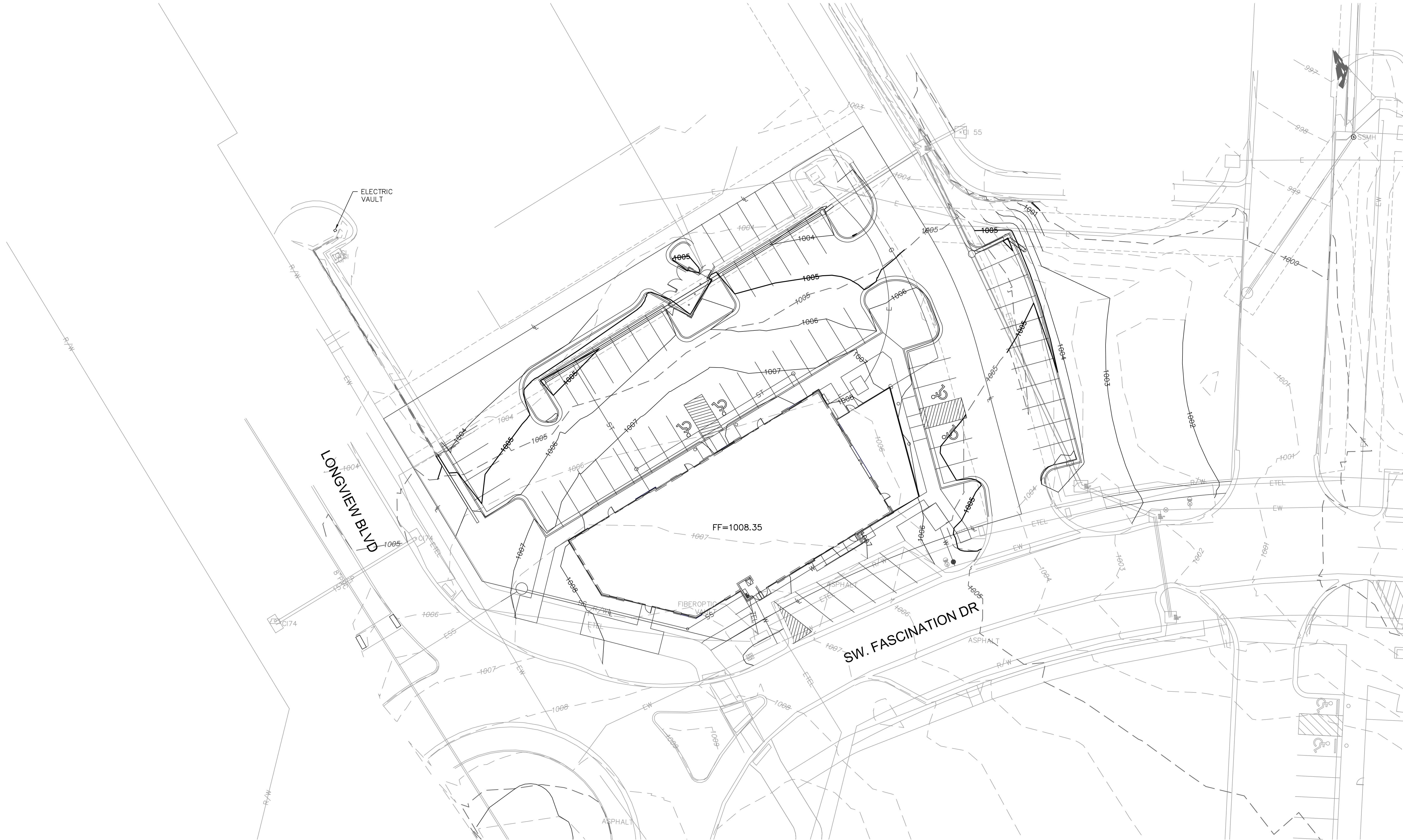


DWG: F:\2017\3001-3500\017-3175\40-Design\AutoCAD\Final Plans\Sheets\GNCV\01\_Site Plans\_36x24\C\_GRD01\_73175.dwg  
DATE: Apr 04, 2018 10:48am  
USER: ssaylor



EARTHWORK QUANTITIES		
LOCATION	CUT (C.Y.)	FILL (C.Y.)
SITE	39	1166
TOTAL	39	1166

**EARTHWORK QUANTITIES NOTES:**  
1. EARTHWORK QUANTITIES BASED ON FINISHED GRADE SURFACE AND DO NOT INCLUDE ADJUSTMENTS FOR TOPSOIL AND SHRINKAGE.  
2. EARTHWORK QUANTITIES DO NOT TAKE INTO CONSIDERATION EXCAVATION, REMOVAL AND DISPOSAL OF MATERIAL DEEMED UNSUITABLE BY A GEOTECHNICAL ENGINEER. THE EARTHWORK CONTRACTOR IS RESPONSIBLE FOR EXCAVATION, REMOVAL AND DISPOSAL OF UNSUITABLE MATERIAL AND FOR REPLACING IT WITH SUITABLE MATERIAL.

LEGEND	
-100-	EXISTING INDEX CONTOURS
-100-	EXISTING INTERMEDIATE CONTOURS
-100-	PROPOSED INDEX CONTOURS
-100-	PROPOSED INTERMEDIATE CONTOURS
-100-	FUTURE INDEX CONTOURS
-100-	FUTURE INTERMEDIATE CONTOURS

**GENERAL NOTES:**

- CONTRACTOR SHALL ADHERE TO THE "DESIGN AND CONSTRUCTION MANUAL" SECTION 2100 AS ADOPTED BY THE CITY OF LEE'S SUMMIT (LATEST EDITION), FOR EXCAVATION AND EMBANKMENT WORK WITHIN THE PROPOSED RIGHT-OF-WAY.
- AREAS OF CONSTRUCTION SHALL BE STRIPPED OF ALL VEGETATION, ORGANIC MATTER AND TOPSOIL TO A DEPTH AS RECOMMENDED BY GEOTECHNICAL ENGINEER AND OR TESTING AGENCY. SOILS REMOVED DURING SITE STRIPPING SHOULD BE EVALUATED TO DETERMINE IF PORTIONS OF THE TOPSOIL STRATUM MAY BE UTILIZED AS STRUCTURAL FILL WITHIN PAVEMENT AREAS. ANY MATERIAL NOT DEEMED AS SUITABLE FILL MATERIAL BY THE GEOTECHNICAL ENGINEER AND OR TESTING AGENCY SHALL BE REMOVED FROM THE JOB SITE BY THE CONTRACTOR AT HIS EXPENSE.
- CONTRACTOR SHALL ADHERE TO THE SITE PREPARATION AND STRUCTURAL FILL RECOMMENDATIONS AS CALLED OUT IN THE GEOTECHNICAL REPORT AND ENGINEERING EVALUATION AS PROVIDED BY THE GEOTECHNICAL ENGINEER.
- ALL EMBANKMENT OUTSIDE OF RIGHT-OF-WAY SHOULD BE PLACED IN CONTROLLED LIFTS HAVING A MAXIMUM LOOSE LIFT THICKNESS OF 8". EMBANKMENT SHOULD BE COMPACTED TO A MINIMUM OF 95% OF THE MATERIALS MAXIMUM DRY DENSITY AS DETERMINED BY ASTM D-698 (STANDARD PROCTOR COMPACTION). MOISTURE CONTENT OF THE FILL AT THE TIME OF COMPACTION SHALL BE WITHIN A RANGE OF -0 TO +4 PERCENT OF OPTIMUM MOISTURE CONTENT.

OLSSON<sup>®</sup>  
ASSOCIATES

Olson Associates - Civil Engineering

www.olsonassociates.com

GRADING PLAN  
FINAL DEVELOPMENT PLANS

NEW LONGVIEW  
LOT 44

LEE'S SUMMIT, MO

drawn by: J.S.  
checked by: J.S.  
QA/QC by: M.G.D.  
project no.: 018-1005  
date: 2018.04.04

SHEET  
C004

NO. REV.

DATE

REVISIONS DESCRIPTION

BY

REVISIONS