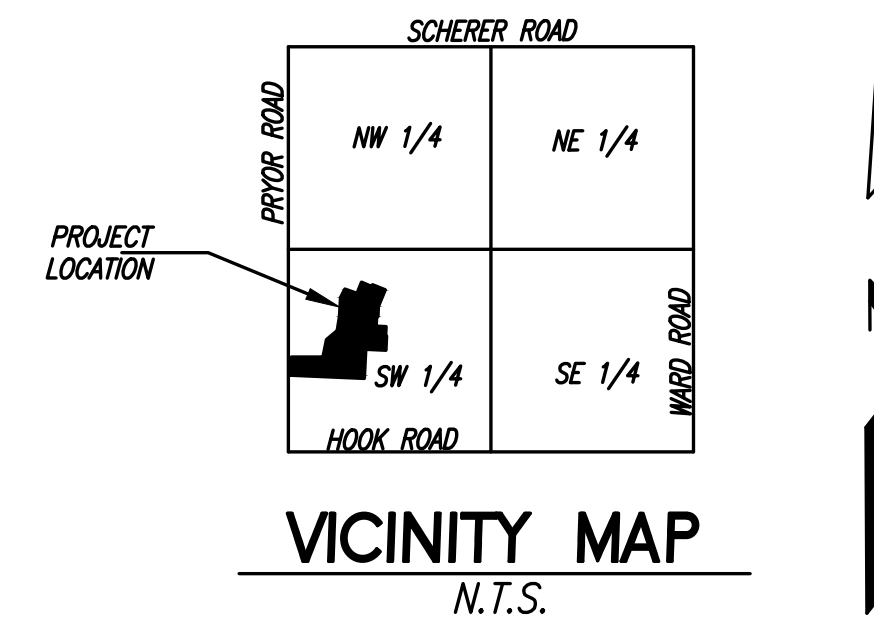


# WHISPERING WOODS 1st PLAT LOTS 1 THRU 33

A SUBDIVISION IN LEE'S SUMMIT, JACKSON COUNTY, MISSOURI  
SW 1/4, SEC 24, TWP 47-N, RANGE 32W  
PUBLIC IMPROVEMENTS



## LEGAL DESCRIPTION

WHISPERING WOODS LOTS 1 THRU 33, TRACTS A, B, C & D  
PART OF THE SW 1/4 SECTION 24, T 47 N, R 32 W OF THE 5TH P.M.  
LEE'S SUMMIT, JACKSON COUNTY, MISSOURI

## PROJECT BENCH MARK

ELEV. 1006.89 (NAVD 1988 DATUM)

MISSOURI DEPARTMENT OF NATURAL RESOURCES  
GRS ALUMINUM DISK STAMPED "JA-47" LOCATED  
NEAR THE INTERSECTION OF HWY 150 WITH  
REGGATA DRIVE AND HWY 291

INDEX OF SHEETS	
NO.	TITLE
1	COVER
2	NOTES
3	STUB CHARTS
4	GENERAL LAYOUT
5	PLAN & PROFILE
6	PLAN & PROFILE
7	PLAN & PROFILE
8	PLAN & PROFILE
9	DETAILS
10	DETAILS

**APPROVED**

CITY ENGINEER

DATE

**DEVELOPER:**

WHISPERING WOODS LAND, L.L.C.  
803 P.C.A. ROAD  
WARRENSBURG, MO 64093  
AGENT: RICK FRYE  
PHONE: 816-564-2230  
FAX: 660-429-1801

CONSTRUCTION QUANTITIES		
ITEM	QUANTITY	UNIT
<b>SANITARY SEWERS</b>		
5' DIA. MANHOLE	3	EA.
4' DIA. MANHOLE	13	EA.
5' DIA. OUTSIDE DROP MANHOLE	1	EA.
4' DIA. OUTSIDE DROP MANHOLE	3	EA.
24" PVC (SDR-26)	778	L.F.
8" PVC (SDR-26)	2578	L.F.
4" SERVICE LINES	838	L.F.
CONNECT TO EXISTING	2	EA.

IT IS THE RESPONSIBILITY OF THE CONTRACTOR TO  
VERIFY ALL QUANTITIES SHOWN ON THIS TABLE. LENGTH  
OF SERVICE LATERALS IS CALCULATED TO RIGHT-OF-WAY  
ONLY.

# ON-SITE PUBLIC SANITARY SEWER

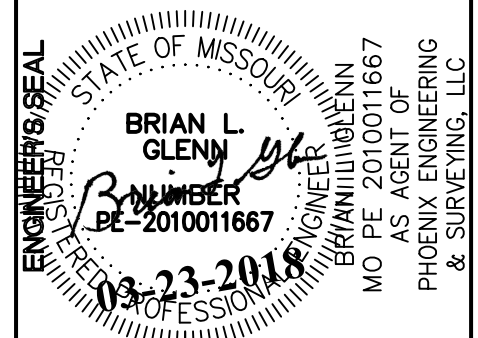


LOCATION MAP

## UTILITY CONTACTS

SOUTHWESTERN BELL TELEPHONE	(816) 871-9900
MISSOURI ONE-CALL SYSTEM	(800) DIG-RITE
KPL GAS SERVICE COMPANY	(816) 221-2200
KANSAS CITY POWER & LIGHT	(816) 471-0060
PUBLIC WORKS	(816) 969-1800
AMERICAN CABLEVISION	(816) 231-1444
WATER POLLUTION CONTROL DEPT	(816) 513-0303
CITY PLANNING & DEVELOPMENT	(816) 969-1600
FIRE DEPARTMENT	(816) 969-1300

REVISION  
Δ REVISED 2-15-18: "ON-SITE" ADDED TO TITLE



**PHOENIX ENGINEERING & SURVEYING, LLC**  
3865 S. NORTHERN BLVD.  
INDEPENDENCE, MO 64052  
(816) 743-9000 FAX: (816) 743-9700  
ENGINEERING CERTIFICATE NO.: MO E-2000151302-D  
SURVEYING CERTIFICATE NO.: MO LS-2000151303-D  
KS: E-853  
KS: LS-138

WHISPERING WOODS - 1ST PLAT  
LOTS 1 THRU 33  
LEE'S SUMMIT, JACKSON COUNTY, MO  
SANITARY SEWER PLANS  
COVER

DESIGNED	BLG
DRAWN	JRT
SCALE	
NOTED	
DATE	09-01-2017
JOB NO.	04078
SHEET	

1 of 10