

# VOLTAIRE MEDIUM ARCHITECTURAL FLOOD LIGHT

# VF2

## LED

CATALOG #:

TYPE:

PROJECT:

NOTES:

EXAMPLE

**VF2 - L70/750 - MF - SR - DBZ - OPTIONS - DIM - UNV**

SERIES

LUMEN  
PACKAGE

CRI &  
CCT

DISTRIBUTION

MOUNTING

FINISH

OPTIONS

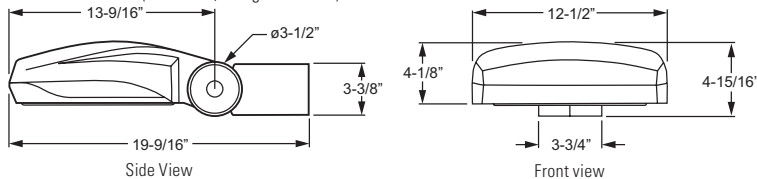
DRIVER

VOLTAGE

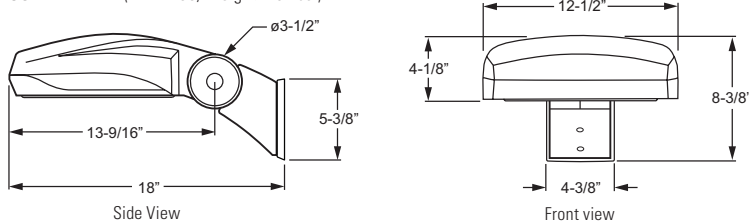


## CROSS SECTIONS

**STRAIGHT ARM** (EPA: 1.00/Weight: 20 Lbs.)



**CURVED ARM** (EPA: 1.00/Weight: 20 Lbs.)



## ORDERING INFORMATION

### SERIES

**VF2** Voltaire Medium Architectural Flood Light

### LED PACKAGE

Note: See page 3 for fixture performance data.

EXAMPLE: L70/750			
LUMEN PACKAGE	NOMINAL LUMENS	MINIMUM CRI & CCT	WATTAGE
L57	5,700	730 = 70 CRI, 3000K	53
L70	7,000	740 = 70 CRI, 4000K	69
L88	8,800	750 = 70 CRI, 5000K	97

### DISTRIBUTION

See page 2 for distribution details.

NS	Narrow spot (3H x 3V)
MF	Medium flood (5H x 5V)
WF	Wide flood (6H x 6V)
HS	Horizontal spot (7H x 5V)
VF	Vertical flood (5H x 5V)
HF	Horizontal flood (7H x 5V)

### MOUNTING

SR	Straight arm
CU	Curved arm (vertical surface mount, downlight orientation only, includes die-cast adapter and mounting plate)

### FINISH OPTIONS

For custom color, visit the VF2 at [hew.com](http://hew.com).<sup>1</sup>

BLK	Black (RAL #9004)
DBZ	Dark bronze
DBR	Medium bronze
GRAY	Standard gray
SLV	Satin aluminum (RAL #9006)
WHT	White (RAL #9003)

### OPTIONS (Factory-installed)

See page 2 option details.

PC	Factory-installed button-style photocell (120V, 208V, 240V, or 277V only; must specify voltage)
WG	Wireguard, 11-gauge tempered steel with chrome powder-coat finish, factory-installed <sup>2</sup>
FVS	Flush vandal shield, 3/16" clear polycarbonate, factory-installed <sup>2</sup>

### ACCESSORIES (Ordered separately, field-installed)

Accessories ordered separately, see page 4 for details.

Mounting accessories available (straight arm only), ordered separately, see page 5 for details.

VF2CS	Cutoff shield, field-installed <sup>2</sup>
VF2FS	Full cutoff shield, field-installed <sup>2</sup>

### DRIVER

DIM	10% dimming driver prewired for 0-10V low voltage applications
-----	--

### VOLTAGE

120	120V
208	208V
240	240V
277	277V
UNV	120-277V
347	347V
480	480V

## FEATURES

### GENERAL

- Engineered with the highest quality materials to ensure reliability, performance, and quality.
- Low-profile, contoured architectural design blends with both contemporary or traditional architecture.
- Architectural appearance is preserved via concealed heatsink design.
- 60% energy savings over HID systems.
- Six standard finish options.
- This fixture is proudly made in the USA.

### CONSTRUCTION

- Sealed, die-cast housing with stainless steel fasteners is rugged and durable.
- Sturdy, integral knuckle design features locking teeth for reliable performance.
- IP66 Rated
- ANSI 3G (Straight arm fixture only.)

### PERFORMANCE & LIFETIME

- Rated >50,000 hours at 70% lumen maintenance (L70).
- Delivers 5,700-8,800 nominal lumens
- Up to 108 lumens per watt
- ANSI 3000K, 4000K and 5000K CCT, minimum 70 CRI

### THERMAL

- Integral die-cast aluminum heatsink provides optimal passive thermal management.
- Rated for -30°C to 40°C ambient operating temperature.

### OPTICAL

- Acrylic precision optics produce industry-standard floodlight distributions to provide precise optical control.
- Optional half and full cutoff shields minimize glare and unwanted spill light.

### ELECTRICAL

- 0-10V dimming standard.
- 10kA/10kV surge protection standard.
- Single-board LED system design minimizes electrical connection points for increased reliability.

<sup>1</sup> For custom colors other than RAL, manufacturers' code plus two swatches (minimum 1" square) required.

<sup>2</sup> Fixture can accommodate only one face-mounted option/accessory.



## LED

## SPECIFICATIONS

**Housing** – Die-cast aluminum enclosure, sealed to protect electrical components.

**Thermal Management** – Integral die-cast aluminum heatsink provides passive thermal management. Rated -30°C to 40°C ambient operating temperature.

**Optical System** – Precision, injection-molded, refractive acrylic lensing produces standard NEMA floodlight distributions. Clear tempered glass lens.

**LED Assembly** – Circuit board design incorporates TVS (transient-voltage-suppression) diodes to protect against ESD events. ANSI 3000K, 4000K, and 5000K CCT, minimum 70 CRI LEDs.

**LED Driver** – Class 2 constant-current driver, 0-10V dimming.

**Electrical** – 120-277, 347, and 480 VAC input range; 50-60Hz; power factor > .90; THD < 20% at full load. FCC Class A compliant. 10kA/10kV surge protection standard.

**Finish** – Super durable polyester powder coat bonded to phosphate-free, multi-stage pretreated metal, meets and exceeds AAMA 2604 specifications for outdoor durability. Available in six standard colors. Custom colors available.

**Mounting** – Straight arm slip-fits  $\varnothing 2"$  ( $\varnothing 2\text{-}3/8"$  O.D.) tenon. Curved arm mounts to vertical surface or pole, downlight orientation only using cast adapter and mounting plate provided. Must be anchored to adequate structure that can safely support fixture weight.

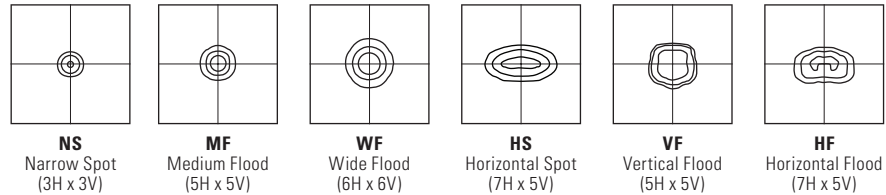
**Labels** – cCSAus listed to STD22.2 No 250.0 certified as luminaire suitable for wet locations.

**Certifications & Qualifications** –

- L70 > 50,000 hours per IES TM-21
- Tested to IES LM-79-08 standards
- Lighting Facts listed.
- DLC qualified products listed at [www.designlights.org](http://www.designlights.org).
- IDA Dark-Sky approved (horizontal mount only with LEDs facing ground).
- IP66 rated.
- Meets the American National Standard for Roadway and Area Lighting Equipment – Luminaire Vibration (ANSI C136.31-2010). Straight arm fixture only.
- RoHS compliant.

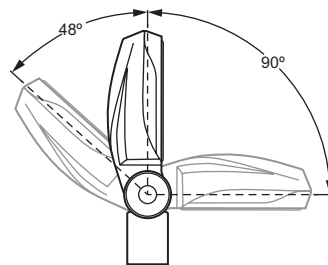
**Warranty** – 5-year limited warranty, see [hew.com/warranty](http://hew.com/warranty).

## DISTRIBUTION DETAILS

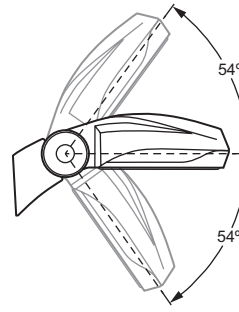


## FIXTURE DETAILS

**FIXTURE ADJUSTMENT DETAIL**  
Easily adjusts with locking teeth in 6° increments.



Straight Arm (SR)

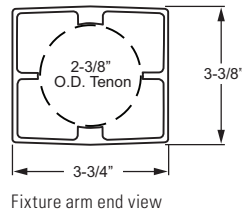


Curved Arm (CU)

## MOUNTING DETAILS

## STRAIGHT ARM (SR) MOUNTING

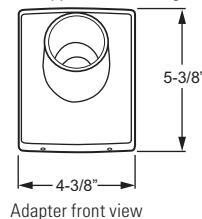
- Mounts horizontally or vertically to  $\varnothing 2"$  ( $\varnothing 2\text{-}3/8"$  O.D.) tenon.
- Up or down light applications.
- 360° rotation on mounting tenon.
- Additional mounting accessories available, see page 4 for details.



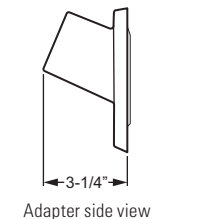
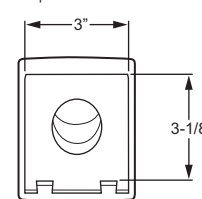
Fixture arm end view

## CURVED ARM (CU) MOUNTING

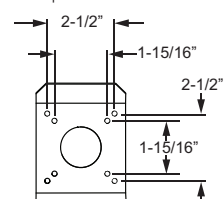
- Mounts to vertical surface or pole, downlight orientation only, using cast adapter and mounting plate provided.
- Must be anchored to adequate structure that can safely support fixture weight.



Adapter front view



Adapter side view



Mounting plate

## OPTIONS (Factory-installed)



**FVS<sup>1</sup>**  
Flush vandal shield, 3/16" clear polycarbonate, factory-installed<sup>1</sup>



**WG<sup>1</sup>**  
Wireguard, 11-gauge tempered steel with chrome powder-coat finish, factory-installed<sup>1</sup>



**PC**  
Factory-installed button-style photocell (120V, 208V, 240V, or 277V only; must specify voltage)

<sup>1</sup> Fixture can accommodate only one face-mounted option/accessory.



DLC qualified products listed at [www.designlights.org](http://www.designlights.org).

The U.S. Department of Energy's Lighting Facts® Program has verified product performance based on industry-standardized testing. For details, see H.E. Williams VF2 series at [www.lightingfacts.com](http://www.lightingfacts.com).



H.E. WILLIAMS, INC.

### FIXTURE PERFORMANCE DATA

LUMEN PACKAGE	AVERAGE SYSTEM WATTAGE <sup>1</sup>	CURRENT (MA)	DISTRIBUTION	EFFICACY (LM/W) <sup>2 3</sup>	FLUX (LM) <sup>1,2</sup>	NEMA CLASSIFICATION	
						HORIZONTAL	VERTICAL
L57	53	530	NS	97	5109	3	3
			MF	97	5116	6	6
			WF	108	5673	6	6
			HS	98	5186	7	5
			VF	103	5404	5	5
			HF	102	5336	7	6
L70	69	700	NS	91	6292	3	3
			MF	92	6300	6	6
			WF	103	6986	6	6
			HS	93	6387	7	5
			VF	98	6655	5	6
			HF	96	6572	7	5
L88	97	950	NS	82	7923	3	3
			MF	82	7934	6	6
			WF	92	8797	6	6
			HS	83	8042	7	5
			VF	88	8381	5	5
			HF	86	8276	7	6

<sup>1</sup> Efficacy and flux shown are for 5000K CCT. Flux multipliers: 0.95 for 4000K, 0.86 for 3000K

<sup>2</sup> Photometrics tested in accordance with IESNA LM-79. Results shown are at 25°C ambient temperature.

<sup>3</sup> Restrictions may apply, see DLC qualified products list at [www.designlights.org](http://www.designlights.org)

### LUMEN MAINTENANCE

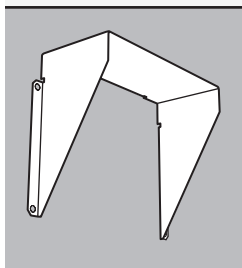
AMBIENT TEMP.	LUMEN PACKAGE	CCT	REPORTED L70 HOURS (TM-21)
25°C	L57	ALL	>60,000
	L70		
	L88	3000K	>51,000
		4000K & 5000K	>60,000
40°C	L57	ALL	>60,000
	L70		
	L88	3000K	>46,000
		4000K & 5000K	>60,000

■ Predicted lumen maintenance calculated from LED manufacturer IES LM-80 data and in-situ temperature measurement.

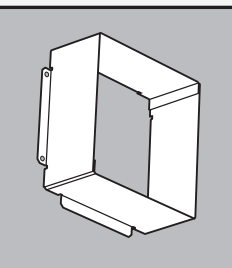
■ Reported L70 hours in accordance with IES TM-21.

SEE BACK FOR ACCESSORIES

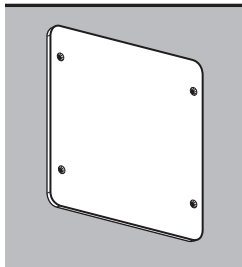


**ACCESSORIES** (Ordered separately, field-installed)**NOTE:** Fixture can accommodate only one face-mounted option/accessory.**CUTOFF SHIELD**

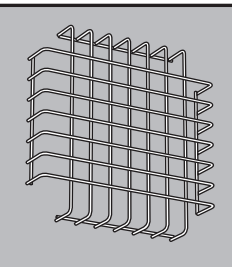
**VF2CS**— Cutoff shield, 1/16" thick aluminum, field-installed. Must specify finish. Includes (4) #6-32 screws. 9-5/8" x 7-11/16" x 3-9/16"  
EPA: 0.25/Weight: 0.42 Lbs.

**Example: VF2CS-DBZ****FULL CUTOFF SHIELD**

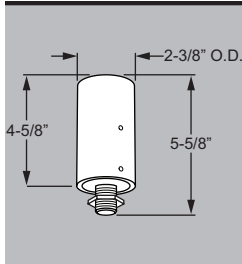
**VF2FS**— Full cutoff shield, 1/16" thick aluminum, field-installed. Must specify finish. Includes (4) #6-32 screws. 9-5/8" x 9-5/8" x 3-9/16"  
EPA: 0.42/Weight: 0.82 Lbs.

**Example: VF2FS-DBZ****VANDAL SHIELD KIT** (Field-installed)

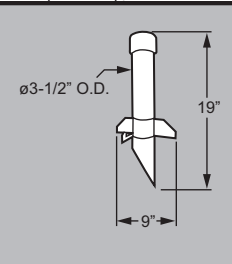
**VF2FVS** Flush vandal shield kit, 3/16" clear polycarbonate, field-installed. Includes (4) #6-32 screws and clips.  
EPA: 0.02/Weight: 0.60 Lbs.

**WIREGUARD KIT** (Field-installed)

**WG-VF2** Wireguard kit, 11-gauge tempered steel with chrome powder-coat finish, field-installed. Includes (8) #6-32 screws and clips.  
EPA: 0.18/Weight: 0.69 Lbs.

**MOUNTING ACCESSORIES – STRAIGHT ARM ONLY** (Ordered separately)**THREADED ADAPTER**

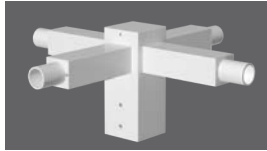
**VF2TA** 1/2" NPS stainless steel threaded nipple with hex locknut on a cast aluminum anodized  $\varnothing$ 2-3/8" O.D. adapter  
EPA: 0.00/Weight: 0.61 Lbs.

**GROUND STAKE**

**STK** Ground stake, molded black plastic with integral splice compartment and 1/2" NPS threaded entry point for fixture mounting (requires VF2TA accessory, left)

## SERIES

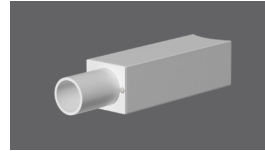
Note: Tenons cannot be mounted in down orientation. Mounting accessories are for use with straight arm (SR) fixtures only.



### TMHT Pole Top Tenon - Horizontal Fixture

Example: **VF2-TMHT-SQ-T238-S-SLV**

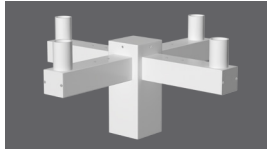
- Mounts on 2-3/8" - 3" pole top tenons
- Round or square to match pole shape
- Mounting configurations for one to four fixtures
- Center tenon option available



### DMHT Direct Mount - Horizontal Fixture

Example: **VF2-DMHT-SQ-S-SLV**

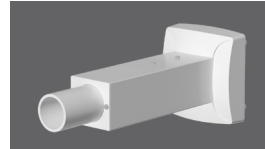
- Mounts to round or square poles
- Fixture can be mounted for up or downlight



### TMVT Pole Top Tenon - Vertical Fixture

Example: **VF2-TMVT-SQ-T238-S-SLV**

- Mounts on 2-3/8" - 3" pole top tenons
- Round or square to match pole shape
- Vertical fixture tenons
- Mounting configurations for one to four fixtures
- Center tenon option available.



### WMHT Wall Mount - Horizontal Fixture

Example: **VF2-WMHT-SLV**

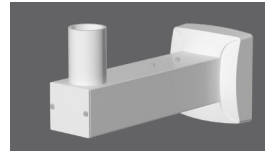
- Cast cover matches fixture aesthetics
- Fixture can be mounted for up or downlight



### HT Horizontal Pole Top Tenon

Example: **VF2-HT-SQ-T238-S-SLV**

- Mounts on 2-3/8" - 3" pole top tenons
- Round or square to match pole shape
- Horizontal fixture tenons
- Mounting configurations for one to four fixtures
- Center tenon option available.



### WMVT Wall Mount - Vertical Fixture

Example: **VF2-WMVT-SLV**

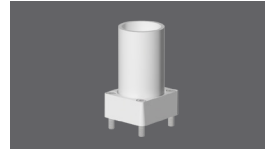
- Cast cover matches fixture aesthetics
- Fixtures can be rotated 360° around tenon



### VT Vertical Pole Top Tenon

Example: **VF2-VT-SQ-T238-SLV**

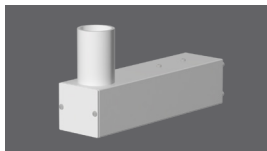
- Mounts on 2-3/8" - 3" pole top tenons
- Round or square to match pole shape
- Vertical fixture tenon



### SM Surface Mount

Example: **VF2-SM-SLV**

- Mounts to any flat surface, with tenon in upward or horizontal orientation
- Fixtures can be rotated 360° around tenon



### DMVT Direct Mount - Vertical Fixture

Example: **VF2-DMVT-SQ-S-SLV**

- Mounts to round or square poles
- Fixtures can be rotated 360° around tenon



### ST Stanchion Mount

Example: **VF2-ST-SLV**

- Profile matches VF1 and VF2 arms
- Stanchion arm base cover and fixture rotate 360° around base

## ORDERING INFORMATION

EXAMPLE

**VF2-TMVT - SQ - T238 - S - DBZ - OPTIONS**

SERIES

SHAPE

TENON SIZE

MOUNTING CONFIGURATION

FINISH OPTIONS

OPTIONS

SERIES	SIZE/SHAPE	TENON SIZE (BY OTHERS)	MOUNTING CONFIGURATION	FINISH OPTIONS	OPTIONS
<b>TENON MOUNT</b>					
VF2-TMHT VF2-TMVT VF2-HT	SQ = Square RD = Round	T238 = ø2-3/8" O.D. T278 = ø2-7/8" O.D. T3 = ø3" O.D.	S = Single D90 = Double @ 90° D180 = Double @ 180° T90 = Triple @ 90° T120 = Triple @ 120° <sup>1</sup> Q90 = Quad @ 90°	BLK = Black DBZ = Dark bronze DBR = Medium bronze GRAY = Standard gray SLV = Satin aluminum WHT = White	CT = Center tenon
VF2-VT	SQ = Square RD = Round	T238 = ø2-3/8" O.D. T278 = ø2-7/8" O.D. T3 = ø3" O.D.			
<b>DIRECT MOUNT</b>					
VF2-DMVT VF2-DMHT	SQ = Square pole 4R = 4" round pole 5R = 5" round pole 6R = 6" round pole		S = Single D90 = Double @ 90° D180 = Double @ 180° T90 = Triple @ 90° T120 = Triple @ 120° <sup>1</sup> Q90 = Quad @ 90°	BLK = Black DBZ = Dark bronze DBR = Medium bronze GRAY = Standard gray SLV = Satin aluminum WHT = White	
VF2-WMHT VF2-WMVT VF2-SM VF2-ST					

<sup>1</sup> For RD option only



## LED

## LOAD DATA

MODEL NUMBER	ARM LENGTH <sup>1</sup>	MOUNTING CONFIGURATION	EPA <sup>2</sup>	WEIGHT
VF2-SM		-	0.06	1.24
VF2-ST	14"	-	1.03	5.86
VF2-DMHT-SQ VF2-DMHT-RD	12"	S D90 D180 T90 T120 Q90	0.87	5.19
VF2-DMVT-SQ VF2-DMVT-RD	14"	S D90 D180 T90 T120 Q90	0.99	5.35
VF2-WMHT	12"	-	1.25	8.1
VF2-WMVT	14"	-	1.34	7.36
VF2-TMHT-RD	12"	S D90 D180 T90 T120 Q90	1.44 2.18 2.23 2.92 2.82 3.62	10.84 14.57 14.57 19.21 19.21 23.85
VF2-TMVT-RD	14"	S D90 D180 T90 T120 Q90	1.56 2.45 2.45 3.25 3.16 4.07	9.04 12.79 12.79 16.54 16.54 20.29
VF2-TMHT-SQ	12"	S D90 D180 T90 Q90	1.41 2.00 2.01 2.56 3.12	11.84 16.48 16.48 21.12 25.76
VF2-TMVT-SQ	14"	S D90 D180 T90 Q90	1.56 2.36 2.13 2.86 3.41	10.95 14.70 14.70 18.45 22.20
VF2-VT-RD	-	-	0.69	6.00
VF2-VT-SQ	-	-	0.83	7.75
VF2-HT-RD	-	S D90 D180 T90 T120 Q90	0.69	5.74 6.19 6.19 6.64 6.64 7.09
VF2-HT-SQ	-	S D90 D180 T90 Q90	0.83	7.65 8.10 8.10 8.55 9.0

<sup>1</sup> Maximum arm length cannot exceed 28.188" long in any configuration.

<sup>2</sup> EPA is calculated for mounting accessories only.